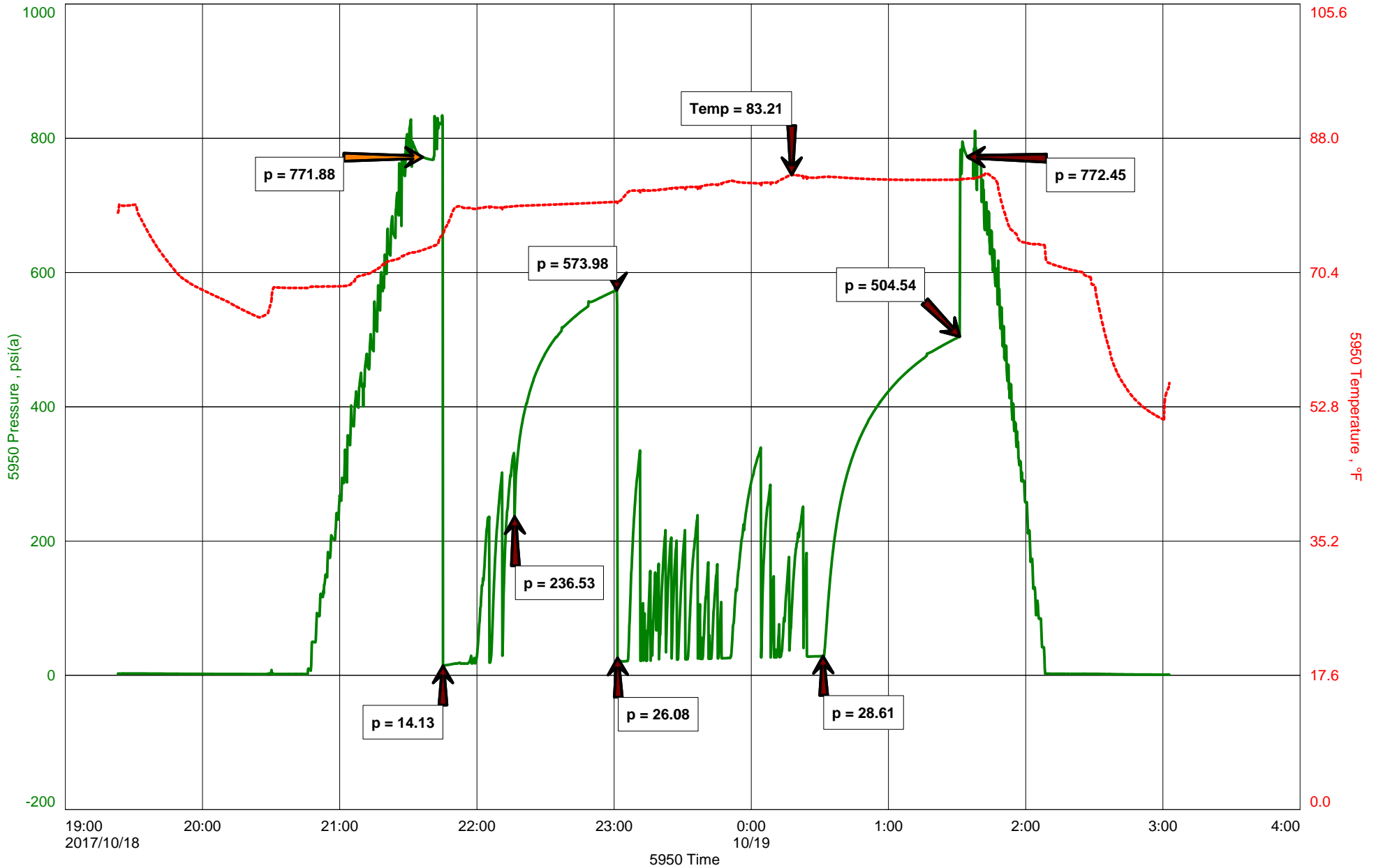
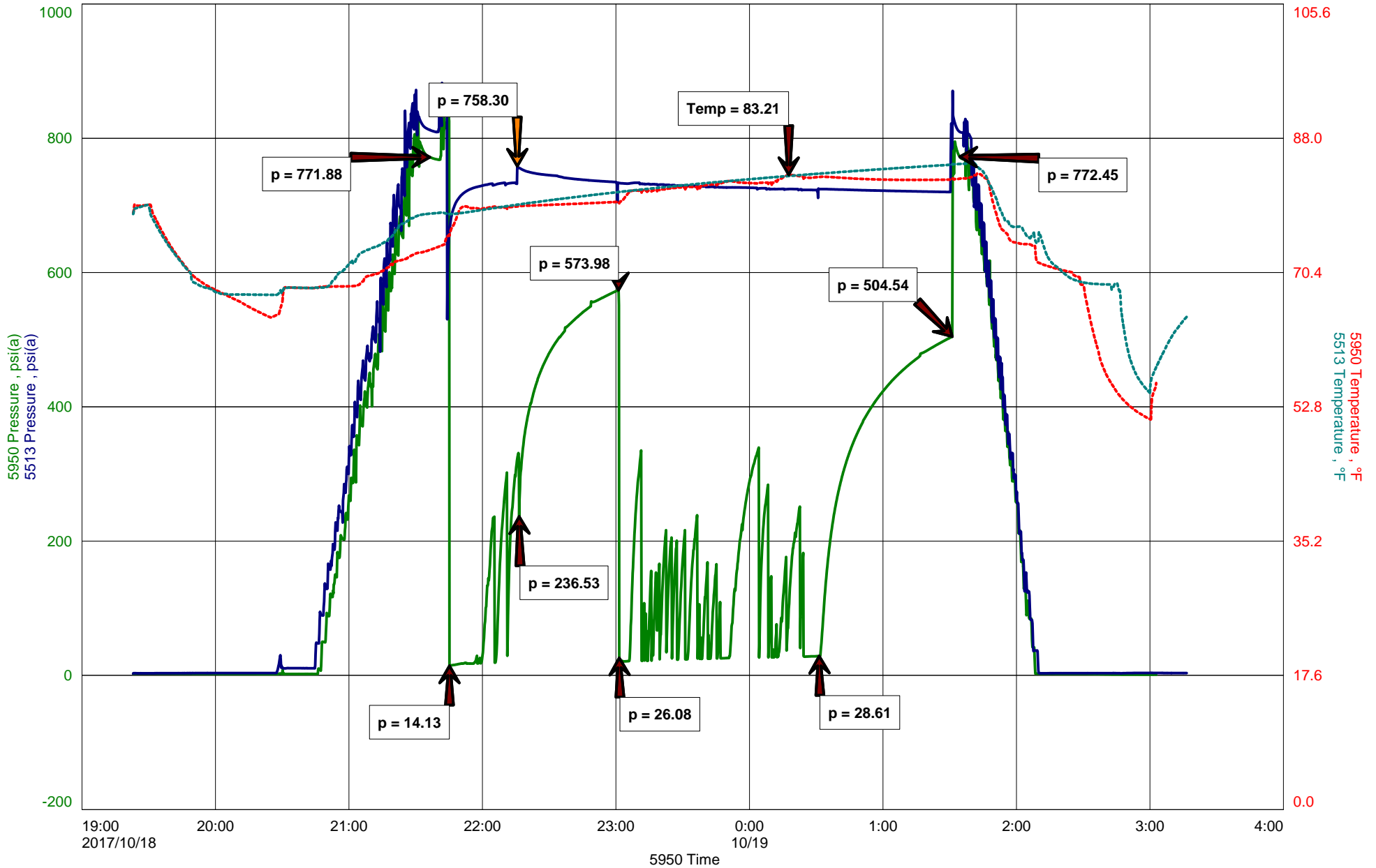


Meseke #1-29



Meseke #1-29



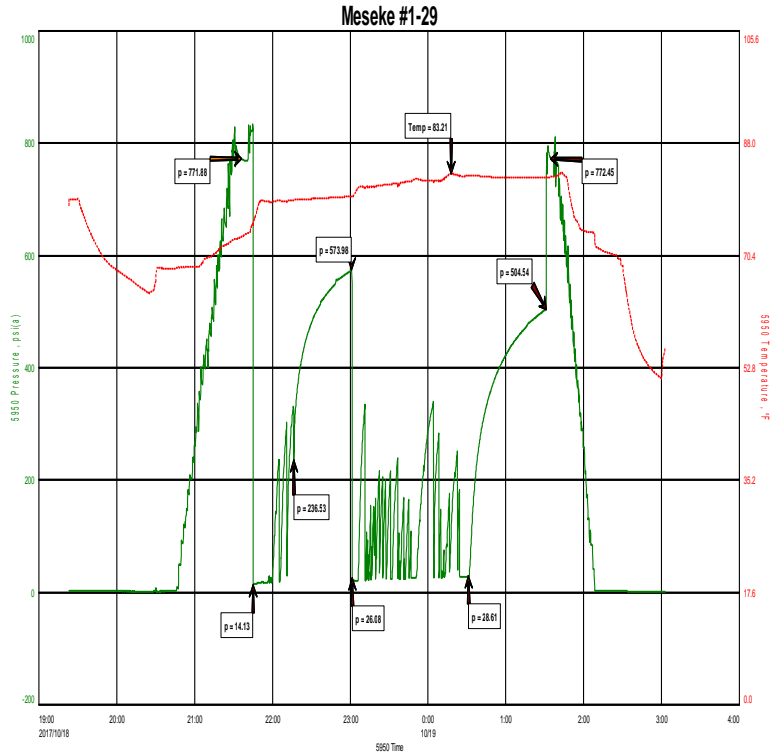


Hoisington, Kansas

Michael Carroll
620-617-0368
carroll.dtlc@gmail.com

General Information

Company Name	Blue Ridge Petroleum Corporation	Contact	Jonathan Allen
Well Name	Meseke #1-29	Well Fluid Type	01 Oil
Unique Well ID	Dst #6 Hunton 1760-1800' Rtd 1850'	Test Purpose	Initial Test
Surface Location	Sec 29-12s-9e Wabaunsee County	Start Test Date	2017/10/18
Field	Wildcat	Start Test Time	19:23:00
Well Type	Vertical	Final Test Time	03:03:00
Test Type	Drill Stem Test	Job Number	P0205
Well Operator	Blue Ridge Petroleum Corporation	Report Date	2017/10/18
Formation	Dst #6 Hunton 1760-1800' Rtd 1850'	Prepared By	Michael Carroll



TEST RECOVERY

Remarks	Recovery:	30'	Mud	100%M
	Total Fluid:	30'		
	Tool Sample:	1%Oil	99%Mud	



DIAMOND TESTING
P.O. Box 157
HOISINGTON, KANSAS 67544
(800) 542-7313
DRILL-STEM TEST TICKET
FILE: MESEKE#1-29DST#6

TIME ON: 1923 10-18
TIME OFF: 0303 10-19

Company BLUE RIDGE PETROLEUM CORPORATION Lease & Well No. MESEKE #1-29
Contractor DISCOVERY RIG 2 Charge to BLUE RIDGE PETROLEUM CORPORATION
Elevation 1335 SUR Formation HUNTON Effective Pay _____ Ft. Ticket No. P0205
Date 10-18-17 Sec. 29 Twp. _____ 12 S Range _____ 9E W County WABAUNSEE State KANSAS
Test Approved By LARRY NICHOLSON Diamond Representative Michael Carroll

Formation Test No. 6 Interval Tested from 1760 ft. to 1800 ft. Total Depth 1850 ft.
Packer Depth 1754 ft. Size 6 3/4 in. Packer depth 1800 ft. Size 6 3/4 in.
Packer Depth 1760 ft. Size 6 3/4 in. Packer depth _____ ft. Size 6 3/4 in.

Depth of Selective Zone Set _____

Top Recorder Depth (Inside) 1744 ft. Recorder Number 5950 Cap. 5000 P.S.I.
Bottom Recorder Depth (Outside) 1764 ft. Recorder Number 5588 Cap. 6000 P.S.I.
Below Straddle Recorder Depth 1833 ft. Recorder Number 5513 Cap. 5000 P.S.I.

Mud Type Chem Viscosity 50 Drill Collar Length 0 ft. I.D. 2 1/4 in.
Weight 8.3 Water Loss 40.8 cc. Weight Pipe Length 249 ft. I.D. 2 7/8 in.
Chlorides 13200 P.P.M. Drill Pipe Length 1527 ft. I.D. 3 1/2 in.
Jars: Make STERLING Serial Number 11 Test Tool Length 34 ft. Tool Size 3 1/2-IF in.
Did Well Flow? NO Reversed Out NO Anchor Length 40 ft. Size 4 1/2-FH in.
Main Hole Size 7 7/8 Tool Joint Size 4 1/2 in. 50' TAIL PIPE Surface Choke Size 1 in. Bottom Choke Size 5/8 in.

Blow: 1st Open: WSB-BUILT TO 2" IN 30 MINUTES **NOBB**
2nd Open: NO BLOW-BUILT TO 3" IN 90 MINUTES **NOBB**

Recovered 30 ft. of MUD 100%M
Recovered 30 ft. of TOTAL FLUID
Recovered _____ ft. of _____
Recovered _____ ft. of _____
Recovered _____ ft. of _____
Recovered _____ ft. of _____

Remarks: TOOL SAMPLE: 1%OIL 99%MUD
BELOW STRADDLE MAX PSI: 758 TOOL PLUGGING DUE TO LCM CONTENT
1850' RTD DUE TO 145' CEMENT

Time Set Packer(s) 9:42 P.M. A.M. P.M. Time Started Off Bottom 1:27 A.M. A.M. P.M. Maximum Temperature 83

Initial Hydrostatic Pressure..... (A) 772 P.S.I.
Initial Flow Period..... Minutes 30 (B) 14 P.S.I. to (C) 237 P.S.I.
Initial Closed In Period..... Minutes 45 (D) 574 P.S.I.
Final Flow Period..... Minutes 90 (E) 26 P.S.I. to (F) 29 P.S.I.
Final Closed In Period..... Minutes 60 (G) 505 P.S.I.
Final Hydrostatic Pressure..... (H) 772 P.S.I.

Diamond Testing shall not be liable for damages of any kind to the property or personnel of the one for whom a test is made or for any loss suffered or sustained, directly or indirectly, through the use of its equipment, or its statement or opinion concerning the result of any test. Tools lost or damaged in the hole shall be paid for at cost by the party for whom the test is made.