

W. J. B. Co.
 132541 8610
 Petroleum Geologist

116 C. Road
 Lees Ferry, AZ 87560

(725) 798-5350

FOR THE PEOPLE
 OF THE STATE OF ARIZONA

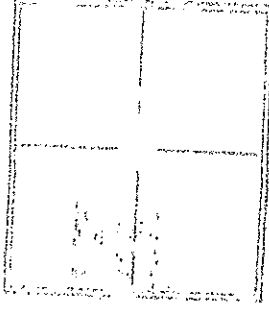
Palomino Petroleum
 Lease Unit #1

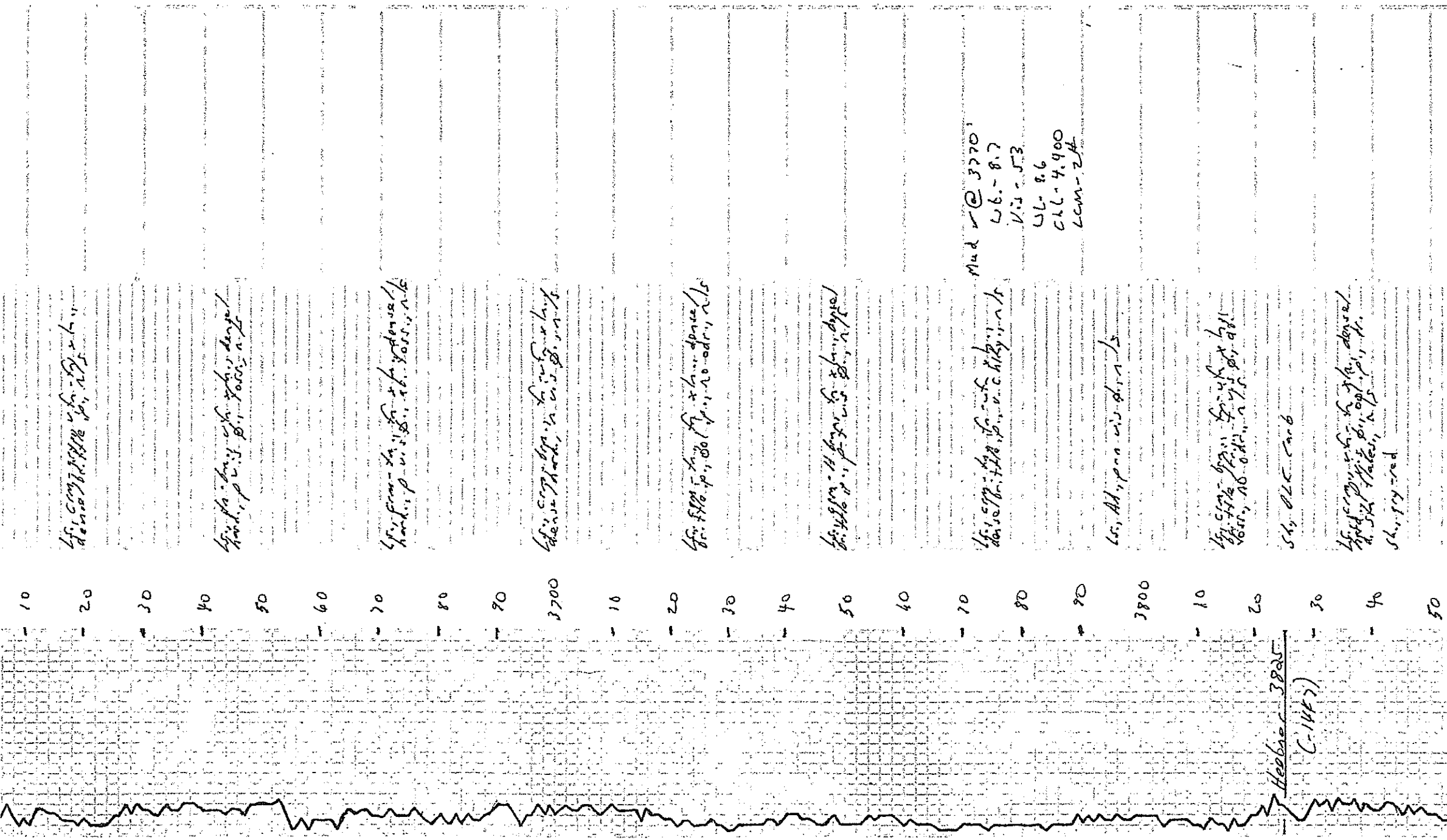
2448' EST + 2280' FEL
 30 T 215 AGE 24w
 Hobgoban SW 1/4 K5
 11/17 R.S. #17
 4660 R.S. #15
 3500 RTO
 3500 RTO
 3500 RTO
 3900 RTO
 15-083-21-992 Chemical

2378'
 2300'
 211' 8.70" @
 5 1/2"

OPTIC RECORD
 CRD, DFL,
 Micro, Sonic

Anhydrite	1601 (+777)	1520 (-1778)
Hobgoban	3823 (-1445)	3825 (-1447)
Lansing	3872 (-1494)	3874 (-1496)
BKC	4245 (-1860)	4247 (-1862)
Marathon	4264 (-1879)	4266 (-1881)
Lawnee	4345 (-1967)	4347 (-1969)
#4.5cutt	4391 (-2013)	4393 (-2015)
Cherokee SL	4421 (-2043)	4423 (-2045)
Mississippian	4493 (-2115)	4495 (-2117)





45.50M 7.7.86 4.5 - 1.5

45.50M 7.7.86 4.5 - 1.5

45.50M 7.7.86 4.5 - 1.5

45.50M 7.7.86 4.5 - 1.5

45.50M 7.7.86 4.5 - 1.5

45.50M 7.7.86 4.5 - 1.5

Mud @ 3770
 46. - 8.7
 47. - 5.3
 48. - 8.6
 49. - 4.900
 50. - 2.4

45.50M 7.7.86 4.5 - 1.5

45.50M 7.7.86 4.5 - 1.5

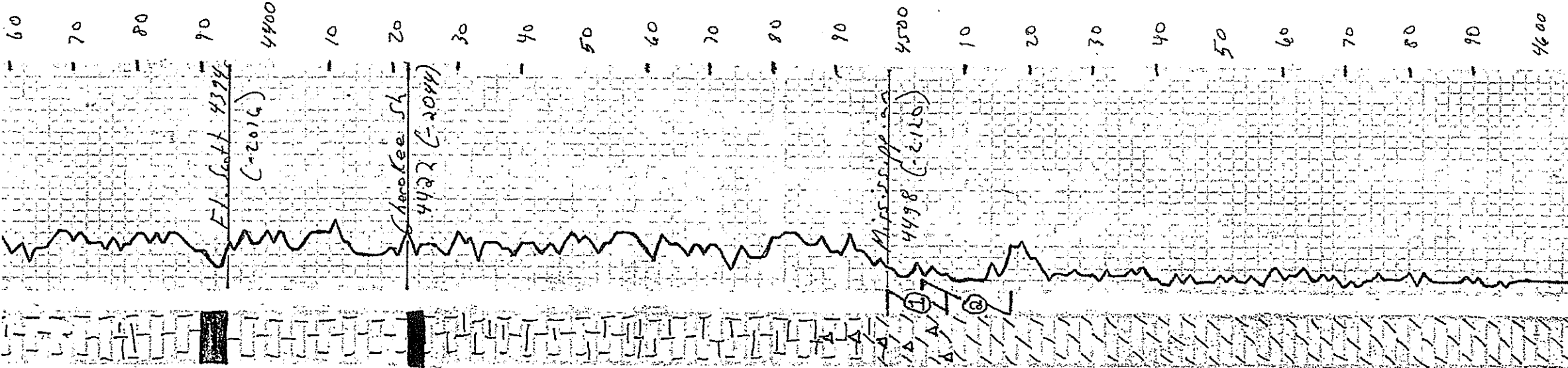
45.50M 7.7.86 4.5 - 1.5

45.50M 7.7.86 4.5 - 1.5

45.50M 7.7.86 4.5 - 1.5

45.50M 7.7.86 4.5 - 1.5

50



115
 60
 70
 80
 90
 4400
 10
 20
 30
 40
 50
 60
 70
 80
 90
 4500
 10
 20
 30
 40
 50
 60
 70
 80
 90
 4600

Sh, AA, n/s
 Sh, dark carb
 detrital sand, v. fine, 20% silt, 80% sand, 10% clay, 15% silt, 85% sand

Sh, dark carb
 detrital sand, v. fine, 20% silt, 80% sand, 10% clay, 15% silt, 85% sand
 Sh, var. color
 ls, highly calc. ls, 50%

Sh, var. color
 ls, highly calc. ls, 50%
 detrital sand, v. fine, 20% silt, 80% sand, 10% clay, 15% silt, 85% sand
 Sh, AA
 detrital sand, v. fine, 20% silt, 80% sand, 10% clay, 15% silt, 85% sand

Sh, var. color AA
 detrital sand, v. fine, 20% silt, 80% sand, 10% clay, 15% silt, 85% sand
 ls, AA v. calc. ls, 50%
 Sh, var. color AA
 detrital sand, v. fine, 20% silt, 80% sand, 10% clay, 15% silt, 85% sand

detrital sand, v. fine, 20% silt, 80% sand, 10% clay, 15% silt, 85% sand
 ls, AA v. calc. ls, 50%
 detrital sand, v. fine, 20% silt, 80% sand, 10% clay, 15% silt, 85% sand

detrital sand, v. fine, 20% silt, 80% sand, 10% clay, 15% silt, 85% sand
 ls, AA v. calc. ls, 50%
 detrital sand, v. fine, 20% silt, 80% sand, 10% clay, 15% silt, 85% sand

detrital sand, v. fine, 20% silt, 80% sand, 10% clay, 15% silt, 85% sand
 ls, AA v. calc. ls, 50%
 detrital sand, v. fine, 20% silt, 80% sand, 10% clay, 15% silt, 85% sand

DST # I 4498-4507
 Rec. 120' T.F.
 FF-3" N. Return
 FF-5" wcmo (4000, 2000, 400m)
 80' co (10000)
 HP-221#-224.#
 IFR-19#-27# FFR-4/6-65#
 ZFR-12/24 FFR-7-12/18#
 Mud ✓ @ 4507

46-24
 45-51
 44-10.0
 44-5750#
 44-1#

DST # 2 4403-4512
 Rec. 200' SIF 230' T.F.
 IF-20.0-25' IFR-Surface
 FF-20.0-26" FFR-14'
 70' ocmo (3000, 4000, 2000)
 60' wcmo (5000, 1000, 4000)
 100' 90 (1500, 8500)
 HP-223#-2203#
 IFR-19#-14# FFR-7#-100#
 IFR-12# FFR-103#

Dol. AT

Dol. calc. 4.5 x 1/2 x 1/2
hard, p. 10. 10. 2/5

20

30

40

50

60

70

80

90

4700

ATD 4660

(22182)

