

COMPANY: **STEWART PRODUCERS, INC.**  
LEASE: **#1 COUNINGHAM**  
FIELD: **WILBERT**  
LOCATION: **635 FOL & 1460 FWL**  
SEC: **19** TNSP: **18S** RNS: **24W**  
COUNTY: **NEOS** STATE: **KANSAS**  
CONTRACTOR: **L.D. DRILLING, INC.**  
SPUD: **10-3-17** COMPE: **10-11-17**  
RTD: **4424** LTD: **4420** \*  
MUD UP: **3470** TYPE MUD: **CHEMICAL**

SAMPLES SAVED FROM: **3600 TO 4424**  
DRILLING TIME KEPT FROM: **3600 TO 4424**  
SAMPLES EXAMINED FROM: **3600 TO 4424**  
GEOLOGICAL SUPERVISION FROM: **3800 TO 4424**

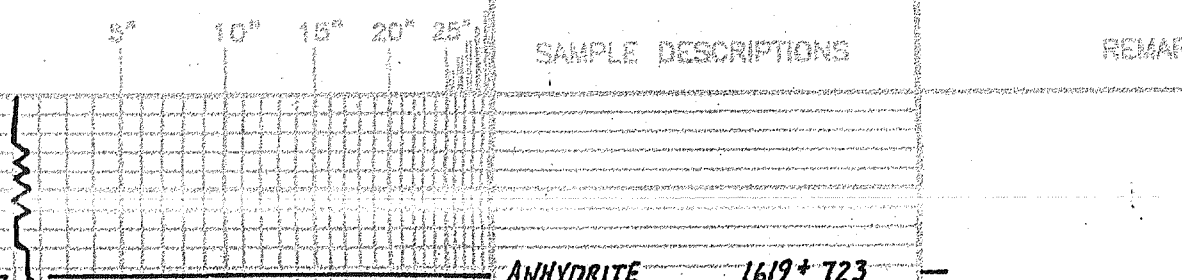
FORWARDED TO:	LOG #	SAMPLES
AMURRITTE	1615-173	1619-173
R. AUL	1653-686	1656-686
HEEBNER	3715-1373	3715-1373
LANSING	3751-1912	3751-1912
S/N/C	4092-1750	4092-1750
PAWNEE	4183-1841	4183-1841
MISSISSIPPI	4355-2013	4355-2013

REMARKS: 10-3-17 SPUD  
10-4 @ 251'  
10-5 @ 1900'  
10-6 @ 2826'  
10-7 @ 3450'  
10-8 @ 3950'  
10-9 @ 4300'  
10-10 @ 4365'  
10-11 @ 4424'

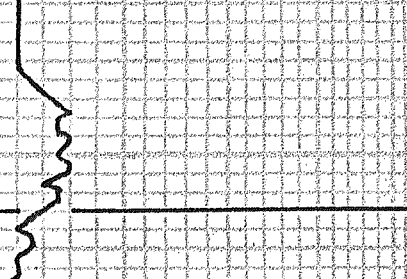
API: 15-135-25974

\*: Log measure ment seem suspect. some 5.7' up hole. Probably closer to Bg depths. *ESS*

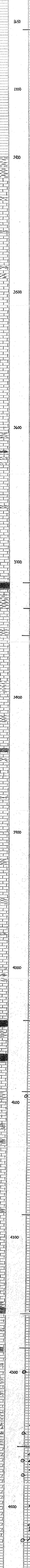
**LEGEND**



DRILLING TIME IN MINUTES PER FOOT  
Rate of Penetration Increases



DEPTH 1600



DEPTH	SAMPLE DESCRIPTIONS	REMARKS
1619-173	ANHYDRITE	
1656-686	B/ANN.	
3400		
3500		
3600	Samples are Lagged	
3715-1373	HEEBNER	
3751-1912	LANSING	
3800		
3900		
4092-1750	SAWARK	
4095	Shore Trip @ 4095	
4183-1841	PAWNEE	
4200		
4300		
4355-2013	MISSISSIPPI	
4424-2082	RTD	

