



TRILOBITE TESTING, INC.

DRILL STEM TEST REPORT

CMX Inc
 1700 N Waterfront Pkw y
 Bldg 300 B
 Wichita, KS 67206
 ATTN: Leah Kasten

29-29S-11W Pratt
Black Widow 1-29
 Job Ticket: 57841 **DST#: 1**
 Test Start: 2017.10.19 @ 16:15:15

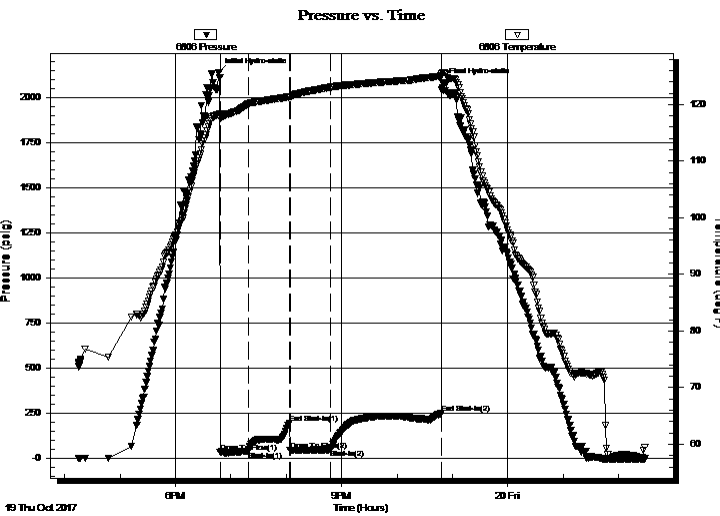
GENERAL INFORMATION:

Formation: **Mississippi**
 Deviated: No Whipstock: ft (KB)
 Time Tool Opened: 18:48:30
 Time Test Ended: 02:28:30
 Interval: **4360.00 ft (KB) To 4480.00 ft (KB) (TVD)**
 Total Depth: 4748.00 ft (KB) (TVD)
 Hole Diameter: 7.88 inches Hole Condition: Good
 Test Type: Conventional Straddle (Initial)
 Tester: Leal Cason
 Unit No: 74
 Reference Elevations: 1870.00 ft (KB)
 1861.00 ft (CF)
 KB to GR/CF: 9.00 ft

Serial #: 6806 Outside

Press@RunDepth: 49.79 psig @ 4361.00 ft (KB) Capacity: 8000.00 psig
 Start Date: 2017.10.19 End Date: 2017.10.20 Last Calib.: 2017.10.20
 Start Time: 16:15:16 End Time: 02:28:30 Time On Btm: 2017.10.19 @ 18:47:00
 Time Off Btm: 2017.10.19 @ 22:49:00

TEST COMMENT: IF: Strong Blow , BOB in 6 minutes
 IS: Blow Back Built to BOB in 20 minutes
 FF: Strong Blow , BOB in 30 seconds
 FS: Blow Back Built to BOB in 30 minutes



PRESSURE SUMMARY

Time (Min.)	Pressure (psig)	Temp (deg F)	Annotation
0	2140.99	118.24	Initial Hydro-static
2	34.88	117.49	Open To Flow (1)
32	39.58	120.06	Shut-In(1)
77	195.23	121.37	End Shut-In(1)
78	45.88	121.36	Open To Flow (2)
122	49.79	123.06	Shut-In(2)
241	249.37	125.01	End Shut-In(2)
242	2082.25	125.67	Final Hydro-static

Recovery

Length (ft)	Description	Volume (bbl)
0.00	3886 GIP	0.00
80.00	GCM 2%G 98%M	1.12

Gas Rates

Choke (inches)	Pressure (psig)	Gas Rate (Mcf/d)



**TRILOBITE
TESTING, INC.**

DRILL STEM TEST REPORT

FLUID SUMMARY

CMX Inc
1700 N Waterfront Pkw y
Bldg 300 B
Wichita, KS 67206
ATTN: Leah Kasten

29-29S-11W Pratt
Black Widow 1-29
Job Ticket: 57841 **DST#: 1**
Test Start: 2017.10.19 @ 16:15:15

Mud and Cushion Information

Mud Type: Gel Chem	Cushion Type:	Oil API:	deg API
Mud Weight: 9.00 lb/gal	Cushion Length: ft	Water Salinity:	ppm
Viscosity: 60.00 sec/qt	Cushion Volume: bbl		
Water Loss: 12.78 in ³	Gas Cushion Type:		
Resistivity: ohm.m	Gas Cushion Pressure: psig		
Salinity: 10000.00 ppm			
Filter Cake: 0.02 inches			

Recovery Information

Recovery Table

Length ft	Description	Volume bbl
0.00	3886 GIP	0.000
80.00	GCM 2%G 98%M	1.122

Total Length: 80.00 ft Total Volume: 1.122 bbl
 Num Fluid Samples: 0 Num Gas Bombs: 0 Serial #:
 Laboratory Name: Laboratory Location:
 Recovery Comments:

