



**TRILOBITE TESTING, INC.**

# DRILL STEM TEST REPORT

Vess Oil Corp.  
 1700 Waterfront Parkway  
 Building 500  
 Wichit, KS 67206  
 ATTN: Casey Coats/Roger Ma

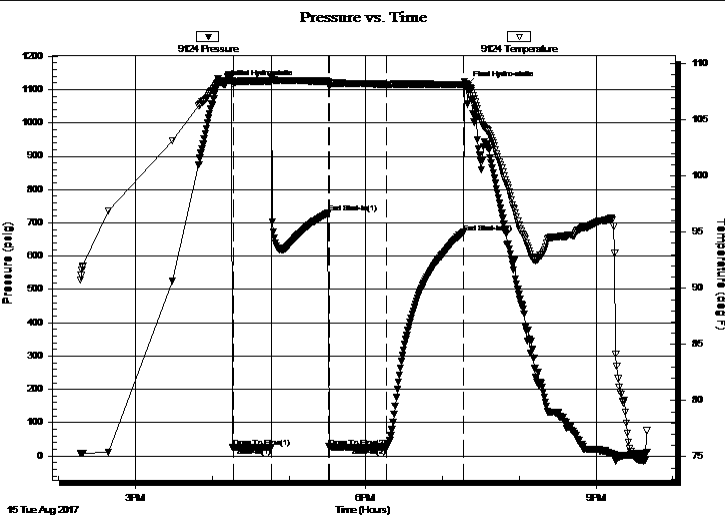
**21/25S/5E Butler, KS**  
**Chesney A #241**  
 Job Ticket: 63586 **DST#: 2**  
 Test Start: 2017.08.15 @ 14:17:00

## GENERAL INFORMATION:

Formation: **Viola**  
 Deviated: No Whipstock: ft (KB)  
 Time Tool Opened: 16:16:30  
 Time Test Ended: 21:39:30  
 Interval: **2371.00 ft (KB) To 2401.00 ft (KB) (TVD)**  
 Total Depth: 2401.00 ft (KB) (TVD)  
 Hole Diameter: 6.88 inches Hole Condition: Fair  
 Test Type: Conventional Bottom Hole (Initial)  
 Tester: Jimmy Ricketts  
 Unit No: 80  
 Reference Elevations: 1353.00 ft (KB)  
 1347.00 ft (CF)  
 KB to GR/CF: 6.00 ft

**Serial #: 9124 Inside**  
 Press@RunDepth: 26.52 psig @ 2372.00 ft (KB) Capacity: 8000.00 psig  
 Start Date: 2017.08.15 End Date: 2017.08.15 Last Calib.: 1899.12.30  
 Start Time: 14:17:05 End Time: 21:39:29 Time On Btm: 2017.08.15 @ 16:09:40  
 Time Off Btm: 2017.08.15 @ 19:18:09

TEST COMMENT: IF - Weak blow building to 1/4 inch initial flow period.  
 FF - No blow .



## PRESSURE SUMMARY

| Time (Min.) | Pressure (psig) | Temp (deg F) | Annotation           |
|-------------|-----------------|--------------|----------------------|
| 0           | 1115.45         | 108.38       | Initial Hydro-static |
| 7           | 25.86           | 108.32       | Open To Flow (1)     |
| 37          | 25.16           | 108.42       | Shut-In(1)           |
| 81          | 730.66          | 108.43       | End Shut-In(1)       |
| 82          | 26.35           | 108.28       | Open To Flow (2)     |
| 127         | 26.52           | 108.16       | Shut-In(2)           |
| 187         | 671.24          | 108.11       | End Shut-In(2)       |
| 189         | 1112.47         | 108.08       | Final Hydro-static   |

## Recovery

| Length (ft) | Description         | Volume (bbl) |
|-------------|---------------------|--------------|
| 10.00       | Drilling mud 100% M | 0.05         |
|             |                     |              |
|             |                     |              |
|             |                     |              |
|             |                     |              |

## Gas Rates

| Choke (inches) | Pressure (psig) | Gas Rate (Mcf/d) |
|----------------|-----------------|------------------|
|                |                 |                  |





**TRILOBITE  
TESTING, INC.**

# DRILL STEM TEST REPORT

**FLUID SUMMARY**

Vess Oil Corp.  
1700 Waterfront Parkway  
Building 500  
Wichit, KS 67206  
ATTN: Casey Coats/Roger Ma

**21/25S/5E Butler, KS**  
**Chesney A #241**  
Job Ticket: 63586      **DST#: 2**  
Test Start: 2017.08.15 @ 14:17:00

## Mud and Cushion Information

|                                  |                            |                 |         |
|----------------------------------|----------------------------|-----------------|---------|
| Mud Type: Gel Chem               | Cushion Type:              | Oil API:        | deg API |
| Mud Weight: 9.00 lb/gal          | Cushion Length: ft         | Water Salinity: | ppm     |
| Viscosity: 55.00 sec/qt          | Cushion Volume: bbl        |                 |         |
| Water Loss: 8.19 in <sup>3</sup> | Gas Cushion Type:          |                 |         |
| Resistivity: ohm.m               | Gas Cushion Pressure: psig |                 |         |
| Salinity: 950.00 ppm             |                            |                 |         |
| Filter Cake: inches              |                            |                 |         |

## Recovery Information

Recovery Table

| Length<br>ft | Description         | Volume<br>bbl |
|--------------|---------------------|---------------|
| 10.00        | Drilling mud 100% M | 0.049         |

Total Length: 10.00 ft      Total Volume: 0.049 bbl  
 Num Fluid Samples: 0      Num Gas Bombs: 0      Serial #:  
 Laboratory Name:      Laboratory Location:  
 Recovery Comments:

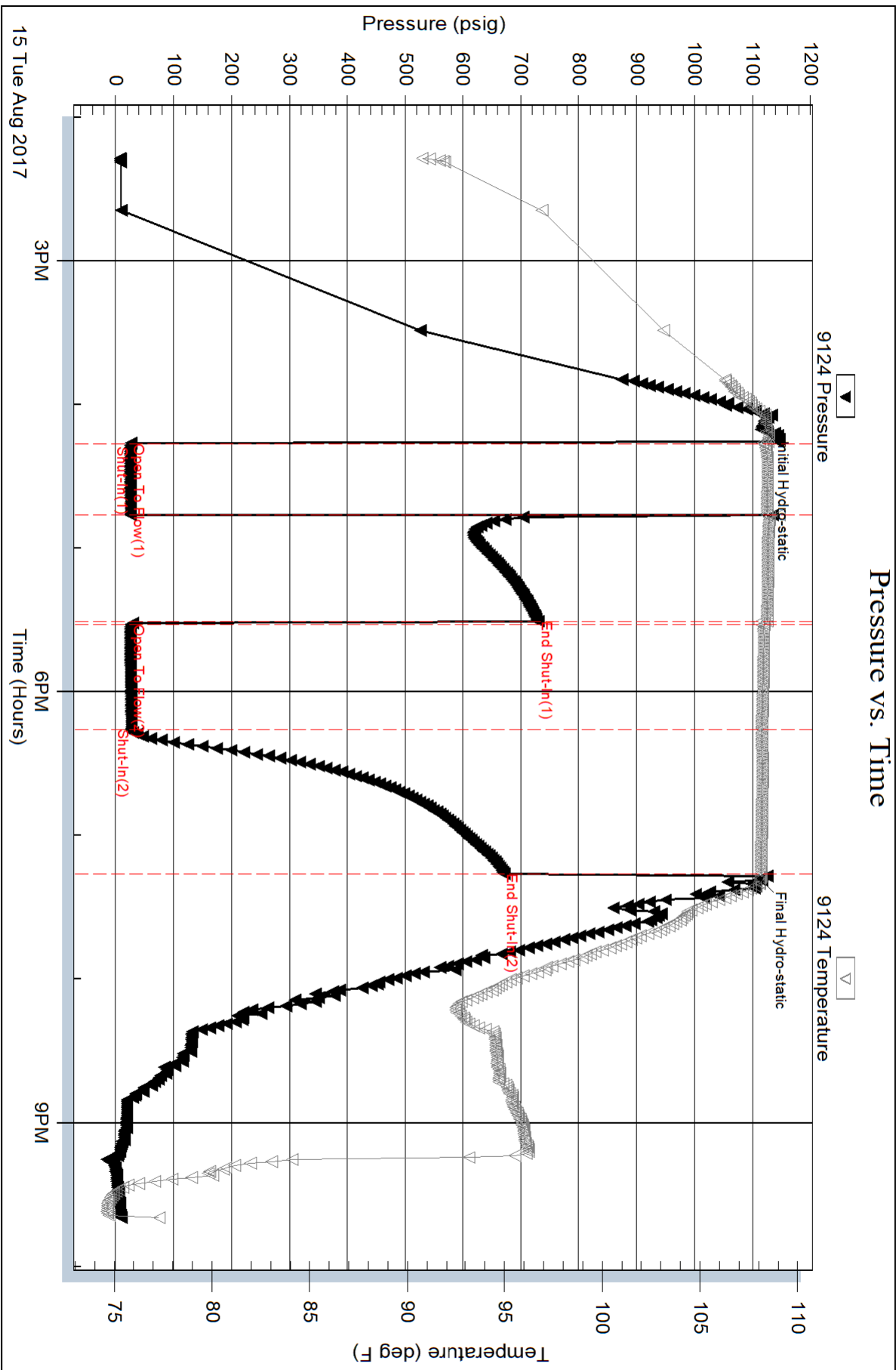
Serial #: 9124

Inside

Vess Oil Corp.

Chesney A #241

DST Test Number: 2



Serial #: 8679

Outside Vess Oil Corp.

Chesney A #241

DST Test Number: 2

