

GEOLOGIST'S REPORT DRILLING TIME AND SAMPLE LOG
COMPANY CASTLE RESOURCES INC.
LEASE STEINSHOUBER #3
FIELD HOXIE WEST
ELEVATIONS
KB 2823

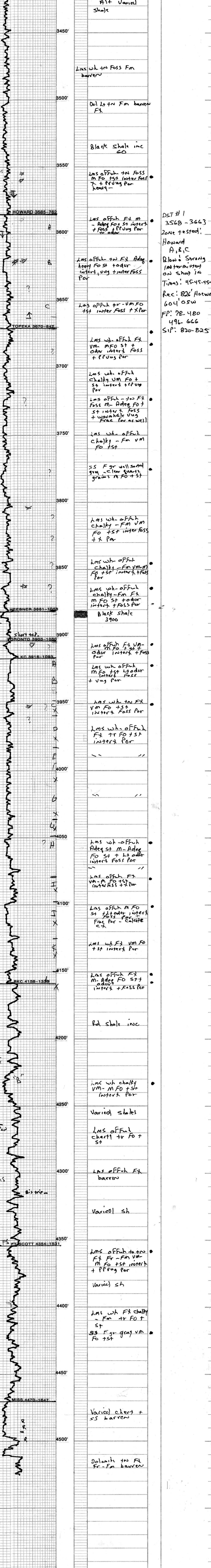
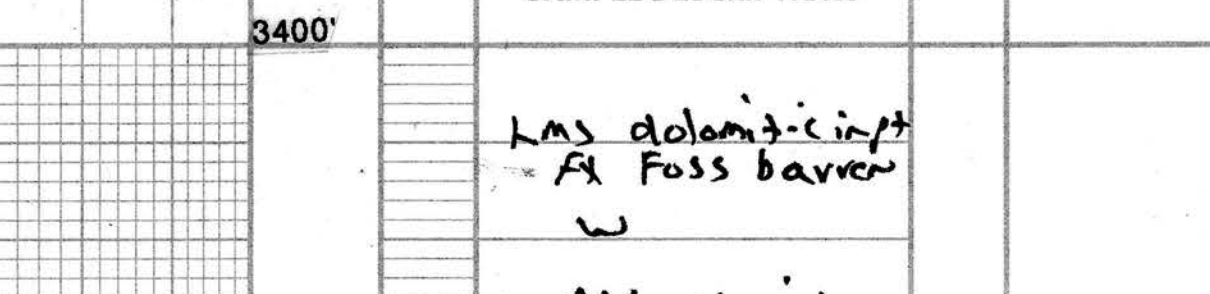
LOCATION C-SE-NE
SEC 34 TWP 8S RGE 29W
COUNTY SHELDON STATE KS
CONTRACTOR WHITE KNIGHT DRILG.
SPUD 9-23-17 COMP 10-1-17
RTD 4525 LTD 4523
MUD IP 3400 TYPE MUD CHEM.
SAMPLES SAVED FROM 3400'
DRILLING TIME KEPT FROM 3400'
SAMPLES EXAMINED FROM 3400'

GEOLOGICAL SUPERVISION FROM 3400'
GEOLOGIST ON WELL 9-27-17-10-1-17
TO TD.
TO TD.
TO TD.
TO TD.

FORMATION TOPS	LOG	SAMPLES
ANHY.	2430-64-393	2433-68-390
HOWARD	3585-757	3585-762
TOPEKA	3870-847	3870-847
TOEBNER	3891-1059	3891-1059
LKC	3916-1083	3916-1083
BKC	4158-1335	4158-1335
FT. SCOTT	4354-1531	4354-1531
MISS.	4470-1647	4470-1647
RTD	4523-1700	4525-1702

REMARKS All Parties recommended that pipe be set and this well tested. Numerous pay zones are present.
respectfully submitted

LEGEND



CONTRACTOR _____ LOCATION _____
LEASE _____ IP _____ SEC _____ TWP _____ RNG _____
ELEVATION _____ RTD _____ COUNTY _____ STATE _____