



TEMPORARY ABANDONMENT WELL APPLICATION

OPERATOR: License# _____
 Name: _____
 Address 1: _____
 Address 2: _____
 City: _____ State: _____ Zip: _____ + _____
 Contact Person: _____
 Phone: (_____) _____
 Contact Person Email: _____
 Field Contact Person: _____
 Field Contact Person Phone: (_____) _____

API No. 15- _____
 Spot Description: _____
 _____ - _____ - _____ - _____ Sec. _____ Twp. _____ S. R. _____ E W
 _____ feet from N / S Line of Section
 _____ feet from E / W Line of Section
 GPS Location: Lat: _____, Long: _____
(e.g. xx.xxxxx) (e.g. -xxx.xxxxx)
 Datum: NAD27 NAD83 WGS84
 County: _____ Elevation: _____ GL KB
 Lease Name: _____ Well #: _____
 Well Type: (check one) Oil Gas OG WSW Other: _____
 SWD Permit #: _____ ENHR Permit #: _____
 Gas Storage Permit #: _____
 Spud Date: _____ Date Shut-In: _____

	Conductor	Surface	Production	Intermediate	Liner	Tubing
Size						
Setting Depth						
Amount of Cement						
Top of Cement						
Bottom of Cement						

Casing Fluid Level from Surface: _____ How Determined? _____ Date: _____
 Casing Squeeze(s): _____ to _____ w / _____ sacks of cement, _____ to _____ w / _____ sacks of cement. Date: _____
(top) (bottom) (top) (bottom)
 Do you have a valid Oil & Gas Lease? Yes No
 Depth and Type: Junk in Hole at _____ Tools in Hole at _____ Casing Leaks: Yes No Depth of casing leak(s): _____
(depth) (depth)
 Type Completion: ALT. I ALT. II Depth of: DV Tool: _____ w / _____ sacks of cement Port Collar: _____ w / _____ sack of cement
(depth) (depth)
 Packer Type: _____ Size: _____ Inch Set at: _____ Feet
 Total Depth: _____ Plug Back Depth: _____ Plug Back Method: _____

Geological Data:

Formation Name	Formation Top	Formation Base	Completion Information
1. _____	At: _____	to _____ Feet	Perforation Interval _____ to _____ Feet or Open Hole Interval _____ to _____ Feet
2. _____	At: _____	to _____ Feet	Perforation Interval _____ to _____ Feet or Open Hole Interval _____ to _____ Feet

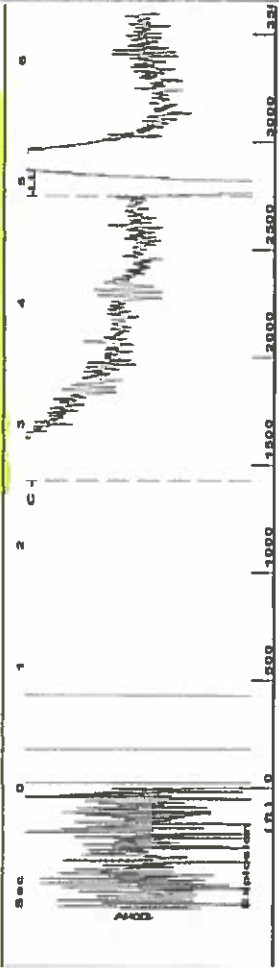
UNDER PENALTY OF PERJURY I HEREBY ATTEST THAT THE INFORMATION CONTAINED HEREIN IS TRUE AND CORRECT TO THE BEST OF MY KNOWLEDGE

Submitted Electronically

Do NOT Write in This Space - KCC USE ONLY	Date Tested: _____	Results: _____	Date Plugged: _____	Date Repaired: _____	Date Put Back in Service: _____
	Review Completed by: _____ Comments: _____				
TA Approved: <input type="checkbox"/> Yes <input type="checkbox"/> Denied Date: _____					

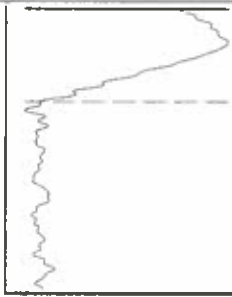
Mail to the Appropriate KCC Conservation Office:

	KCC District Office #1 - 210 E. Frontview, Suite A, Dodge City, KS 67801	Phone 620.682.7933
	KCC District Office #2 - 3450 N. Rock Road, Building 600, Suite 601, Wichita, KS 67226	Phone 316.337.7400
	KCC District Office #3 - 137 E. 21st St., Chanute, KS 66720	Phone 620.902.6450
	KCC District Office #4 - 2301 E. 13th Street, Hays, KS 67601-2651	Phone 785.261.6250



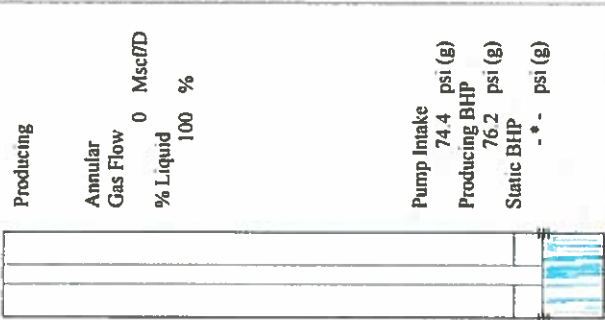
Filter Type High Pass Automatic Collar Count Yes Time 4 881 sec
 Manual Acoustic Veloc 1116.2 ft/s Manual JTS/sec 17.6056 Joints 86.6844 JTS
 Depth 2747.90 ft

1.5 to 2.5 (Sec)

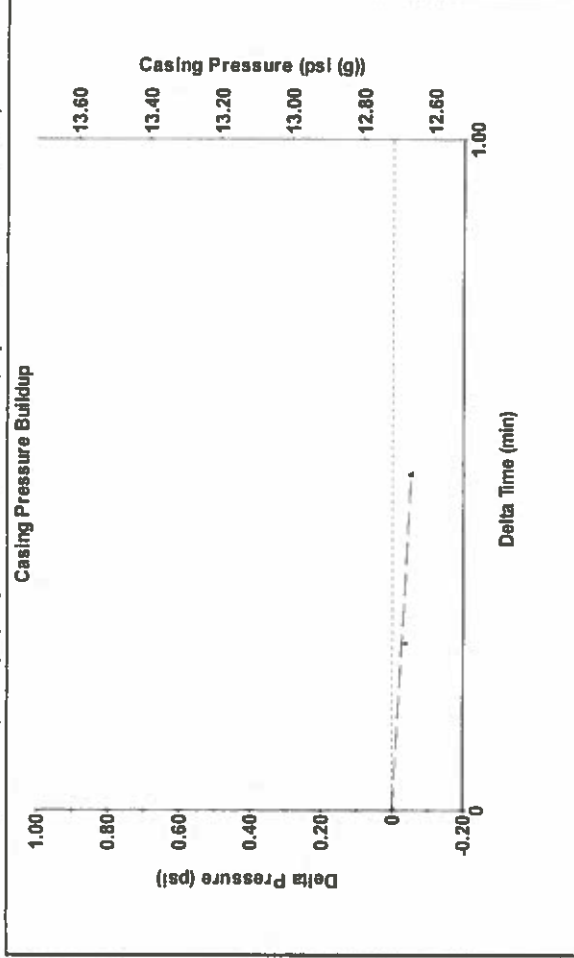


Analysis Method: Automatic

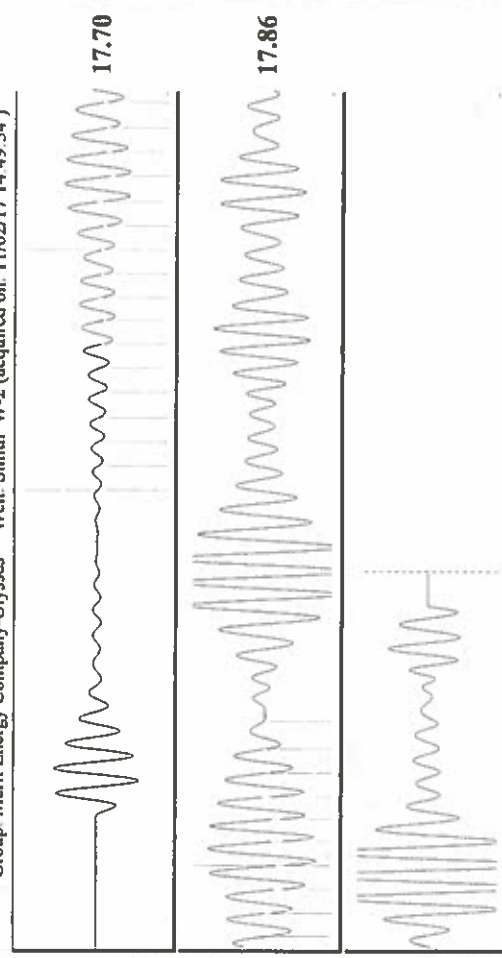
Production	Potential	Casing Pressure	12.7 psi (g)
Oil -*- BBL/D	Casing Pressure Buildup	Casing Pressure Buildup	-0.052 psi
Water -*- BBL/D	0.50 min	Gas/Liquid Interface Pressure	15.0 psi (g)
Gas -*- Mscf/D	0.0	Liquid Level Depth	2747.90 ft
IPR Method	Veget	Pump Intake Depth	2922.00 ft
PBHP/SBHP	-*-	Formation Depth	2926.00 ft
Production Efficiency	0.0		
Oil 40 deg API			
Water 1.05 Sp.Gr.H2O			
Gas 0.87 Sp.Gr.AIR			
Acoustic Velocity	1125.96 ft/s		
Formation Submergence			
Total Gaseous Liquid Column HT (TVD)	174 ft		
Equivalent Gas Free Liquid HT (TVD)	174 ft		
Acoustic Test			
Tim Frydendall-Fluid Level Technician			



Producing
 Annular Gas Flow 0 Mscf/D
 % Liquid 100 %
 Pump Intake 74.4 psi (g)
 Producing BHP 76.2 psi (g)
 Static BHP -*- psi (g)



Change in Pressure -0.05 psi PT9522 Range
 Change in Time 0.50 min 0 - 7 psi



Acoustic Velocity 1125.96 ft/s Joints counted 26
 Joints Per Second 17.7596 JTS/sec 86.6844
 Depth to liquid level 2747.9 ft 15.6056
 Automatic Collar Count Yes Filter Width 1.068
 Time to 1st Collar 2.532

Conservation Division
District Office No. 1
210 E. Frontview, Suite A
Dodge City, KS 67801



Phone: 620-682-7933
<http://kcc.ks.gov/>

Pat Apple, Chairman
Shari Feist Albrecht, Commissioner
Jay Scott Emler, Commissioner

Sam Brownback, Governor

November 07, 2017

Katherine McClurkan
Merit Energy Company, LLC
13727 Noel Raod, Suite 1200
Dallas, TX 75240

Re: Temporary Abandonment
API 15-067-20389-00-00
Smith W 2
NE/4 Sec.35-28S-36W
Grant County, Kansas

Dear Katherine McClurkan:

"Your temporary abandonment (TA) application for the well listed above has been approved. In accordance with K.A.R. 82-3-111 the TA status of this well will expire 11/07/2018.

- * If you return this well to service or plug it, please notify the District Office.
- * If you sell this well you are required to file a Transfer of Operator form, T-1.
- * If the well will remain temporarily abandoned, you must submit a new TA application, CP-111, before 11/07/2018.

You may contact me at the number above if you have questions.

Very truly yours,

Michael Maier"