



TEMPORARY ABANDONMENT WELL APPLICATION

OPERATOR: License# _____
 Name: _____
 Address 1: _____
 Address 2: _____
 City: _____ State: _____ Zip: _____ + _____
 Contact Person: _____
 Phone: (_____) _____
 Contact Person Email: _____
 Field Contact Person: _____
 Field Contact Person Phone: (_____) _____

API No. 15- _____
 Spot Description: _____
 _____ - _____ - _____ - _____ Sec. _____ Twp. _____ S. R. _____ E W
 _____ feet from N / S Line of Section
 _____ feet from E / W Line of Section
 GPS Location: Lat: _____, Long: _____
(e.g. xx.xxxxx) (e.g. -xxx.xxxxx)
 Datum: NAD27 NAD83 WGS84
 County: _____ Elevation: _____ GL KB
 Lease Name: _____ Well #: _____
 Well Type: (check one) Oil Gas OG WSW Other: _____
 SWD Permit #: _____ ENHR Permit #: _____
 Gas Storage Permit #: _____
 Spud Date: _____ Date Shut-In: _____

	Conductor	Surface	Production	Intermediate	Liner	Tubing
Size						
Setting Depth						
Amount of Cement						
Top of Cement						
Bottom of Cement						

Casing Fluid Level from Surface: _____ How Determined? _____ Date: _____
 Casing Squeeze(s): _____ to _____ w / _____ sacks of cement, _____ to _____ w / _____ sacks of cement. Date: _____
(top) (bottom) (top) (bottom)
 Do you have a valid Oil & Gas Lease? Yes No
 Depth and Type: Junk in Hole at _____ Tools in Hole at _____ Casing Leaks: Yes No Depth of casing leak(s): _____
(depth) (depth)
 Type Completion: ALT. I ALT. II Depth of: DV Tool: _____ w / _____ sacks of cement Port Collar: _____ w / _____ sack of cement
(depth) (depth)
 Packer Type: _____ Size: _____ Inch Set at: _____ Feet
 Total Depth: _____ Plug Back Depth: _____ Plug Back Method: _____

Geological Data:

Formation Name	Formation Top	Formation Base	Completion Information
1. _____	At: _____	to _____ Feet	Perforation Interval _____ to _____ Feet or Open Hole Interval _____ to _____ Feet
2. _____	At: _____	to _____ Feet	Perforation Interval _____ to _____ Feet or Open Hole Interval _____ to _____ Feet

UNDER PENALTY OF PERJURY I HEREBY ATTEST THAT THE INFORMATION CONTAINED HEREIN IS TRUE AND CORRECT TO THE BEST OF MY KNOWLEDGE

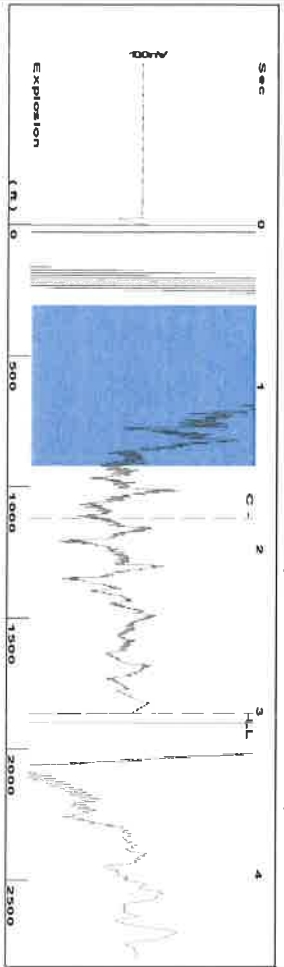
Submitted Electronically

Do NOT Write in This Space - KCC USE ONLY	Date Tested: _____	Results: _____	Date Plugged: _____	Date Repaired: _____	Date Put Back in Service: _____
	Review Completed by: _____ Comments: _____				
TA Approved: <input type="checkbox"/> Yes <input type="checkbox"/> Denied Date: _____					

Mail to the Appropriate KCC Conservation Office:

	KCC District Office #1 - 210 E. Frontview, Suite A, Dodge City, KS 67801	Phone 620.682.7933
	KCC District Office #2 - 3450 N. Rock Road, Building 600, Suite 601, Wichita, KS 67226	Phone 316.337.7400
	KCC District Office #3 - 137 E. 21st St., Chanute, KS 66720	Phone 620.902.6450
	KCC District Office #4 - 2301 E. 13th Street, Hays, KS 67601-2651	Phone 785.261.6250

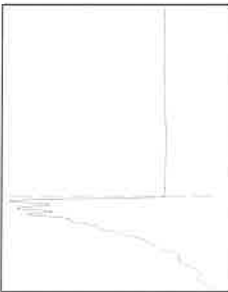
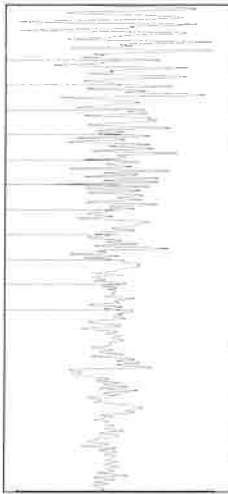
Group: CHK Well: ABERNATHY COLLINS 2 (acquired on: 04/06/17 09:32:55)



Filter Type High Pass
 Manual Acoustic Velo 1233.46 f/s
 Automatic Collar Count Yes
 Manual JTS/sec 19.4553

Time 3.008 sec
 Joints 58.7883 Jts
 Depth 1863.59 ft

0.5 to 1.5 (Sec) |



Analysis Method: Automatic

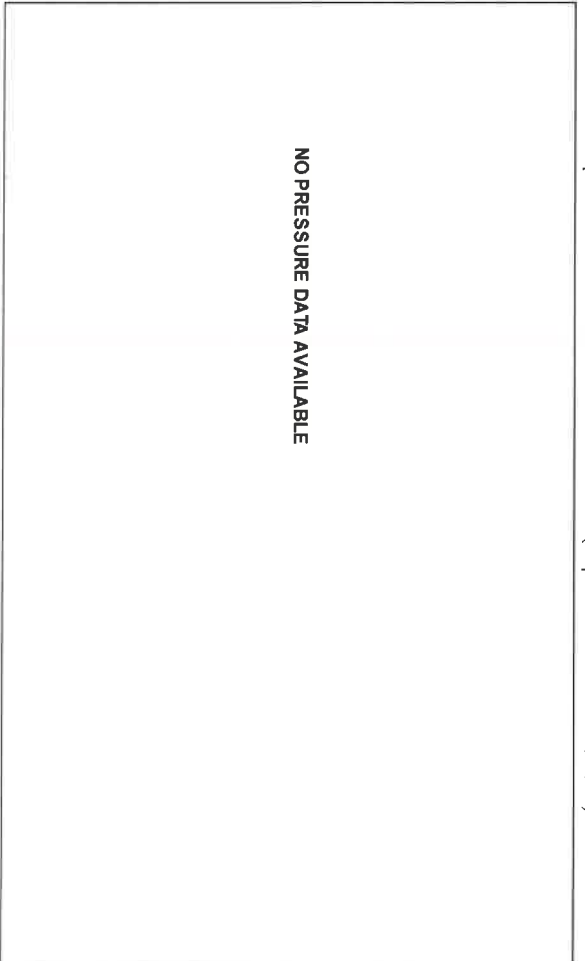
Group: CHK Well: ABERNATHY COLLINS 2 (acquired on: 04/06/17 09:32:55)

Production	Potential	Casing Pressure	Static
Current	BBL/D	35.8 psi (g)	Oil Column Height
Oil	BBL/D	-42.064 psi	MD 0 ft
Water	Mscf/D	0.75 min	Water Column Height
Gas		38.2 psi (g)	MD - * - ft
I/P Method	Vogel	Gas/Liquid Interface Pressure	
PBHP/SBHP	- * -		
Production Efficiency	0.0	Liquid Level Depth	
Oil	40 deg API	1863.59 ft	
Water	1.05 Sp Gr H2O	Pump Intake Depth	
Gas	0.74 Sp Gr AIR	- * - ft	
Acoustic Velocity	1239.09 f/s	Formation Depth	
		3947.00 ft	



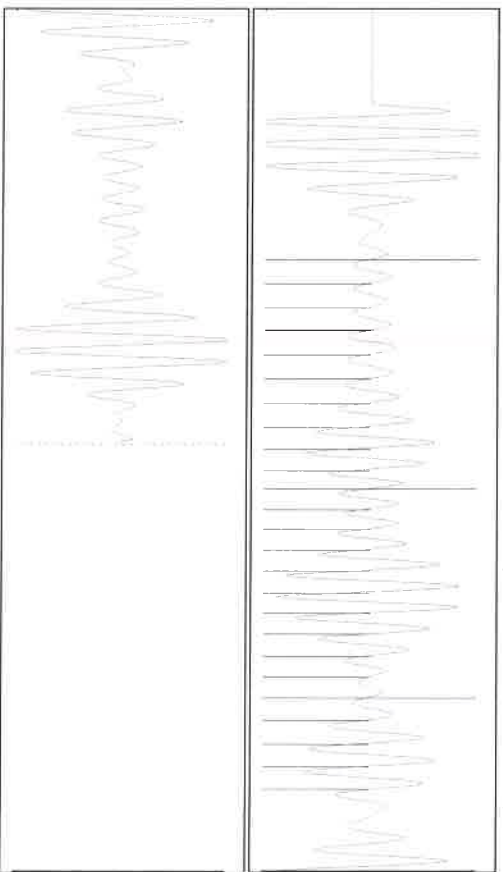
Static BHP
 985.5 psi (g)

Group: CHK Well: ABERNATHY COLLINS 2 (acquired on: 04/06/17 09:32:55)



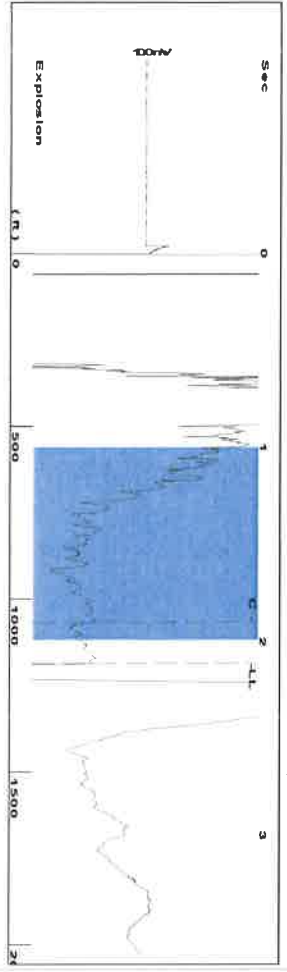
Change in Pressure 0.00 psi PT14020
 Change in Time 0.00 min Range 0 - ? psi

Group: CHK Well: ABERNATHY COLLINS 2 (acquired on: 04/06/17 09:32:55)



Acoustic Velocity	1239.09 f/s	Joints counted	24
Joints Per Second	19.544 Jts/sec	Joints to liquid level	58.7883
Depth to liquid level	1863.59 ft	Filter Width	17.4553
Automatic Collar Count	Yes	Time to 1st Collar	0.58
			21.4553
			1.808

Group: CHK Well: Abernathy-Collins 4 (acquired on: 04/06/17 09:47:40)



Filter Type High Pass Automatic Collar Count Yes
 Manual Acoustic Velo 115.21 f/s Manual JTS/sec 17.8891
 Time 2.111 sec
 Joints 38.036 Jts
 Depth 1185.58 ft

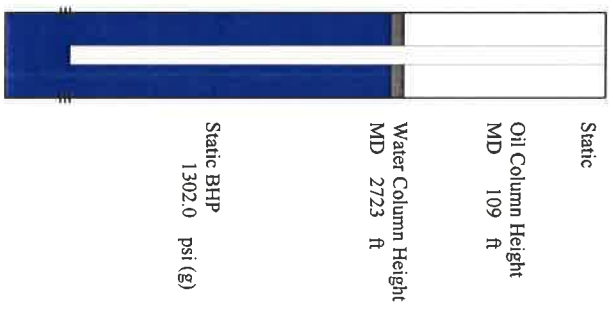
1.0 to 2.0 (Sec) |



Analysis Method: Automatic

Group: CHK Well: Abernathy-Collins 4 (acquired on: 04/06/17 09:47:40)

Production Current	Potential	Casing Pressure	Static
Oil 2	-*- BBL/D	26.5 psi (g)	Oil Column Height
Water 50	-*- BBL/D	0.007 psi	MD 109 ft
Gas 0.0	-*- Mscf/D	0.75 min	
IPR Method	Vogel	Gas/Liquid Interface Pressure	
PBHP/SBHP	-*-	27.9 psi (g)	
Production Efficiency	0.0	Liquid Level Depth	Water Column Height
Oil 40 deg API		1185.58 ft	MD 2723 ft
Water 1.05 Sp Gr H2O		Pump Intake Depth	
Gas 0.84 Sp Gr AIR		3980.00 ft	
Acoustic Velocity	1123.24 f/s	Formation Depth	
		4018.00 ft	



Acoustic Test

Static BHP
1302.0 psi (g)

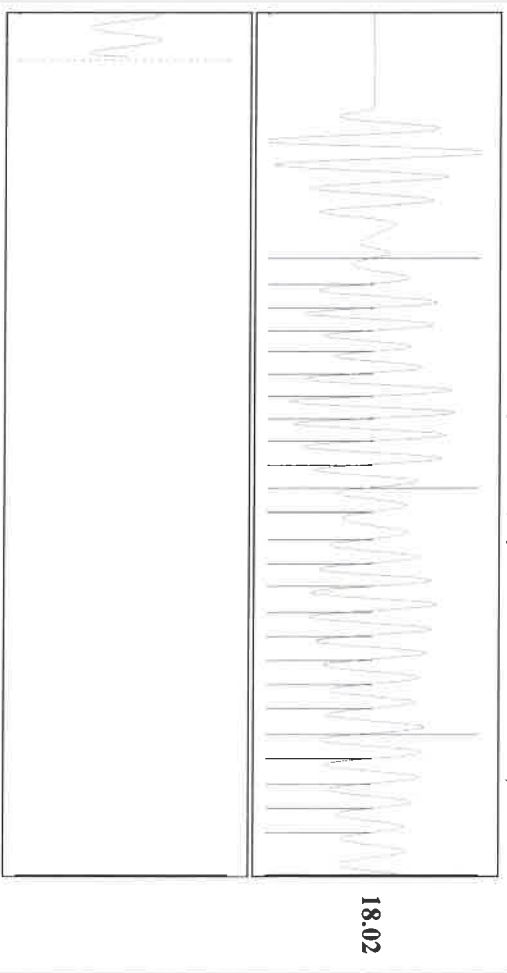
Group: CHK Well: Abernathy-Collins 4 (acquired on: 04/06/17 09:47:40)

NO PRESSURE DATA AVAILABLE

Change in Pressure 0.00 psi PT14020
 Change in Time 0.00 min Range

0 - ? psi

Group: CHK Well: Abernathy-Collins 4 (acquired on: 04/06/17 09:47:40)



Acoustic Velocity	1123.24 f/s	Joints counted	24
Joints Per Second	18.018 Jts/sec	Joints to liquid level	38.036
Depth to liquid level	1185.58 ft	Filter Width	15.8891
Automatic Collar Count	Yes	Time to 1st Collar	0.568

November 06, 2017

Brian J McCoy
Edison Operating Company LLC
8100 E. 22ND ST. N., BLDG 1900
WICHITA, KS 67226

Re: Temporary Abandonment
API 15-195-21123-00-00
ABERNATHY-COLLINS 4
NW/4 Sec.10-12S-21W
Trego County, Kansas

Dear Brian J McCoy:

"Your temporary abandonment (TA) application for the well listed above has been approved. In accordance with K.A.R. 82-3-111 the TA status of this well will expire 11/06/2018.

- * If you return this well to service or plug it, please notify the District Office.
- * If you sell this well you are required to file a Transfer of Operator form, T-1.
- * If the well will remain temporarily abandoned, you must submit a new TA application, CP-111, before 11/06/2018.

You may contact me at the number above if you have questions.

Very truly yours,

RICHARD WILLIAMS "