



# TEMPORARY ABANDONMENT WELL APPLICATION

OPERATOR: License# \_\_\_\_\_  
 Name: \_\_\_\_\_  
 Address 1: \_\_\_\_\_  
 Address 2: \_\_\_\_\_  
 City: \_\_\_\_\_ State: \_\_\_\_\_ Zip: \_\_\_\_\_ + \_\_\_\_\_  
 Contact Person: \_\_\_\_\_  
 Phone: ( \_\_\_\_\_ ) \_\_\_\_\_  
 Contact Person Email: \_\_\_\_\_  
 Field Contact Person: \_\_\_\_\_  
 Field Contact Person Phone: ( \_\_\_\_\_ ) \_\_\_\_\_

API No. 15- \_\_\_\_\_  
 Spot Description: \_\_\_\_\_  
 \_\_\_\_\_ - \_\_\_\_\_ - \_\_\_\_\_ - \_\_\_\_\_ Sec. \_\_\_\_\_ Twp. \_\_\_\_\_ S. R. \_\_\_\_\_  E  W  
 \_\_\_\_\_ feet from  N /  S Line of Section  
 \_\_\_\_\_ feet from  E /  W Line of Section  
 GPS Location: Lat: \_\_\_\_\_, Long: \_\_\_\_\_  
(e.g. xx.xxxxx) (e.g. -xxx.xxxxx)  
 Datum:  NAD27  NAD83  WGS84  
 County: \_\_\_\_\_ Elevation: \_\_\_\_\_  GL  KB  
 Lease Name: \_\_\_\_\_ Well #: \_\_\_\_\_  
 Well Type: (check one)  Oil  Gas  OG  WSW  Other: \_\_\_\_\_  
 SWD Permit #: \_\_\_\_\_  ENHR Permit #: \_\_\_\_\_  
 Gas Storage Permit #: \_\_\_\_\_  
 Spud Date: \_\_\_\_\_ Date Shut-In: \_\_\_\_\_

	Conductor	Surface	Production	Intermediate	Liner	Tubing
Size						
Setting Depth						
Amount of Cement						
Top of Cement						
Bottom of Cement						

Casing Fluid Level from Surface: \_\_\_\_\_ How Determined? \_\_\_\_\_ Date: \_\_\_\_\_

Casing Squeeze(s): \_\_\_\_\_ to \_\_\_\_\_ w / \_\_\_\_\_ sacks of cement, \_\_\_\_\_ to \_\_\_\_\_ w / \_\_\_\_\_ sacks of cement. Date: \_\_\_\_\_  
(top) (bottom) (top) (bottom)

Do you have a valid Oil & Gas Lease?  Yes  No

Depth and Type:  Junk in Hole at \_\_\_\_\_  Tools in Hole at \_\_\_\_\_ Casing Leaks:  Yes  No Depth of casing leak(s): \_\_\_\_\_  
(depth) (depth)

Type Completion:  ALT. I  ALT. II Depth of:  DV Tool: \_\_\_\_\_ w / \_\_\_\_\_ sacks of cement  Port Collar: \_\_\_\_\_ w / \_\_\_\_\_ sack of cement  
(depth) (depth)

Packer Type: \_\_\_\_\_ Size: \_\_\_\_\_ Inch Set at: \_\_\_\_\_ Feet

Total Depth: \_\_\_\_\_ Plug Back Depth: \_\_\_\_\_ Plug Back Method: \_\_\_\_\_

**Geological Data:**

Formation Name	Formation Top	Formation Base	Completion Information
1. _____	At: _____	to _____ Feet	Perforation Interval _____ to _____ Feet or Open Hole Interval _____ to _____ Feet
2. _____	At: _____	to _____ Feet	Perforation Interval _____ to _____ Feet or Open Hole Interval _____ to _____ Feet

~~UNDER PENALTY OF PERJURY I HEREBY ATTEST THAT THE INFORMATION CONTAINED HEREIN IS TRUE AND CORRECT TO THE BEST OF MY KNOWLEDGE~~

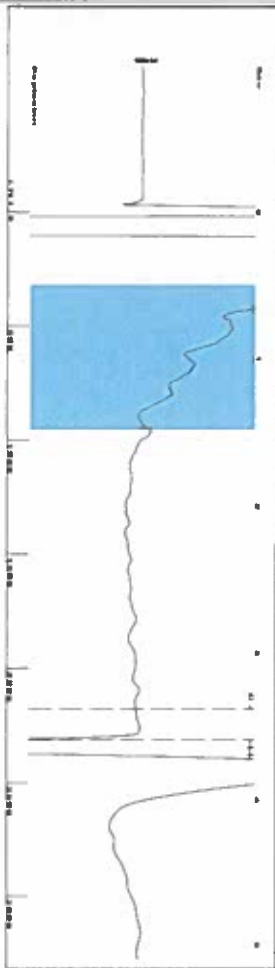
Submitted Electronically

<b>Do NOT Write in This Space - KCC USE ONLY</b>	Date Tested: _____	Results: _____	Date Plugged: _____	Date Repaired: _____	Date Put Back in Service: _____
	Review Completed by: _____ Comments: _____				
TA Approved: <input type="checkbox"/> Yes <input type="checkbox"/> Denied Date: _____					

**Mail to the Appropriate KCC Conservation Office:**

	KCC District Office #1 - 210 E. Frontview, Suite A, Dodge City, KS 67801	Phone 620.682.7933
	KCC District Office #2 - 3450 N. Rock Road, Building 600, Suite 601, Wichita, KS 67226	Phone 316.337.7400
	KCC District Office #3 - 137 E. 21st St., Chanute, KS 66720	Phone 620.902.6450
	KCC District Office #4 - 2301 E. 13th Street, Hays, KS 67601-2651	Phone 785.261.6250

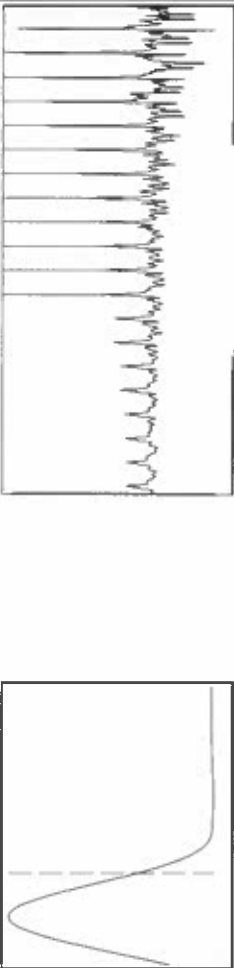
Group: SUBLETTE Well: Baughman C-3 (acquired on: 11/03/17 14:30:49)



Filter Type High Pass Automatic Collar Count Yes  
 Manual Acoustic Vel 1278.23 Manual JTS/sec 20.1613

Time 3.597 sec  
 Joints 72.9122 J/s  
 Depth 2311.32 ft

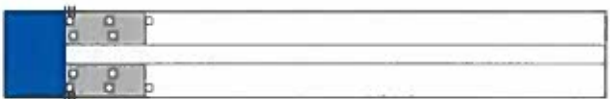
0.5 to 1.5 (Sec) |



Analysis Method: Automatic

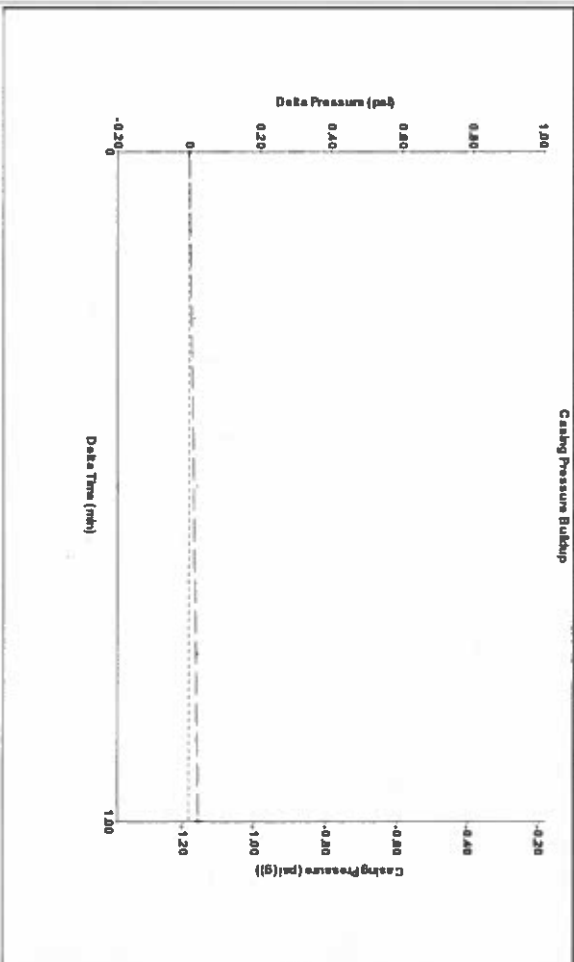
Group: SUBLETTE Well: Baughman C-3 (acquired on: 11/03/17 14:30:49)

Production	Potential	Casing Pressure	Producing
Current	BB/LD	-1.2 psi (g)	Annular
Oil	BB/LD	Casing Pressure Buildup	Gas Flow
Water	BB/LD	0.0 psi	% Liquid
Gas	Misc/D	1.00 min	100 %
IPR Method	Vogel	Gas/Liquid Interface Pressure	
PBHP/SBHP	0.0	-0.4 psi (g)	
Production Efficiency		Liquid Level Depth	
		2311.32 ft	
Oil 40 deg/API		Pump Intake Depth	
Water 1.05 Sp.Gr./H2O		2776.00 ft	
Gas 0.72 Sp.Gr./AIR		Formation Depth	
		2749.00 ft	
Acoustic Velocity	1285.14 ft/s		



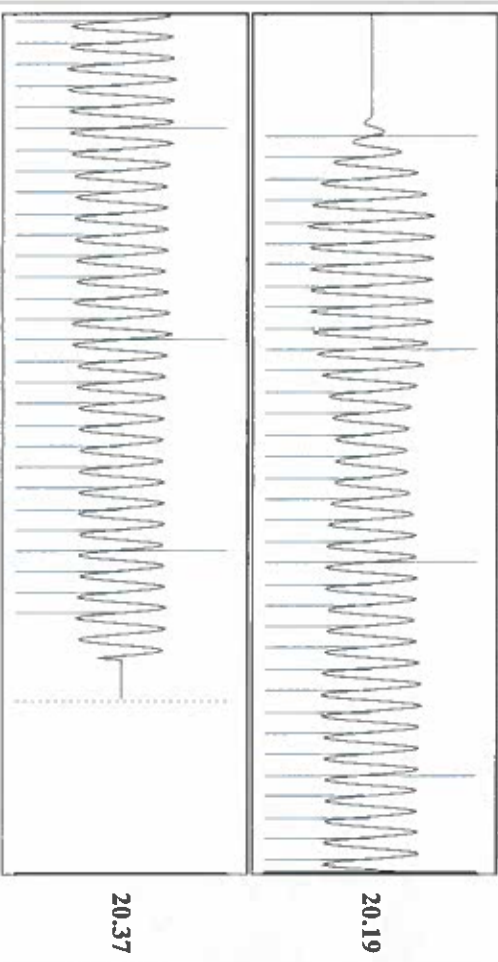
Formation Submergence  
 Total Gaseous Liquid Column HT (TVDD) 465 ft  
 Equivalent Gas Free Liquid HT (TVD) 464 ft  
 Acoustic Test  
 Pump Intake 156.5 psi (g)  
 Producing BHP 147.5 psi (g)  
 Static BHP  
 psi (g)

Group: SUBLETTE Well: Baughman C-3 (acquired on: 11/03/17 14:30:49)



Change in Pressure 0.03 psi  
 Change in Time 1.00 min  
 PT14679 Range  
 0 - ? psi

Group: SUBLETTE Well: Baughman C-3 (acquired on: 11/03/17 14:30:49)



Acoustic Velocity 1285.14 ft/s  
 Joints Per Second 20.2703 J/s/Sec  
 Depth to liquid level 2311.32 ft  
 Automatic Collar Count Yes  
 Joints counted 63  
 Joints to liquid level 72.9122  
 Filter Width 18.1613  
 Time to 1st Collar 0.284  
 22.1613  
 3.392

November 07, 2017

Katherine McClurkan  
Merit Energy Company, LLC  
13727 Noel Road, Suite 1200  
Dallas, TX 75240

Re: Temporary Abandonment  
API 15-081-20789-00-00  
Baughman C 3  
SE/4 Sec.35-27S-34W  
Haskell County, Kansas

Dear Katherine McClurkan:

"Your temporary abandonment (TA) application for the well listed above has been approved. In accordance with K.A.R. 82-3-111 the TA status of this well will expire 11/07/2018.

- \* If you return this well to service or plug it, please notify the District Office.
- \* If you sell this well you are required to file a Transfer of Operator form, T-1.
- \* If the well will remain temporarily abandoned, you must submit a new TA application, CP-111, before 11/07/2018.

You may contact me at the number above if you have questions.

Very truly yours,

Michael Maier"