



TEMPORARY ABANDONMENT WELL APPLICATION

OPERATOR: License# _____
 Name: _____
 Address 1: _____
 Address 2: _____
 City: _____ State: _____ Zip: _____ + _____
 Contact Person: _____
 Phone: (_____) _____
 Contact Person Email: _____
 Field Contact Person: _____
 Field Contact Person Phone: (_____) _____

API No. 15- _____
 Spot Description: _____
 _____ - _____ - _____ - _____ Sec. _____ Twp. _____ S. R. _____ E W
 _____ feet from N / S Line of Section
 _____ feet from E / W Line of Section
 GPS Location: Lat: _____, Long: _____
(e.g. xx.xxxxx) (e.g. -xxx.xxxxx)
 Datum: NAD27 NAD83 WGS84
 County: _____ Elevation: _____ GL KB
 Lease Name: _____ Well #: _____
 Well Type: (check one) Oil Gas OG WSW Other: _____
 SWD Permit #: _____ ENHR Permit #: _____
 Gas Storage Permit #: _____
 Spud Date: _____ Date Shut-In: _____

| | Conductor | Surface | Production | Intermediate | Liner | Tubing |
|------------------|-----------|---------|------------|--------------|-------|--------|
| Size | | | | | | |
| Setting Depth | | | | | | |
| Amount of Cement | | | | | | |
| Top of Cement | | | | | | |
| Bottom of Cement | | | | | | |

Casing Fluid Level from Surface: _____ How Determined? _____ Date: _____

Casing Squeeze(s): _____ to _____ w / _____ sacks of cement, _____ to _____ w / _____ sacks of cement. Date: _____
(top) (bottom) (top) (bottom)

Do you have a valid Oil & Gas Lease? Yes No

Depth and Type: Junk in Hole at _____ Tools in Hole at _____ Casing Leaks: Yes No Depth of casing leak(s): _____
(depth) (depth)

Type Completion: ALT. I ALT. II Depth of: DV Tool: _____ w / _____ sacks of cement Port Collar: _____ w / _____ sack of cement
(depth) (depth)

Packer Type: _____ Size: _____ Inch Set at: _____ Feet

Total Depth: _____ Plug Back Depth: _____ Plug Back Method: _____

Geological Data:

| Formation Name | Formation Top | Formation Base | Completion Information |
|----------------|---------------|----------------|--|
| 1. _____ | At: _____ | to _____ Feet | Perforation Interval _____ to _____ Feet or Open Hole Interval _____ to _____ Feet |
| 2. _____ | At: _____ | to _____ Feet | Perforation Interval _____ to _____ Feet or Open Hole Interval _____ to _____ Feet |

UNDER PENALTY OF PERJURY I HEREBY ATTEST THAT THE INFORMATION CONTAINED HEREIN IS TRUE AND CORRECT TO THE BEST OF MY KNOWLEDGE

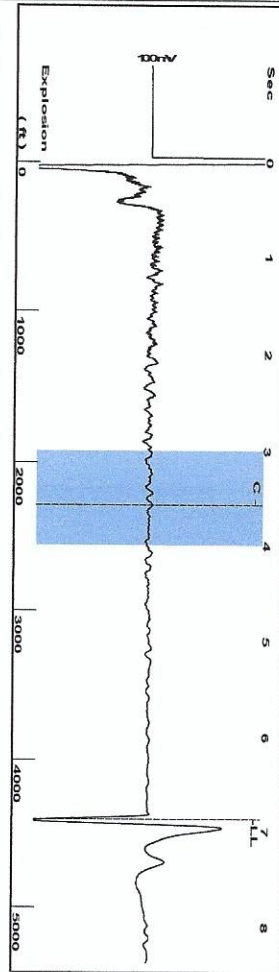
Submitted Electronically

| | | | | | |
|---|--|----------------|---------------------|----------------------|---------------------------------|
| Do NOT Write in This Space - KCC USE ONLY | Date Tested: _____ | Results: _____ | Date Plugged: _____ | Date Repaired: _____ | Date Put Back in Service: _____ |
| | Review Completed by: _____ Comments: _____ | | | | |
| TA Approved: <input type="checkbox"/> Yes <input type="checkbox"/> Denied Date: _____ | | | | | |

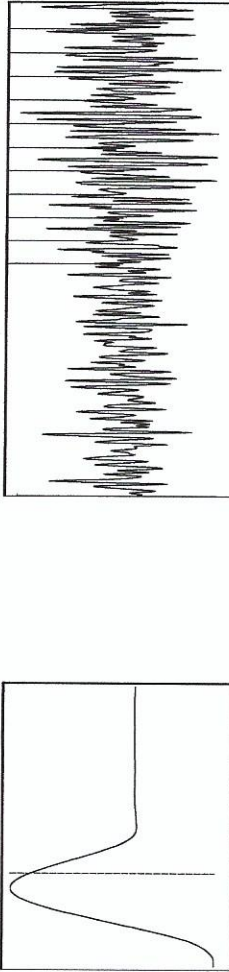
Mail to the Appropriate KCC Conservation Office:

| | | |
|--|--|--------------------|
| | KCC District Office #1 - 210 E. Frontview, Suite A, Dodge City, KS 67801 | Phone 620.682.7933 |
| | KCC District Office #2 - 3450 N. Rock Road, Building 600, Suite 601, Wichita, KS 67226 | Phone 316.337.7400 |
| | KCC District Office #3 - 137 E. 21st St., Chanute, KS 66720 | Phone 620.902.6450 |
| | KCC District Office #4 - 2301 E. 13th Street, Hays, KS 67601-2651 | Phone 785.261.6250 |

Group: Sawyer Well: LEMON TRUST #1-16 (acquired on: 11/02/17 09:16:23)



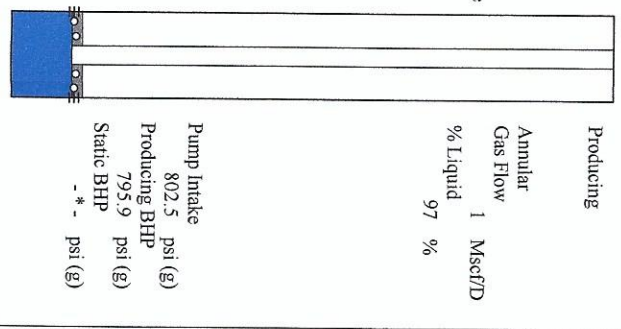
Filter Type High Pass Automatic Collar Count Yes
 Manual Acoustic Velo 1289.54 ft/s Manual JTS/sec 20.9205
 Time 6.864 sec
 Joints 142.828 Jts
 Depth 4401.94 ft



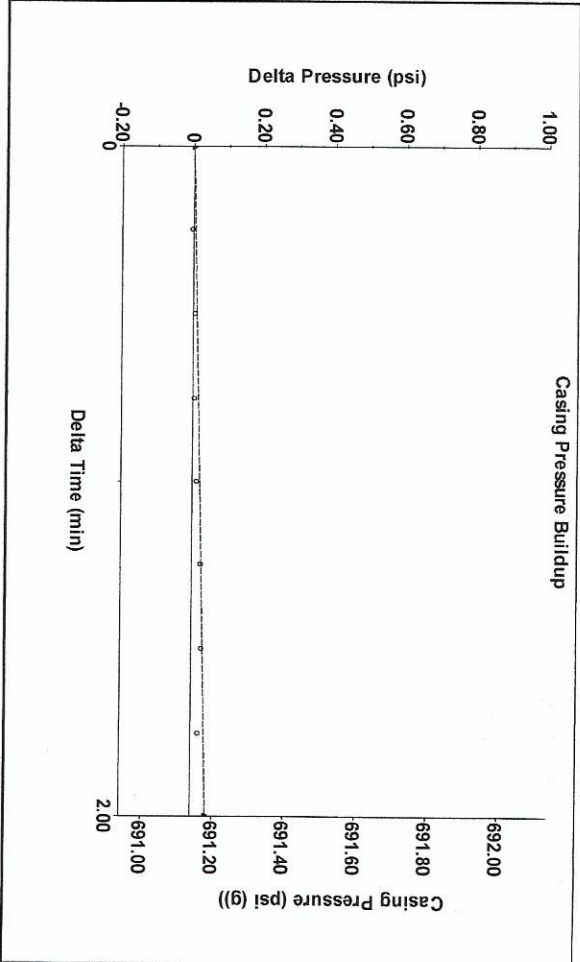
Analysis Method: Automatic

Group: Sawyer Well: LEMON TRUST #1-16 (acquired on: 11/02/17 09:16:23)

| Production Current | Potential | Casing Pressure | Producing |
|--------------------------------|-------------|---|---------------------------|
| Oil - *- | BBL/D - *- | 691.1 psi (g) | Annular Gas Flow 1 Masc/D |
| Water - *- | BBL/D - *- | Casing Pressure Buildup 0.042 psi | % Liquid 97 % |
| Gas - *- | Masc/D - *- | 2.00 min | |
| IPR Method PBHP/SBHP | Vogel - *- | Gas/Liquid Interface Pressure 771.7 psi (g) | |
| Production Efficiency 0.0 | | Liquid Level Depth 4401.94 ft | |
| Oil 40 deg API | | Pump Intake Depth 4501.00 ft | |
| Water 1.05 Sp.Gr:H2O | | Formation Depth 4480.00 ft | |
| Gas 0.66 Sp.Gr:AIR | | | |
| Acoustic Velocity 1282.62 ft/s | | | |

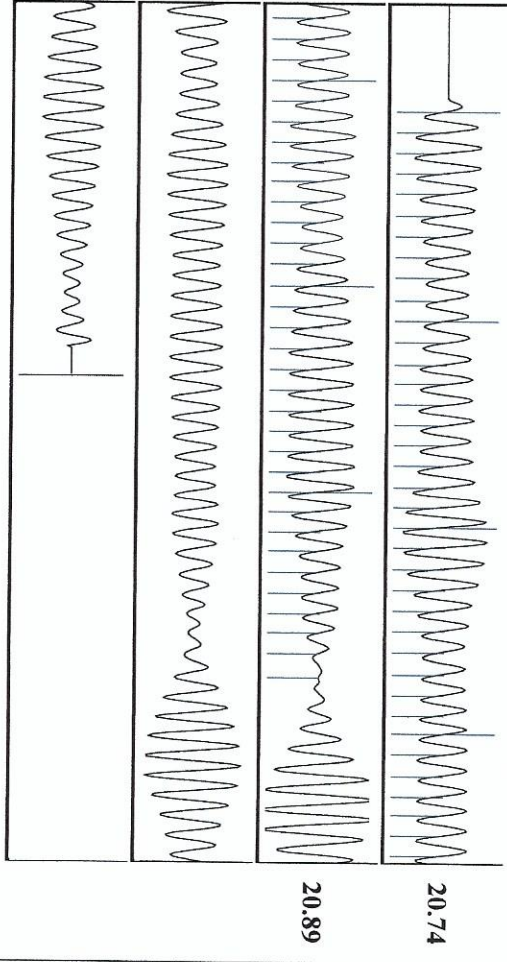


Group: Sawyer Well: LEMON TRUST #1-16 (acquired on: 11/02/17 09:16:23)



Change in Pressure 0.04 psi PTT 3440
 Change in Time 2.00 min Range 0 - ? psi

Group: Sawyer Well: LEMON TRUST #1-16 (acquired on: 11/02/17 09:16:23)



Acoustic Velocity 1282.62 ft/s Joints counted 69
 Joints Per Second 20.8082 Jts/sec Joints to liquid level 142.828
 Depth to liquid level 4401.94 ft Filler Width 18.9205
 Automatic Collar Count Yes Time to 1st Collar 0.248 22.9205 3.564

Conservation Division
District Office No. 1
210 E. Frontview, Suite A
Dodge City, KS 67801



Phone: 620-682-7933
<http://kcc.ks.gov/>

Pat Apple, Chairman
Shari Feist Albrecht, Commissioner
Jay Scott Emler, Commissioner

Sam Brownback, Governor

November 14, 2017

Loveness Mpanje
F. G. Holl Company L.L.C.
9431 E CENTRAL STE 100
WICHITA, KS 67206-2563

Re: Temporary Abandonment
API 15-007-22708-00-01
LEMON TRUST OWWO 1-16
NE/4 Sec.16-30S-13W
Barber County, Kansas

Dear Loveness Mpanje:

"Your temporary abandonment (TA) application for the well listed above has been approved. In accordance with K.A.R. 82-3-111 the TA status of this well will expire 11/14/2018.

- * If you return this well to service or plug it, please notify the District Office.
- * If you sell this well you are required to file a Transfer of Operator form, T-1.
- * If the well will remain temporarily abandoned, you must submit a new TA application, CP-111, before 11/14/2018.

You may contact me at the number above if you have questions.

Very truly yours,

Michael Maier"