



TEMPORARY ABANDONMENT WELL APPLICATION

OPERATOR: License# _____
 Name: _____
 Address 1: _____
 Address 2: _____
 City: _____ State: _____ Zip: _____ + _____
 Contact Person: _____
 Phone: (_____) _____
 Contact Person Email: _____
 Field Contact Person: _____
 Field Contact Person Phone: (_____) _____

API No. 15- _____
 Spot Description: _____
 _____ - _____ - _____ - _____ Sec. _____ Twp. _____ S. R. _____ E W
 _____ feet from N / S Line of Section
 _____ feet from E / W Line of Section
 GPS Location: Lat: _____, Long: _____
(e.g. xx.xxxxx) (e.g. -xxx.xxxxx)
 Datum: NAD27 NAD83 WGS84
 County: _____ Elevation: _____ GL KB
 Lease Name: _____ Well #: _____
 Well Type: (check one) Oil Gas OG WSW Other: _____
 SWD Permit #: _____ ENHR Permit #: _____
 Gas Storage Permit #: _____
 Spud Date: _____ Date Shut-In: _____

	Conductor	Surface	Production	Intermediate	Liner	Tubing
Size						
Setting Depth						
Amount of Cement						
Top of Cement						
Bottom of Cement						

Casing Fluid Level from Surface: _____ How Determined? _____ Date: _____
 Casing Squeeze(s): _____ to _____ w / _____ sacks of cement, _____ to _____ w / _____ sacks of cement. Date: _____
(top) (bottom) (top) (bottom)
 Do you have a valid Oil & Gas Lease? Yes No
 Depth and Type: Junk in Hole at _____ Tools in Hole at _____ Casing Leaks: Yes No Depth of casing leak(s): _____
(depth) (depth)
 Type Completion: ALT. I ALT. II Depth of: DV Tool: _____ w / _____ sacks of cement Port Collar: _____ w / _____ sack of cement
(depth) (depth)
 Packer Type: _____ Size: _____ Inch Set at: _____ Feet
 Total Depth: _____ Plug Back Depth: _____ Plug Back Method: _____

Geological Data:

Formation Name	Formation Top	Formation Base	Completion Information
1. _____	At: _____ to _____ Feet	Perforation Interval _____ to _____ Feet or Open Hole Interval _____ to _____ Feet	
2. _____	At: _____ to _____ Feet	Perforation Interval _____ to _____ Feet or Open Hole Interval _____ to _____ Feet	

UNDER PENALTY OF PERJURY I HEREBY ATTEST THAT THE INFORMATION CONTAINED HEREIN IS TRUE AND CORRECT TO THE BEST OF MY KNOWLEDGE

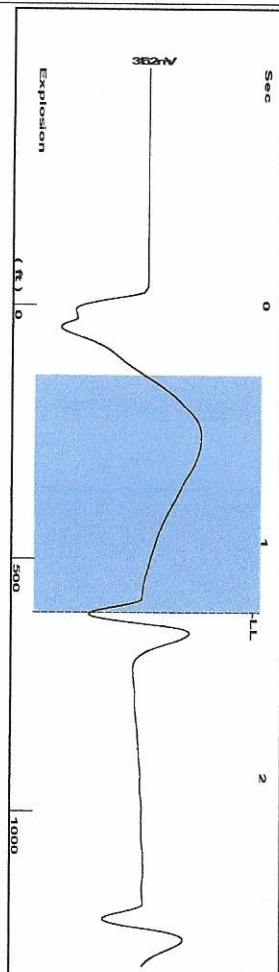
Submitted Electronically

Do NOT Write in This Space - KCC USE ONLY	Date Tested: _____	Results: _____	Date Plugged: _____	Date Repaired: _____	Date Put Back in Service: _____
	Review Completed by: _____ Comments: _____				
TA Approved: <input type="checkbox"/> Yes <input type="checkbox"/> Denied Date: _____					

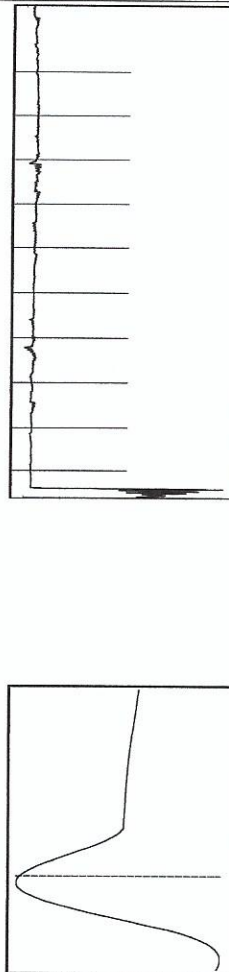
Mail to the Appropriate KCC Conservation Office:

	KCC District Office #1 - 210 E. Frontview, Suite A, Dodge City, KS 67801	Phone 620.682.7933
	KCC District Office #2 - 3450 N. Rock Road, Building 600, Suite 601, Wichita, KS 67226	Phone 316.337.7400
	KCC District Office #3 - 137 E. 21st St., Chanute, KS 66720	Phone 620.902.6450
	KCC District Office #4 - 2301 E. 13th Street, Hays, KS 67601-2651	Phone 785.261.6250

Group: Coldwater Well: Woolfolk 1-32 (acquired on: 10/27/17 10:13:27)



Filter Type High Pass Automatic Collar Count Yes
 Manual Acoustic Velocity 297 ft/s Manual JTS/sec 11.0988
 Time 1.295 sec
 Joints 14.3729 Jts
 Depth 603.66 ft



Analysis Method: Automatic

Group: Coldwater Well: Woolfolk 1-32 (acquired on: 10/27/17 10:13:27)

Production	Potential	Casing Pressure	Producing
Current	-*- BBL/D	44.0 psi (g)	Annular
Oil	-*- BBL/D	Casing Pressure Buildup	Gas Flow
Water	-*- Mscf/D	0.086 psi	-*- Mscf/D
Gas	-*- Mscf/D	2.25 min	% Liquid
TPR Method	Vogel	Gas/Liquid Interface Pressure	100 %
PBHP/SBHP	-*-	45.3 psi (g)	
Production Efficiency	0.0		
Oil	40 deg API	Liquid Level Depth	
Water	1.05 Sp-Gr-H2O	603.66 ft	
Gas	1.01 Sp-Gr-AIR	Pump Intake Depth	
Acoustic Velocity	932.297 ft/s	Formation Depth	
		6255.00 ft	
Formation Submergence			Pump Intake
Total Gaseous Liquid Column HT (TVD)			-*- psi (g)
Equivalent Gas Free Liquid HT (TVD)			Producing BHP
			2614.7 psi (g)
			Static BHP
			-*- psi (g)



Group: Coldwater Well: Woolfolk 1-32 (acquired on: 10/27/17 10:13:27)

NO PRESSURE DATA AVAILABLE

Change in Pressure 0.09 psi PT13440
 Change in Time 2.25 min Range
 0 - ? psi

Group: Coldwater Well: Woolfolk 1-32 (acquired on: 10/27/17 10:13:27)

No Collar Count Data Available

Conservation Division
District Office No. 1
210 E. Frontview, Suite A
Dodge City, KS 67801



Phone: 620-682-7933
<http://kcc.ks.gov/>

Pat Apple, Chairman
Shari Feist Albrecht, Commissioner
Jay Scott Emler, Commissioner

Sam Brownback, Governor

November 14, 2017

Loveness Mpanje
F. G. Holl Company L.L.C.
9431 E CENTRAL STE 100
WICHITA, KS 67206-2563

Re: Temporary Abandonment
API 15-033-21537-00-00
WOOLFOLK 1-32
NW/4 Sec.32-34S-19W
Comanche County, Kansas

Dear Loveness Mpanje:

"Your temporary abandonment (TA) application for the well listed above has been approved. In accordance with K.A.R. 82-3-111 the TA status of this well will expire 11/14/2018.

- * If you return this well to service or plug it, please notify the District Office.
- * If you sell this well you are required to file a Transfer of Operator form, T-1.
- * If the well will remain temporarily abandoned, you must submit a new TA application, CP-111, before 11/14/2018.

You may contact me at the number above if you have questions.

Very truly yours,

Michael Maier"