



Fall & Associates

Stake and Elevation Service

P.O. Box 222

Pretty Prairie, KS. 67570

785-243-7506

Date 10-31-17

Invoice Number 1027171

MURFIN DRILLING

1-20

Culwell 'G'

Operator

Number

Farm Name

Cheyenne-KS

20

2s

37w

1320'FNL 1980'FWL

County-State

S

T

R

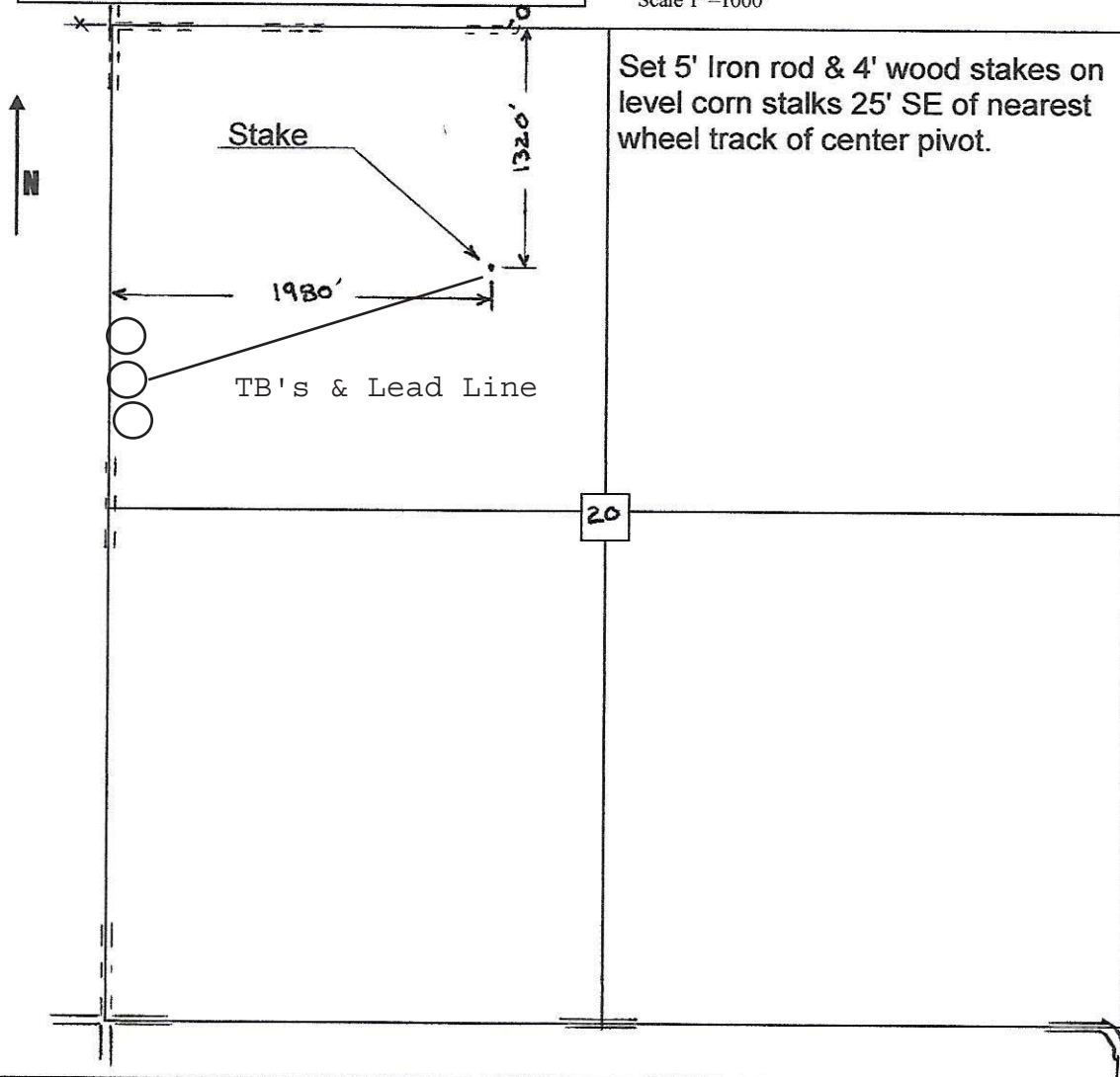
Location

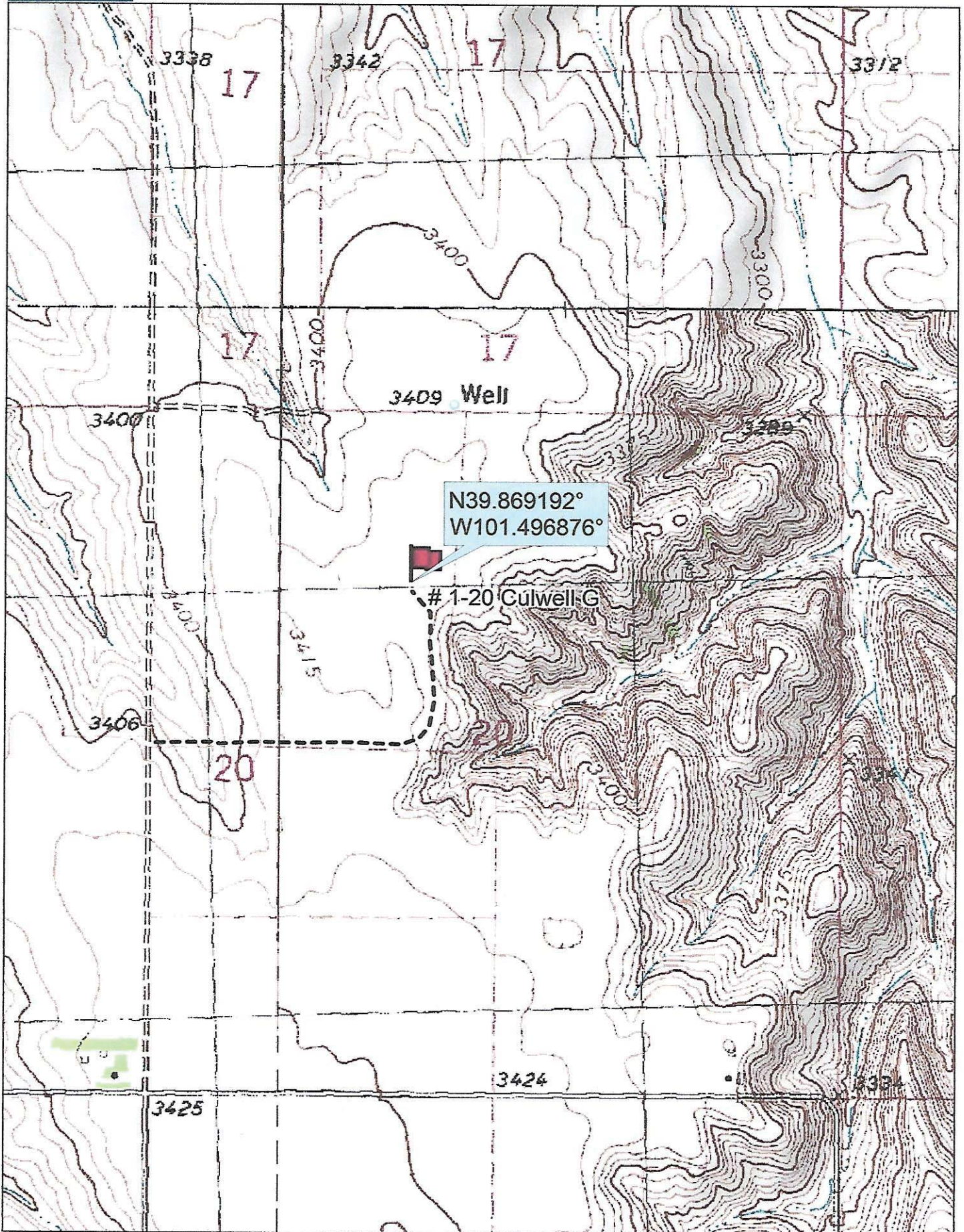
Murfin Drilling
250 N Water
Suite 300
Wichita, KS. 67202

Elevation 3413 Gr

Ordered By: Shauna

Scale 1"=1000'





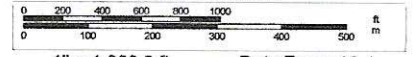
Data use subject to license.

© DeLorme. Topo North America™ 9.

www.delorme.com



Scale 1 : 12,000



1" = 1,000.0 ft

Data Zoom 13-1