

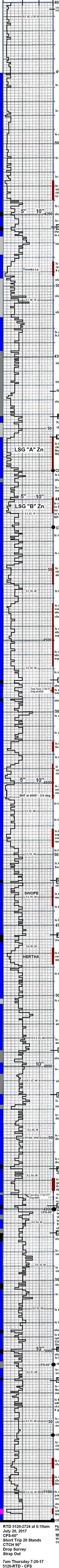


FIELD REPORT

API 15-057-20983-0000
 Vincent Oil Corporation
 Demuth 1-18
 2310 FNL & 2142 FWL
 Sec. 18-T28S-R21W
 Ford County, Kansas
 KB 2396

Geologist on Location
 at 3750 feet

SHT at 312' - 3/4 deg
 598' - 1/2 deg
 995' - 1/2 deg
 1501' - 3/4 deg
 2003' - 1-1/4 deg
 2229' - 1-1/4 deg
 2514' - 3/4 deg
 2927' - 3/4 deg
 3308' - 1-1/4 deg
 3497' - 1 deg
 3973' - 1 deg



RTD 5120-2724 at 6:19am
 July 20, 2017
 CFS-60"
 Short Trip 20 Stands
 CTCH 90"
 Drop Survey
 Strap Out

7am Thursday 7-20-17
 5120-RTD - CFS

ELI WL Svc. on location at
 1:20 pm 7-20-17

Logging off bottom at 3:15pm
 LTD 5122-2724

Finished logging at 4:30pm

Decision based on lack
 of quality dolomite development
 and associated zones to PLUG and
 ABANDON

NO DRILL STEM TESTS