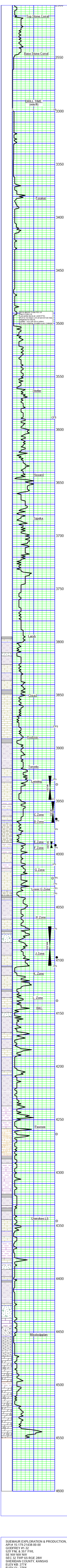


SUEMAUR EXPLORATION & PRODUCTION, LLC
 API # 15-179-21438-00-00
 GODFREY #1-32
 529' FNL & 351' FWL
 SE NW NW NW
 SEC 32 TWP 6S RGE 28W
 SHERIDAN COUNTY, KANSAS
 ELEV KB: 2774'
 ELEV GL: 2769'
 RTD: 4550'
 SPUD: 10-26-2017
 RTD: 11-03-17



SAMPLE DESCRIPTION

SH, Red/SD, Clear, calc + Dolo, Lt gray (3360)

LS; Cream/gray, fine crystalline to dense, fossil-mottled, cherty + SD, Red, silty, hard (3370)

LS; Gray/cream, fine crystalline to dense, foss, sl dolo + SH; Gray (3380)

LS; Gray/dark gray, fine crystalline, mottled, sl dolo, cher-tan/orange (3390)

LS; Cream/gray, mottled, very foss, dense, trace dead stain + SH; Dark gray (3400)

LS; Brown/gray, dense, foss, cherty (white-blocky) SH; Brown/green-gray, silty (3410)

LS; Cream/gray, dense, foss, chalky, dolo, cherty (cream/ang-blocky) + SH; Gray (3420) + SH; Red/brown, sandy (3430)

LS; Cream/tan/gray, fine crystalline to dense, foss, mottled, chalky, cherty (angular) (3440)

LS; Cream/gray, mottled, dense, chalky w/gray shale inclusion (3450)

LS; Gray/dark gray, mottled, foss, dense, chalky + SH; Gray (3460)

LS; Brown, fine crystalline, dolo, chalky + SH; Dark gray (3470)

LS; Cream, fine crystalline, chalky, tr dead stain + SD; Gray, fine grained, angular, friable (3480-3490) + SH; Dark gray (3500)

LS; Cream/gray, fine crystalline to dense, chalk + SD, Gray, very fine grained, friable /coarse loose + SH, Red, sandy (3500/15-30')

SD; Gray/cream, very fine to fine grained, well-cemented + SH; Red/gray (3510-3520)

LS; Cream/lt gray, fine crystalline to dense, sandy, chalky + SD, Gray, very fine grained, silty + SH, Red/gray, sandy (3530)

LS; Cream/tan, dense, subchalky + LS; Cream/gray, sandy, chalky + SH; Red/gray (3540)

LS; Gray, dense, sandy + SH; Gray, blocky (3550)

SD; Gray/tan, very fine to fine grained, friable, silty/SH; Gray, sandy + LS; Tan dense, sl foss (3560-3570)

SH; Dark gray/black (3570)

LS; Cream/gray, dense, sandym sl foss + SH; Gray, sandy (3580)

LS; Gray, dense, foss, sl chalky + LS; Cream, fine crystalline, foss, subgran + SH; Black (3588)

LS; Cream/gray, fine crystalline, foss, mottled in part, sl cherty w/tr ppt dead stain (3588/15')+ SD; Gray, well-cemented, silty (3588/30')

LS; Cream, fine crystalline, fossil/ool, granm chalky (3600)

LS; Cream/tan/gray, fine crystalline, dense, foss (3610) + SH; Gray, sandy (3620)

LS; Cream, fine crystalline, fossil/ool, granular + LS, Gray, dense (3630)

LS; Cream/tan, fine crystalline, foss, dolo (3640)

LS; Cream/tan, fine crystalline, foss, gran, w/tr poor moldic por, tr dead stain (3650)

LS; Cream/tan, fine crystalline, fossil-granular, chalky (3660)

LS; Cream/lt gray, fine crystalline, ool/foss, sl dolo (3670)

LS; Cream/tan, very fine crystalline, sl dolo, sl cherty + SH; Gray (3680)

LS; Tan/lt gray, very fine crystalline to dense, sl dolo + SH; Red, sandy (3690)

LS; Cream, fine crystalline, ool-granular, chalky (3700)

LS; Cream, fine crystalline, ool-granular, chalky w/chert inclusions + LS; Tan, dense + SH; Maroon, sandy (3710)

LS; Cream/gray, fine crystalline to dense, foss, dolo, cherty w/tr poor moldic por, trace dead stain (3720)

LS; Cream, fine crystalline to dense, foss, sl dolo, chalky (white-soft) + SH; Red (3730)

LS; Cream/lt gray, fine crystalline, foss, chalky (soft), sl glauc wired shale impurity (3740)

SH; Red, sandy, + LS; Cream/lt gray, fine to med crystalline, foss, chalky, sl cherty (3750)

LS; Cream, fine crystalline, foss, chalky (softP + SH; Red, silty (3760)

LS; Cream, fine crystalline, foss, chalky (soft) w/trace black shale (3770-3780)

LS; Cream/tan, fine crystalline, very chalky (soft) (3790)

LS; Cream, fine crystalline to dense + SH; Gray (3800)

LS; Cream/lt gray, fine crystalline to dense, sl foss, chalky + SH; Bluish-gray (3810)

SH; Black + LS; Cream/gray, fine crystalline, foss, chalky (3820)

LS; Gray/cream, fine crystalline, foss, chalky (3830)

LS; Cream, fine crystalline, chalky +SD, Gray, fine grainedm well-cem + SH; Red (3840)

SH; Red, silty (3850)

LS; Cream/lt gray, fine crystalline, foss, chalky, trace dead stain (block) (3850)

LS; Cream/lt gray, very fine crystalline, sl foss (3850/15-30')

LS; Tan, dense, foss (3860)

SH; Black (flood 3910)

LS; Cream/tan, fine crystalline, sl foss, chalky + SH; Gray (3870)

LS; Cream/lt gray, fine crystalline to dense, foss, chalky, sl dolo (3880)

LS; Cream, fine crystalline, foss w/tr poor moldic por, two pieces in tray w/pot dead stain (black), nso, no odor (3880/20')

LS; Cream/lt gray, fine crystalline, foss, chalky, cherty (3900)

SH; Black (flood 3910)

LS; Tan/brown, dense, sl foss, hard (3910)

SH; Bluish-gray sandy + SH; Red, silty (3920)

SH; Red, sandy (3930)

LS; Cream, fine crystalline, chalky (3930)

LS; Gray, fine crystalline, foss, shaley in part (red) (3932/20')

SH; Red/gray, silty-sandy (3930/40'-3940)

LS; Cream/white, fine crystalline, ool-granular, w/por moldic/intergranular por, tarry black stain, vsfso, faint odor, patchy dark brown stain on dry (3948)

LS; Cream/white, fine crystalline, ool/foss, very chalky, w/trace dead flakey oil (black) + LS; Cream/gray, dense, sl foss (3948/20')

LS; Cream, fine crystalline to dense, chalky, cherty (orange-angular) + SH; Red/gray (3948/40')

LS; Cream, fine crystalline, chalky (3960)

SH; Black + SH; Red, sandy + LS; Cream, fine crystalline, foss, chalky (3968)

SH; Maroon, sandy (3968/20')

LS; Cream/lt gray, fine crystalline, fossil/ool, chalky w/air to good moldic por, silty (black), fair odor, dark brown sat on dry (3968/40-60')

trace blue/gray shale (3968/60')

SH; Red, silty + LS; Cream, fine crystalline, foss, chalky (3970/ 40-60')

LS; Cream/white, fine crystalline, foss, chalky, dolomitic, tr pyrite, cherty (cream/blocky) sil foss (3976/20-40') very chalky (3985)

LS; Cream/lt gray, fine crystalline, foss, very chalky, cherty (3994)

decrease chert (3994/20')

SH; Dark gray/red (3994/20')

LS; Lt gray, fine to coarse crystalline, ool/foss, w/air moldic & intercrystalline por, vsfso (dark brown-heavy), odor, med-brown patchy sat on dry (tr 3994/20' incr 3994/40') LS; Lt gray, fine crystalline, foss, chalky (3994/60') SH; Green-gray (4005/poor sample- 4005/20')

LS; Crm, lineto coarse crys/ dns, ool-granular, cherty, chalky, sl dolo, sl shaley (red) wired shale discoloration, slight edge stain on dry (4005/20')

LS; Crm, tan, fine to coarse crys-dns, foss (cherted frag), subgran to gran, w/trace (1-2pc) of poor ppt por, w/vsfo (crushed sample) (4005/40-60')

LS; Crm/lt gray, fine crys to dns, foss, chalky, sl shaley (red) w/shale discoloration + SH; Red/gray (4010/40') (40220)

LS; Crm, fine crys, foss, shaley in part + SH; Red (4022/20')

LS; Crm, fine crys, sl dolo, fossil/ool in part, tr poor moldic por (1 pc) crushed sample w/vsfo- ppt droplet (4022/40')

LS; Tan, fine crys to dns, foss, chalky, cherty (4022/60')

LS; Crm/tan, fine crys, foss, chalky, tr moldic por, nso, lt gray stain on dry + SH; Red-brn (4028/20'), trace vug por, nso (4028/40')

LS; Cream/white, fine crys dolo, chalky (4032/20')

LS; Crm lt gray, fine to cse crys, foss-subgran, chalky, cherty + SH; Blue-gray, silty (4032/20')

LS; Cream/white, fine crystalline to dense, chalky, very cherty(foss-ang)(4037/30') + SH; Dark gray/maroon (4037/45')

SH; Black/maroon (4050)

SH; Brown, dense, foss (4060)

SH; Gray, sandy (4060)

SH; Maroon, sandy (4070)

LS; Cream/tan, fine crystalline to dense, foss, chalky (4070)

LS; Cream/lt gray, fine crystalline, foss, chalky, chert inclusions (4073/20')

LS; Cream/brown, dense, hard, foss, chalky, cherty (4073/40')

SH; Black (4080)

LS; Cream, dense + SH; Red, sandy (4080)

SH; Red, sandy + LS; Cream, dense, chalky (4090)

LS; Lt gray, dense w/coarse crystalline, foss-granular w/air to good moldic por, sfo, odor, dark brown full sat on dry (4100-4105)

LS; Cream/lt gray, fine crystalline, foss, chalky w/tr poor moldic por, vsfo (4105-4105/20') + tr SH; Gray (4105/40')

SH; Maroon sandy + Switched to PDC bit @4105'

SH; Red, sandy (4130)

LS; Cream/gray, fine crystalline, foss, gran, chalky, tr por moldic por, tr stain (dark brown) (4132/20')

SH; Black (4140)

SH; Maroon, silty-sandy (4140)

SH; Red/gray, sandy (4150)

LS; Cream/tan, fine crystalline, ool/foss, gran, tr poor moldic por, vsfso (4150)

LS; Lt gray, dense, foss, chalky (4155)

LS; Cream/gray, fine crystalline to dense, foss, chalky (4155-4155/20')

LS; Gray, dense, foss, blocky (4150/40')

SH; Red/gray, silty, (4160-4170)

SD; Red, silty-sandy (4180)

LS; Cream, dense, sl fos (4180)

SH; Gray/red, sandy + SD; Red/maroon, fine grained, silty-shaley (4190)

SH; Red/gray, green, silty-sandy + LS; Lt gray/cream, dense, foss + SD; Red, fine grained, angular (4200-4210)

LS; Cream/lt gray, dense, foss (4220-4230)

SH; Red/gray, silty-sandy (4230)

SH; Red/gray, sandy + SD; Lt gray, very fine grained + LS; Cream/tan, dense (4240)

SH; Red/gray, sandy + SD; Gray, very fine grained, calc + LS; Tan/dense, cherty (4250)

SH; Reddish-brown, sandy + LS; Lt gray, dense, hard (4260)

SH; Red/gray, sandy + LS; Gray, dense, sandy, chalky (4270)

LS; Cream, dense, sl foss, chalky, trace poor moldic por, vsfso + LS; Gray, dense, arg, chalky (4270/20')

LS; Cream/gray, dense, arg, chalky + SH; Gray (4270/60')

LS; Cream, fine crystalline to dense, arg, LS, Gray, dense, sl chalky (4280)

LS; Gray, dense, arg, sl chalky + SH; Red (4290)

LS; Gray, dense, chalky, arg, sdy (4300)

SH; Gray + SH; Black + SH; Maroon (4310-4320)

LS; Cream, fine crystalline, foss, gran, chalky, moldic por, nso (4320)

SH; Black/gray (4330)

SH; Gray + LS; Cream, fine crystalline, foss, chalky + LS; Tan, dense (4340)

SH; Gray, + LS; Gray, arg, chalky (4344/15')

SH; Black (4344/15') (flood 4350)

LS; Gray, dense, sandy + SH; Gray, sandy (4350-4360)

LS; Cream/tan, fine crystalline, sl foss, cherty w/trace poor moldic por w/vsfo (4370)

SH; Dark gray (4376/15')

LS; Cream/lt gray, fine crystalline to dense, foss, chalky + SH; Gray, silty (4375/15')

LS; Cream, fine crystalline, foss, chalky, sl cherty + LS; Tan, dense, blocky + SH; Gray, blocky, trace SD, Clear, ang, friable (4375/30')

LS; Cream/tan, fine crystalline, foss (4380)

SH; Red/maroon/green + LS; Cream/tan, fine crystalline to dense, foss (4390-4400)

SH; Red/gray, sandy + SD; Red, fine grained, friable + LS; Cream/tan, dense, foss (4410-4420)

LS; Cream, dense, foss + Chert, Tan + SH; Red/gray, trace SH; Black, hard, tr SS; Clear/white, ang, hard (4430)

LS; Cream, fine crystalline, foss, sandy in part+ LS; Tan, dense, +SD; Clear, fine to coarse, trace of mustard yellow shale(4440)

SH; Red, sandy + SD; Clear, coarse, w-ang + LS; Cream/tan/gray, dense, hard (4450)

SD; Red (shale impurity)/gray, fine to med, ang, poorly sorted, friable to well cem (4460-4460/15')

SS; White, fine graine, subangular, hard + SH; Mustard yellowm blocky, trace Chert, Gray (4460/30')

Chert; Cream/tan/orange, angular + LS; White, dolo, fine crystalline (4460/45')

Chert; White, blocky + LS; Lt gray, dolo, fine crystalline + SH; Red (4470-90)

Chert; White/tan, sl trip, blocky (4500) (flood 4510)

Chert; White/tan, sl trip, blocky + Chert, White/translu, blocky, trace LS, Gray, dense, blocky, trace SH; Black (4520)

Dol; Cream, med crystalline + Chert, white, sharp (4530)

LS; Cream, fine crystalline, dolo + Chert, white, blocky (4540)

LS; Cream, fine to med crystalline dolo, very chalky (soft), tr Dolo, gray, med crystalline (4550) + SH; Black (4550/30')

LS; Cream, dolo, very chalky w/trace red shale discoloration + SH; Red (4550/45')

DST #1
 3926 to 3946'
 45-60-45-90 min
 IF: Blow built to BOB at 19 1/4 min.
 ISI: No blow back
 FF: Blow built to BOB at 23 1/2 min.
 FSI: No blow back
 Recovered:
 300' MCW 94%w/5%
 220' MW 60%w/40%
 SIP: 1231-1221#
 FP: 25-164/163/243#
 HP: 1934-1915#
 BHT: 118F
 CH: 68,000 ppm

DST #2
 3950 to 3970'
 45-60-15-90 min.
 IF: Blow built to BOB at 21' min.
 ISI: No blow back
 FF: Blow built to 6"
 Recovered:
 365' MCW 75%w/25%
 SIP: 1180-1210#
 FP: 20-146/151/175#
 HP: 1945-1908#
 BHT: 118F
 CH: 58,000 ppm

DST #3
 3988 to 3994'
 30-45-30-60 min.
 IF: 1/4" Blow up open, built slightly, died back to surface blow
 ISI: No blow back
 FF: No blow
 FSI: No blow back
 Recovered:
 2' Mud
 SIP: 1186-1084#
 FP: 17-118/18-19#
 HP: 1980-1967#
 BHT: 118F
 CH: 111F

DST #4
 4068-4105'
 30-60-30-90 min.
 IF: B O B, in 10% min
 CIP: 3' Return blow
 FF: B O B, in 10 min
 FCIP: 6' Return blow
 Recovered:
 475' Gas in pipe
 SIP: 1186-1084#
 FP: 38-115/160-120#
 HP: 2057-2042
 BHT: 120F
 Oil Grav.: 37 API

SUEMAUR EXPLORATION & PRODUCTION, LLC
 API # 15-179-21438-00-00
 GODFREY #1-32
 529' FNL & 351' FWL
 SE NW NW NW
 SEC 32 TWP 6S RGE 28W
 SHERIDAN COUNTY, KANSAS
 ELEV KB: 2774'
 ELEV GL: 2769'
 SPUD: 10-26-2017

