



**TRILOBITE
TESTING, INC.**

DRILL STEM TEST REPORT

Concorde Resources Corp

27-15-34 Logan Ks

111 S. Main St.
Eufaula, Ok 74432

Reta 2-27

Job Ticket: 63863

DST#: 4

ATTN: Larry Nicholson

Test Start: 2017.08.01 @ 14:00:29

GENERAL INFORMATION:

Formation: **Pawnee**

Deviated: No Whipstock: ft (KB)

Time Tool Opened: 16:06:59

Time Test Ended: 19:22:29

Test Type: Conventional Bottom Hole (Reset)

Tester: Brandon Turley

Unit No: 79

Interval: 4376.00 ft (KB) To 4410.00 ft (KB) (TVD)

Reference Elevations: 2987.00 ft (KB)

Total Depth: 4410.00 ft (KB) (TVD)

2977.00 ft (CF)

Hole Diameter: 7.88 inches Hole Condition: Good

KB to GR/CF: 10.00 ft

Serial #: 8166 Outside

Press@RunDepth: 17.20 psig @ 4381.00 ft (KB)

Capacity: 8000.00 psig

Start Date: 2017.08.01

End Date:

2017.08.01

Last Calib.:

2017.08.01

Start Time: 14:00:34

End Time:

19:22:28

Time On Btm:

2017.08.01 @ 16:05:29

Time Off Btm:

2017.08.01 @ 17:19:29

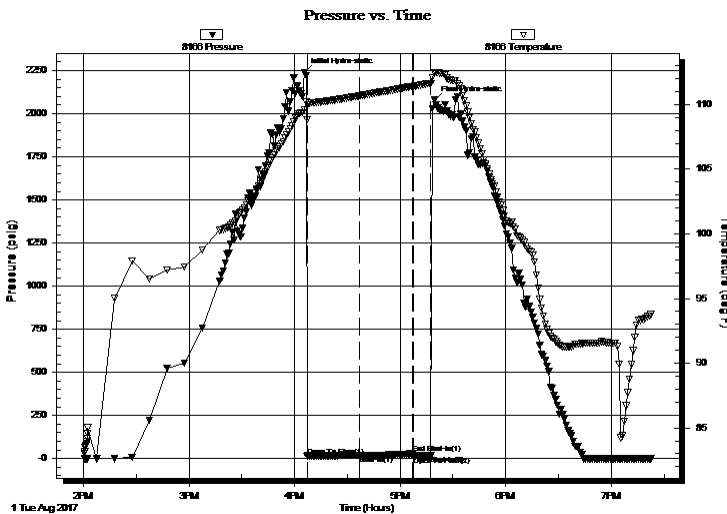
TEST COMMENT: IF: Surface blow died in 5 min.

IS: No return.

FF: No blow.

Pulled tool

PRESSURE SUMMARY



Time (Min.)	Pressure (psig)	Temp (deg F)	Annotation
0	2239.56	109.60	Initial Hydro-static
2	14.41	108.85	Open To Flow (1)
32	17.20	110.67	Shut-In(1)
62	28.16	111.39	End Shut-In(1)
62	16.32	111.40	Open To Flow (2)
72	17.30	111.63	Shut-In(2)
74	2078.69	112.48	Final Hydro-static

Recovery

Length (ft)	Description	Volume (bbl)
1.00	mud oil spots 100%m	0.01

Gas Rates

	Choke (inches)	Pressure (psig)	Gas Rate (Mcf/d)

* Recovery from multiple tests



**TRILOBITE
TESTING, INC.**

DRILL STEM TEST REPORT

Concorde Resources Corp

27-15-34 Logan Ks

111 S. Main St.
Eufaula, Ok 74432

Reta 2-27

Job Ticket: 63863

DST#: 4

ATTN: Larry Nicholson

Test Start: 2017.08.01 @ 14:00:29

GENERAL INFORMATION:

Formation: **Pawnee**

Deviated: No Whipstock: ft (KB)

Time Tool Opened: 16:06:59

Time Test Ended: 19:22:29

Interval: 4376.00 ft (KB) To 4410.00 ft (KB) (TVD)

Total Depth: 4410.00 ft (KB) (TVD)

Hole Diameter: 7.88 inches Hole Condition: Good

Test Type: Conventional Bottom Hole (Reset)

Tester: Brandon Turley

Unit No: 79

Reference Elevations: 2987.00 ft (KB)

2977.00 ft (CF)

KB to GR/CF: 10.00 ft

Serial #: 8875 Inside

Press@RunDepth: psig @ 4381.00 ft (KB)

Start Date: 2017.08.01

End Date:

2017.08.01

Start Time: 14:00:19

End Time:

19:22:13

Capacity: 8000.00 psig

Last Calib.:

2017.08.01

Time On Btm:

Time Off Btm:

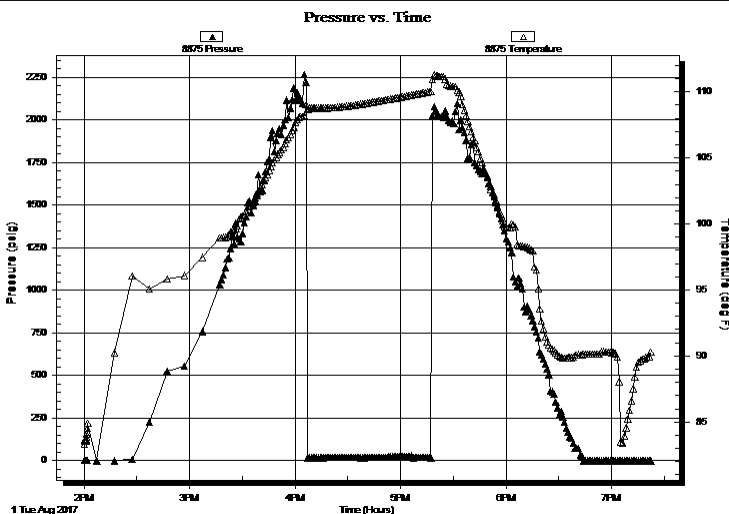
TEST COMMENT: IF: Surface blow died in 5 min.

IS: No return.

FF: No blow.

Pulled tool

PRESSURE SUMMARY



Time (Min.)	Pressure (psig)	Temp (deg F)	Annotation

Recovery

Length (ft)	Description	Volume (bbl)
1.00	mud oil spots 100%m	0.01

Gas Rates

	Choke (inches)	Pressure (psig)	Gas Rate (Mcf/d)

* Recovery from multiple tests

