



TRILOBITE TESTING, INC.

DRILL STEM TEST REPORT

Concorde Resources Corp

27-15-34 Logan Ks

111 S. Main St.
Eufaula, Ok 74432

Reta 2-27

Job Ticket: 63864

DST#: 5

ATTN: Larry Nicholson

Test Start: 2017.08.03 @ 01:07:47

GENERAL INFORMATION:

Formation: **K**
 Deviated: No Whipstock: ft (KB)
 Time Tool Opened: 03:24:47
 Time Test Ended: 06:40:47
Interval: 4170.00 ft (KB) To 4204.00 ft (KB) (TVD)
 Total Depth: 4657.00 ft (KB) (TVD)
 Hole Diameter: 7.88 inches Hole Condition: Good
 Test Type: Conventional Straddle (Reset)
 Tester: Brandon Turley
 Unit No: 79
 Reference Elevations: 2987.00 ft (KB)
 2977.00 ft (CF)
 KB to GR/CF: 10.00 ft

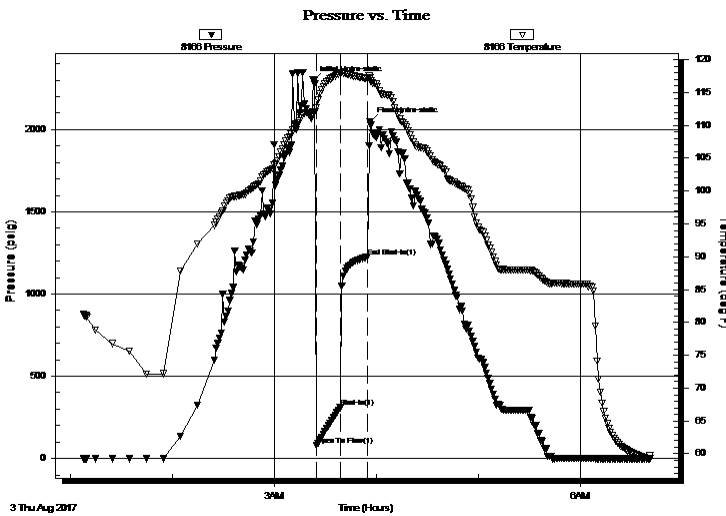
Serial #: 8166

Outside

Press@RunDepth: 309.22 psig @ 4175.00 ft (KB) Capacity: 8000.00 psig
 Start Date: 2017.08.03 End Date: 2017.08.03 Last Calib.: 2017.08.03
 Start Time: 01:07:52 End Time: 06:40:46 Time On Btm: 2017.08.03 @ 03:23:17
 Time Off Btm: 2017.08.03 @ 03:56:17

TEST COMMENT: IF: BOB in 2 min.
 IS: No return.
 FF: Pulled

PRESSURE SUMMARY



Time (Min.)	Pressure (psig)	Temp (deg F)	Annotation
0	2295.33	112.04	Initial Hydro-static
2	81.91	112.70	Open To Flow (1)
16	309.22	117.90	Shut-In(1)
32	1225.49	117.15	End Shut-In(1)
33	2046.36	117.32	Final Hydro-static

Recovery

Length (ft)	Description	Volume (bbl)
378.00	mcw 90%w 10%m	5.30
302.00	w cm 30%w 70%m	4.24

* Recovery from multiple tests

Gas Rates

Choke (inches)	Pressure (psig)	Gas Rate (Mcf/d)



**TRILOBITE
TESTING, INC.**

DRILL STEM TEST REPORT

Concorde Resources Corp

27-15-34 Logan Ks

111 S. Main St.
Eufaula, Ok 74432

Reta 2-27

Job Ticket: 63864

DST#: 5

ATTN: Larry Nicholson

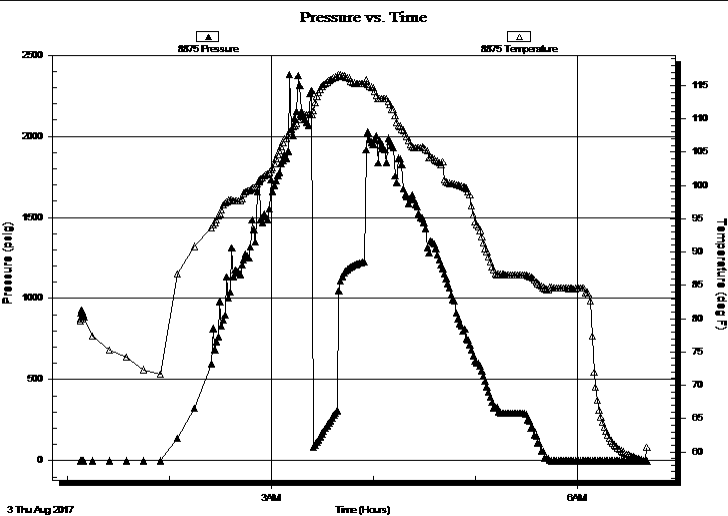
Test Start: 2017.08.03 @ 01:07:47

GENERAL INFORMATION:

Formation: K				Test Type: Conventional Straddle (Reset)
Deviated: No	Whipstock:	ft (KB)		Tester: Brandon Turley
Time Tool Opened: 03:24:47				Unit No: 79
Time Test Ended: 06:40:47				
Interval: 4170.00 ft (KB) To 4204.00 ft (KB) (TVD)			Reference Elevations: 2987.00 ft (KB)	
Total Depth: 4657.00 ft (KB) (TVD)			2977.00 ft (CF)	
Hole Diameter: 7.88 inches	Hole Condition: Good		KB to GR/CF: 10.00 ft	

Serial #: 8875	Inside				Capacity: 8000.00 psig
Press@RunDepth: psig @	4175.00 ft (KB)				Last Calib.: 2017.08.03
Start Date: 2017.08.03	End Date: 2017.08.03				Time On Btm:
Start Time: 01:07:56	End Time: 06:40:50				Time Off Btm:

TEST COMMENT: IF: BOB in 2 min.
IS: No return.
FF: Pulled



PRESSURE SUMMARY

Time (Min.)	Pressure (psig)	Temp (deg F)	Annotation

Recovery

Length (ft)	Description	Volume (bbl)
378.00	mcw 90%w 10%m	5.30
302.00	w cm 30%w 70%m	4.24

Gas Rates

	Choke (inches)	Pressure (psig)	Gas Rate (Mcf/d)

* Recovery from multiple tests



**TRILOBITE
TESTING, INC.**

DRILL STEM TEST REPORT

Concorde Resources Corp
 111 S. Main St.
 Eufaula, Ok 74432
 ATTN: Larry Nicholson

27-15-34 Logan Ks
Reta 2-27
 Job Ticket: 63864 **DST#: 5**
 Test Start: 2017.08.03 @ 01:07:47

GENERAL INFORMATION:

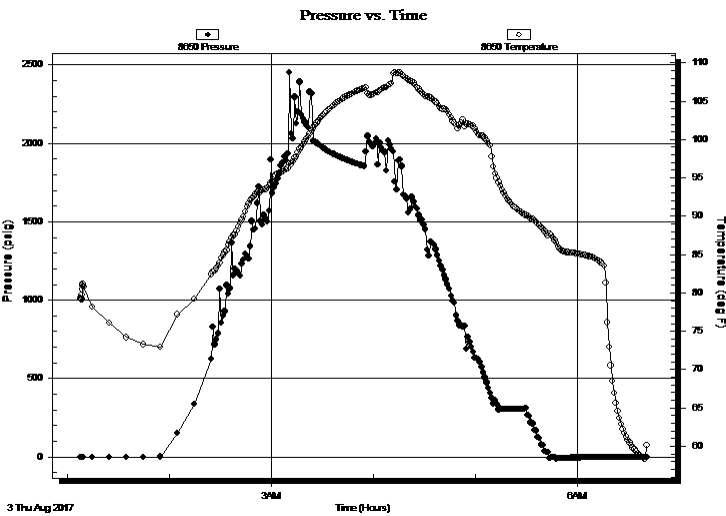
Formation: **K**
 Deviated: No Whipstock: ft (KB)
 Time Tool Opened: 03:24:47
 Time Test Ended: 06:40:47
Interval: 4170.00 ft (KB) To 4204.00 ft (KB) (TVD)
 Total Depth: 4657.00 ft (KB) (TVD)
 Hole Diameter: 7.88 inches Hole Condition: Good

Test Type: Conventional Straddle (Reset)
 Tester: Brandon Turley
 Unit No: 79
 Reference Elevations: 2987.00 ft (KB)
 2977.00 ft (CF)
 KB to GR/CF: 10.00 ft

Serial #: 8650

Press@RunDepth: psig @ ft (KB)
 Capacity: 8000.00 psig
 Start Date: 2017.08.03 End Date: 2017.08.03 Last Calib.: 2017.08.03
 Start Time: 01:08:00 End Time: 06:40:54 Time On Btm:
 Time Off Btm:

TEST COMMENT: IF: BOB in 2 min.
 IS: No return.
 FF: Pulled



PRESSURE SUMMARY

Time (Min.)	Pressure (psig)	Temp (deg F)	Annotation

Recovery

Length (ft)	Description	Volume (bbl)
378.00	mcw 90%w 10%m	5.30
302.00	w cm 30%w 70%m	4.24

* Recovery from multiple tests

Gas Rates

Choke (inches)	Pressure (psig)	Gas Rate (Mcf/d)



**TRILOBITE
TESTING, INC.**

DRILL STEM TEST REPORT

FLUID SUMMARY

Concorde Resources Corp

27-15-34 Logan Ks

111 S. Main St.
Eufaula, Ok 74432

Reta 2-27

Job Ticket: 63864

DST#: 5

ATTN: Larry Nicholson

Test Start: 2017.08.03 @ 01:07:47

Mud and Cushion Information

Mud Type: Gel Chem

Cushion Type:

Oil API:

0 deg API

Mud Weight: 9.00 lb/gal

Cushion Length:

ft

Water Salinity:

32000 ppm

Viscosity: 51.00 sec/qt

Cushion Volume:

bbbl

Water Loss: 9.19 in³

Gas Cushion Type:

Resistivity: 0.00 ohm.m

Gas Cushion Pressure:

psig

Salinity: 4500.00 ppm

Filter Cake: 1.00 inches

Recovery Information

Recovery Table

Length ft	Description	Volume bbbl
378.00	mcw 90%w 10%m	5.302
302.00	w cm 30%w 70%m	4.236

Total Length: 680.00 ft Total Volume: 9.538 bbl

Num Fluid Samples: 0

Num Gas Bombs: 0

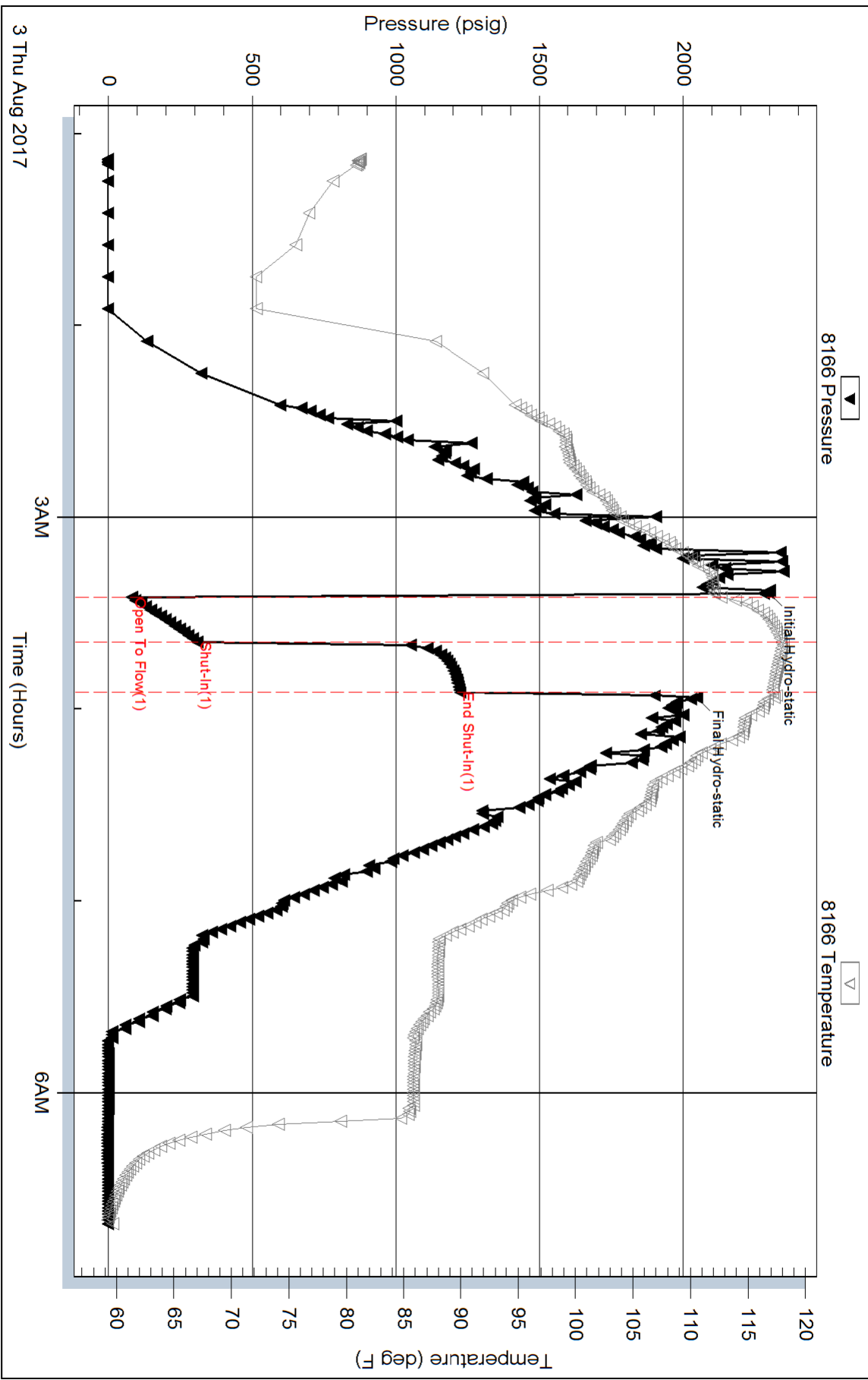
Serial #:

Laboratory Name:

Laboratory Location:

Recovery Comments: .26@60=32000

Pressure vs. Time



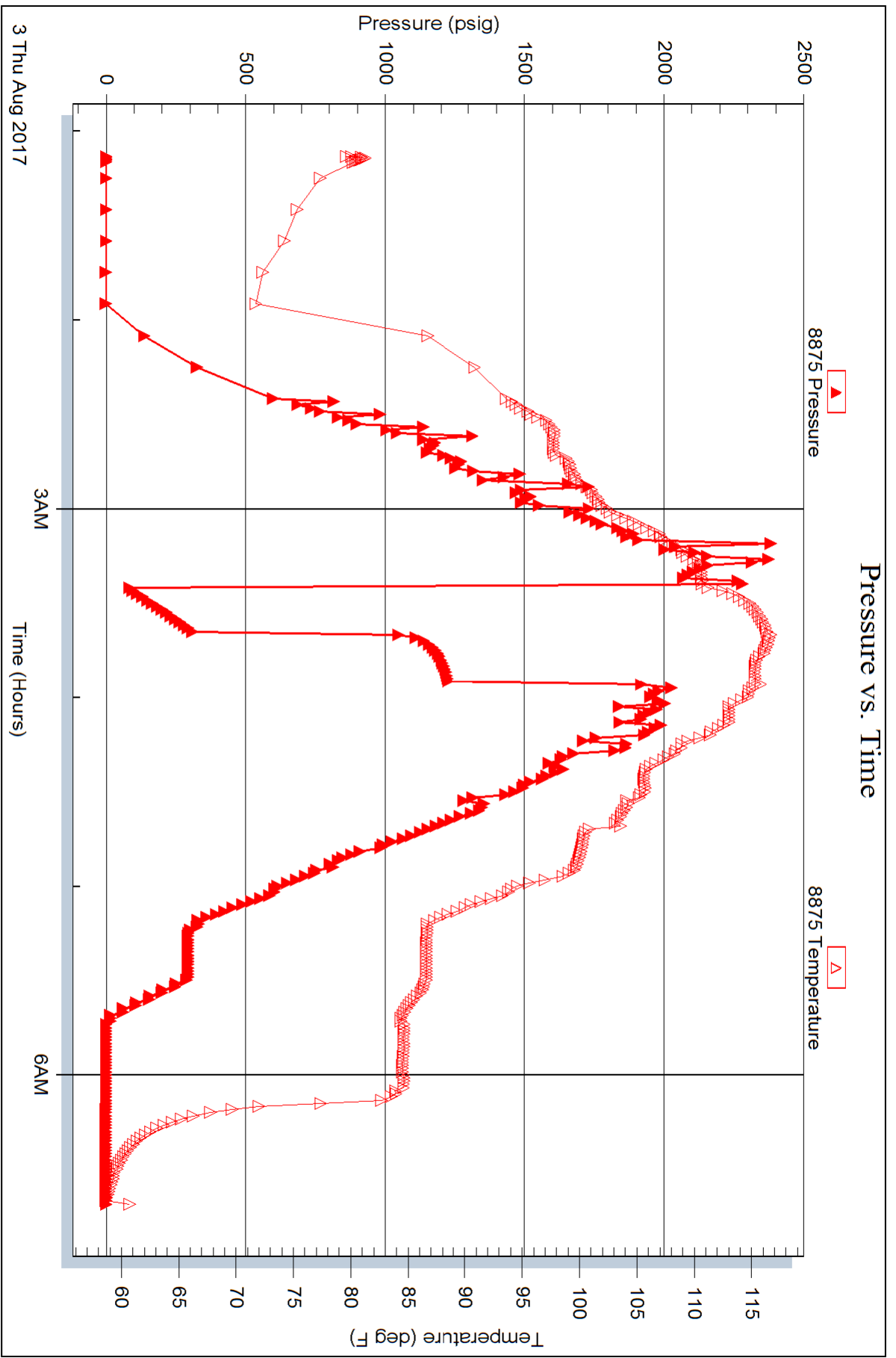
Serial #: 8875

Inside

Concorde Resources Corp

Reta 2-27

DST Test Number: 5



Trilobite Testing, Inc

Ref. No: 63864

Printed: 2017.08.03 @ 07:09:05

