



TRILOBITE TESTING, INC.

DRILL STEM TEST REPORT

American Warrior, Inc.
 PO BOX 399
 Garden City KS 67846
 ATTN: Jason T. Alm

23-19S-22W Ness KS

Gillig-Rein #1

Job Ticket: 62979

DST#: 2

Test Start: 2017.06.21 @ 05:07:00

GENERAL INFORMATION:

Formation: **Mississippi**
 Deviated: No Whipstock: ft (KB)
 Time Tool Opened: 06:53:00
 Time Test Ended: 11:16:00
 Interval: **4328.00 ft (KB) To 4404.00 ft (KB) (TVD)**
 Total Depth: 4404.00 ft (KB) (TVD)
 Hole Diameter: 7.88 inches Hole Condition: Fair
 Test Type: Conventional Bottom Hole (Reset)
 Tester: Spencer J. Staab
 Unit No: 84
 Reference Elevations: 2261.00 ft (KB)
 2253.00 ft (CF)
 KB to GR/CF: 8.00 ft

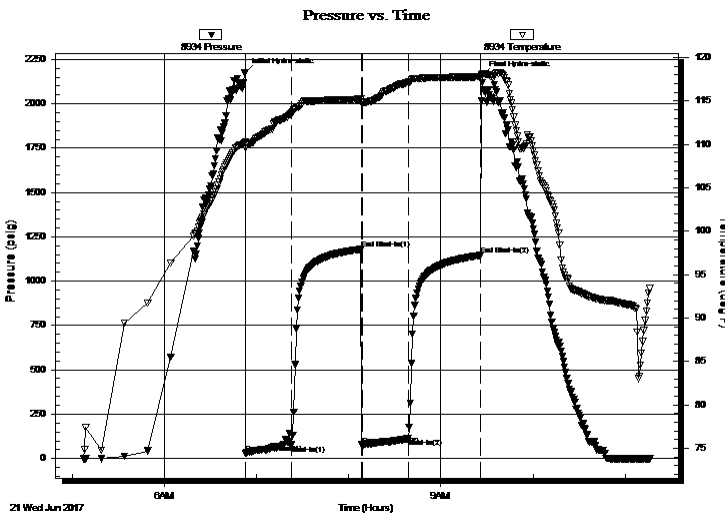
Serial #: 8934

Inside

Press@RunDepth: 113.81 psig @ 4336.00 ft (KB)
 Start Date: 2017.06.21 End Date: 2017.06.21
 Start Time: 05:07:15 End Time: 11:16:00
 Capacity: 8000.00 psig
 Last Calib.: 2017.06.21
 Time On Btm: 2017.06.21 @ 06:52:45
 Time Off Btm: 2017.06.21 @ 09:26:45

TEST COMMENT: 30-IF-Fair Blow ; BOB in 14 mins
 45-ISI-Slight Blow Back
 30-FF-Fair Blow ; BOB in 10 mins
 45-FSI-No Blow Back

PRESSURE SUMMARY



Time (Min.)	Pressure (psig)	Temp (deg F)	Annotation
0	2176.65	110.31	Initial Hydro-static
1	27.86	109.61	Open To Flow (1)
30	76.64	113.60	Shut-In(1)
76	1180.20	115.23	End Shut-In(1)
76	73.74	114.88	Open To Flow (2)
106	113.81	117.16	Shut-In(2)
153	1145.79	117.79	End Shut-In(2)
154	2161.21	118.07	Final Hydro-static

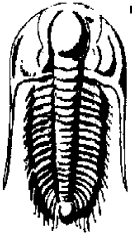
Recovery

Length (ft)	Description	Volume (bbl)
60.00	GWMCO 10%G 10%W 25%M 55%O	0.55
80.00	OCM 10%O 90%M	1.12
20.00	OCM 20%O 80%M	0.28
70.00	Clean Gassy Oil 40%G 60%O	0.98
0.00	315' GIP	0.00

* Recovery from multiple tests

Gas Rates

Choke (inches)	Pressure (psig)	Gas Rate (Mcf/d)



**TRILOBITE
TESTING, INC.**

DRILL STEM TEST REPORT

American Warrior, Inc.
PO BOX 399
Garden City KS 67846
ATTN: Jason T. Alm

23-19S-22W Ness KS

Gillig-Rein #1

Job Ticket: 62979

DST#: 2

Test Start: 2017.06.21 @ 05:07:00

GENERAL INFORMATION:

Formation: **Mississippi**
Deviated: No Whipstock: ft (KB)
Time Tool Opened: 06:53:00
Time Test Ended: 11:16:00
Interval: **4328.00 ft (KB) To 4404.00 ft (KB) (TVD)**
Total Depth: 4404.00 ft (KB) (TVD)
Hole Diameter: 7.88 inches Hole Condition: Fair
Test Type: Conventional Bottom Hole (Reset)
Tester: Spencer J. Staab
Unit No: 84
Reference Elevations: 2261.00 ft (KB)
2253.00 ft (CF)
KB to GR/CF: 8.00 ft

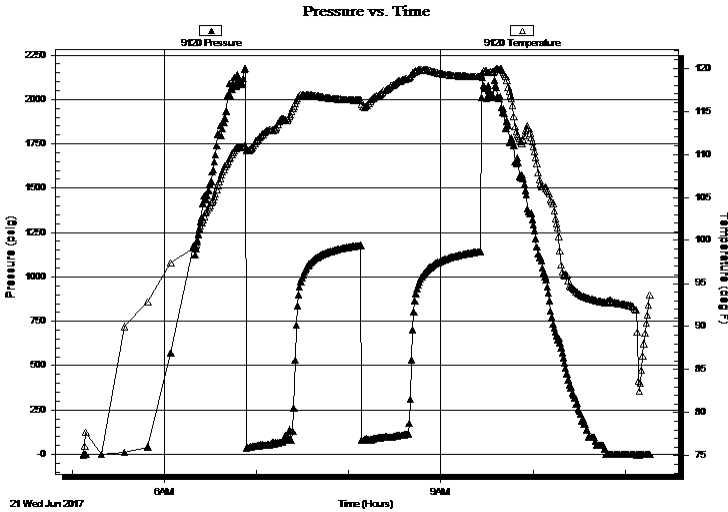
Serial #: 9120

Inside

Press@RunDepth: psig @ 4336.00 ft (KB) Capacity: 8000.00 psig
Start Date: 2017.06.21 End Date: 2017.06.21 Last Calib.: 2017.06.21
Start Time: 05:07:15 End Time: 11:16:00 Time On Btm:
Time Off Btm:

TEST COMMENT: 30-IF-Fair Blow ; BOB in 14 mins
45-ISI-Slight Blow Back
30-FF-Fair Blow ; BOB in 10 mins
45-FSI-No Blow Back

PRESSURE SUMMARY



Time (Min.)	Pressure (psig)	Temp (deg F)	Annotation

Recovery

Length (ft)	Description	Volume (bbl)
60.00	GWMCO 10%G 10%W 25%M 55%O	0.55
80.00	OCM 10%O 90%M	1.12
20.00	OCM 20%O 80%M	0.28
70.00	Clean Gassy Oil 40%G 60%O	0.98
0.00	315' GIP	0.00

Gas Rates

	Choke (inches)	Pressure (psig)	Gas Rate (Mcf/d)

* Recovery from multiple tests



**TRILOBITE
TESTING, INC.**

DRILL STEM TEST REPORT

FLUID SUMMARY

American Warrior, Inc.

23-19S-22W Ness KS

PO BOX 399
Garden City KS 67846

Gillig-Rein #1

Job Ticket: 62979

DST#: 2

ATTN: Jason T. Alm

Test Start: 2017.06.21 @ 05:07:00

Mud and Cushion Information

Mud Type: Gel Chem

Cushion Type:

Oil API:

46 deg API

Mud Weight: 9.00 lb/gal

Cushion Length:

ft

Water Salinity:

ppm

Viscosity: 52.00 sec/qt

Cushion Volume:

bbbl

Water Loss: 7.99 in³

Gas Cushion Type:

Resistivity: ohm.m

Gas Cushion Pressure:

psig

Salinity: 6100.00 ppm

Filter Cake: inches

Recovery Information

Recovery Table

Length ft	Description	Volume bbbl
60.00	GWMCO 10%G 10%W 25%M 55%O	0.550
80.00	OCM 10%O 90%M	1.122
20.00	OCM 20%O 80%M	0.281
70.00	Clean Gassy Oil 40%G 60%O	0.982
0.00	315' GIP	0.000

Total Length: 230.00 ft

Total Volume: 2.935 bbl

Num Fluid Samples: 0

Num Gas Bombs: 0

Serial #:

Laboratory Name:

Laboratory Location:

Recovery Comments: 1#LCM

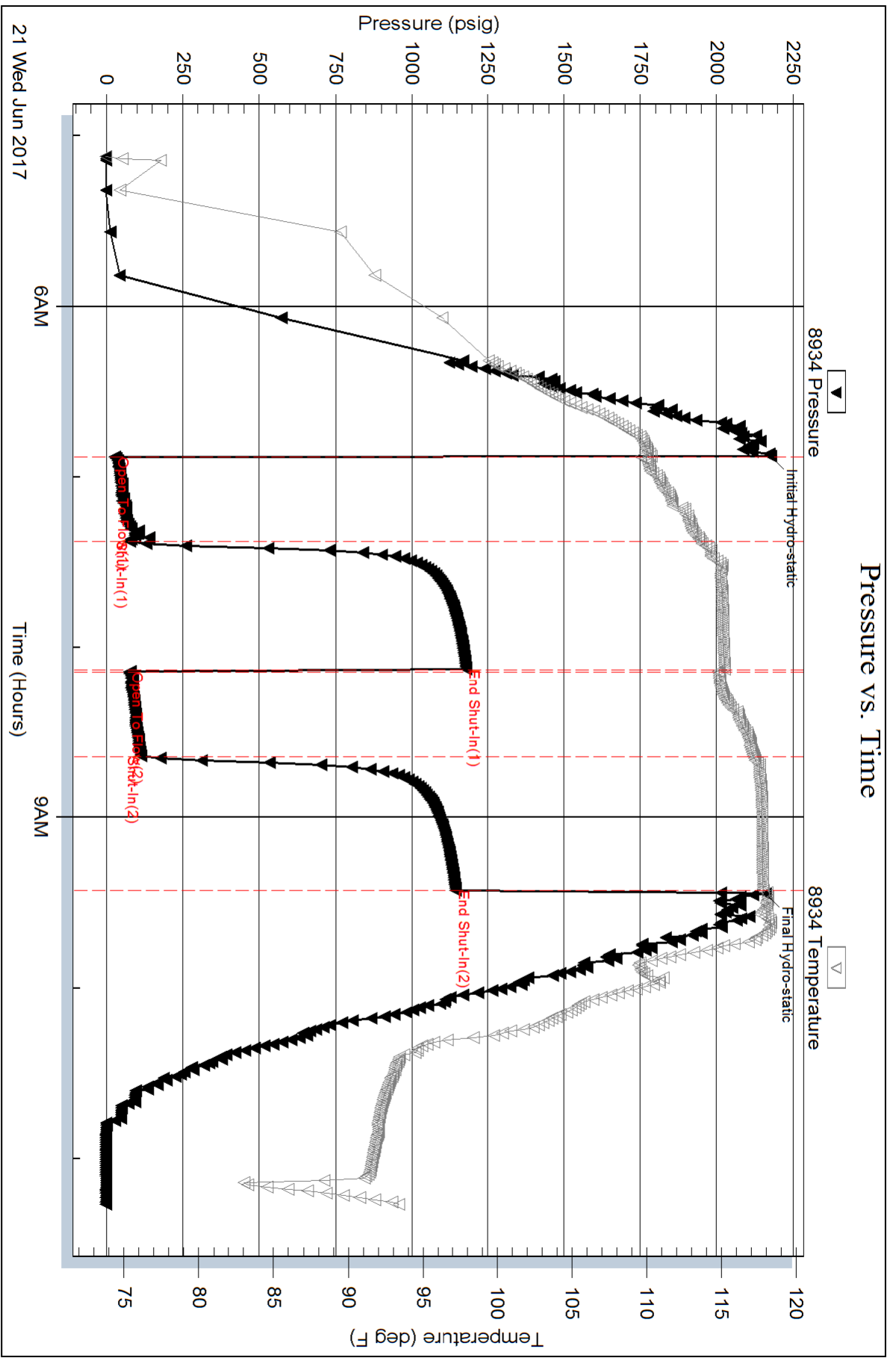
Serial #: 8934

Inside

American Warrior, Inc.

Gilg-Rein #1

DST Test Number: 2



Serial #: 9120

Inside

American Warrior, Inc.

Giliga-Rein #1

DST Test Number: 2

