



DRILL STEM TEST REPORT

Prepared For: **American Warrior Inc**

PO Box 399
Garden City, KS 67846

ATTN: Jason Alm

LN #2-18

18-19S-21W Ness,KS

Start Date: 2017.09.11 @ 15:18:00

End Date: 2017.09.11 @ 20:28:17

Job Ticket #: 62638 DST #: 1

Trilobite Testing, Inc

PO Box 362 Hays, KS 67601

ph: 785-625-4778 fax: 785-625-5620

Printed: 2017.09.13 @ 13:49:55

American Warrior Inc
18-19S-21W Ness,KS
LN #2-18
DST # 1
Cherokee A Sand
2017.09.11



TRILOBITE TESTING, INC.

DRILL STEM TEST REPORT

American Warrior Inc
 PO Box 399
 Garden City, KS 67846
 ATTN: Jason Alm

18-19S-21W Ness,KS
LN #2-18
 Job Ticket: 62638 **DST#: 1**
 Test Start: 2017.09.11 @ 15:18:00

GENERAL INFORMATION:

Formation: **Cherokee A Sand**
 Deviated: No Whipstock: ft (KB)
 Time Tool Opened: 17:17:17
 Time Test Ended: 20:28:17
 Interval: **4285.00 ft (KB) To 4310.00 ft (KB) (TVD)**
 Total Depth: 4310.00 ft (KB) (TVD)
 Hole Diameter: 7.88 inches Hole Condition: Fair
 Test Type: Conventional Bottom Hole (Initial)
 Tester: Ken Swinney
 Unit No: 72
 Reference Elevations: 2271.00 ft (KB)
 2263.00 ft (CF)
 KB to GR/CF: 8.00 ft

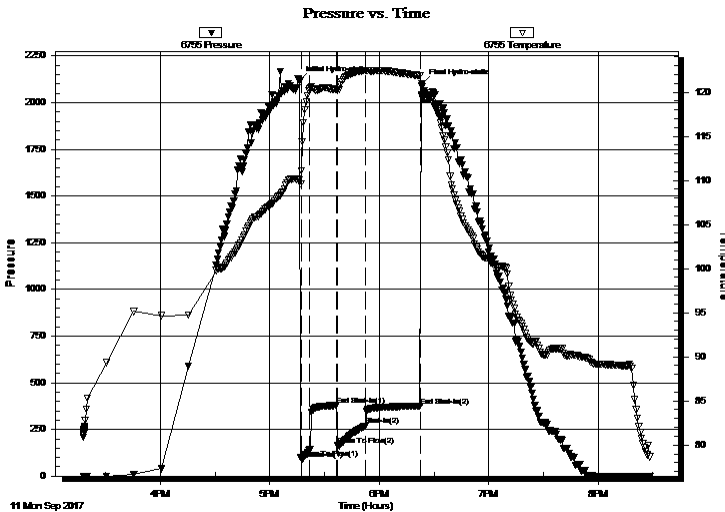
Serial #: 6755

Inside

Press@RunDepth: 269.86 psig @ 4286.00 ft (KB) Capacity: psig
 Start Date: 2017.09.11 End Date: 2017.09.11 Last Calib.: 2017.09.11
 Start Time: 15:18:01 End Time: 20:28:17 Time On Btm: 2017.09.11 @ 17:16:32
 Time Off Btm: 2017.09.11 @ 18:23:32

TEST COMMENT: IFP 5 Minutes BOB in 4 1/2 minutes
 ISI 15 Minutes No blow back
 FFP 15 Minutes Blow built to 6" then died to 3"
 FSI 30 Minutes/ No blow back

PRESSURE SUMMARY



Time (Min.)	Pressure (psig)	Temp (deg F)	Annotation
0	2116.83	110.05	Initial Hydro-static
1	94.29	111.05	Open To Flow (1)
6	140.86	120.39	Shut-In(1)
21	378.01	120.24	End Shut-In(1)
21	165.54	120.14	Open To Flow (2)
36	269.86	122.46	Shut-In(2)
66	375.36	121.83	End Shut-In(2)
67	2100.00	119.45	Final Hydro-static

Recovery

Length (ft)	Description	Volume (bbl)
372.00	MW Mud 10% Water 90%	4.94
186.00	VSOCM Oil 3% Mud 40% Water 57%	2.61
0.00	62' GIP	0.00

Gas Rates

	Choke (inches)	Pressure (psig)	Gas Rate (Mcf/d)



TRILOBITE TESTING, INC.

DRILL STEM TEST REPORT

American Warrior Inc
 PO Box 399
 Garden City, KS 67846
 ATTN: Jason Alm

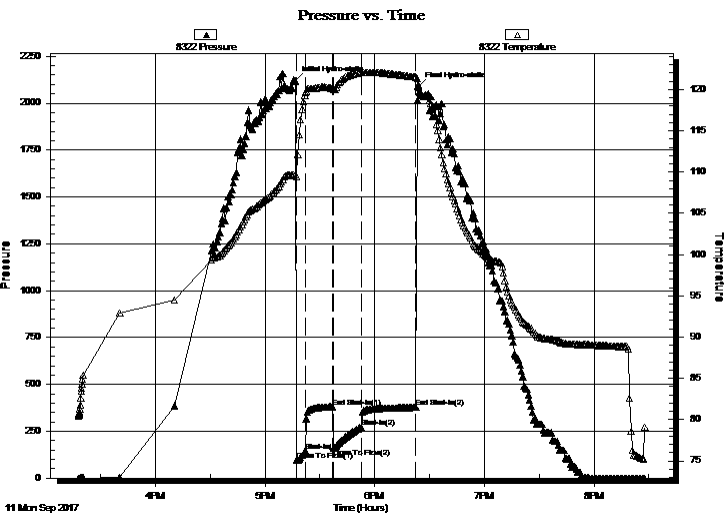
18-19S-21W Ness,KS
LN #2-18
 Job Ticket: 62638 **DST#: 1**
 Test Start: 2017.09.11 @ 15:18:00

GENERAL INFORMATION:

Formation: **Cherokee A Sand**
 Deviated: No Whipstock: ft (KB)
 Time Tool Opened: 17:17:17
 Time Test Ended: 20:28:17
 Interval: **4285.00 ft (KB) To 4310.00 ft (KB) (TVD)**
 Total Depth: 4310.00 ft (KB) (TVD)
 Hole Diameter: 7.88 inches Hole Condition: Fair
 Test Type: Conventional Bottom Hole (Initial)
 Tester: Ken Swinney
 Unit No: 72
 Reference Elevations: 2271.00 ft (KB)
 2263.00 ft (CF)
 KB to GR/CF: 8.00 ft

Serial #: 8322 Outside
 Press@RunDepth: 377.47 psig @ 4287.00 ft (KB) Capacity: psig
 Start Date: 2017.09.11 End Date: 2017.09.11 Last Calib.: 2017.09.11
 Start Time: 15:18:01 End Time: 20:28:17 Time On Btm: 2017.09.11 @ 17:16:32
 Time Off Btm: 2017.09.11 @ 18:23:47

TEST COMMENT: IFP 5 Minutes BOB in 4 1/2 minutes
 ISI 15 Minutes No blow back
 FFP 15 Mintues Blow built to 6" then died to 3"
 FSI 30 Mintues/ No blow back



PRESSURE SUMMARY

Time (Min.)	Pressure (psig)	Temp (deg F)	Annotation
0	2118.21	109.73	Initial Hydro-static
1	95.77	109.48	Open To Flow (1)
6	145.27	119.58	Shut-In(1)
21	380.30	120.11	End Shut-In(1)
21	159.27	120.05	Open To Flow (2)
36	272.10	122.03	Shut-In(2)
66	377.47	121.49	End Shut-In(2)
68	2087.58	120.51	Final Hydro-static

Recovery

Length (ft)	Description	Volume (bbl)
372.00	MW Mud 10% Water 90%	4.94
186.00	VSOCM Oil 3% Mud 40% Water 57%	2.61
0.00	62' GIP	0.00

Gas Rates

	Choke (inches)	Pressure (psig)	Gas Rate (Mcf/d)



**TRILOBITE
TESTING, INC.**

DRILL STEM TEST REPORT

TOOL DIAGRAM

American Warrior Inc
PO Box 399
Garden City, KS 67846
ATTN: Jason Alm

18-19S-21W Ness,KS
LN #2-18
Job Ticket: 62638 **DST#: 1**
Test Start: 2017.09.11 @ 15:18:00

Tool Information

Drill Pipe:	Length: 4248.00 ft	Diameter: 3.80 inches	Volume: 59.59 bbl	Tool Weight: 2000.00 lb
Heavy Wt. Pipe:	Length: 0.00 ft	Diameter: 0.00 inches	Volume: 0.00 bbl	Weight set on Packer: 20000.00 lb
Drill Collar:	Length: 30.00 ft	Diameter: 2.25 inches	Volume: 0.15 bbl	Weight to Pull Loose: 68000.00 lb
			<u>Total Volume: 59.74 bbl</u>	Tool Chased 0.00 ft
Drill Pipe Above KB:	20.00 ft			String Weight: Initial 62000.00 lb
Depth to Top Packer:	4285.00 ft			Final 64000.00 lb
Depth to Bottom Packer:	ft			
Interval between Packers:	25.00 ft			
Tool Length:	52.00 ft			
Number of Packers:	2	Diameter: 6.75 inches		

Tool Comments:

Tool Description	Length (ft)	Serial No.	Position	Depth (ft)	Accum. Lengths
-------------------------	--------------------	-------------------	-----------------	-------------------	-----------------------

Shut-In Tool	5.00			4263.00	
Hydraulic tool	5.00			4268.00	
Jars	5.00			4273.00	
Safety Joint	2.00			4275.00	
Top Packer	5.00			4280.00	
Packer	5.00			4285.00	27.00 Bottom Of Top Packer
Recorder	1.00	6755	Inside	4286.00	
Recorder	1.00	8322	Outside	4287.00	
Anchor	20.00			4307.00	
Bullnose	3.00			4310.00	25.00 Anchor Tool
Total Tool Length:	52.00				



**TRILOBITE
TESTING, INC.**

DRILL STEM TEST REPORT

FLUID SUMMARY

American Warrior Inc
PO Box 399
Garden City, KS 67846
ATTN: Jason Alm

18-19S-21W Ness,KS
LN #2-18
Job Ticket: 62638 **DST#: 1**
Test Start: 2017.09.11 @ 15:18:00

Mud and Cushion Information

Mud Type: Gel Chem	Cushion Type:	Oil API:	deg API
Mud Weight: 9.00 lb/gal	Cushion Length: ft	Water Salinity:	26000 ppm
Viscosity: 51.00 sec/qt	Cushion Volume: bbl		
Water Loss: 7.59 in ³	Gas Cushion Type:		
Resistivity: ohm.m	Gas Cushion Pressure: psig		
Salinity: 6000.00 ppm			
Filter Cake: 1.00 inches			

Recovery Information

Recovery Table

Length ft	Description	Volume bbl
372.00	MW Mud 10% Water 90%	4.945
186.00	VSOCM Oil 3% Mud 40% Water 57%	2.609
0.00	62' GIP	0.000

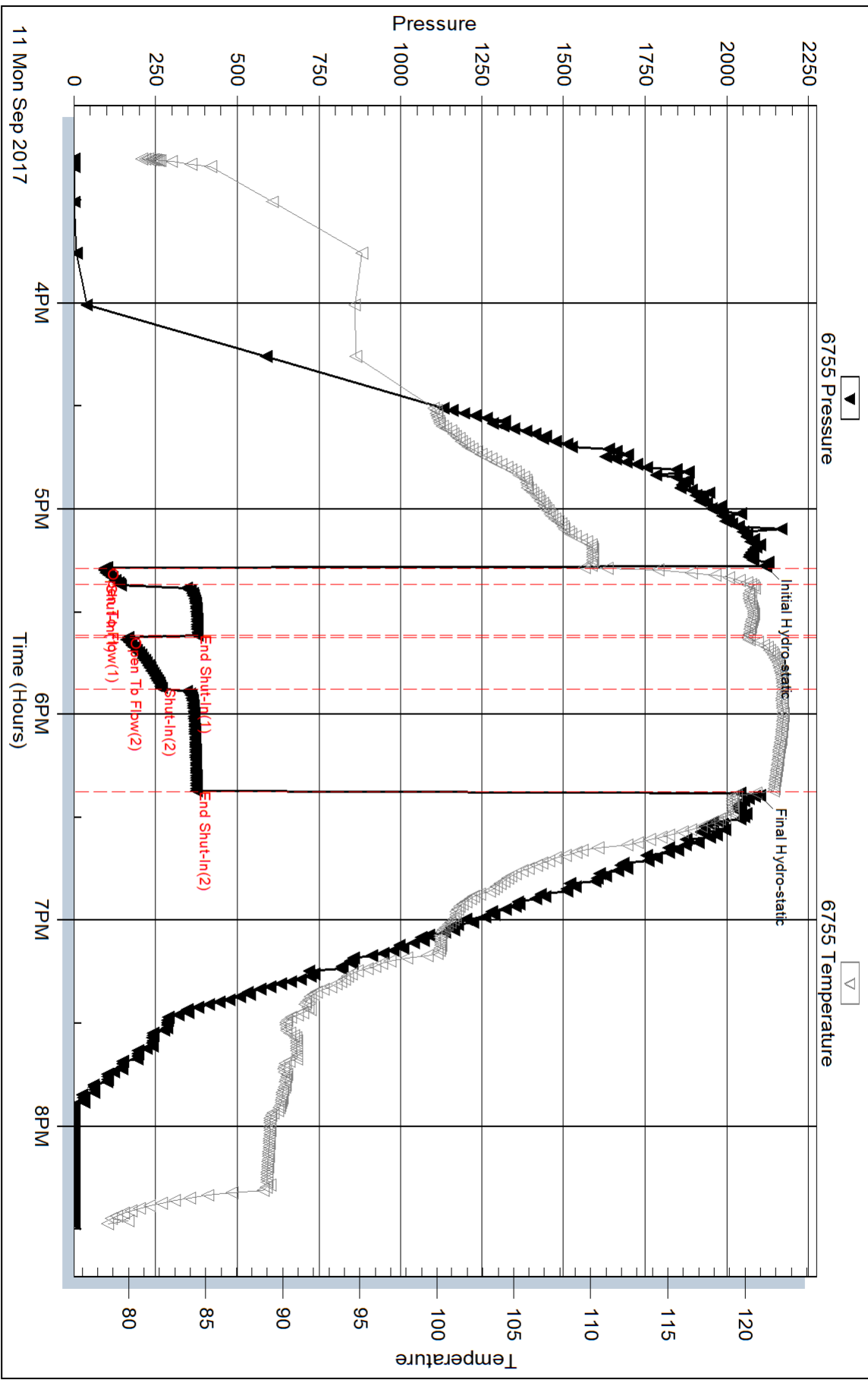
Total Length: 558.00 ft Total Volume: 7.554 bbl

Num Fluid Samples: 0 Num Gas Bombs: 0 Serial #:

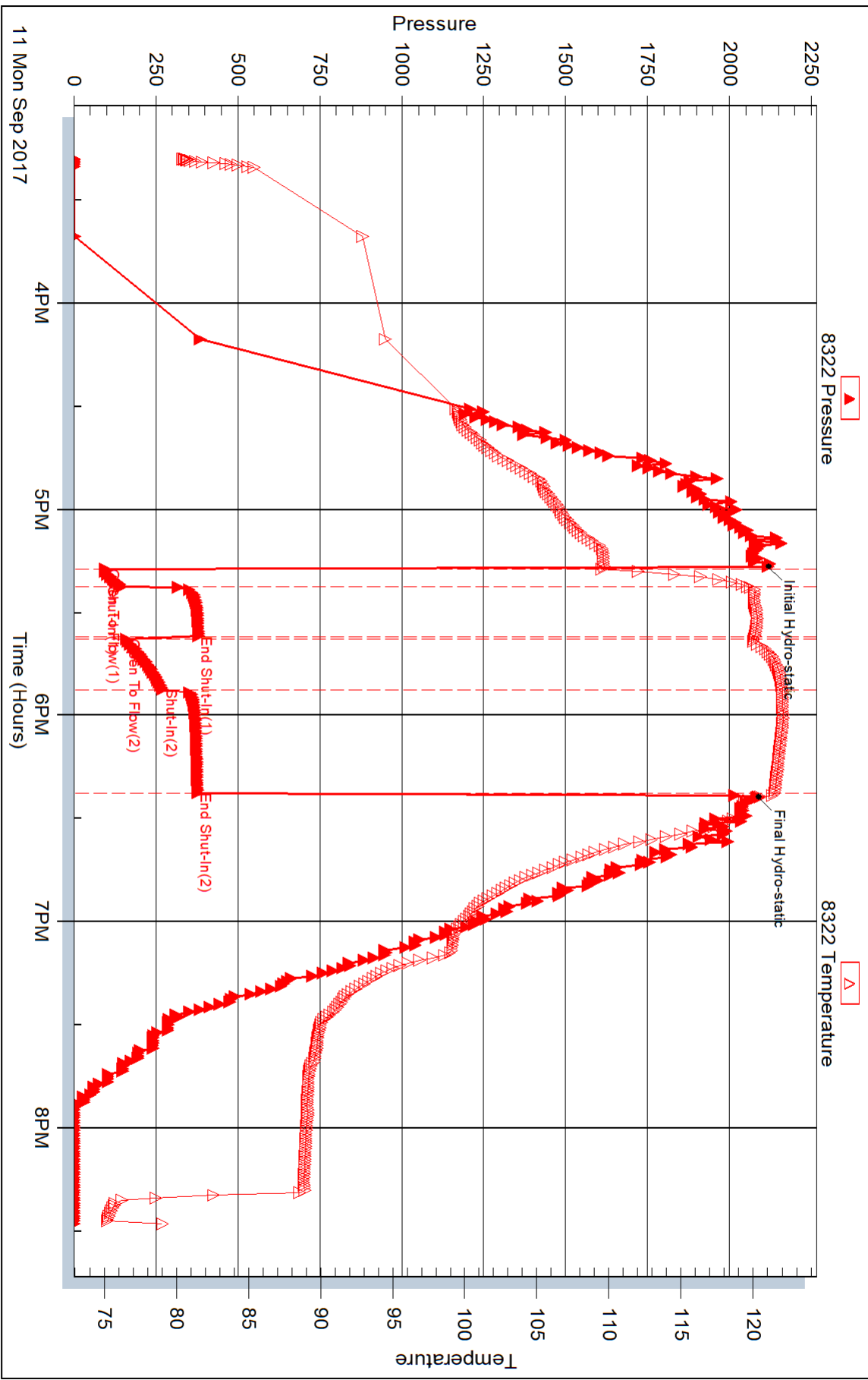
Laboratory Name: Laboratory Location:

Recovery Comments: Recovery Resistivity .230 ohms @ 77 deg.

Pressure vs. Time



Pressure vs. Time





DRILL STEM TEST REPORT

Prepared For: **American Warrior Inc**

PO Box 399
Garden City, KS 67846

ATTN: Jason Alm

LN #2-18

18-19S-21W Ness,KS

Start Date: 2017.09.12 @ 05:12:00

End Date: 2017.09.12 @ 09:40:17

Job Ticket #: 62639 DST #: 2

Trilobite Testing, Inc
PO Box 362 Hays, KS 67601
ph: 785-625-4778 fax: 785-625-5620

Printed: 2017.09.13 @ 13:47:31



TRILOBITE TESTING, INC.

DRILL STEM TEST REPORT

American Warrior Inc
 PO Box 399
 Garden City, KS 67846
 ATTN: Jason Alm

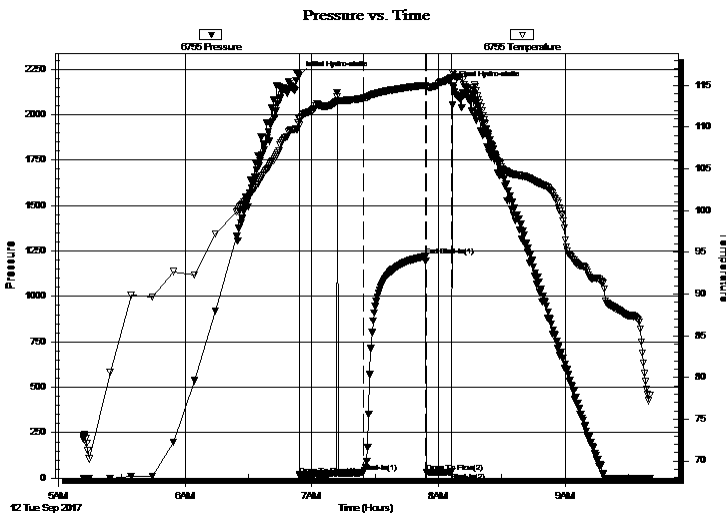
18-19S-21W Ness,KS
LN #2-18
 Job Ticket: 62639 **DST#: 2**
 Test Start: 2017.09.12 @ 05:12:00

GENERAL INFORMATION:

Formation: **Mississippi**
 Deviated: No Whipstock: ft (KB)
 Time Tool Opened: 06:54:17
 Time Test Ended: 09:40:17
 Interval: **4374.00 ft (KB) To 4382.00 ft (KB) (TVD)**
 Total Depth: 4382.00 ft (KB) (TVD)
 Hole Diameter: 7.88 inches Hole Condition: Fair
 Test Type: Conventional Bottom Hole (Initial)
 Tester: Ken Swinney
 Unit No: 72
 Reference Elevations: 2271.00 ft (KB)
 2263.00 ft (CF)
 KB to GR/CF: 8.00 ft

Serial #: 6755 Inside
 Press@RunDepth: 30.66 psig @ 4375.00 ft (KB) Capacity: psig
 Start Date: 2017.09.12 End Date: 2017.09.12 Last Calib.: 2017.09.12
 Start Time: 05:12:01 End Time: 09:40:17 Time On Btm: 2017.09.12 @ 06:54:02
 Time Off Btm: 2017.09.12 @ 08:06:47

TEST COMMENT: IFP 30 Minutes Light surge at open then dead/ Flush tool light surge then dead
 ISI 30 Minutes No blow back
 FF 10 Minutes Dead no blow - Flush tool light surge then dead - Pull test



PRESSURE SUMMARY

Time (Min.)	Pressure (psig)	Temp (deg F)	Annotation
0	2216.21	111.00	Initial Hydro-static
1	16.86	110.20	Open To Flow (1)
31	30.66	113.45	Shut-In(1)
60	1220.69	114.98	End Shut-In(1)
61	32.80	114.75	Open To Flow (2)
72	33.86	115.86	Shut-In(2)
73	2158.15	116.46	Final Hydro-static

Recovery

Length (ft)	Description	Volume (bbl)
45.00	Mud w / thin layer oil in pipe Mud 100%	0.36

Gas Rates

Choke (inches)	Pressure (psig)	Gas Rate (Mcf/d)



**TRILOBITE
TESTING, INC.**

DRILL STEM TEST REPORT

American Warrior Inc
PO Box 399
Garden City, KS 67846
ATTN: Jason Alm

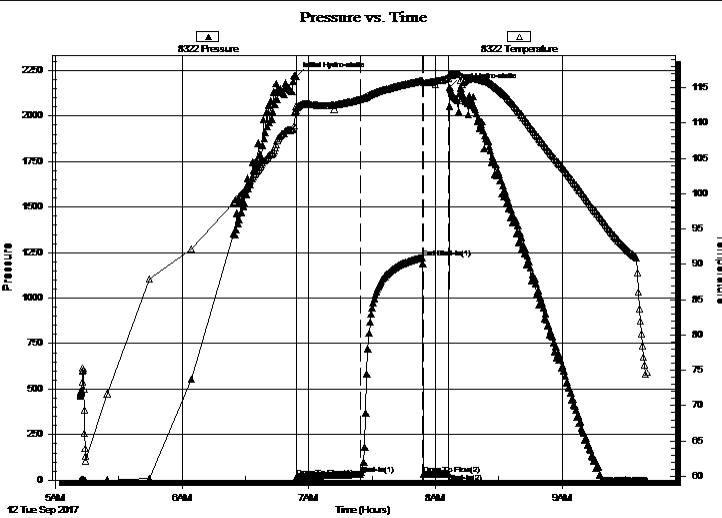
18-19S-21W Ness,KS
LN #2-18
Job Ticket: 62639 **DST#: 2**
Test Start: 2017.09.12 @ 05:12:00

GENERAL INFORMATION:

Formation: **Mississippi**
Deviated: No Whipstock: ft (KB)
Time Tool Opened: 06:54:17
Time Test Ended: 09:40:17
Interval: **4374.00 ft (KB) To 4382.00 ft (KB) (TVD)**
Total Depth: 4382.00 ft (KB) (TVD)
Hole Diameter: 7.88 inches Hole Condition: Fair
Test Type: Conventional Bottom Hole (Initial)
Tester: Ken Swinney
Unit No: 72
Reference Elevations: 2271.00 ft (KB)
2263.00 ft (CF)
KB to GR/CF: 8.00 ft

Serial #: 8322 Outside
Press@RunDepth: 1221.77 psig @ 4376.00 ft (KB) Capacity: psig
Start Date: 2017.09.12 End Date: 2017.09.12 Last Calib.: 2017.09.12
Start Time: 05:12:01 End Time: 09:40:17 Time On Btm: 2017.09.12 @ 06:54:02
Time Off Btm: 2017.09.12 @ 08:06:47

TEST COMMENT: IFP 30 Minutes Light surge at open then dead/ Flush tool light surge then dead
ISI 30 Minutes No blow back
FF 10 Minutes Dead no blow - Flush tool light surge then dead - Pull test



PRESSURE SUMMARY

Time (Min.)	Pressure (psig)	Temp (deg F)	Annotation
0	2217.24	112.38	Initial Hydro-static
1	18.26	111.77	Open To Flow (1)
31	31.96	113.38	Shut-In(1)
60	1221.77	115.95	End Shut-In(1)
61	34.22	115.73	Open To Flow (2)
72	35.20	116.37	Shut-In(2)
73	2156.32	116.80	Final Hydro-static

Recovery

Length (ft)	Description	Volume (bbl)
45.00	Mud w / thin layer oil in pipe Mud 100%	0.36

Gas Rates

Choke (inches)	Pressure (psig)	Gas Rate (Mcf/d)



**TRILOBITE
TESTING, INC.**

DRILL STEM TEST REPORT

TOOL DIAGRAM

American Warrior Inc
PO Box 399
Garden City, KS 67846
ATTN: Jason Alm

18-19S-21W Ness,KS
LN #2-18
Job Ticket: 62639 **DST#: 2**
Test Start: 2017.09.12 @ 05:12:00

Tool Information

Drill Pipe:	Length: 4342.00 ft	Diameter: 3.80 inches	Volume: 60.91 bbl	Tool Weight: 2000.00 lb
Heavy Wt. Pipe:	Length: 0.00 ft	Diameter: 0.00 inches	Volume: 0.00 bbl	Weight set on Packer: 20000.00 lb
Drill Collar:	Length: 30.00 ft	Diameter: 2.25 inches	Volume: 0.15 bbl	Weight to Pull Loose: 66000.00 lb
			<u>Total Volume: 61.06 bbl</u>	Tool Chased 0.00 ft
Drill Pipe Above KB:	25.00 ft			String Weight: Initial 61000.00 lb
Depth to Top Packer:	4374.00 ft			Final 61000.00 lb
Depth to Bottom Packer:	ft			
Interval between Packers:	8.00 ft			
Tool Length:	35.00 ft			
Number of Packers:	2	Diameter: 6.75 inches		

Tool Comments:

Tool Description	Length (ft)	Serial No.	Position	Depth (ft)	Accum. Lengths
-------------------------	--------------------	-------------------	-----------------	-------------------	-----------------------

Shut-In Tool	5.00			4352.00	
Hydraulic tool	5.00			4357.00	
Jars	5.00			4362.00	
Safety Joint	2.00			4364.00	
Top Packer	5.00			4369.00	
Packer	5.00			4374.00	27.00 Bottom Of Top Packer
Recorder	1.00	6755	Inside	4375.00	
Recorder	1.00	8322	Outside	4376.00	
Anchor	3.00			4379.00	
Bullnose	3.00			4382.00	8.00 Anchor Tool
Total Tool Length:	35.00				



**TRILOBITE
TESTING, INC.**

DRILL STEM TEST REPORT

FLUID SUMMARY

American Warrior Inc
PO Box 399
Garden City, KS 67846
ATTN: Jason Alm

18-19S-21W Ness,KS
LN #2-18
Job Ticket: 62639 **DST#: 2**
Test Start: 2017.09.12 @ 05:12:00

Mud and Cushion Information

Mud Type: Gel Chem	Cushion Type:	Oil API:	deg API
Mud Weight: 9.00 lb/gal	Cushion Length: ft	Water Salinity:	ppm
Viscosity: 51.00 sec/qt	Cushion Volume: bbl		
Water Loss: 7.59 in ³	Gas Cushion Type:		
Resistivity: ohm.m	Gas Cushion Pressure: psig		
Salinity: 6000.00 ppm			
Filter Cake: 1.00 inches			

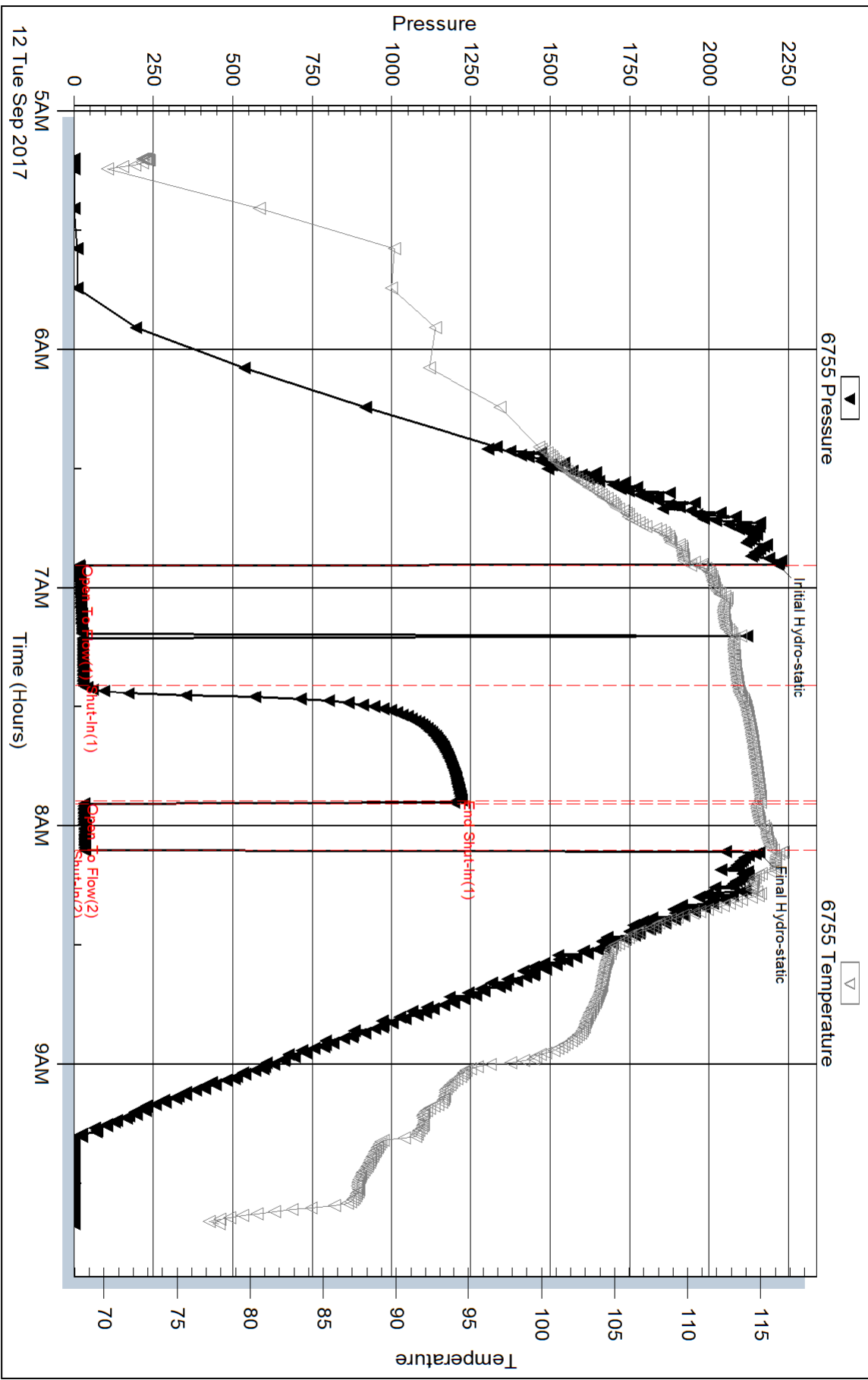
Recovery Information

Recovery Table

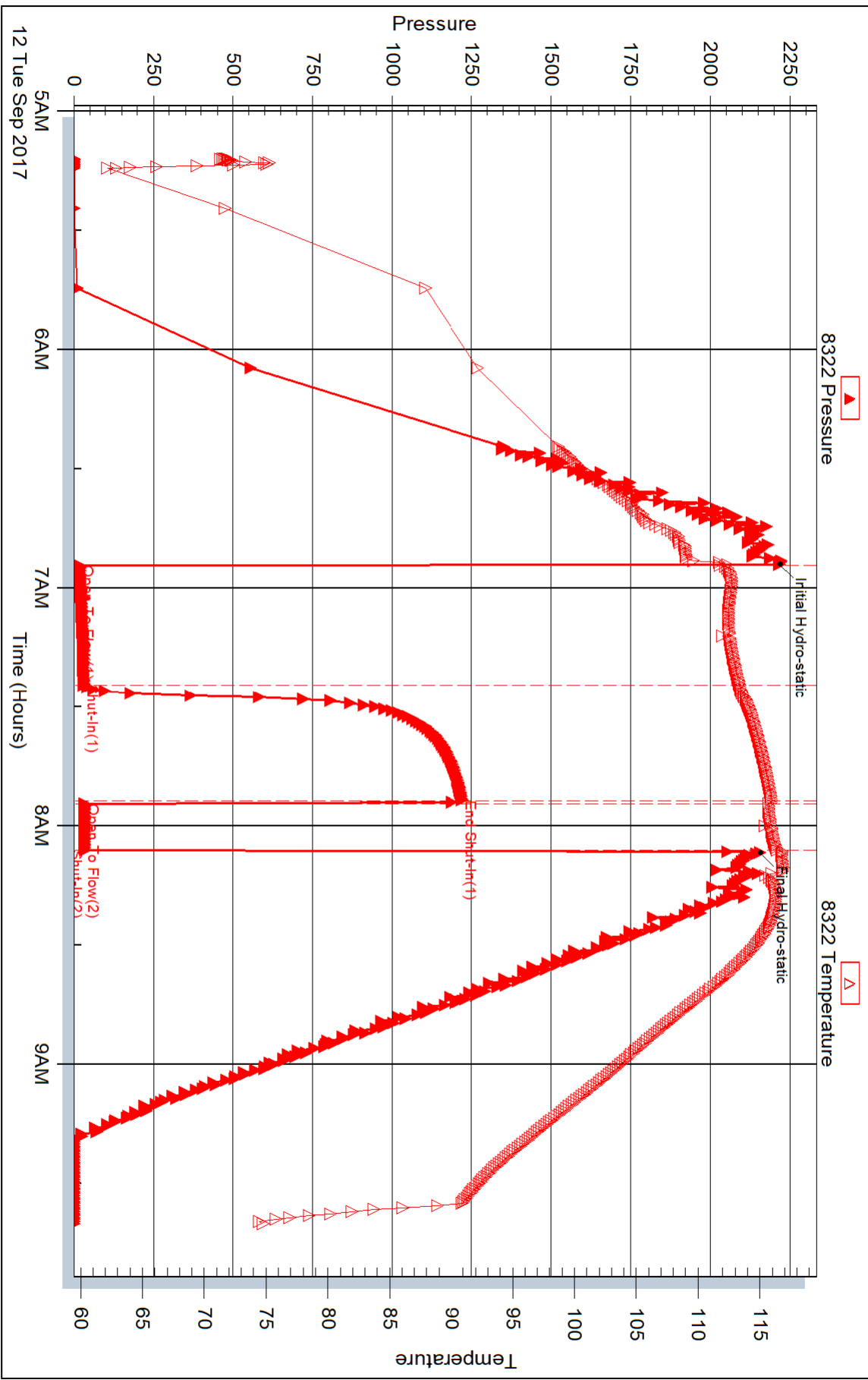
Length ft	Description	Volume bbl
45.00	Mud w / thin layer oil in pipe Mud 100%	0.358

Total Length: 45.00 ft Total Volume: 0.358 bbl
Num Fluid Samples: 0 Num Gas Bombs: 0 Serial #:
Laboratory Name: Laboratory Location:
Recovery Comments:

Pressure vs. Time



Pressure vs. Time





DRILL STEM TEST REPORT

Prepared For: **American Warrior Inc**

PO Box 399
Garden City, KS 67846

ATTN: Jason Alm

LN #2-18

18-19S-21W Ness,KS

Start Date: 2017.09.12 @ 15:12:00

End Date: 2017.09.12 @ 19:52:17

Job Ticket #: 62640 DST #: 3

Trilobite Testing, Inc

PO Box 362 Hays, KS 67601

ph: 785-625-4778 fax: 785-625-5620

Printed: 2017.09.13 @ 13:47:04



TRILOBITE TESTING, INC.

DRILL STEM TEST REPORT

American Warrior Inc
 PO Box 399
 Garden City, KS 67846
 ATTN: Jason Alm

18-19S-21W Ness,KS
LN #2-18
 Job Ticket: 62640 **DST#: 3**
 Test Start: 2017.09.12 @ 15:12:00

GENERAL INFORMATION:

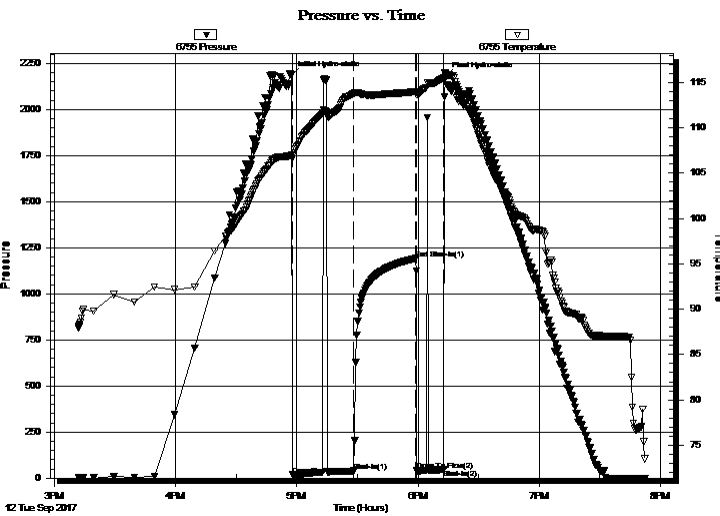
Formation: **Mississippi**
 Deviated: No Whipstock: ft (KB)
 Time Tool Opened: 16:57:47
 Time Test Ended: 19:52:17
 Interval: **4375.00 ft (KB) To 4387.00 ft (KB) (TVD)**
 Total Depth: 4387.00 ft (KB) (TVD)
 Hole Diameter: 7.88 inches Hole Condition: Fair
 Test Type: Conventional Bottom Hole (Initial)
 Tester: Ken Swinney
 Unit No: 72
 Reference Elevations: 2271.00 ft (KB)
 2263.00 ft (CF)
 KB to GR/CF: 8.00 ft

Serial #: 6755

Inside

Press@RunDepth: 39.37 psig @ 4376.00 ft (KB) Capacity: psig
 Start Date: 2017.09.12 End Date: 2017.09.12 Last Calib.: 2017.09.12
 Start Time: 15:12:01 End Time: 19:52:17 Time On Btm: 2017.09.12 @ 16:57:17
 Time Off Btm: 2017.09.12 @ 18:13:32

TEST COMMENT: IFP 30 Minutes Light surge at open then dead - Flush tool no help
 ISI 30 Minutes No blow back
 FFP 10 Minutes Dead no blow - Flush tool light surge then dead - Pull test



PRESSURE SUMMARY

Time (Min.)	Pressure (psig)	Temp (deg F)	Annotation
0	2186.13	106.97	Initial Hydro-static
1	17.66	106.57	Open To Flow (1)
31	39.37	113.75	Shut-In(1)
62	1191.55	113.95	End Shut-In(1)
63	40.31	113.68	Open To Flow (2)
76	47.45	115.53	Shut-In(2)
77	2177.93	116.02	Final Hydro-static

Recovery

Length (ft)	Description	Volume (bbl)
70.00	WCM w/ skim of oil Water 10% Mud 90%	0.71

Gas Rates

Choke (inches)	Pressure (psig)	Gas Rate (Mcf/d)



TRILOBITE TESTING, INC.

DRILL STEM TEST REPORT

American Warrior Inc
 PO Box 399
 Garden City, KS 67846
 ATTN: Jason Alm

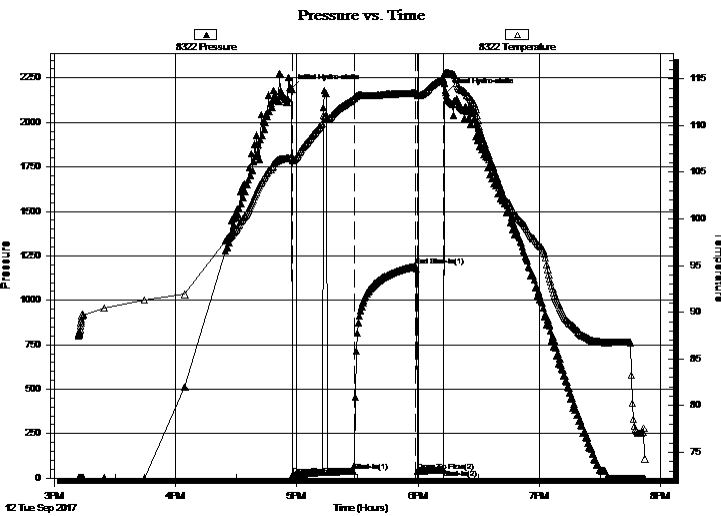
18-19S-21W Ness,KS
LN #2-18
 Job Ticket: 62640 **DST#: 3**
 Test Start: 2017.09.12 @ 15:12:00

GENERAL INFORMATION:

Formation: **Mississippi**
 Deviated: No Whipstock: ft (KB)
 Time Tool Opened: 16:57:47
 Time Test Ended: 19:52:17
 Interval: **4375.00 ft (KB) To 4387.00 ft (KB) (TVD)**
 Total Depth: 4387.00 ft (KB) (TVD)
 Hole Diameter: 7.88 inches Hole Condition: Fair
 Test Type: Conventional Bottom Hole (Initial)
 Tester: Ken Swinney
 Unit No: 72
 Reference Elevations: 2271.00 ft (KB)
 2263.00 ft (CF)
 KB to GR/CF: 8.00 ft

Serial #: 8322 Outside
 Press@RunDepth: 1192.17 psig @ 4377.00 ft (KB) Capacity: psig
 Start Date: 2017.09.12 End Date: 2017.09.12 Last Calib.: 2017.09.12
 Start Time: 15:12:01 End Time: 19:52:17 Time On Btm: 2017.09.12 @ 16:57:32
 Time Off Btm: 2017.09.12 @ 18:13:47

TEST COMMENT: IFP 30 Minutes Light surge at open then dead - Flush tool no help
 ISI 30 Minutes No blow back
 FFP 10 Minutes Dead no blow - Flush tool light surge then dead - Pull test



PRESSURE SUMMARY

Time (Min.)	Pressure (psig)	Temp (deg F)	Annotation
0	2187.43	106.59	Initial Hydro-static
1	18.50	106.22	Open To Flow (1)
31	39.64	112.91	Shut-In(1)
62	1192.17	113.47	End Shut-In(1)
62	41.15	113.24	Open To Flow (2)
75	47.47	114.99	Shut-In(2)
77	2165.67	115.70	Final Hydro-static

Recovery

Length (ft)	Description	Volume (bbl)
70.00	WCM w/ skim of oil Water 10% Mud 90%0.71	

Gas Rates

Choke (inches)	Pressure (psig)	Gas Rate (Mcf/d)



**TRILOBITE
TESTING, INC.**

DRILL STEM TEST REPORT

TOOL DIAGRAM

American Warrior Inc
PO Box 399
Garden City, KS 67846
ATTN: Jason Alm

18-19S-21W Ness,KS
LN #2-18
Job Ticket: 62640 **DST#: 3**
Test Start: 2017.09.12 @ 15:12:00

Tool Information

Drill Pipe:	Length: 4342.00 ft	Diameter: 3.80 inches	Volume: 60.91 bbl	Tool Weight: 2000.00 lb
Heavy Wt. Pipe:	Length: 0.00 ft	Diameter: 0.00 inches	Volume: 0.00 bbl	Weight set on Packer: 20000.00 lb
Drill Collar:	Length: 30.00 ft	Diameter: 2.25 inches	Volume: 0.15 bbl	Weight to Pull Loose: 70000.00 lb
			<u>Total Volume: 61.06 bbl</u>	Tool Chased 0.00 ft
Drill Pipe Above KB:	24.00 ft			String Weight: Initial 62000.00 lb
Depth to Top Packer:	4375.00 ft			Final 62000.00 lb
Depth to Bottom Packer:	ft			
Interval between Packers:	12.00 ft			
Tool Length:	39.00 ft			
Number of Packers:	2	Diameter: 6.75 inches		

Tool Comments:

Tool Description	Length (ft)	Serial No.	Position	Depth (ft)	Accum. Lengths
-------------------------	--------------------	-------------------	-----------------	-------------------	-----------------------

Shut-In Tool	5.00			4353.00	
Hydraulic tool	5.00			4358.00	
Jars	5.00			4363.00	
Safety Joint	2.00			4365.00	
Top Packer	5.00			4370.00	
Packer	5.00			4375.00	27.00 Bottom Of Top Packer
Recorder	1.00	6755	Inside	4376.00	
Recorder	1.00	8322	Outside	4377.00	
Anchor	7.00			4384.00	
Bullnose	3.00			4387.00	12.00 Anchor Tool
Total Tool Length:	39.00				



**TRILOBITE
TESTING, INC.**

DRILL STEM TEST REPORT

FLUID SUMMARY

American Warrior Inc
PO Box 399
Garden City, KS 67846
ATTN: Jason Alm

18-19S-21W Ness,KS
LN #2-18
Job Ticket: 62640 **DST#: 3**
Test Start: 2017.09.12 @ 15:12:00

Mud and Cushion Information

Mud Type: Gel Chem	Cushion Type:	Oil API:	deg API
Mud Weight: 9.00 lb/gal	Cushion Length: ft	Water Salinity:	21000 ppm
Viscosity: 56.00 sec/qt	Cushion Volume: bbl		
Water Loss: 8.79 in ³	Gas Cushion Type:		
Resistivity: ohm.m	Gas Cushion Pressure: psig		
Salinity: 6200.00 ppm			
Filter Cake: 1.00 inches			

Recovery Information

Recovery Table

Length ft	Description	Volume bbl
70.00	WCM w / skim of oil Water 10% Mud 90%	0.709

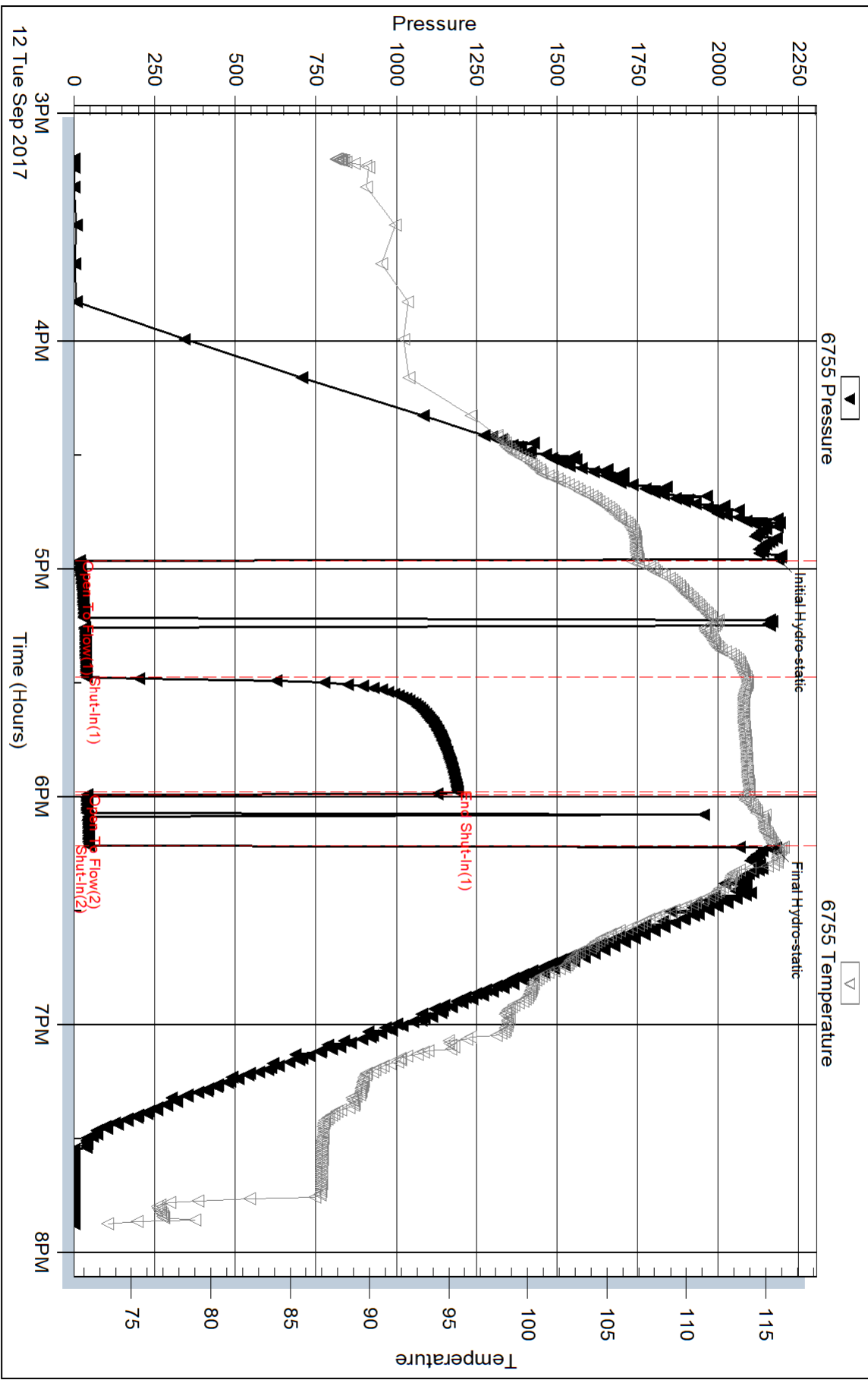
Total Length: 70.00 ft Total Volume: 0.709 bbl

Num Fluid Samples: 0 Num Gas Bombs: 0 Serial #:

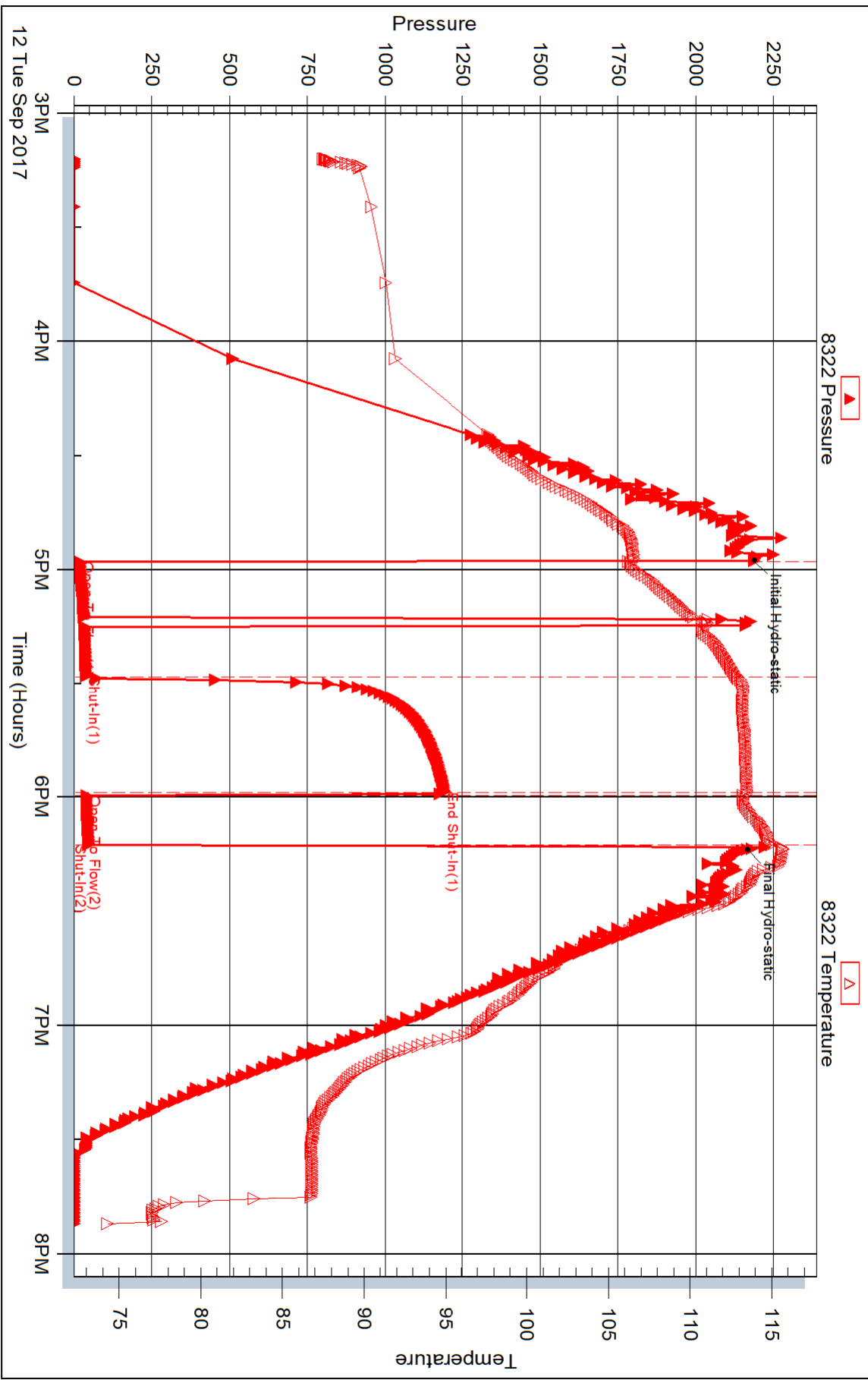
Laboratory Name: Laboratory Location:

Recovery Comments: Recovery resistivity .335 ohms @ 75 deg.

Pressure vs. Time



Pressure vs. Time





DRILL STEM TEST REPORT

Prepared For: **American Warrior Inc**

PO Box 399
Garden City, KS 67846

ATTN: Jason Alm

LN #2-18

18-19S-21W Ness,KS

Start Date: 2017.09.13 @ 01:24:00

End Date: 2017.09.13 @ 06:10:17

Job Ticket #: 62641 DST #: 4

Trilobite Testing, Inc
PO Box 362 Hays, KS 67601
ph: 785-625-4778 fax: 785-625-5620

Printed: 2017.09.13 @ 13:46:03



**TRILOBITE
TESTING, INC.**

DRILL STEM TEST REPORT

American Warrior Inc
 PO Box 399
 Garden City, KS 67846
 ATTN: Jason Alm

18-19S-21W Ness,KS
LN #2-18
 Job Ticket: 62641 **DST#: 4**
 Test Start: 2017.09.13 @ 01:24:00

GENERAL INFORMATION:

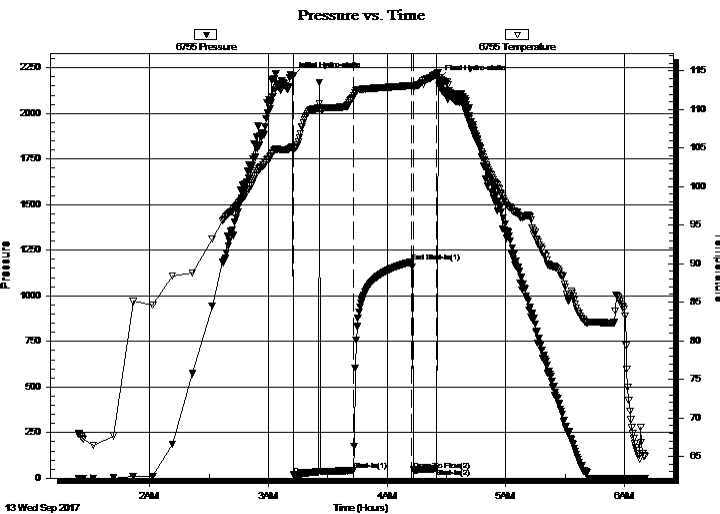
Formation: **Mississippi**
 Deviated: No Whipstock: ft (KB)
 Time Tool Opened: 03:12:47
 Time Test Ended: 06:10:17
 Interval: **4376.00 ft (KB) To 4392.00 ft (KB) (TVD)**
 Total Depth: 4392.00 ft (KB) (TVD)
 Hole Diameter: 7.88 inches Hole Condition: Fair
 Test Type: Conventional Bottom Hole (Initial)
 Tester: Ken Swinney
 Unit No: 72
 Reference Elevations: 2271.00 ft (KB)
 2263.00 ft (CF)
 KB to GR/CF: 8.00 ft

Serial #: 6755

Inside

Press@RunDepth: 43.83 psig @ 4388.00 ft (KB) Capacity: psig
 Start Date: 2017.09.13 End Date: 2017.09.13 Last Calib.: 2017.09.13
 Start Time: 01:24:01 End Time: 06:10:17 Time On Btm: 2017.09.13 @ 03:12:17
 Time Off Btm: 2017.09.13 @ 04:25:47

TEST COMMENT: IFP 30 minutes Light surface blow for 3 min then dead - Flush tool - light surge then dead
 ISI 30 minutes No blow back
 FFP 15 minutes Light surge at open then dead - Flush tool light surge then dead - Pull test



PRESSURE SUMMARY

Time (Min.)	Pressure (psig)	Temp (deg F)	Annotation
0	2203.37	105.18	Initial Hydro-static
1	17.46	104.87	Open To Flow (1)
31	43.83	111.55	Shut-In(1)
61	1185.69	113.08	End Shut-In(1)
61	45.37	112.96	Open To Flow (2)
73	53.34	114.58	Shut-In(2)
74	2183.72	114.81	Final Hydro-static

Recovery

Length (ft)	Description	Volume (bbl)
75.00	WM w/show of oil Water 30% Mud 70%	0.78

Gas Rates

Choke (inches)	Pressure (psig)	Gas Rate (Mcf/d)



**TRILOBITE
TESTING, INC.**

DRILL STEM TEST REPORT

American Warrior Inc
PO Box 399
Garden City, KS 67846
ATTN: Jason Alm

18-19S-21W Ness,KS
LN #2-18
Job Ticket: 62641 **DST#: 4**
Test Start: 2017.09.13 @ 01:24:00

GENERAL INFORMATION:

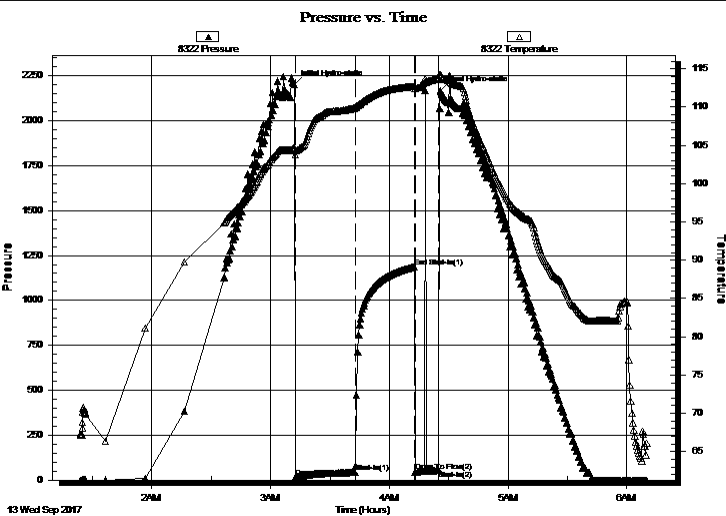
Formation: **Mississippi**
Deviated: No Whipstock: ft (KB)
Time Tool Opened: 03:12:47
Time Test Ended: 06:10:17
Interval: **4376.00 ft (KB) To 4392.00 ft (KB) (TVD)**
Total Depth: 4392.00 ft (KB) (TVD)
Hole Diameter: 7.88 inches Hole Condition: Fair
Reference Elevations: 2271.00 ft (KB)
2263.00 ft (CF)
KB to GR/CF: 8.00 ft
Test Type: Conventional Bottom Hole (Initial)
Tester: Ken Swinney
Unit No: 72

Serial #: 8322

Outside

Press@RunDepth: 1186.85 psig @ 4389.00 ft (KB) Capacity: psig
Start Date: 2017.09.13 End Date: 2017.09.13 Last Calib.: 2017.09.13
Start Time: 01:24:01 End Time: 06:10:17 Time On Btm: 2017.09.13 @ 03:12:02
Time Off Btm: 2017.09.13 @ 04:25:47

TEST COMMENT: IFP 30 minutes Light surface blow for 3 min then dead - Flush tool - light surge then dead
ISI 30 minutes No blow back
FFP 15 minutes Light surge at open then dead - Flush tool light surge then dead - Pull test



PRESSURE SUMMARY

Time (Min.)	Pressure (psig)	Temp (deg F)	Annotation
0	2202.63	104.66	Initial Hydro-static
1	18.25	103.78	Open To Flow (1)
31	44.93	109.95	Shut-In(1)
61	1186.85	112.67	End Shut-In(1)
62	46.86	112.49	Open To Flow (2)
73	54.56	113.78	Shut-In(2)
74	2169.26	114.26	Final Hydro-static

Recovery

Length (ft)	Description	Volume (bbl)
75.00	WM w/show of oil Water 30% Mud 70%	0.78

Gas Rates

	Choke (inches)	Pressure (psig)	Gas Rate (Mcf/d)



**TRILOBITE
TESTING, INC.**

DRILL STEM TEST REPORT

TOOL DIAGRAM

American Warrior Inc
PO Box 399
Garden City, KS 67846
ATTN: Jason Alm

18-19S-21W Ness,KS
LN #2-18
Job Ticket: 62641 **DST#: 4**
Test Start: 2017.09.13 @ 01:24:00

Tool Information

Drill Pipe:	Length: 4342.00 ft	Diameter: 3.80 inches	Volume: 60.91 bbl	Tool Weight: 2000.00 lb
Heavy Wt. Pipe:	Length: 0.00 ft	Diameter: 0.00 inches	Volume: 0.00 bbl	Weight set on Packer: 20000.00 lb
Drill Collar:	Length: 30.00 ft	Diameter: 2.25 inches	Volume: 0.15 bbl	Weight to Pull Loose: 65000.00 lb
		Total Volume: 61.06 bbl		Tool Chased 0.00 ft
Drill Pipe Above KB:	23.00 ft			String Weight: Initial 61000.00 lb
Depth to Top Packer:	4376.00 ft			Final 61000.00 lb
Depth to Bottom Packer:	ft			
Interval between Packers:	16.00 ft			
Tool Length:	43.00 ft			
Number of Packers:	2	Diameter: 6.75 inches		

Tool Comments:

Tool Description	Length (ft)	Serial No.	Position	Depth (ft)	Accum. Lengths
-------------------------	--------------------	-------------------	-----------------	-------------------	-----------------------

Shut-In Tool	5.00			4354.00	
Hydraulic tool	5.00			4359.00	
Jars	5.00			4364.00	
Safety Joint	2.00			4366.00	
Top Packer	5.00			4371.00	
Packer	5.00			4376.00	27.00 Bottom Of Top Packer
Anchor	11.00			4387.00	
Recorder	1.00	6755	Inside	4388.00	
Recorder	1.00	8322	Outside	4389.00	
Bullnose	3.00			4392.00	16.00 Anchor Tool
Total Tool Length:	43.00				



**TRILOBITE
TESTING, INC.**

DRILL STEM TEST REPORT

FLUID SUMMARY

American Warrior Inc
PO Box 399
Garden City, KS 67846
ATTN: Jason Alm

18-19S-21W Ness,KS
LN #2-18
Job Ticket: 62641 **DST#: 4**
Test Start: 2017.09.13 @ 01:24:00

Mud and Cushion Information

Mud Type: Gel Chem	Cushion Type:	Oil API:	deg API
Mud Weight: 9.00 lb/gal	Cushion Length: ft	Water Salinity:	22000 ppm
Viscosity: 56.00 sec/qt	Cushion Volume: bbl		
Water Loss: 8.79 in ³	Gas Cushion Type:		
Resistivity: ohm.m	Gas Cushion Pressure: psig		
Salinity: 6200.00 ppm			
Filter Cake: 1.00 inches			

Recovery Information

Recovery Table

Length ft	Description	Volume bbl
75.00	WM w/show of oil Water 30% Mud 70%	0.779

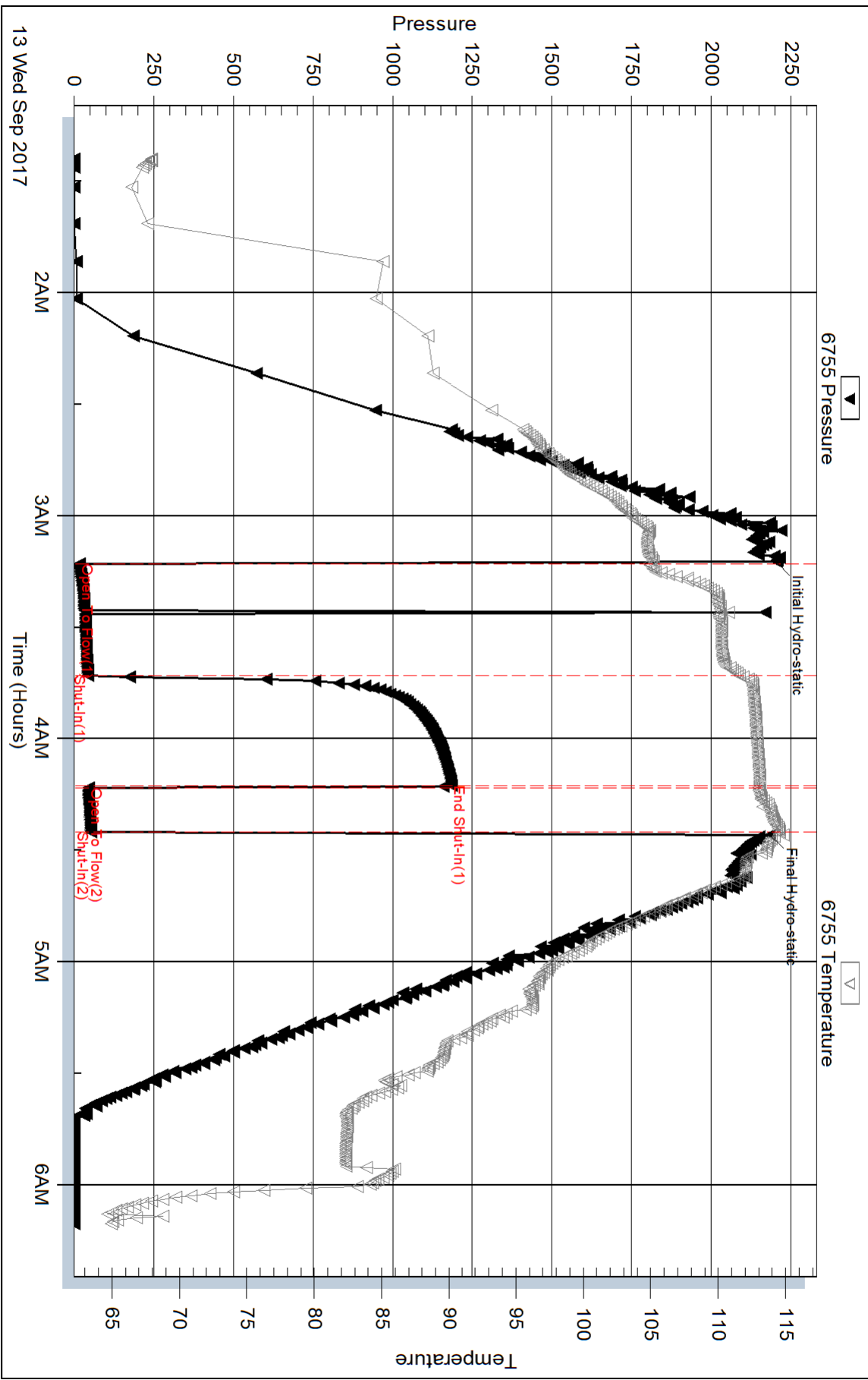
Total Length: 75.00 ft Total Volume: 0.779 bbl

Num Fluid Samples: 0 Num Gas Bombs: 0 Serial #:

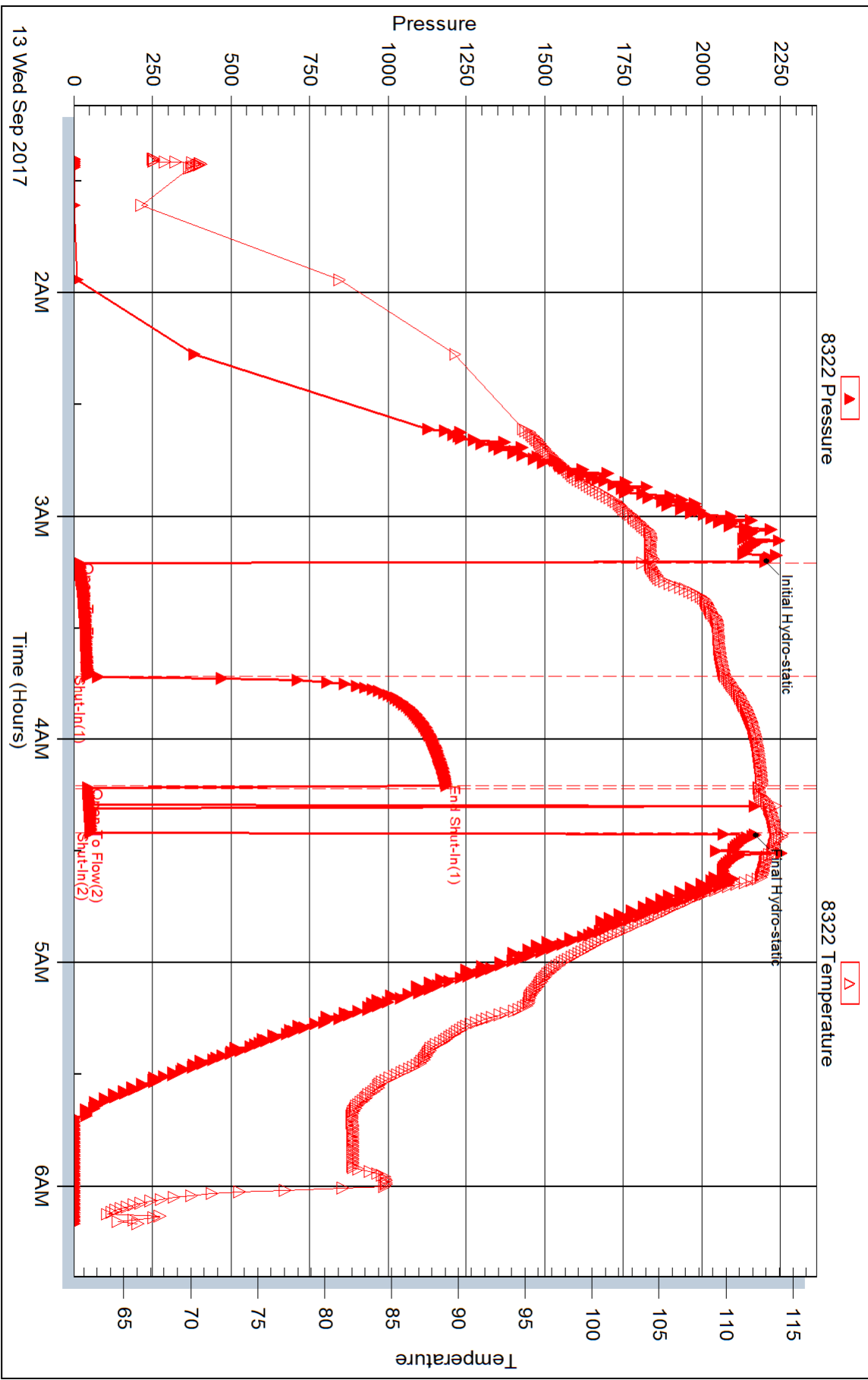
Laboratory Name: Laboratory Location:

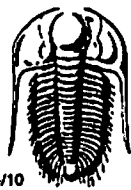
Recovery Comments: Recovery resistivity .315 ohms @ 75 deg

Pressure vs. Time



Pressure vs. Time





TRILOBITE TESTING INC.

1515 Commerce Parkway • Hays, Kansas 67601

Test Ticket

NO. 62638

Well Name & No. LN #2-18 Test No. 1 Date 11 Sep 17
 Company American Warrior Inc Elevation 2271 KB 2263 GL
 Address PO Box 399 Garden City KS 67846
 Co. Rep / Geo. Jason Alm Rig Discovery Rig 4
 Location: Sec. 18 Twp. 19S Rge. 21W Co. NESS State KS

Interval Tested 4285-4310 Zone Tested Cherokee A Sand
 Anchor Length 25 Drill Pipe Run 4248 Mud Wt. 9.35
 Top Packer Depth 4280 Drill Collars Run 30 Vis 51
 Bottom Packer Depth 4285 Wt. Pipe Run - WL 7.6
 Total Depth 4310 Chlorides 6000 ppm System LCM 1#

Blow Description I.F. Blow built to BOB in 4 1/2 minutes
I.S.I. No blow back

F.F. Blow built to 6 inches then died back to 3 inches

F.S.I. No blow back

Rec	Feet of	%gas	%oil	%water	%mud
<u>62</u>	<u>GIP</u>	<u>100%</u>			
<u>186</u>	<u>light oil cut muddy water</u>		<u>3%</u>	<u>57%</u>	<u>40%</u>
<u>372</u>	<u>muddy water</u>			<u>90%</u>	<u>10%</u>

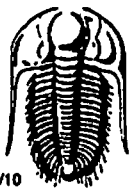
Rec Total _____ BHT 121 Gravity _____ API RW .230 @ 77 °F Chlorides 26,000 ppm

(A) Initial Hydrostatic <u>2116</u>	<input checked="" type="checkbox"/> Test <u>1150</u>	T-On Location <u>1:01 pm</u>
(B) First Initial Flow <u>94</u>	<input checked="" type="checkbox"/> Jars <u>250</u>	T-Started <u>3:18 pm</u>
(C) First Final Flow <u>140</u>	<input checked="" type="checkbox"/> Safety Joint <u>75</u>	T-Open <u>5:16 pm</u>
(D) Initial Shut-In <u>378</u>	<input type="checkbox"/> Circ Sub _____	T-Pulled <u>6:21 pm</u>
(E) Second Initial Flow <u>165</u>	<input type="checkbox"/> Hourly Standby _____	T-Out <u>8:28 pm</u>
(F) Second Final Flow <u>269</u>	<input checked="" type="checkbox"/> Mileage <u>110</u> 82.50	Comments _____
(G) Final Shut-In <u>375</u>	<input type="checkbox"/> Sampler _____	_____
(H) Final Hydrostatic <u>2100</u>	<input type="checkbox"/> Straddle _____	<input type="checkbox"/> Ruined Shale Packer _____

Initial Open <u>5</u>	<input type="checkbox"/> Shale Packer _____	<input type="checkbox"/> Ruined Packer _____
Initial Shut-In <u>15</u>	<input type="checkbox"/> Extra Packer _____	<input type="checkbox"/> Extra Copies _____
Final Flow <u>15</u>	<input type="checkbox"/> Extra Recorder _____	Sub Total <u>0</u>
Final Shut-In <u>30</u>	<input type="checkbox"/> Day Standby _____	Total <u>1557.50</u>
	<input type="checkbox"/> Accessibility _____	MP/DST Disc't _____
	Sub Total <u>1557.50</u>	

Approved By _____ Our Representative [Signature]

Trilobite Testing Inc. shall not be liable for damaged of any kind of the property or personnel of the one for whom a test is made, or for any loss suffered or sustained, directly or indirectly, through the use of its equipment, or its statements or opinion concerning the results of any test, tools lost or damaged in the hole shall be paid for at cost by the party for whom the test is made.



TRILOBITE TESTING INC.

1515 Commerce Parkway • Hays, Kansas 67601

Test Ticket

NO. 62639

Well Name & No. LN #2-18 Test No. 2 Date 12 Sep 17
 Company American Warrior Inc Elevation 2271 KB 2263 GL
 Address PO Box 399 Garden City, Kansas 67846
 Co. Rep / Geo. Jason Alm Rig Discovery Rig 4
 Location: Sec. 18 Twp. 19S Rge. 21W Co. Ness State KS

Interval Tested 4374-4382 Zone Tested Mississippi
 Anchor Length 8 Drill Pipe Run 4342 Mud Wt. 9.35
 Top Packer Depth 4369 Drill Collars Run 30 Vis 51
 Bottom Packer Depth 4374 Wt. Pipe Run - WL 7.6
 Total Depth 4382 Chlorides 6000 ppm System LCM 1#

Blow Description I.F. light surge at open then dead/Flush tool no help
I.S.I. No blowback
F.F. Dead no blow/Flush tool light surge then dead/Pull test

Rec	Feet of	%gas	%oil	%water	%mud
<u>45</u>	<u>Mud within oil layer in pipe</u>			<u>100</u>	
<u>45</u>					

Rec Total 45 BHT 116 Gravity _____ API RW _____ @ _____ °F Chlorides _____ ppm

(A) Initial Hydrostatic 2216 Test 1150 T-On Location 3:46 am
 (B) First Initial Flow 16 Jars 250 T-Started 5:12 am
 (C) First Final Flow 30 Safety Joint 75 T-Open 6:54 am
 (D) Initial Shut-In 1220 Circ Sub _____ T-Pulled 8:04 am
 (E) Second Initial Flow 33 Hourly Standby _____ T-Out 9:42 am
 (F) Second Final Flow 33 Mileage 110 82.50
 (G) Final Shut-In _____ Sampler _____
 (H) Final Hydrostatic 2158 Straddle _____
 Shale Packer _____
 Extra Packer _____
 Extra Recorder _____
 Day Standby _____
 Accessibility _____

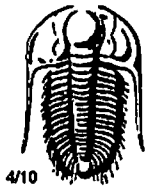
Initial Open 30
 Initial Shut-In 30
 Final Flow 10
 Final Shut-In _____

Sub Total 1557.50

Comments _____
 Ruined Shale Packer _____
 Ruined Packer _____
 Extra Copies _____
 Sub Total 0
 Total 1557.50
 MP/DST Disc't _____

Approved By _____ Our Representative [Signature]

Trilobite Testing Inc. shall not be liable for damaged of any kind of the property or personnel of the one for whom a test is made, or for any loss suffered or sustained, directly or indirectly, through the use of its equipment, or its statements or opinion concerning the results of any test, tools lost or damaged in the hole shall be paid for at cost by the party for whom the test is made.



TRILOBITE TESTING INC.

1515 Commerce Parkway • Hays, Kansas 67601

Test Ticket

NO. 62640

Well Name & No. LN #2-18 Test No. 3 Date 12 Sept 17
 Company American Warrior Inc Elevation 2271 KB 2263 GL
 Address PO Box 399 Garden City, KS 67846
 Co. Rep / Geo. Jason Alm Rig Discovery Rig 4
 Location: Sec. 18 Twp. 19S Rge. 21W Co. Ness State KS

Interval Tested 4375-4387 Zone Tested Mississippi
 Anchor Length 12 Drill Pipe Run 4342 Mud Wt. 9.4
 Top Packer Depth 3470 Drill Collars Run 30 Vis 56
 Bottom Packer Depth 4375 Wt. Pipe Run - WL 8.8
 Total Depth 4387 Chlorides 6200 ppm System LCM 1#

Blow Description I.F. light surge at opm then dead / Flush tool no help
I.S.I No blow back
F.F. Dead No blow / Flush tool light surge then dead / Pull test

Rec	Feet of	%gas	%oil	%water	%mud
<u>70</u>	<u>Water cut mud w/skin of oil in pipe</u>			<u>10%</u>	<u>90%</u>
Rec	Feet of	%gas	%oil	%water	%mud
Rec	Feet of	%gas	%oil	%water	%mud
Rec	Feet of	%gas	%oil	%water	%mud
Rec	Feet of	%gas	%oil	%water	%mud

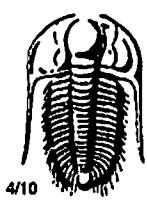
Rec Total 70 BHT 116 Gravity _____ API RW .335 @ 75° F Chlorides 21000 ppm

(A) Initial Hydrostatic 2186 Test 1150 T-On Location sketch on location
 (B) First Initial Flow 17 Jars 250 T-Started 3:12 pm
 (C) First Final Flow 39 Safety Joint 75 T-Open 4:58 pm
 (D) Initial Shut-In 1191 Circ Sub _____ T-Pulled 6:08 pm
 (E) Second Initial Flow 40 Hourly Standby _____ T-Out 7:51 pm
 (F) Second Final Flow 47 Mileage 110 Comments _____
 (G) Final Shut-In ~~30~~ Sampler _____
 (H) Final Hydrostatic 2177 Straddle _____

Shale Packer _____ Ruined Shale Packer _____
 Extra Packer _____ Ruined Packer _____
 Extra Recorder _____ Extra Copies _____
 Initial Open 30 Day Standby _____ Sub Total 0
 Initial Shut-In 30 Accessibility _____ Total 1475
 Final Flow 10 Sub Total 1475 MP/DST Disc't _____
 Final Shut-In _____

Approved By _____ Our Representative [Signature]

Trilobite Testing Inc. shall not be liable for damaged of any kind of the property or personnel of the one for whom a test is made, or for any loss suffered or sustained, directly or indirectly, through the use of its equipment, or its statements or opinion concerning the results of any test, tools lost or damaged in the hole shall be paid for at cost by the party for whom the test is made.



TRILOBITE TESTING INC.

1515 Commerce Parkway • Hays, Kansas 67601

Test Ticket

NO. 62641

Well Name & No. LN #2-18 Test No. 4 Date 13 Sep 17
 Company American Warrior Inc Elevation 2271 KB 2263 GL
 Address PO Box 399 Garden City KS 67846
 Co. Rep / Geo. Jason Alm Rig Discovery Rig 4
 Location: Sec. 18 Twp. 19S Rge. 21W Co. N55 State KS

Interval Tested 4376-4392 Zone Tested Mississippi
 Anchor Length 16 Drill Pipe Run 4342 Mud Wt. 9.4
 Top Packer Depth 4371 Drill Collars Run 30 Vis 56
 Bottom Packer Depth 4376 Wt. Pipe Run - WL 8.8
 Total Depth 4392 Chlorides 6200 ppm System LCM 1#

Blow Description I.F. light surface blow for 3 min. then dead / Flush tool no help
I.S.I No blow back
F.F. light surge at open then dead / Flush tool no help / Pull test

Rec	Feet of	%gas	%oil	%water	%mud
<u>75</u>	<u>Watery mud w/show of oil</u>			<u>30</u>	<u>70</u>
Rec	Feet of	%gas	%oil	%water	%mud
Rec	Feet of	%gas	%oil	%water	%mud
Rec	Feet of	%gas	%oil	%water	%mud
Rec	Feet of	%gas	%oil	%water	%mud

Rec Total 75 BHT _____ Gravity _____ API RW 315 @ 75 ° F Chlorides 22000 ppm

(A) Initial Hydrostatic <u>2203</u>	<input checked="" type="checkbox"/> Test <u>1150</u>	T-On Location <u>11:50 pm</u>
(B) First Initial Flow <u>17</u>	<input checked="" type="checkbox"/> Jars <u>250</u>	T-Started <u>1:24 am</u>
(C) First Final Flow <u>43</u>	<input checked="" type="checkbox"/> Safety Joint <u>75</u>	T-Open <u>3:12 am</u>
(D) Initial Shut-In <u>1185</u>	<input type="checkbox"/> Circ Sub _____	T-Pulled <u>4:27 am</u>
(E) Second Initial Flow <u>45</u>	<input type="checkbox"/> Hourly Standby _____	T-Out <u>6:10 am</u>
(F) Second Final Flow <u>53</u>	<input checked="" type="checkbox"/> Mileage <u>110</u> 82.50	Comments _____
(G) Final Shut-In _____	<input type="checkbox"/> Sampler _____	_____
(H) Final Hydrostatic <u>2183</u>	<input type="checkbox"/> Straddle _____	<input type="checkbox"/> Ruined Shale Packer _____
Initial Open <u>30</u>	<input type="checkbox"/> Shale Packer _____	<input type="checkbox"/> Ruined Packer _____
Initial Shut-In <u>30</u>	<input type="checkbox"/> Extra Packer _____	<input type="checkbox"/> Extra Copies _____
Final Flow <u>15</u>	<input type="checkbox"/> Extra Recorder _____	Sub Total <u>0</u>
Final Shut-In _____	<input type="checkbox"/> Day Standby _____	Total <u>1557.50</u>
	<input type="checkbox"/> Accessibility _____	MP/DST Disc't _____
	Sub Total <u>1557.50</u>	

Approved By _____

Our Representative [Signature]

Trilobite Testing Inc. shall not be liable for damaged of any kind of the property or personnel of the one for whom a test is made, or for any loss suffered or sustained, directly or indirectly, through the use of its equipment, or its statements or opinion concerning the results of any test, tools lost or damaged in the hole shall be paid for at cost by the party for whom the test is made.