

# ADVANTAGE ELEVATIONS

OIL FIELD SURVEYORS

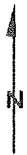
BOX 8604 - PRATT, KS 67124  
(620) 672-6491

116172  
INVOICE NO.

VAL ENERGY INC OPERATOR      V-3-4 NO.      HAMMER D FARM

COWLEY COUNTY      4 S      33s T      6e R      990' FSL & 660' FWL of Sec. LOCATION

ELEVATION: 1338' GR

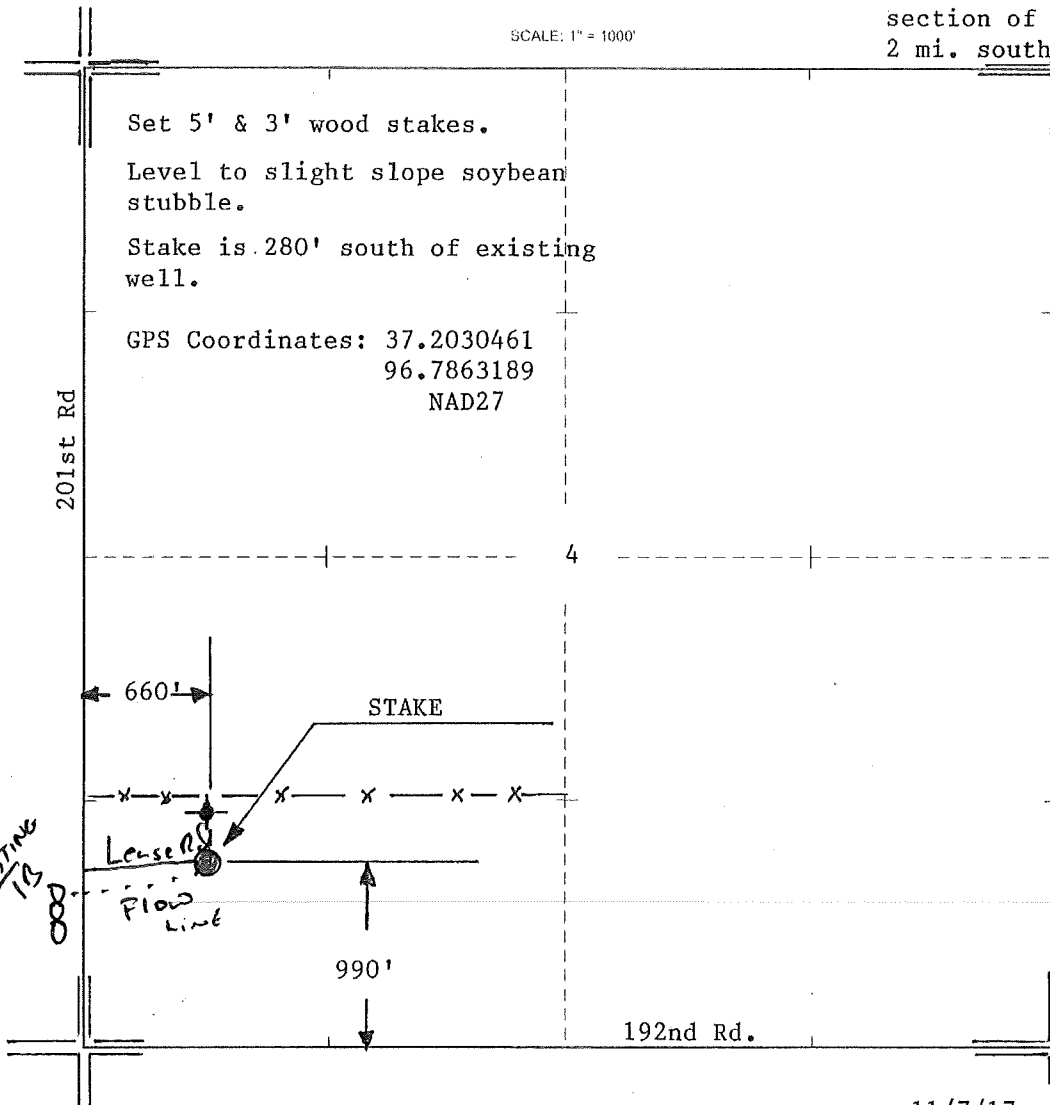


VAL ENERGY INC  
125 N Market, Ste 1110  
Wichita, KS 67202

AUTHORIZED BY: Todd Allam

Directions: From inter-  
section of Hwy 160 & 15,  
2 mi. south to NE corner  
of sec. 4.

SCALE: 1" = 1000'



DATE STAKED: 11/7/17