

# ADVANTAGE ELEVATIONS

OIL FIELD SURVEYORS

BOX 8604 - PRATT, KS 67124  
(620) 672-6491

116171

INVOICE NO.

VAL ENERGY INC

OPERATOR

V-4-8

NO.

HAMMER D

FARM

COWLEY

COUNTY

8

S

33s

T

6e

R

660' FNL & 660' FEL of Sec.

LOCATION

ELEVATION: 1340' GR

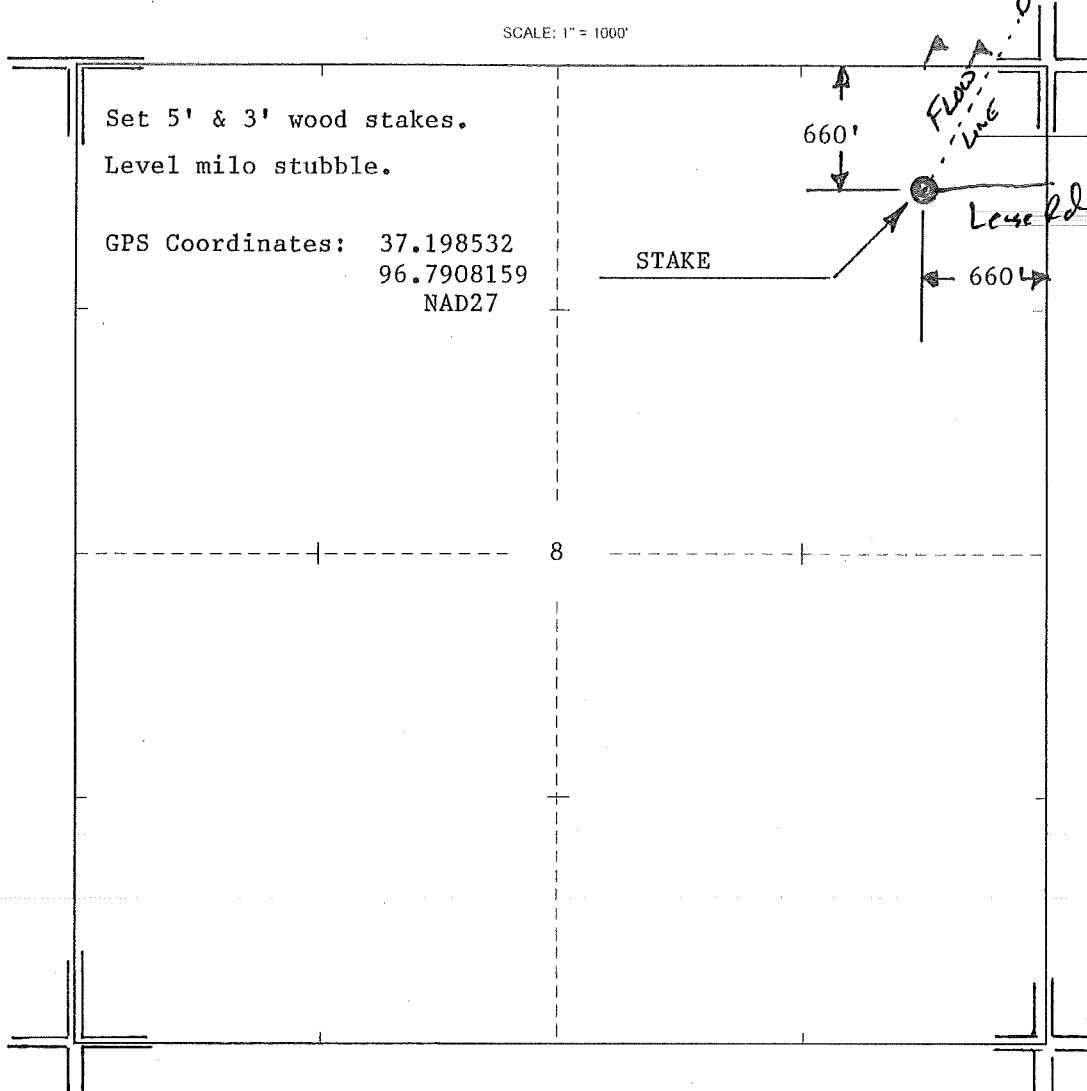


VAL ENERGY INC  
125 N Market, Ste 1110  
Wichita, KS 67202

Directions: From intersection  
of Hwy 160 & 15, then 1 mi. west,  
3 mi. south to NE corner of sec 8.

AUTHORIZED BY: Todd Allam

SCALE: 1" = 1000'



DATE STAKED: 11/7/17