



Scale 1:240 Imperial

Well Name: Reece-Riffey #1-5H
Surface Location: 330' FSL_2490' FWL SEC.5-T29S-R12W
Bottom Location: Sec.6-T29S-R12W
API: 15-151-22463-01-00
License Number: 31725
Spud Date: 7/28/2017 Time: 8:30 PM
Region: Pratt County
Drilling Completed: 8/15/2017 Time: 2:44 PM
Surface Coordinates: 319703 & 1954411
Bottom Hole Coordinates:
Ground Elevation: 1899.00ft
K.B. Elevation: 1910.00ft
Logged Interval: 4900.00ft To: 7983.00ft
Total Depth: 7983.00ft
Formation: Viola
Drilling Fluid Type:

OPERATOR

Company: Shelby Resources, LLC
Address: 13949 W Colfax Ave, Ste 120
Lakewood, CO 80401
Contact Geologist: Jeff Zoller / Janine Sturdavant
Contact Phone Nbr: 620-786-0807 / 303-907-2209
Well Name: Reece-Riffey #1-5H
Location: 330' FSL_2490' FWL SEC.5-T29S-R12W
API: 15-151-22463-01-00
Pool:
State: KS Field: Wildcat
Country: Pratt

CONTRACTOR

Contractor: Sterling Drilling Co
Rig #: 4
Rig Type: Mud Rotary
Spud Date: 7/28/2017 Time: 8:30 PM
TD Date: 8/15/2017 Time: 2:44 PM
Rig Release: Time:

LOGGED BY

Company:
Address:
Phone Nbr: 203-671-6034 / 620-617-4091
Logged By: Geologist Name: Jeremy Schwartz / Keith Reavis

ELEVATIONS

K.B. Elevation: 1910.00ft
 K.B. to Ground: 11.00ft

Ground Elevation: 1899.00ft

TOTAL DEPTH

Measurement Type:

Measurement Depth:
0.00

TVD:
0.00

SURFACE CO-ORDINATES

Well Type: Horizontal
 Longitude: -98.657606
 Latitude: 37.544611
 N/S Co-ord: 319703
 E/W Co-ord: 1954411

BOTTOM-HOLE CO-ORDINATES

Longitude:
 Latitude:
 N/S Co-ord:
 E/W Co-ord:
 Location: Sec.6-T29S-R12W

DRILLING FLUID SUMMARY

Type	Date	From Depth	To Depth
	7/31/2017	3202.00ft	4917.00ft

NOTES

The Shelby Resources, LLC Reece-Riffey #1-5H was drilled to a Measured Depth of 7983' and a True Vertical Depth of 4457', bottoming in and drilled horizontally through the Viola, with oversight by Tres Management, LLC. The well was steered horizontally by Wolverine Directional with the proposed well path being determined by Shelby. A TookeDaq gas detector was employed in the drilling of said well. Further completion procedures will be handled by Shelby Resources, LLC.

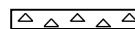
Respectfully Submitted,
 Jeremy Schwartz & Keith Reavis
 Geologists

DIRECTIONAL

Company: Wolverine Directional / Terrapilot MWD
 Services: Directional Drilling
 Driller's Names: Sid Richardson / Floyd Dennis
 MWD Operator: Brian Bobo / Charlie McDougal
 Kick Off Depth: 3840.00
 Plane of Vert Sect: Max Deviation:
 Total Vert Sect:

ROCK TYPES

 Dolprim

 Cht

 Shgy

 Shblk

ACCESSORIES

MINERAL

- △ Chert White
- P Pyrite
- Argillaceous/Shale

STRINGER

- ▨ Dolomite
- ▨ Shale
- ▨ green shale

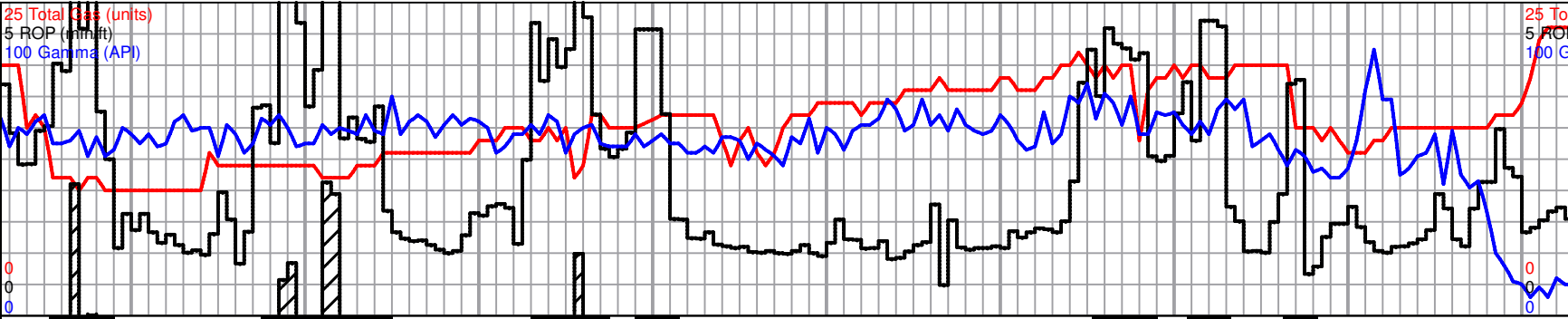
OTHER SYMBOLS

OIL SHOWS

- Even Stn
- Spotted Stn 50 - 75 %
- Spotted Stn 25 - 50 %
- Spotted Stn 1 - 25 %
- Questionable Stn
- D Dead Oil Stn
- Fluorescence

Printed by GEOstrip HZ Striplog version 4.0.8.15 (www.grsi.ca)

Curve Track #01
 Total Gas (units)
 ROP (min/ft)
 Gamma (API)
 1:240 Imperial

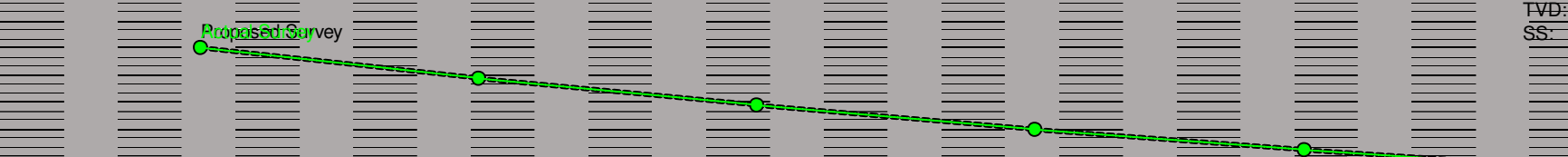


Sliding
 Depth
 Proposed Survey Data
 survey
 1:240 Imperial

1 survey	MD: 4,648.00 ft Incl: 72.90 Azi: 279.20 TVD: 4,414.15 ft	MD: 4,680.00 ft Incl: 75.10 Azi: 277.80 TVD: 4,422.97 ft	MD: 4,712.00 ft Incl: 76.90 Azi: 277.90 TVD: 4,430.71 ft	MD: 4,744.00 ft Incl: 78.20 Azi: 278.30 TVD: 4,437.61 ft	MD: 4,775.00 ft Incl: 80.20 Azi: 278.60 TVD: 4,443.42 ft	1 survey
----------	---	---	---	---	---	----------

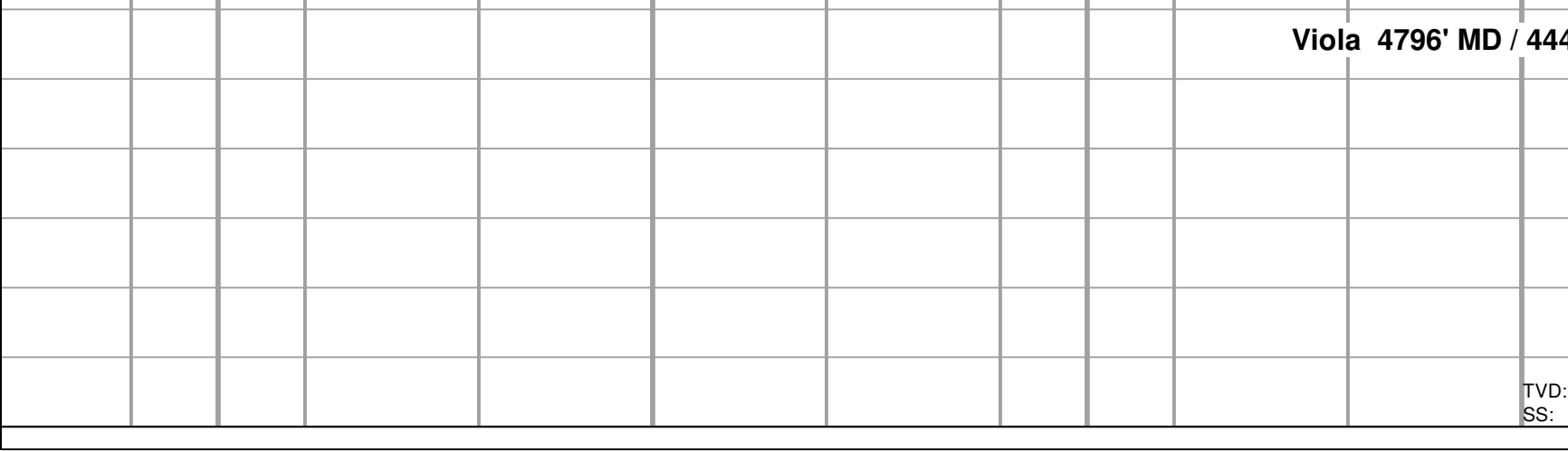
Actual Survey Data
 survey
 1:240 Imperial

1 survey	MD: 4,648.00 ft Incl: 72.90 Azi: 279.20 TVD: 4,414.15 ft	MD: 4,680.00 ft Incl: 75.10 Azi: 277.80 TVD: 4,422.97 ft	MD: 4,712.00 ft Incl: 76.90 Azi: 277.90 TVD: 4,430.71 ft	MD: 4,744.00 ft Incl: 78.20 Azi: 278.30 TVD: 4,437.61 ft	MD: 4,775.00 ft Incl: 80.20 Azi: 278.60 TVD: 4,443.42 ft	1 survey
----------	---	---	---	---	---	----------



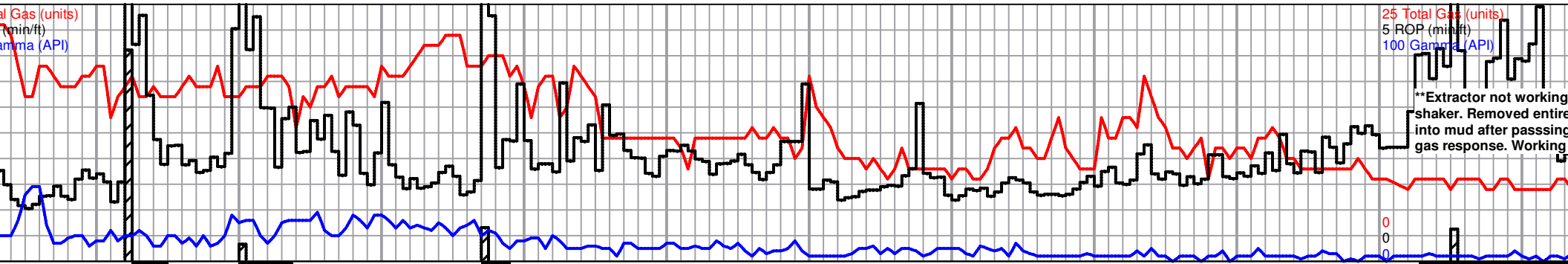
**Two Man Logging Operations Commence 8/7/17
 Geologist Jeremy Schwartz on location**

Well Bore Cross Section
 Oil Shows



Viola 4796' MD / 444'

TVD: 4
 SS: -

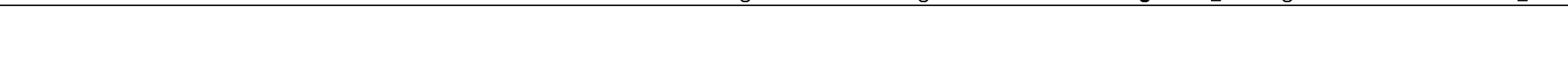


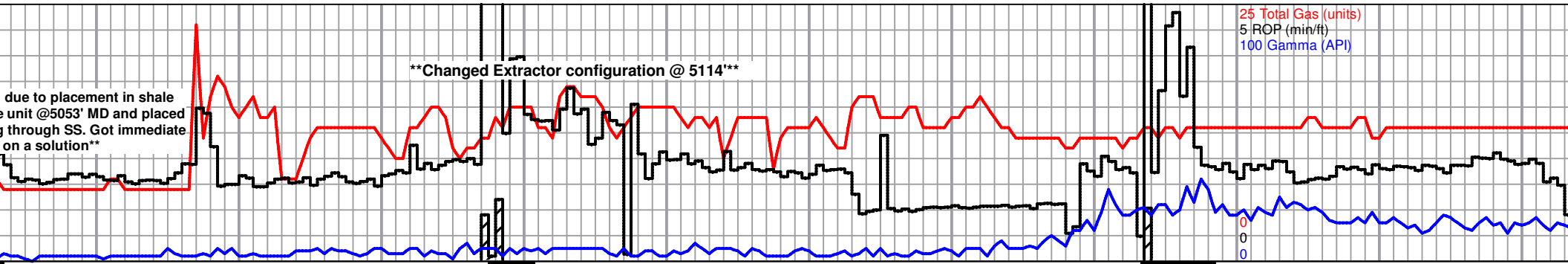
MD: 4,807.00 ft Incl: 80.50 Azi: 278.30 TVD: 4,448.79 ft	MD: 4,839.00 ft Incl: 83.40 Azi: 278.10 TVD: 4,453.27 ft	MD: 4,865.00 ft Incl: 86.40 Azi: 278.60 TVD: 4,455.58 ft	MD: 4,900.00 ft Incl: 88.82 Azi: 278.60 TVD: 4,457.04 ft	MD: 4,917.00 ft Incl: 90.00 Azi: 278.60 TVD: 4,457.21 ft	MD: 4,936.00 ft Incl: 89.60 Azi: 281.80 TVD: 4,458.06 ft	MD: 4,966.00 ft Incl: 89.80 Azi: 281.50 TVD: 4,458.21 ft	MD: 4,983.67 ft Incl: 88.00 Azi: 278.60 TVD: 4,458.37 ft	MD: 4,997.00 ft Incl: 90.10 Azi: 280.80 TVD: 4,458.24 ft	MD: 4,997.00 ft Incl: 90.10 Azi: 280.80 TVD: 4,458.24 ft	MD: 4,997.00 ft Incl: 90.10 Azi: 280.80 TVD: 4,458.24 ft
---	---	---	---	---	---	---	---	---	---	---

MD: 4,807.00 ft Incl: 80.50 Azi: 278.30 TVD: 4,448.79 ft	MD: 4,839.00 ft Incl: 83.40 Azi: 278.10 TVD: 4,453.27 ft	MD: 4,865.00 ft Incl: 86.40 Azi: 278.60 TVD: 4,455.58 ft	MD: 4,936.00 ft Incl: 89.60 Azi: 281.80 TVD: 4,458.06 ft	MD: 4,966.00 ft Incl: 89.80 Azi: 281.50 TVD: 4,458.21 ft	MD: 4,997.00 ft Incl: 90.10 Azi: 280.80 TVD: 4,458.24 ft
---	---	---	---	---	---



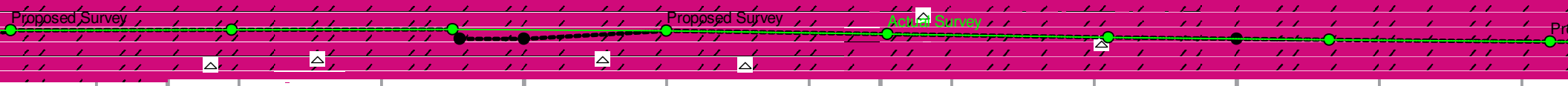
<p>7' TVD (-2537)</p> <p>**See Reece-Riffey 1-5H Vertical log for previous lithologies and descriptions**</p>	<p>Dolomite, very finely crushed, can only see white chips and some scattered gray sucrosic, most appear barren, some very scattered with questionable very light brown stain, trace small chips white chert, also with some scattered graphite (from mud system), NSFO, no odor or flour</p>	<p>Dolomite, mostly same as last description, found one small chip vuggy with saturated stain, with some gray sucrosic, vf-xln, upon break few free oil droplets in matrix, also with some very scattered chips white chert, barren, and some scattered graphite, scattered mostly dull with trace bright white fluor., fair odor</p>	<p>Dolomite, white, very fine appear barren, with some chips, also with scattered scattered dull white to yellow odor</p>
--	---	---	---



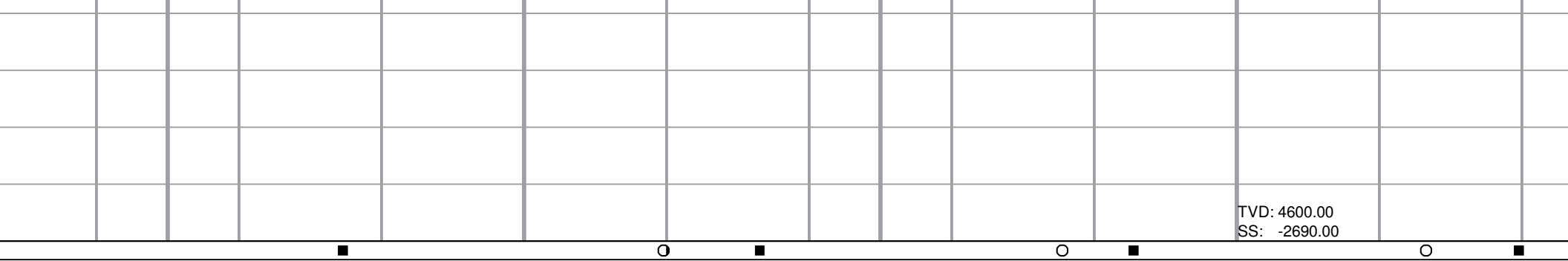


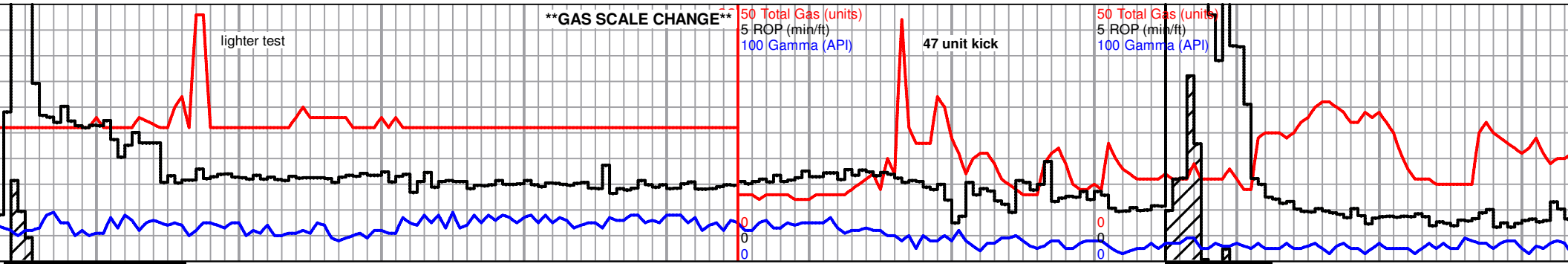
5,024.67 ft	MD: 5,028.00 ft	MD: 5,059.00 ft	MD: 5,090.00 ft	MD: 5,100.00 ft	MD: 5,091.33 ft	MD: 5,120.00 ft	MD: 5,151.00 ft	MD: 5,182.00 ft	MD: 5,200.00 ft	MD: 5,213.00 ft	MD:
88.00	Incl: 90.70	Incl: 90.30	Incl: 89.80	Incl: 90.00	Incl: 90.00	Incl: 88.30	Incl: 87.80	Incl: 87.80	Incl: 90.00	Incl: 88.70	Incl:
278.60	Azi: 277.20	Azi: 277.10	Azi: 277.10	Azi: 278.60	Azi: 278.60	Azi: 277.80	Azi: 277.60	Azi: 277.10	Azi: 278.60	Azi: 278.60	Azi:
: 4,459.80 ft	TVD: 4,458.02 ft	TVD: 4,457.75 ft	TVD: 4,457.73 ft	TVD: 4,460.97 ft	TVD: 4,460.97 ft	TVD: 4,458.22 ft	TVD: 4,459.28 ft	TVD: 4,460.47 ft	TVD: 4,460.97 ft	TVD: 4,461.41 ft	TVD:

MD: 5,028.00 ft	MD: 5,059.00 ft	MD: 5,090.00 ft	MD: 5,120.00 ft	MD: 5,151.00 ft	MD: 5,182.00 ft	MD: 5,213.00 ft	MD:
Incl: 90.70	Incl: 90.30	Incl: 89.80	Incl: 88.30	Incl: 87.80	Incl: 87.80	Incl: 88.70	Incl:
Azi: 277.20	Azi: 277.10	Azi: 277.10	Azi: 277.80	Azi: 277.60	Azi: 277.10	Azi: 278.60	Azi:
TVD: 4,458.02 ft	TVD: 4,457.75 ft	TVD: 4,457.73 ft	TVD: 4,458.22 ft	TVD: 4,459.28 ft	TVD: 4,460.47 ft	TVD: 4,461.41 ft	TVD:



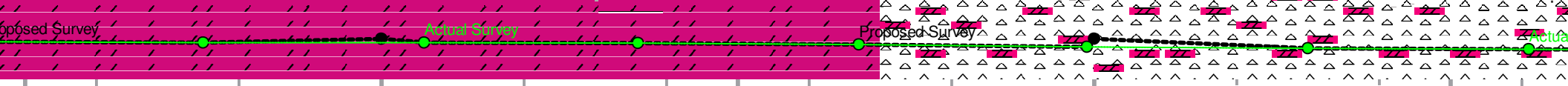
crushed chips, most scattered white chert graphite, some low fluor., NSFO, poor	Very fine crushed dolomite chips, white. with slight influx white chert chips, slightly less graphite, NSFO, some scattered dull to bright white to yellow fluor., no odor	Very fine crushed dolomite chips, white, most appear barren, some with what appears to be possible slight stain, with some scattered small white chert chips, NSFO, abundant milky white to white fluor., fair odor	5160-5240 samples, same, white powdery dolomite, and some chert, questionable scattered stain, spotty bright fluorescence, some residual after acid test, still soft (chert residual?) no free oil, no odor	5260 - 5280 samples, same as before
---	--	---	---	-------------------------------------





5,244.00 ft	MD: 5,275.00 ft	MD: 5,300.00 ft	MD: 5,306.00 ft	MD: 5,336.00 ft	MD: 5,367.00 ft	MD: 5,399.00 ft	MD: 5,400.00 ft	MD: 5,430.00 ft	MD: 5,430.00 ft	MD: 5,464.38 ft
Incl: 88.90	Incl: 90.10	Incl: 90.00	Incl: 90.00	Incl: 89.30	Incl: 88.70	Incl: 88.50	Incl: 90.00	Incl: 89.40	Incl: 89.40	Incl: 89.40
Azi: 281.10	Azi: 281.10	Azi: 280.75	Azi: 280.80	Azi: 280.80	Azi: 280.90	Azi: 280.40	Azi: 283.75	Azi: 282.20	Azi: 282.20	Azi: 282.20
TVD: 4,462.06 ft	TVD: 4,462.33 ft	TVD: 4,460.97 ft	TVD: 4,462.31 ft	TVD: 4,462.49 ft	TVD: 4,463.03 ft	TVD: 4,463.81 ft	TVD: 4,460.97 ft	TVD: 4,464.38 ft	TVD: 4,464.38 ft	TVD: 4,464.38 ft

MD: 5,244.00 ft	MD: 5,275.00 ft	MD: 5,306.00 ft	MD: 5,336.00 ft	MD: 5,367.00 ft	MD: 5,399.00 ft	MD: 5,430.00 ft	MD: 5,430.00 ft	MD: 5,464.38 ft	MD: 5,464.38 ft	MD: 5,464.38 ft
Incl: 88.90	Incl: 90.10	Incl: 90.00	Incl: 89.30	Incl: 88.70	Incl: 88.50	Incl: 89.40	Incl: 89.40	Incl: 89.40	Incl: 89.40	Incl: 89.40
Azi: 281.10	Azi: 281.10	Azi: 280.80	Azi: 280.80	Azi: 280.90	Azi: 280.40	Azi: 282.20	Azi: 282.20	Azi: 282.20	Azi: 282.20	Azi: 282.20
TVD: 4,462.06 ft	TVD: 4,462.33 ft	TVD: 4,462.31 ft	TVD: 4,462.49 ft	TVD: 4,463.03 ft	TVD: 4,463.81 ft	TVD: 4,464.38 ft	TVD: 4,464.38 ft	TVD: 4,464.38 ft	TVD: 4,464.38 ft	TVD: 4,464.38 ft



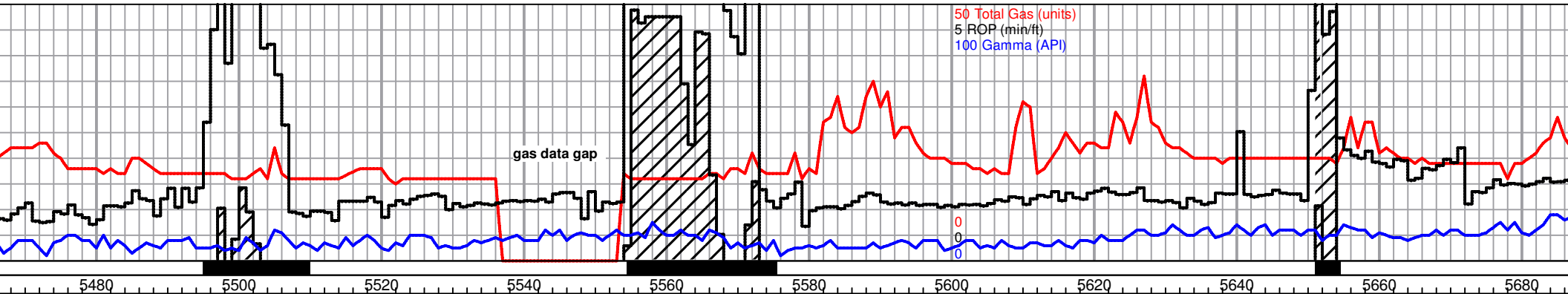
5300-5400 samples, same as before

5420 sample, flood chert, white opaque to translucent, sharp, fresh, larger fragments than associated dolomite (powder), appx 50/50 chert-dol., no visible shows

5440-5480 sample, chert and dolomite as previous, few small specimens dolomite, sucrosic, golden brown (stain?), no free oil, bright fluorescence, no cut, no odor

Roughly 50/50 some scattered to see some brown, sucrosic stain, some rhombic, scattered odor

TVD: 4600.00
SS: -2690.00

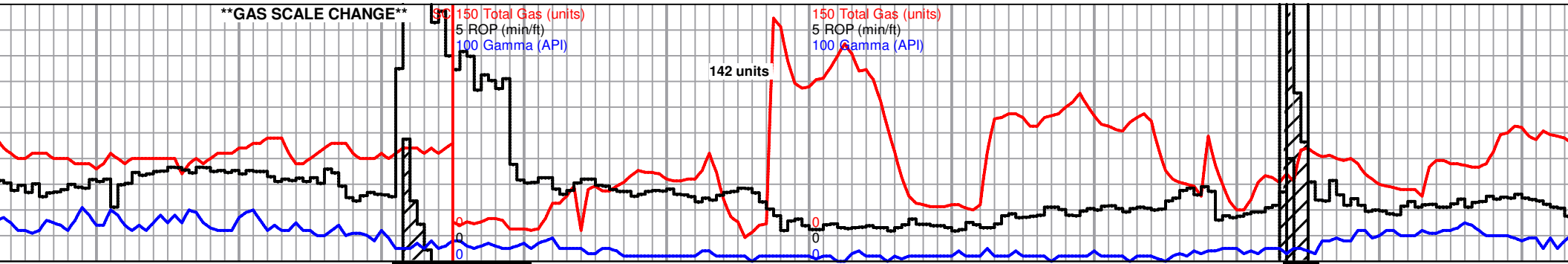


MD: 5,461.00 ft	MD: 5,492.00 ft	MD: 5,523.00 ft	MD: 5,556.00 ft	MD: 5,584.00 ft	MD: 5,600.00 ft survey	MD: 5,615.00 ft	MD: 5,646.00 ft	MD: 5,672.00 ft
Incl: 89.30	Incl: 89.60	Incl: 90.30	Incl: 90.90	Incl: 92.00	Incl: 90.00	Incl: 91.70	Incl: 91.70	Incl: 91.70
Azi: 282.70	Azi: 283.70	Azi: 285.10	Azi: 285.10	Azi: 287.30	Azi: 289.33	Azi: 287.30	Azi: 287.60	Azi: 287.60
TVD: 4,464.73 ft	TVD: 4,465.03 ft	TVD: 4,465.06 ft	TVD: 4,464.71 ft	TVD: 4,464.00 ft	TVD: 4,460.97 ft	TVD: 4,463.00 ft	TVD: 4,462.08 ft	TVD: 4,462.08 ft

MD: 5,461.00 ft	MD: 5,492.00 ft	MD: 5,523.00 ft	MD: 5,556.00 ft	MD: 5,584.00 ft ¹ survey	MD: 5,615.00 ft	MD: 5,646.00 ft	MD: 5,672.00 ft
Incl: 89.30	Incl: 89.60	Incl: 90.30	Incl: 90.90	Incl: 92.00	Incl: 91.70	Incl: 91.10	Incl: 90.00
Azi: 282.70	Azi: 283.70	Azi: 285.10	Azi: 285.10	Azi: 287.30	Azi: 287.30	Azi: 287.60	Azi: 286.00
TVD: 4,464.73 ft	TVD: 4,465.03 ft	TVD: 4,465.06 ft	TVD: 4,464.71 ft	TVD: 4,464.00 ft	TVD: 4,463.00 ft	TVD: 4,462.25 ft	TVD: 4,462.25 ft



<p>mix white chert and dolomite, and dolomite samples large enough to see structure, dolomite, white to light tan with possible light golden brown stain, scattered chips sub-rhombic to rhombic mostly dull fluor., NSFO, no odor</p>	<p>Samples mostly same as previous description, possible stain appears to be slightly dropping out but still visible on some very scattered chips, 5560' sample with slight odor, scattered bright white to yellow fluor. and slight show gas bubbles, 5580' sample with very scattered dull fluor and no odor, NSFO in either sample</p>	<p>Chert and dolomite as previously, some very scattered dolomite chips sub-rhombic to rhombic, some with very scattered possible light golden brown stain, slight odor and good scattered bright fluor., in 5600' sample, no odor and very scattered dull fluor. with very slight show gas bubbles in 5620', NSFO in either sample</p>	<p>Dolomite with some chert, influx dolomite, white, chips big enough to see are sucrosic to sub-rhombic-rhombic, some with scattered to saturated light golden brown stain, with some scattered calcite crystals, NSFO, good scattered bright white to yellow fluor., 5660' sample mostly same with shows appearing to be dropping out, less gassy, very scattered dull fluor., NSFO,</p>	<p>5700'-5720' sample, Dolomite and white dolomite chips mostly sucrosic, no visible NSFO, very scattered dull to bright yellow no odor</p>
<p>TVD: 4600.00 SS: -2690.00</p>				



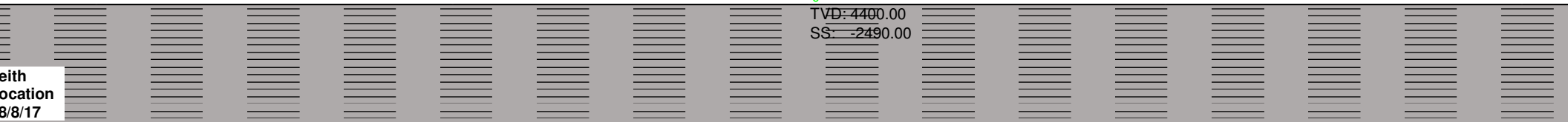
MD: 5,700.00 ft
 Incl: 91.70
 Azi: 287.60
 TVD: 4,460.48 ft

MD: 5,800.00 ft ¹ survey
 Incl: 91.70
 Azi: 287.60
 TVD: 4,457.51 ft

MD: 5,841.00 ft
 Incl: 91.70
 Azi: 287.60
 TVD: 4,456.30 ft

MD: 5,882.00 ft
 Incl: 91.70
 Azi: 287.60
 TVD: 4,455.10 ft

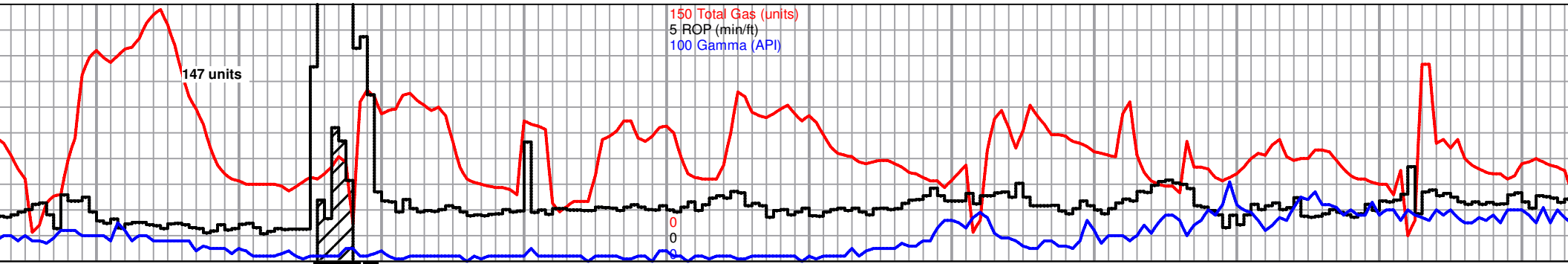
MD: 5,700.00 ft	MD: 5,708.00 ft	MD: 5,739.00 ft	MD: 5,770.00 ft	MD: 5,800.00 ft	MD: 5,831.00 ft	MD: 5,862.00 ft	MD: 5,893.00 ft
Incl: 91.70	Incl: 89.90	Incl: 90.30	Incl: 91.90	Incl: 92.10	Incl: 91.80	Incl: 91.00	Incl: 90.10
Azi: 287.60	Azi: 286.40	Azi: 286.90	Azi: 288.80	Azi: 289.40	Azi: 289.90	Azi: 289.40	Azi: 289.00
TVD: 4,460.48 ft	TVD: 4,461.97 ft	TVD: 4,461.92 ft	TVD: 4,461.33 ft	TVD: 4,460.28 ft	TVD: 4,459.22 ft	TVD: 4,458.47 ft	TVD: 4,458.17 ft



Well location
8/8/17

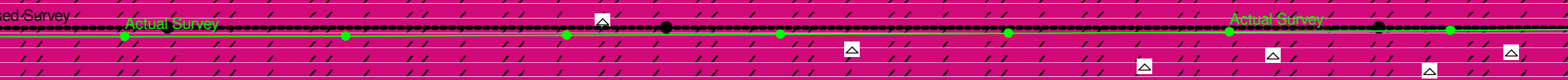
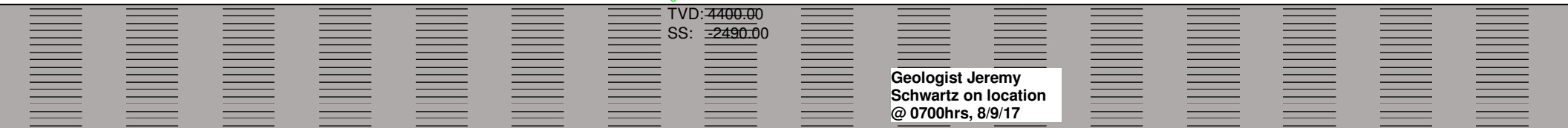
white chert, visible stain, yellow fluor..	dolomite, white to light gray, microcrystalline, crushed but still some defined crystals, moderate black to brown stain, appears mostly gilsonitic, staining within crystal cleavage, fair to good spotty fluorescence, no odor, some scattered cherts	dolomite as before, increased staining, still carrying some chert	5860 sample, dolomite as before, very heavy stain, abundant heavy gilsonitic residue in tray, slightly gassy, 5880 sample, decreasing stain, slightly gassy, slow bright milky cut with halo, slight increase in chert	5900 - 5920 sample, dolomite, white to cream, crushed, microcrystalline, fairly uniform crystal size, light spotty tray, faint odor, slow staining, scattered chert, good even fluorescence	5940 - 5960 sample, increase in stain gilsonitic, with halo
--	--	---	--	---	---

TVD: 4600.00
 SS: -2690.00

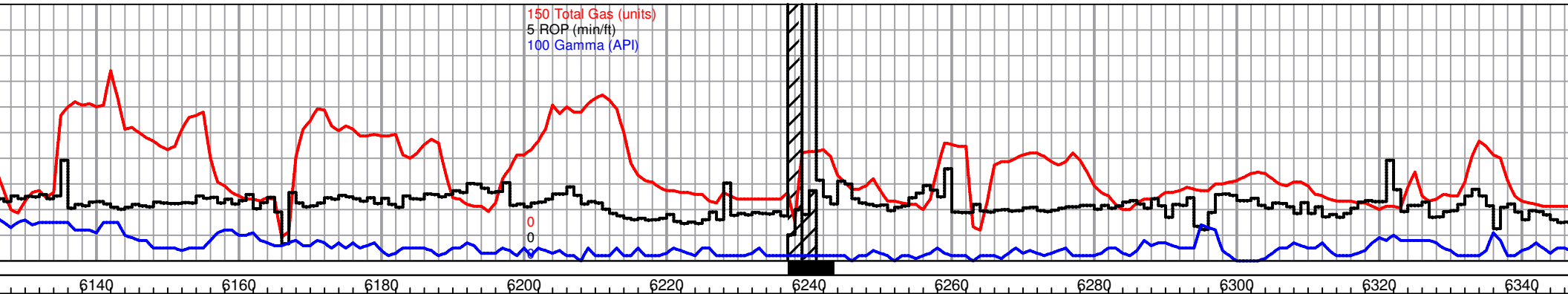


5,900.00 ft	MD: 5,930.02 ft	MD: 6,000.00 ft	MD: 6,100.00 ft
90.57	Incl: 90.00	Incl: 90.00	Incl: 90.00
288.97	Azi: 289.66	Azi: 289.66	Azi: 289.66
4,455.13 ft	TVD: 4,454.98 ft	TVD: 4,454.98 ft	TVD: 4,454.98 ft

0 ft	MD: 5,924.00 ft	MD: 5,955.00 ft	MD: 5,986.00 ft	MD: 6,016.00 ft	MD: 6,048.00 ft	MD: 6,079.00 ft	MD: 6,110.00 ft
	Incl: 90.00	Incl: 90.40	Incl: 90.80	Incl: 90.60	Incl: 90.90	Incl: 90.90	Incl: 91.00
	Azi: 289.20	Azi: 289.20	Azi: 289.40	Azi: 289.40	Azi: 289.70	Azi: 289.90	Azi: 289.70
	TVD: 4,458.14 ft	TVD: 4,458.03 ft	TVD: 4,457.71 ft	TVD: 4,457.34 ft	TVD: 4,456.92 ft	TVD: 4,456.44 ft	TVD: 4,455.92 ft



as before, onitic residue in bright milky cut	5980 - dolomite, finely crushed, white to cream, heavily stained, abundant gilsonitic residue in tray, faint odor, poor fluorescence, gassy, heavy scaley oily sheen, slow bright milky cut with halo	6000 sample, dolomite, white to cream, microcrystalline, fair crystal definition, heavily stained, abundant gilsonitic residue in tray, faint odor, poor fluorescence, gassy, slow bright milky cut with halo	6020 -6080 sample, dolomite, mostly white, finely crushed, light staining, , marked decrease from before, good even fluorescence, trace chert	Dolomite, white, micro-xln, small chips but xln structure visible, mostly sub-rhombic to rhombic with some scattered sucrosic, some good crystal definition, some appear barren, some have scattered to very scattered brown to black heavy stain, some flaky gilsonitic, also with some very scattered very light brown stain, 6100' sample with slight odor and very scattered dull fluor., 6120' sample with fair odor and slight increase in % rocks stained, scattered bright yellow to dull white fluor., trace chert, NSFO	Dolomite, white, micro-xln rhombic as previous, with stain as well as percent of appears to be slight influ stain, also with slight influ samples with scattered du with some white fluor., fair pyrite
			TVD: 4600.00 SS: -2690.00		



150 Total Gas (units)
5 ROP (min/ft)
100 Gamma (API)

MD: 6,200.00 ft 1 survey
Incl: 90.00
Azi: 289.66
TVD: 4,454.98 ft

MD: 6,300.00 ft
Incl: 90.00
Azi: 289.66
TVD: 4,454.98 ft

MD: 6,141.00 ft
Incl: 91.00
Azi: 289.70
TVD: 4,455.38 ft

MD: 6,172.00 ft
Incl: 91.10
Azi: 290.20
TVD: 4,454.81 ft

1 survey

MD: 6,203.00 ft
Incl: 90.80
Azi: 289.90
TVD: 4,454.30 ft

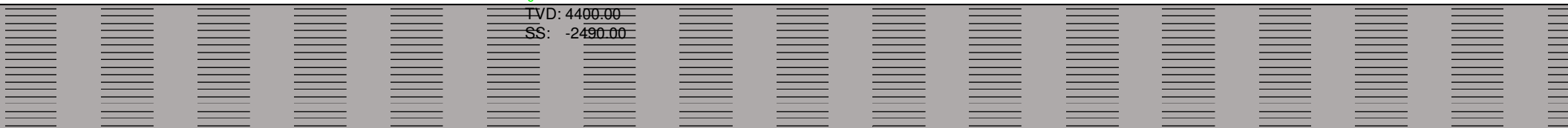
MD: 6,234.00 ft
Incl: 90.30
Azi: 290.20
TVD: 4,454.00 ft

MD: 6,265.00 ft
Incl: 89.30
Azi: 289.00
TVD: 4,454.11 ft

MD: 6,295.00 ft
Incl: 89.20
Azi: 289.00
TVD: 4,454.50 ft

MD: 6,326.00 ft
Incl: 89.00
Azi: 289.00
TVD: 4,454.99 ft

TVD: 4400.00
SS: -2490.00

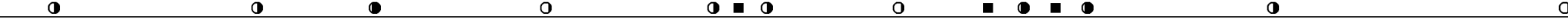


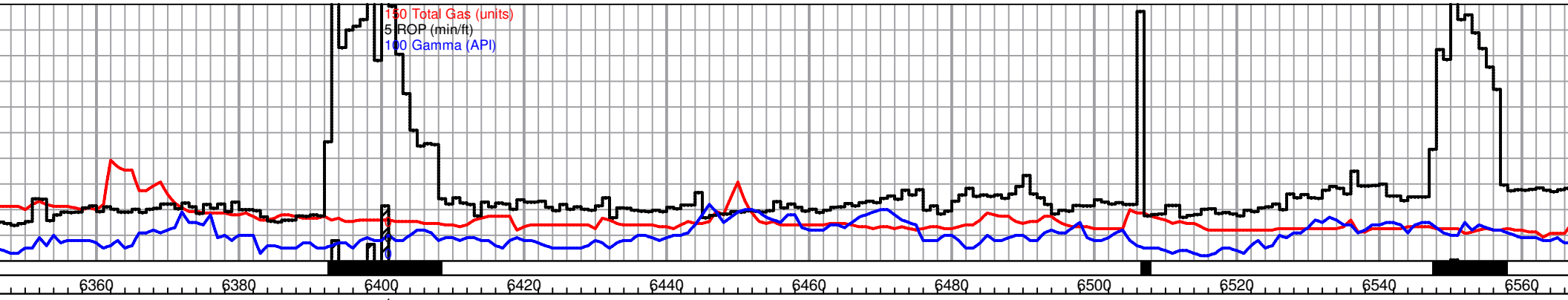
and sub-rhombic to increase in rocks with stain within rocks, light golden brown chert, 6140' & 6160' dull to bright mostly yellow to good odor, trace Dolomite as previous, with slight decrease in shows, few very scattered chips with a small vug or two visible and mostly saturated wet black stain, some scattered dull fluor., in 6180' sample, poor fluor., in 6200', poor to fair fleeting odor in both cups, trace pyrite with some very scattered white chert Dolomite, white, micro-xln, mostly sub-rhombic to rhombic, ~50/50 mix barren to scattered brown to black to flaky black gilsonitic stain, few chips mostly saturated wet black stain, chert mostly dropping out, trace pyrite, some very scattered bright white fluor., fair fleeting odor Dolomite, white, micro-xln, sub-rhombic to rhombic with mostly very scattered brown to black to flaky black stain, few chips sucrosic with mostly saturated wet brown stain, very scattered white chert, mostly good dull to bright white fluor. in tray and fair to fair fleeting odor in cups Dolomite as before, some scattered with mostly saturated to saturated light to dark brown stain and gassy, with influx white chert lagged back to 6280', good bright white fluor., poor fleeting odor

P
P

6280' sample slight increase in shows, noticeably light golden brown, good scattered bright white, fluor., fair odor

TVD: 4600.00
SS: -2690.00





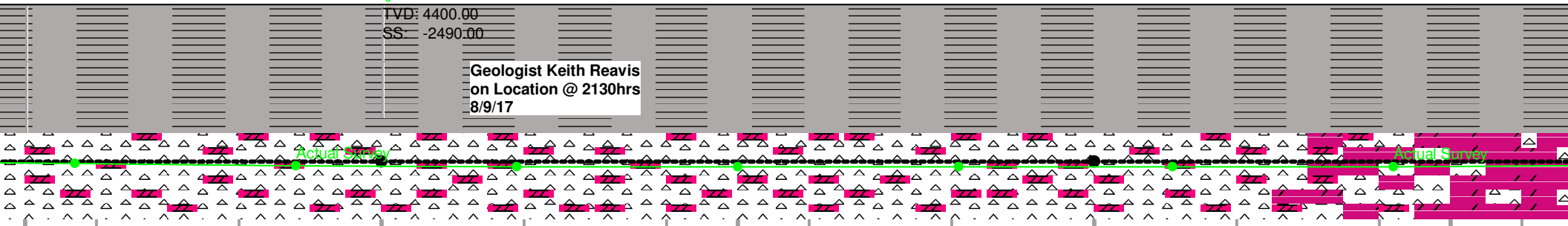
MD: 6,400.00 ft 1 survey
 Incl: 90.00
 Azi: 289.66
 TVD: 4,454.98 ft

MD: 6,500.00 ft
 Incl: 90.00
 Azi: 289.66
 TVD: 4,454.98 ft

MD: 6,357.00 ft Incl: 88.50 Azi: 289.20 TVD: 4,455.67 ft	MD: 6,388.00 ft survey Incl: 88.60 Azi: 289.20 TVD: 4,456.45 ft	MD: 6,419.00 ft Incl: 90.00 Azi: 289.40 TVD: 4,456.83 ft	MD: 6,450.00 ft Incl: 90.00 Azi: 289.50 TVD: 4,456.83 ft	MD: 6,481.00 ft Incl: 89.90 Azi: 289.50 TVD: 4,456.86 ft	MD: 6,511.00 ft Incl: 90.00 Azi: 289.40 TVD: 4,456.88 ft	MD: 6,542.00 ft Incl: 90.00 Azi: 289.20 TVD: 4,456.88 ft
---	--	---	---	---	---	---

TVD: 4400.00
 SS: -2490.00

Geologist Keith Reavis
 on Location @ 2130hrs
 8/9/17



6420' sample, Chert with some dolomite as previous, dolomite shows mostly gone, some very scattered dull white fluor, no odor

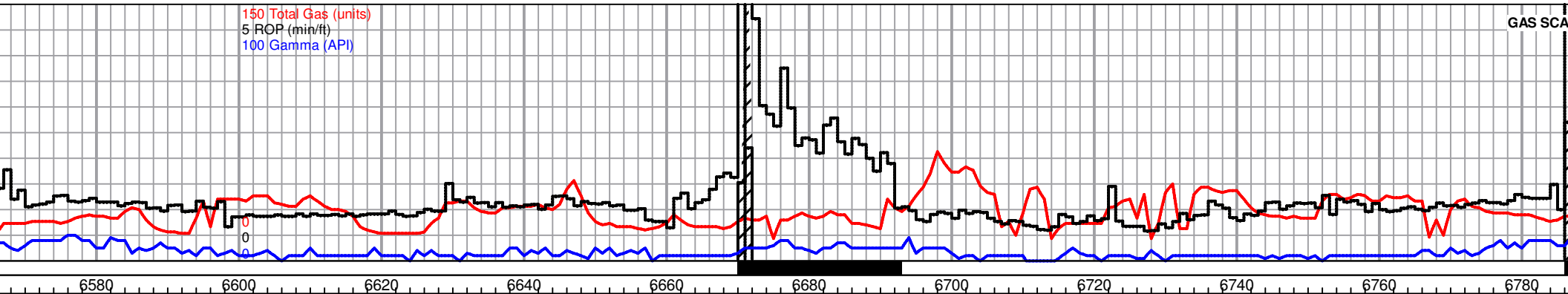
6440 - 6500 samples, chert, white to tan, dolomite, white, finely crushed, appx 50/50, no shows

6520 -6560 sampels, as before

6580 samples, as before, gradational dolomite increase, chert decrease, appx 70/30 dol. to chert, trace stain, spotty bright fluorescence

6600 - 6620 white to cream, some very fine, fairly heavy but free oil or odor, fluorescence, decreases to

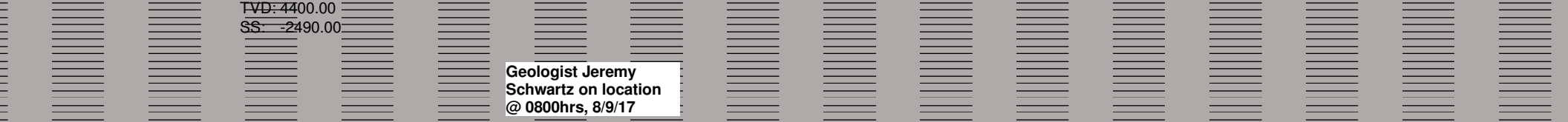
TVD: 4600.00
 SS: -2690.00



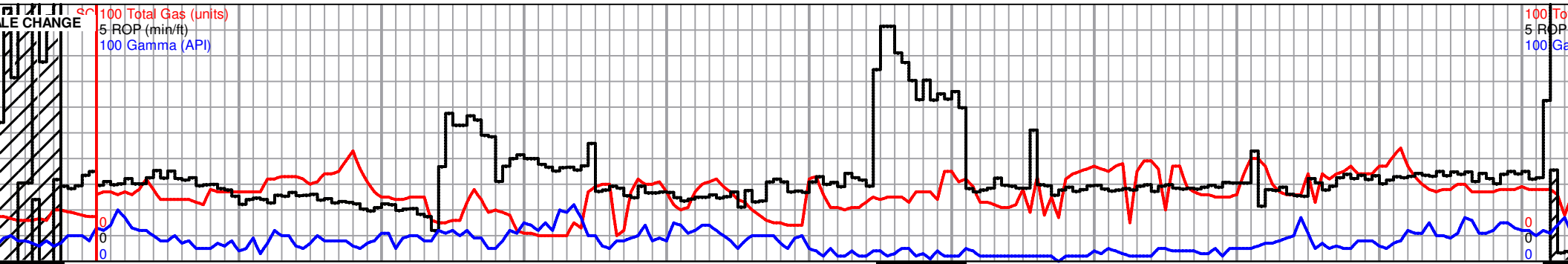
MD: 6,573.00 ft Incl: 91.90 Azi: 289.40 TVD: 4,456.37 ft	MD: 6,604.00 ft Incl: 92.20 Azi: 289.00 TVD: 4,455.26 ft	MD: 6,635.00 ft Incl: 92.00 Azi: 289.00 TVD: 4,454.12 ft	MD: 6,666.00 ft Incl: 91.20 Azi: 289.40 TVD: 4,453.26 ft	MD: 6,697.00 ft Incl: 89.50 Azi: 289.20 TVD: 4,453.07 ft	MD: 6,728.00 ft Incl: 88.60 Azi: 288.10 TVD: 4,453.58 ft	MD: 6,759.00 ft Incl: 88.30 Azi: 288.00 TVD: 4,454.42 ft
---	---	---	---	---	---	---

MD: 6,600.00 ft
Incl: 90.00
Azi: 289.66
TVD: 4,454.98 ft

MD: 6,700.00 ft
Incl: 90.00
Azi: 289.66
TVD: 4,454.98 ft

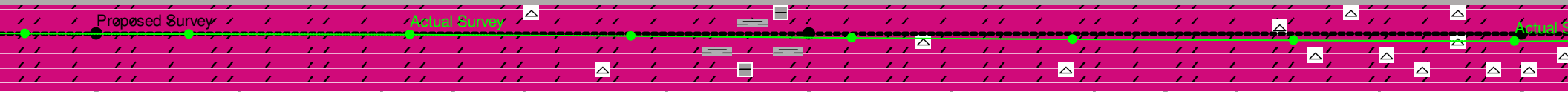
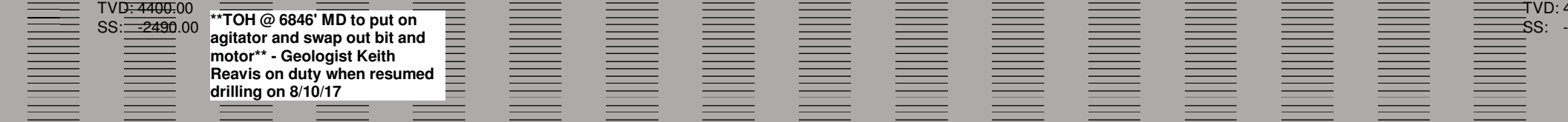


<p>samples, dolomite, m, finely crushed, the crystalline, even black staining, no show or, spotty bright faint cut, chert appx 20%</p>	<p>6640 - 6660 samples, same as before, decreasing chert</p>	<p>Mostly dolomite, white to cream, micro-xln, small chips sucrosic to sub-rhombic and rhombic when large enough to see crystal structure, most (~60 +%) with scattered to mostly saturated and saturated even black stain, some barren, scattered bright white fluor. somewhat gradually decreasing in 6700-6720' samples, some very scattered chert, fair odor in cups</p>	<p>Dolomite with some very scattered chert as previous with shows, odor, and fluor. steadily decreasing in each sample,</p>	<p>Dolomite with apparent slight influx chert, shows continue to steadily drop out until 6840' sample where only very scattered chips have stain and no odor</p>
<p>TVD: 4600.00 SS: -2690.00</p>				

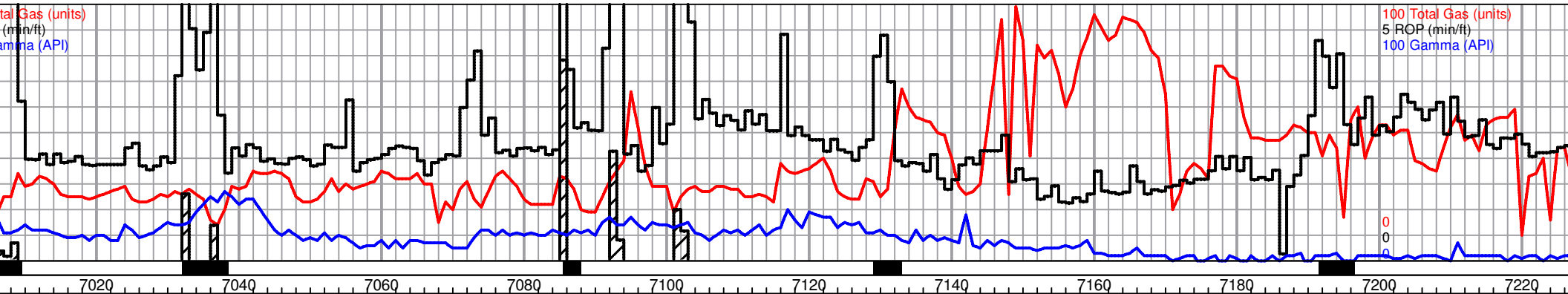


MD: 6,800.00 ft Incl: 90.00 Azi: 289.66 TVD: 4,454.98 ft	MD: 6,900.00 ft Incl: 90.00 Azi: 289.66 TVD: 4,454.98 ft	MD: 7,000.00 ft Incl: 90.00 Azi: 289.66 TVD: 4,454.98 ft
---	---	---

MD: 6,790.00 ft Incl: 89.60 Azi: 288.10 TVD: 4,454.99 ft	MD: 6,813.00 ft Incl: 89.90 Azi: 288.30 TVD: 4,455.09 ft	MD: 6,844.00 ft Incl: 89.20 Azi: 288.10 TVD: 4,455.33 ft	MD: 6,875.00 ft Incl: 88.90 Azi: 288.10 TVD: 4,455.85 ft	MD: 6,906.00 ft Incl: 88.70 Azi: 288.30 TVD: 4,456.50 ft	MD: 6,937.00 ft Incl: 89.40 Azi: 290.80 TVD: 4,457.01 ft	MD: 6,968.00 ft Incl: 89.30 Azi: 290.10 TVD: 4,457.36 ft
---	---	---	---	---	---	---



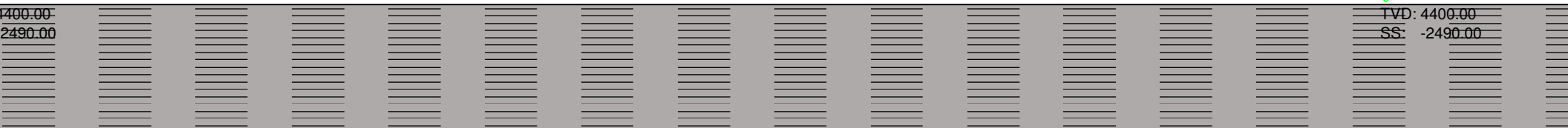
same as before	dolomite, white to cream, finely crushed to microcrystalline rhombic, spotty black gilsonitic staining, trace chert, spotty fluorescence, no cut	6960 sample, dolomite as before with some shales, gray, silty, micaceous, calcareous, some fossils, trace green waxy, trace brick red, silty, trace dolomite, tan, cryptocrystalline, surcrosic, very dense NOTE: I believe this is foreign, from pits or mud system?	6980 & 7000 samples, shale drops out, same dolomite as previous	dolomite as previous, light staining, increased chert, light gray to white, appx 20%	same as before
TVD: 4600.00 SS: -2690.00					TVD: 4 SS: -



MD: 7,100.00 ft
 Incl: 90.00
 Azi: 289.66
 TVD: 4,454.98 ft

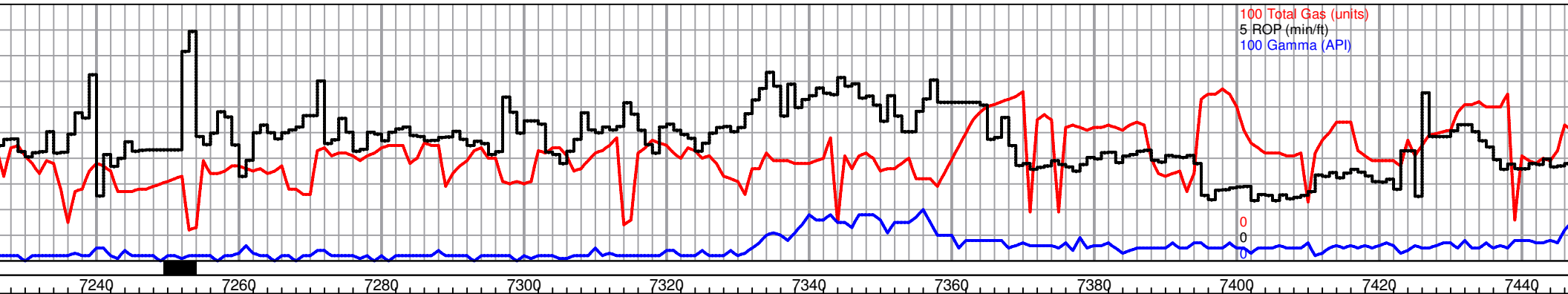
MD: 7,200.00 ft
 Incl: 90.00
 Azi: 289.66
 TVD: 4,454.98 ft

MD: 6,999.00 ft	MD: 7,029.00 ft	MD: 7,060.00 ft	MD: 7,091.00 ft	MD: 7,122.00 ft	MD: 7,153.00 ft	MD: 7,184.00 ft	MD: 7,215.00 ft
Incl: 89.70	Incl: 92.30	Incl: 93.50	Incl: 92.90	Incl: 92.80	Incl: 92.70	Incl: 92.20	Incl: 90.70
Azi: 289.70	Azi: 289.70	Azi: 289.90	Azi: 289.70	Azi: 290.10	Azi: 290.10	Azi: 290.20	Azi: 290.40
TVD: 4,457.63 ft	TVD: 4,457.11 ft	TVD: 4,455.54 ft	TVD: 4,453.81 ft	TVD: 4,452.27 ft	TVD: 4,450.78 ft	TVD: 4,449.46 ft	TVD: 4,448.00 ft



s previous	7100 - 7120 samples, white powdery dolomite with chert as before, slight increase in chert, marked increase in stain, fair even black staining, abundant gilsonite like residue, 7120 sample with fair even fluorescence, no odor, faint cut with halo	7140 - 7160 samples, very finely ground, slight increase in stain, faint odor, chert to dolomite ratio un-dicernable	beginning 7180 sample, dolomite, white to light gray, microcrystalline, fine ground but with some crystal definition, heavy black stain, sheen in wet cup, good odor, gassy, poor fluorescence, good cut, decreased chert from previous	7200 sample, marked decrease in show and odor	7220-7240 sample dolomite, white to light gray, microcrystalline, fine ground but with some fair crystal definition, heavy black stain, sheen in wet cup, poor fluorescence, faint to fair odor, good cut, some chert	same a
------------	--	--	---	---	---	--------

MD: 7,200.00 ft
 Incl: 90.00
 Azi: 289.66
 TVD: 4,454.98 ft

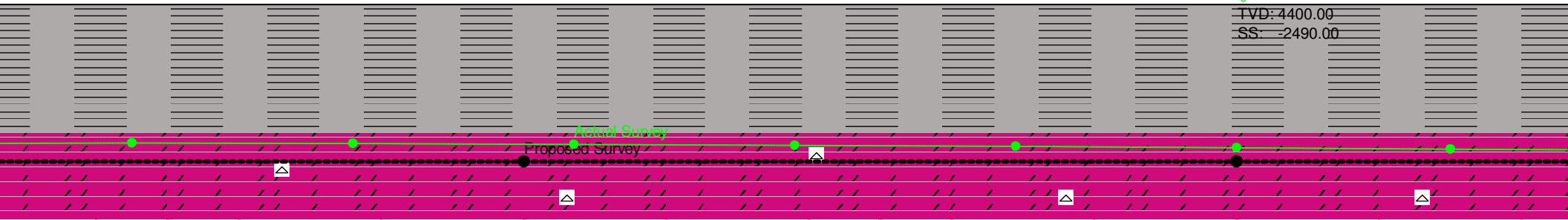


100 Total Gas (units)
 5 ROP (min/ft)
 100 Gamma (API)

MD: 7,300.00 ft
 Incl: 90.00
 Azi: 289.66
 TVD: 4,454.98 ft

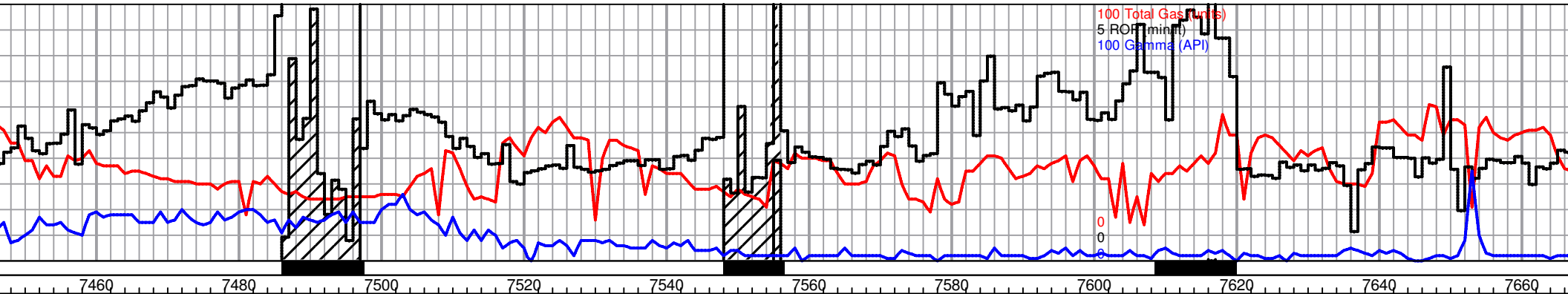
MD: 7,400.00 ft ^{1 survey}
 Incl: 90.00
 Azi: 289.66
 TVD: 4,454.98 ft

MD: 7,245.00 ft Incl: 90.10 Azi: 290.90 TVD: 4,448.46 ft	MD: 7,276.00 ft Incl: 89.40 Azi: 290.80 TVD: 4,448.60 ft	MD: 7,307.00 ft Incl: 89.30 Azi: 290.80 TVD: 4,448.95 ft	MD: 7,338.00 ft Incl: 89.30 Azi: 290.80 TVD: 4,449.33 ft	MD: 7,369.00 ft Incl: 89.20 Azi: 291.30 TVD: 4,449.73 ft	MD: 7,400.00 ft ^{1 survey} Incl: 89.20 Azi: 291.70 TVD: 4,450.17 ft	MD: 7,430.00 ft Incl: 89.00 Azi: 291.80 TVD: 4,450.64 ft
---	---	---	---	---	---	---



s previous	7320 sample, as previous, slight increase in total staining and gilstonitic residue, still fair odor, noting increasing metal shavings in hole	same as previous, decreasing odor	7440 - 7480 sample, as before, marked decreasing stain, now poor to spotty staining, no odor, scattered bright mineral fluorescence
------------	--	-----------------------------------	---

TVD: 4600.00
 SS: -2690.00



MD: 7,500.00 ft
 Incl: 90.00
 Azi: 289.66
 TVD: 4,454.98 ft

MD: 7,600.00 ft
 Incl: 90.00
 Azi: 289.66
 TVD: 4,454.98 ft

MD: 7,461.00 ft
 Incl: 89.60
 Azi: 292.20
 TVD: 4,451.02 ft

MD: 7,492.00 ft
 Incl: 91.40
 Azi: 292.40
 TVD: 4,450.75 ft

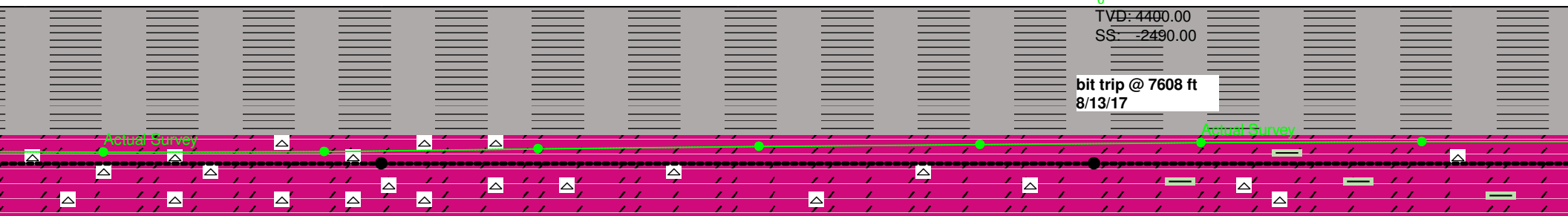
MD: 7,522.00 ft
 Incl: 92.00
 Azi: 293.20
 TVD: 4,449.86 ft

MD: 7,553.00 ft
 Incl: 91.30
 Azi: 292.20
 TVD: 4,448.96 ft

MD: 7,584.00 ft
 Incl: 91.30
 Azi: 292.00
 TVD: 4,448.26 ft

MD: 7,615.00 ft
 Incl: 90.80
 Azi: 290.60
 TVD: 4,447.69 ft

MD: 7,646.00 ft
 Incl: 90.70
 Azi: 290.20
 TVD: 4,447.29 ft



bit trip @ 7608 ft
 8/13/17

TVD: 4400.00
 SS: -2490.00

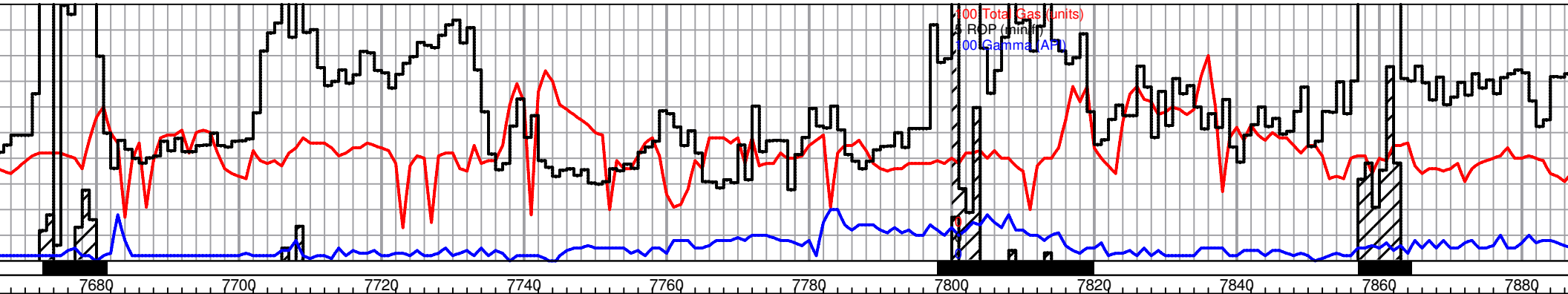
7500 and 7520 samples, very finely crushed/powdery white dolomite and light gray chert, appx 80/20, trace stain, no show free oil odor, no fluorescence

7540 sample, as previous, increase stain, still carrying abundant golden metal shavings in samples

7560 and 80 dolomite as previous, increased stain, deceased chert, fleeting odor, poor fluorescence - after resuming drilling, same thru 7640 sample with heavier stain

dolomite, white to light gray, fine powdery samples, lightly stained, fairly even bluish/white fluorescence, scattered cherts, scattered pale green soft shale

TVD: 4600.00
 SS: -2690.00



MD: 7,700.00 ft
 Incl: 90.00
 Azi: 289.66
 TVD: 4,454.98 ft

MD: 7,800.00 ft ^{1 survey}
 Incl: 90.00
 Azi: 289.66
 TVD: 4,454.98 ft

MD: 7,677.00 ft
 Incl: 89.20
 Azi: 290.10
 TVD: 4,447.31 ft

MD: 7,708.00 ft
 Incl: 89.00
 Azi: 290.10
 TVD: 4,447.80 ft

MD: 7,739.00 ft
 Incl: 89.20
 Azi: 289.40
 TVD: 4,448.29 ft

MD: 7,770.00 ft
 Incl: 89.10
 Azi: 289.70
 TVD: 4,448.75 ft

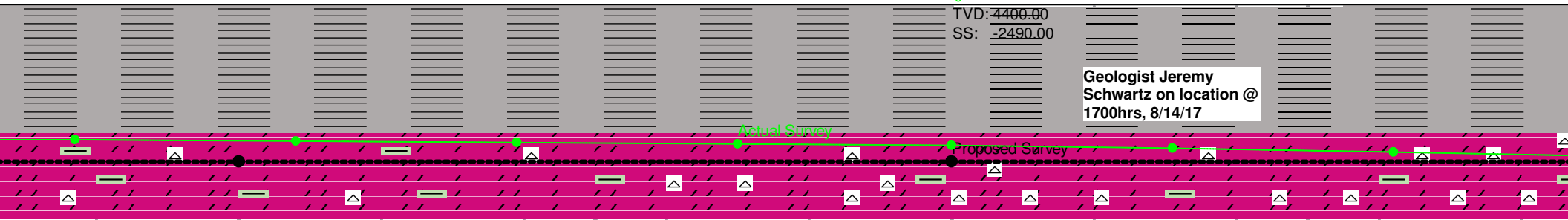
MD: 7,800.00 ft
 Incl: 88.50
 Azi: 289.50
 TVD: 4,449.38 ft

MD: 7,831.00 ft
 Incl: 88.00
 Azi: 289.90
 TVD: 4,450.32 ft

MD: 7,862.00 ft
 Incl: 87.10
 Azi: 289.00
 TVD: 4,451.65 ft

TVD: 4400.00
 SS: -2490.00

Geologist Jeremy Schwartz on location @ 1700hrs, 8/14/17



7720 - 7760 samples, dolomite, white to light gray, microcrystalline, some crystal definition, good black staining with gilsonitic residue, faint odor, spotty fluorescence, poor cut, some chert, appx. 5%, still carrying pale green shale

7780 sample, as previous, decreasing stain

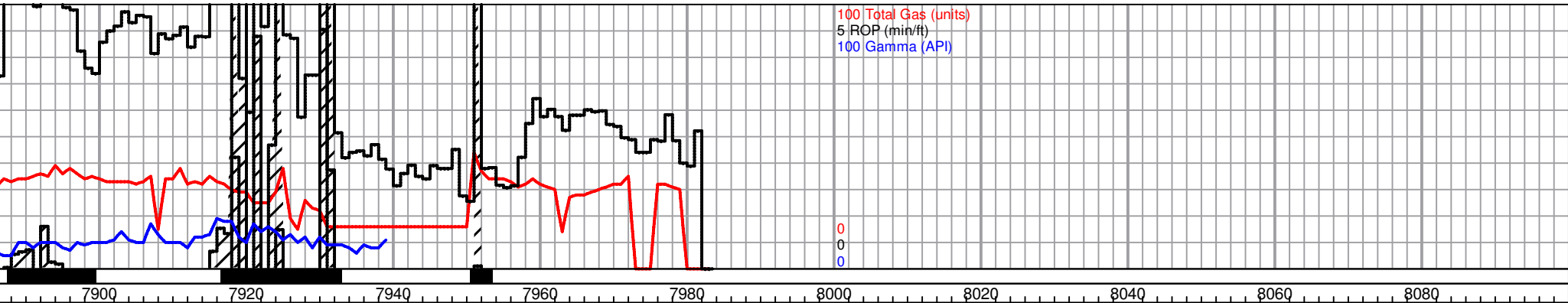
7800 sample, dolomite, white to light gray, crushed microcrystalline, some crystal definition, very uniform, light staining, some chert, decreasing pale green shales, poor fluorescence

Dolomite, white to light gray, very fine crushed micro-xln, some scattered sub-rhombic to rhombic crystal definition, most chips barren, some scattered with very scattered brown to black stain, few chips with very light brown even stain, slight influp white chert, trace pale green shales, trace poor dull yellow to white fluor., no odor

7860' sample lagged back ~7835' Dolomite as previous with decrease in chert, most dolomite with scattered to very scattered brown to wet black stain, some very small good rhombic chips with saturated light brown stain, trace pale green shales, **VSSFO**, some very scattered bright white to yellow fluor., good odor

Dolomite with some scattered chert as previous, trace pale green shales, NSFO, scattered dull yellow to white fluor., fair odor

TVD: 4600.00
 SS: -2690.00



100 Total Gas (units)
 5 ROP (min/ft)
 100 Gamma (API)

0
 0
 0

MD: 7,900.00 ft
 Incl: 90.00
 Azi: 289.66
 TVD: 4,454.98 ft

MD: 7,900.00 ft
 Incl: 90.00
 Azi: 289.66
 TVD: 4,454.98 ft

MD: 7,893.00 ft
 Incl: 87.10
 Azi: 288.70
 TVD: 4,453.22 ft

MD: 7,924.00 ft
 Incl: 87.40
 Azi: 288.80
 TVD: 4,454.70 ft

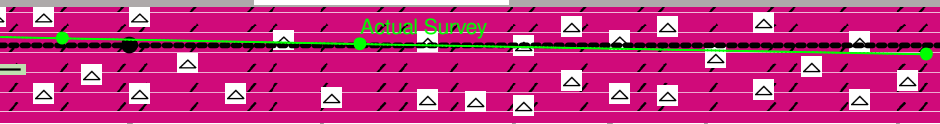
MD: 7,983.00 ft
 Incl: 87.40
 Azi: 288.80
 TVD: 4,457.38 ft

1 survey
 0
 TVD: 4400.00
 SS: -2490.00

****Continue Drilling to 7983' MD to avoid down time while waiting on loggers ETA****

Decision made to call TD @ 7929' MD 8/15/17

TD of 7983' MD reached @ 1444hrs 8/15/17
Begin process of conditioning the hole and preparing for logs.
Logging Operations Complete @ 1144hrs, 8/17/17
Geologist Jeremy Schwartz off location @ 1320hrs, 8/17/17



Dolomite as previous with shows slightly dropping out and slight influx chert, 7920' sample still influx chert (~60d/40c), some very scattered staining on dolomite, trace pale green shales, NSFO, scattered dull fluor., no odor

Dolomite and chert as previous, chert slightly increasing in 7940-7980' samples to eventual ~50/50 mix, some very scattered dolomite with trace to very scattered stain, trace pale green shale, NSFO, very scattered dull fluor., no odor

TVD: 4600.00
 SS: -2690.00