

LOTUS OPERATING CO. LLC

W. BOWMAN
NW-1/4 - SE-1/4

COUNTY: BARBER STATE: KS

SECTION: 35 RANGE: 13W

GRID: 5427

DEPTH TO TOP: 391'

DEPTH TO BOTTOM: 5624'

DEPTH TO TOP: 5624'

DEPTH TO BOTTOM: 5624'

DEPTH TO TOP: 5624'

DEPTH TO BOTTOM: 5624'

DEPTH TO TOP: 5624'

DEPTH TO BOTTOM: 5624'

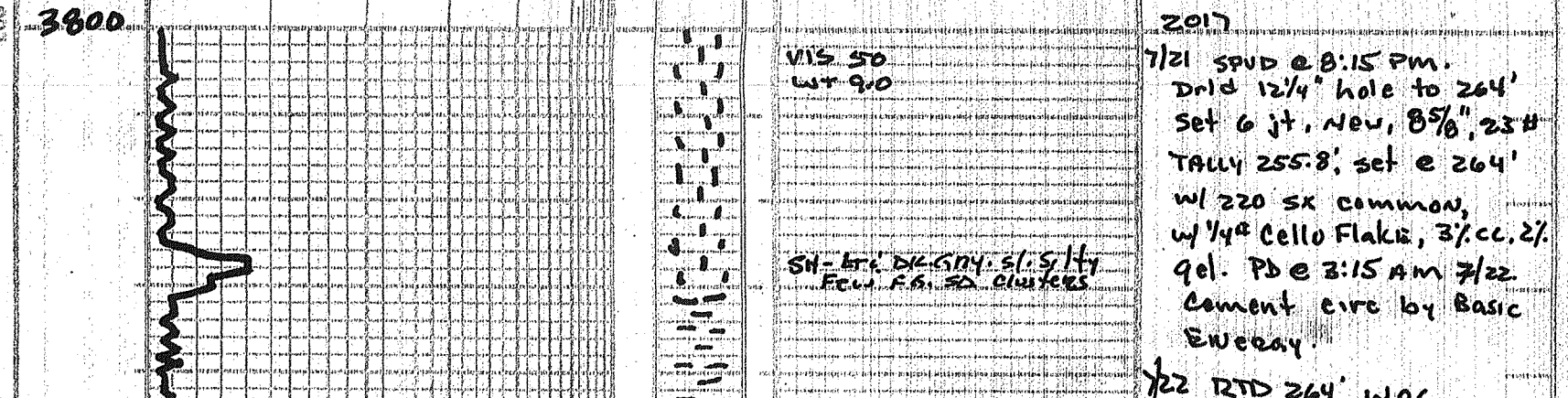
DEPTH TO TOP: 5624'

DEPTH TO BOTTOM: 5624'

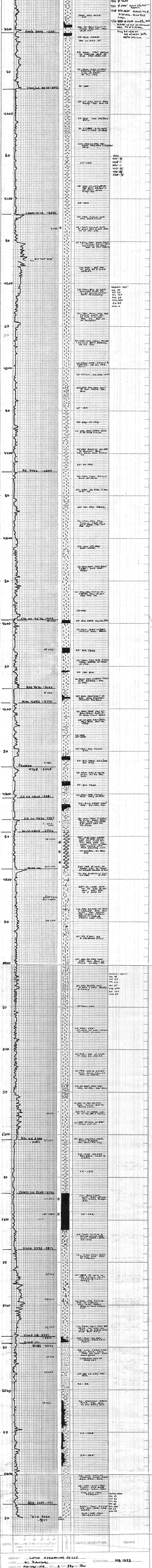
DEPTH TO TOP: 5624'

DEPTH TO BOTTOM: 5624'

REMARKS: Due to structural position of the Miss. chert, shews and elongations, it was recommended that pipe be set to further evaluate the formation through perforations and necessary acid treatments.



SCALE 1" = 100'



COMPANY: LOTUS OPERATING CO. LLC ELEVATION: KS 1523
LEASE: W. BOWMAN SEC. 35 R. 13W
LOCATION: NW-1/4 - NW-1/4 STATE: KS
COUNTY: BARBER