



Scale 1:240 (5"=100') Imperial
Measured Depth Log

Well Name: SWOB #2

Well Id:

Location: 1095' FSL & 970' FWL SEC. 26 - T 18S - R 16W

License Number: 15-165-22145

Region: RUSH CO., KS

Spud Date: 4/13/2017

Drilling Completed: 07-02-17

Surface Coordinates:

Bottom Hole

Coordinates:

Ground Elevation (ft): 1,974'

K.B. Elevation (ft): 1,983'

Logged Interval (ft): 1500 To: TD

Total Depth (ft): 3,736'

Formation: REAGAN SAND

Type of Drilling Fluid: CHEMICAL MUD

Printed by StripLog from WellSight Systems 1-800-447-1534 www.WellSight.com

OPERATOR

Company: BLACKSTONE PETROLEUM LLC

Address: 363 N VASSAR ST
WICHITA, KANSAS 67208

GEOLOGIST

Name: Chris Leiker

Company: Black Stone Petroleum

Address: 2542 North Longfellow wichita KS 67226

ROCK TYPES

- Anhy
- Bent
- Brec
- Cht
- Clyst

- Coal
- Congl
- Dol
- Gyp
- Igne

- Lmst
- Meta
- Mrlst
- Salt
- Shale

- Shcol
- Shgy
- Sltst
- Ss
- Till

ACCESSORIES

FOSSIL

- Algae
- Amph
- Belm
- Bioclst
- Brach
- Bryozoa
- Cephal
- Coral
- Crin
- Echin
- Fish
- Foram
- Fossil
- Gastro
- Oolite
- Ostra
- Pelec
- Pellet
- Pisolite

- Plant
- Strom

MINERAL

- Oolitic
- Anhy
- Arggrn
- Arg
- Bent
- Bit
- Brecfrag
- Calc
- Carb
- Chtdk
- Chtlt
- Dol
- Feldspar
- Ferrpel
- Ferr

- Glau
- Gyp
- Hvymin
- Kaol
- Marl
- Minxl
- Nodule
- Phos
- Pyr
- Salt
- Sandy
- Silt
- Sil
- Sulphur
- Tuff

STRINGER

- Anhy
- Arg
- Bent

- Coal
- Dol
- Gyp
- Ls
- Mrst
- Sltstrg
- Ssstrg

TEXTURE

- Boundst
- Chalky
- Cryxln
- Earthy
- Finexln
- Grainst
- Lithogr
- Microxln
- Mudst
- Packst
- Wackest

OTHER SYMBOLS

POROSITY

- Earthy
- Fenest
- Fracture
- Inter
- Moldic
- Organic
- Pinpoint
- Vuggy

SORTING

- Well
- Moderate
- Poor

ROUNDING

- Rounded
- Subrnd
- Subang
- Angular

OIL SHOW

- Oil
- Spotted
- Ques
- Oil-gas
- Gas
- Tar

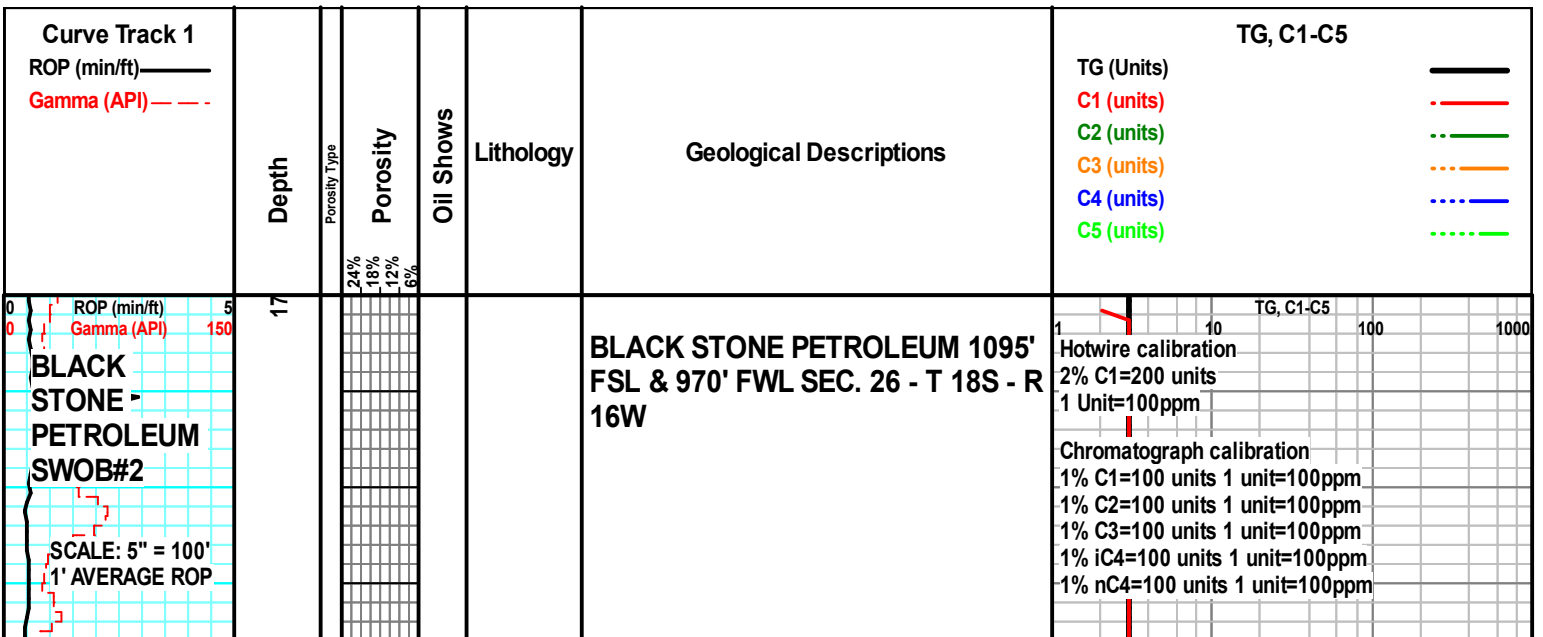
INTERVAL

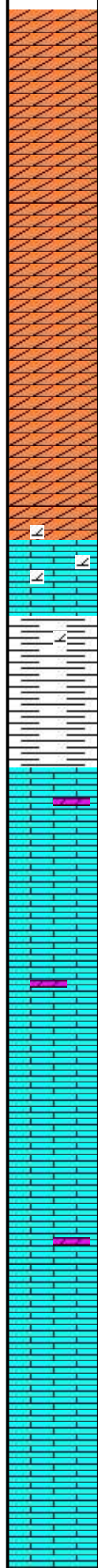
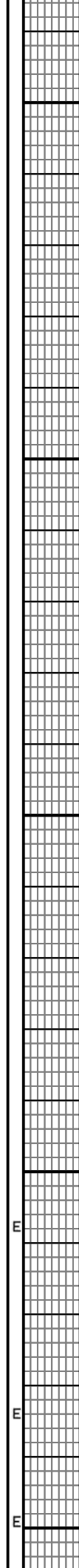
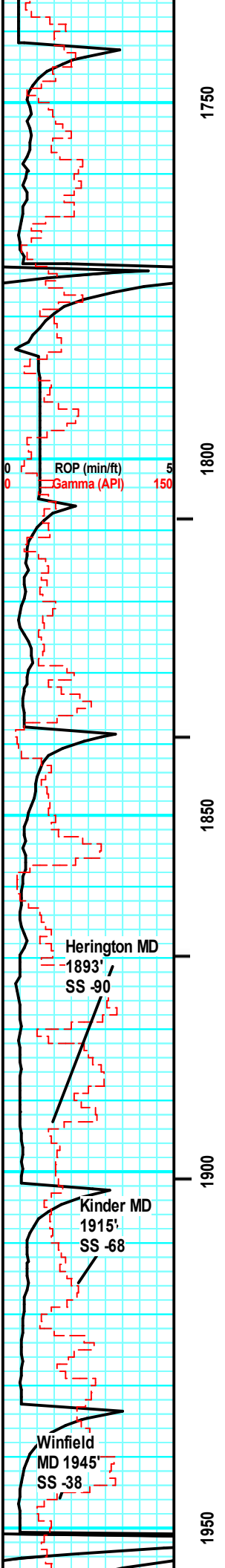
- Core

- Dst

EVENT

- Connection
- Rft
- Sidewall





ANHYDRITE, clr, wht, SHALE red, grey, silty sandy in part,

AA

AA

LIMESTONE, dolomitic, grey, firm, vf - med grn, NO SHOW, NO FLUORESENCE, NO ODOR, (NSFO)

LIMESTONE, dolomitic, grey, firm, very fine - medium grain, NSFO

LIMESTONE, dolomitic, some greyish brown, grey, firm, very fine - medium grain, NSFO

LIMESTONE, dolomite greyish brown, grey, some darker grey pelloids, firm, very fine - medium grain, some pinpoint porosity, NSFO

CFS Sample Limestone and Dolomite as above, with rare dull vello Fluoresence. NO Show. No

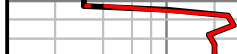
Geologist on location ON 06/29/2017

HW = Black
C1 = Blue
C2 = Yellow
C3 = Green
iC4 = Red
nC4 = Orange

1 10 100 1000
TG, C1-C5

Checked the extractor at flow line no indication of malfunction. Bubbles were present in the antifreeze bowl.

Checked the extractor at flow line no indication of malfunction. Bubbles were present in the antifreeze bowl. Lowered extractor still no change in gas response.



Gas Bubbles, No Odor

LIMESTONE, dolomitic, tan, cream, greyish brown, grey, some darker grey pelloids, firm, very fine - medium grain, sm fossil fragments, some pinpoint porosity, NSFO

LIMESTONE, dolomite greyish brown, grey, some darker grey pelloids, firm, very fine - medium grain, some pinpoint porosity, NSFO

LIMESTONE, dolomite greyish brown, grey, some darker grey pelloids, firm, very fine - medium grain, some pinpoint porosity, NSFO

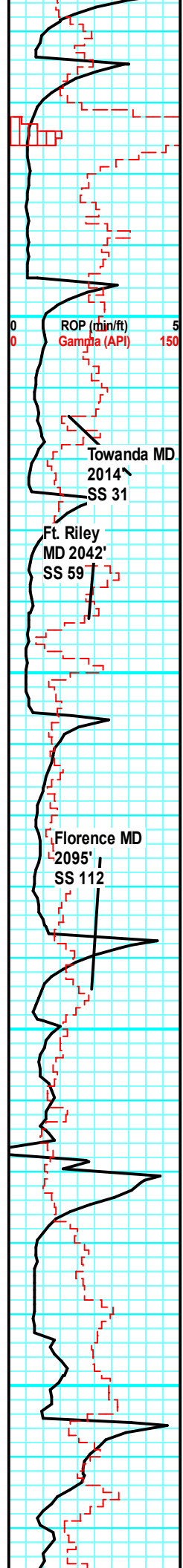
LIMESTONE, dolomite greyish brown, grey, some darker grey pelloids, firm, very fine - medium grain, some pinpoint porosity, NSFO

LIMESTONE, dolomite greyish brown, grey, some darker grey pelloids, firm, very fine - medium grain, some pinpoint porosity, NSFO

Adjusted extractor height and performed trap test. Functioning properly.

TG, C1-C5

1 10 100 1000

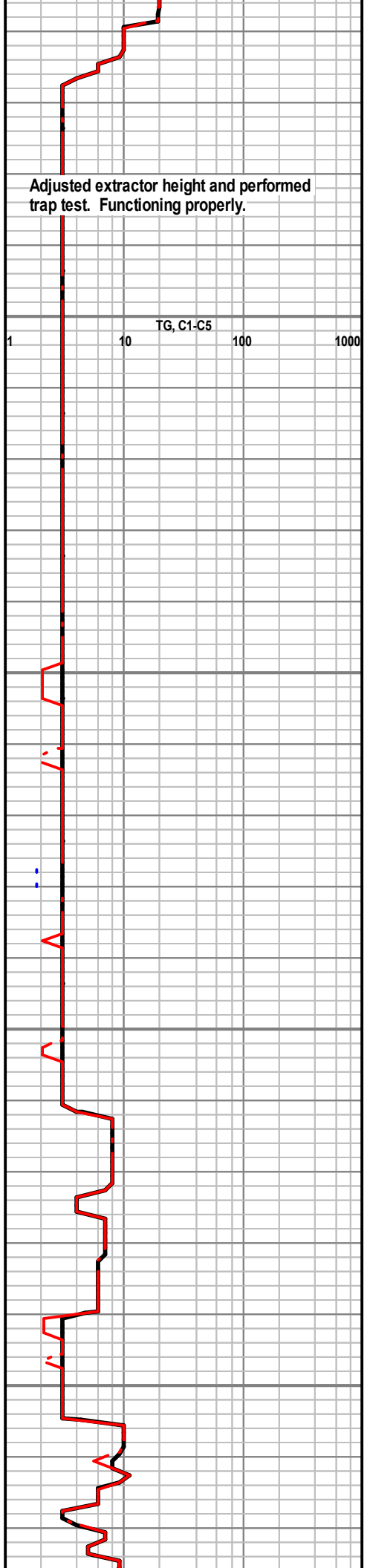
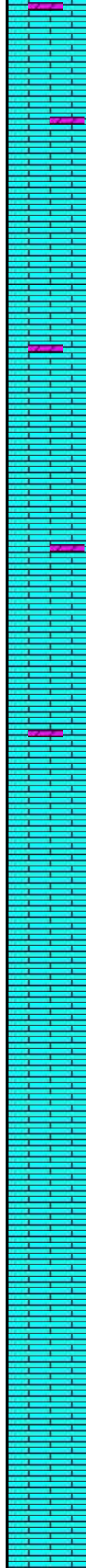
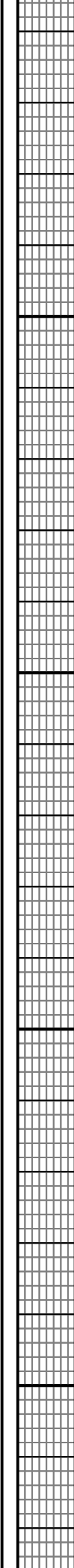


2000

2050

2100

2150



ROP (min/ft) 5
Gamma (API) 150

Towanda MD
2014^
SS 31

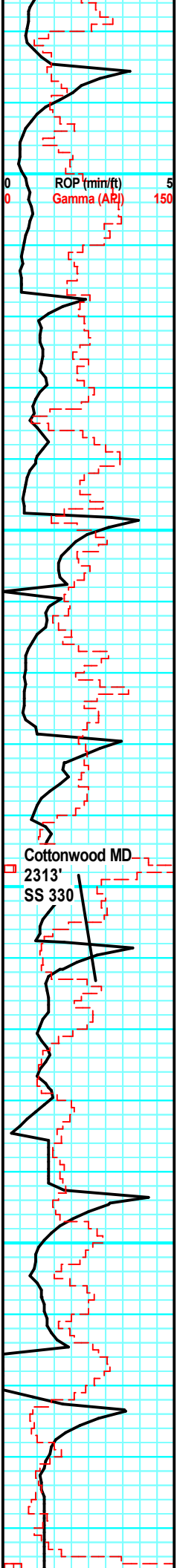
Ft. Riley
MD 2042'
SS 59

Florence MD
2095'
SS 112

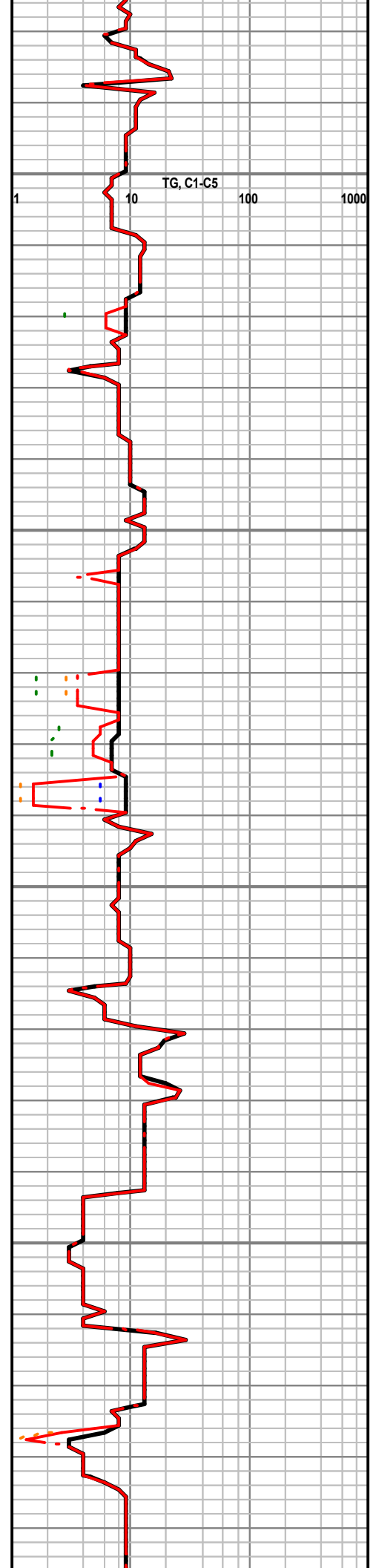
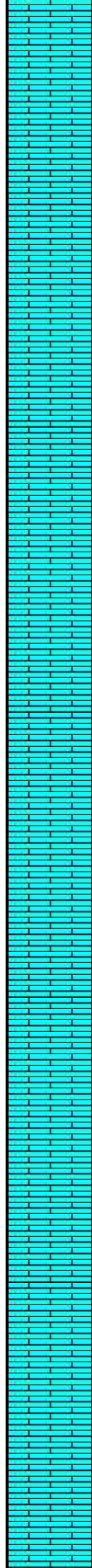
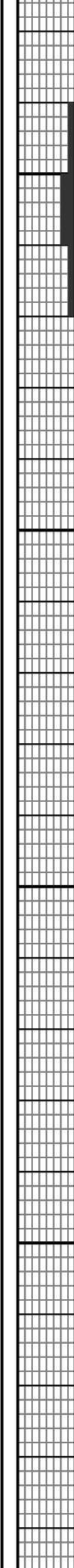
LIMESTONE, dolomite greyish brown, grey, some darker grey pelloids, firm, very fine - medium grain, some pinpoint porosity, NSFO

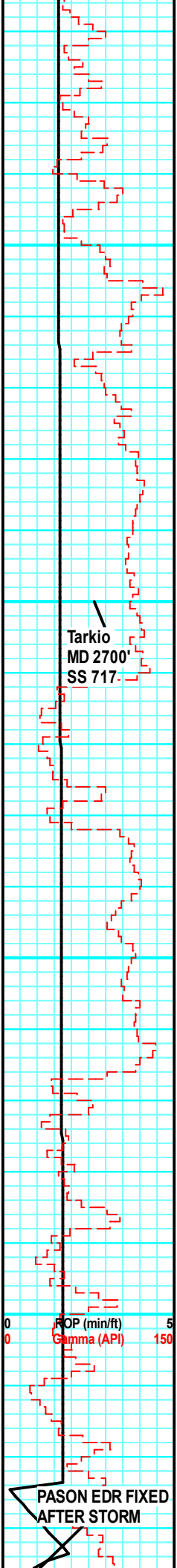
LIMESTONE, dolomite greyish brown, grey, some darker grey pelloids, firm, very fine - medium grain, some pinpoint porosity, NSFO

Limestone: Cream, light to medium tan, light brown, chalky, blocky subblocky, fine crystalline, poor porosity, oil smell.



2200
2250
2300
2350



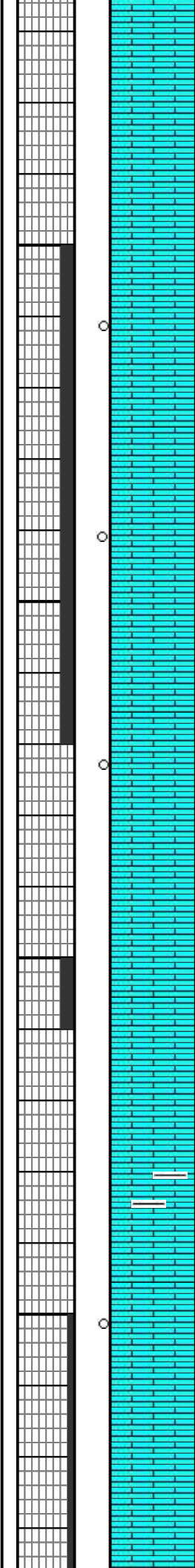


2650
2700
2750
2800

Tarkio
MD 2700'
SS 717

ROP (min/ft) 5
Gamma (API) 150

PASON EDR FIXED
AFTER STORM



Cherty Limestone

Limestone: Cream, light to medium tan, light brown, chalky, blocky subblocky, fine crystalline, good porosity, oil show. Moderate oil smell.

Limestone: Cream, light to medium tan, light brown, chalky, blocky subblocky, fine crystalline, good porosity, oil show.

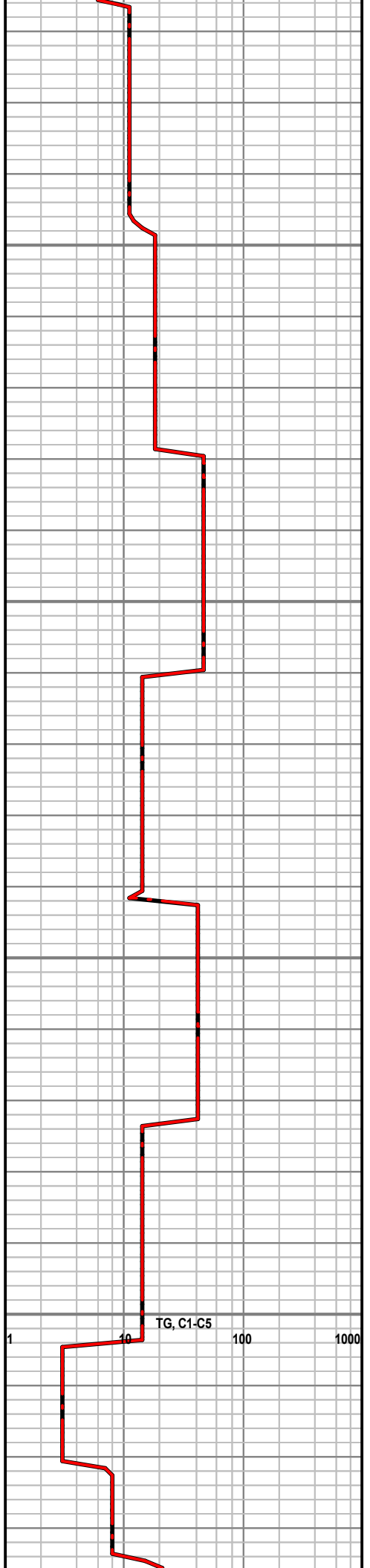
Limestone: Cream, light to medium tan, light brown, chalky, blocky subblocky, fine crystalline, good porosity, oil show.

Limestone, shale

Trash sample

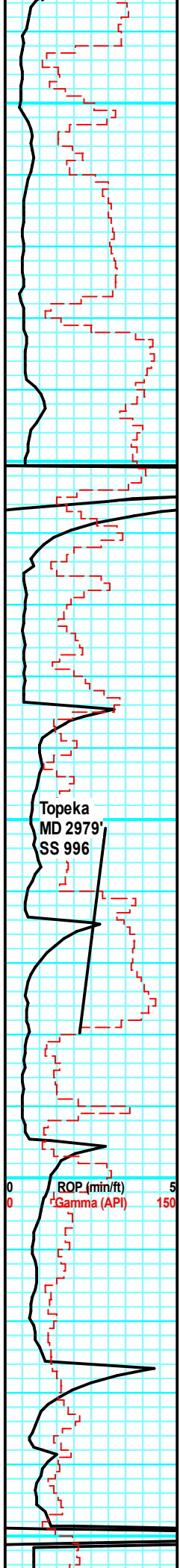
Limestone, soft gummy

Limestone, dead oil



TG, C1-C5

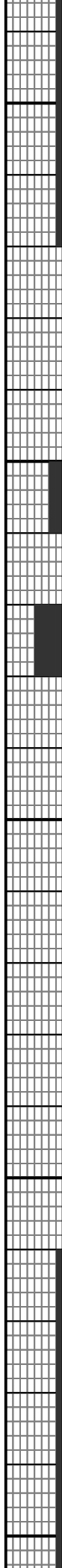
1 10 100 1000



2850
2900
2950
3000
3050

Topeka
MD 2979'
SS 996

ROP (min/ft) 5
Gamma (API) 150



Limestone, dolomitic, greyish brown, grey. no shows

P Limestone, pyrite, oil stain

O Limestone, dead oil stain

Limestone, dolomitic, greyish brown, grey, no show.

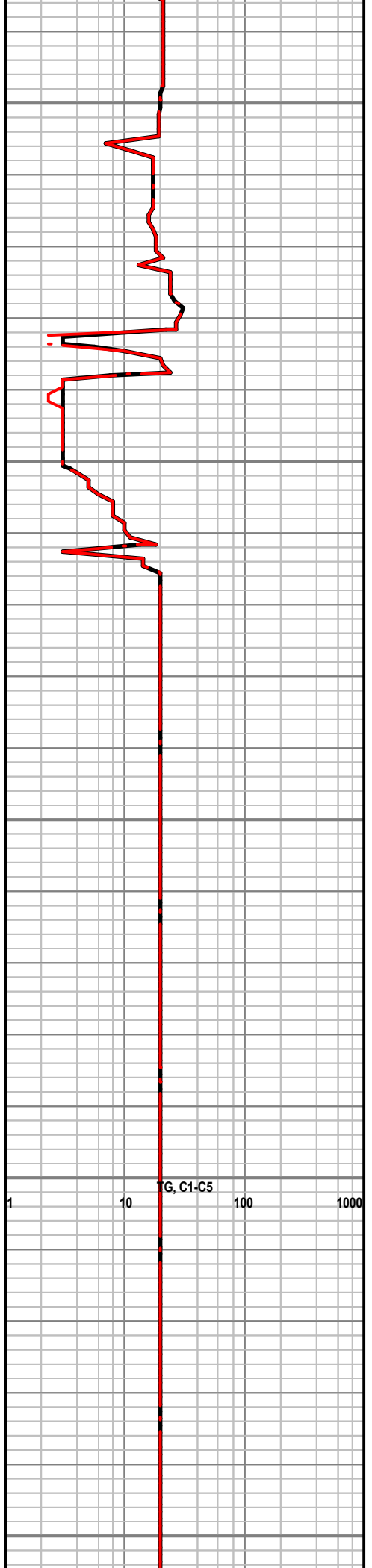
Limestone, grey, cherty

Limestone, dark grey, no shows

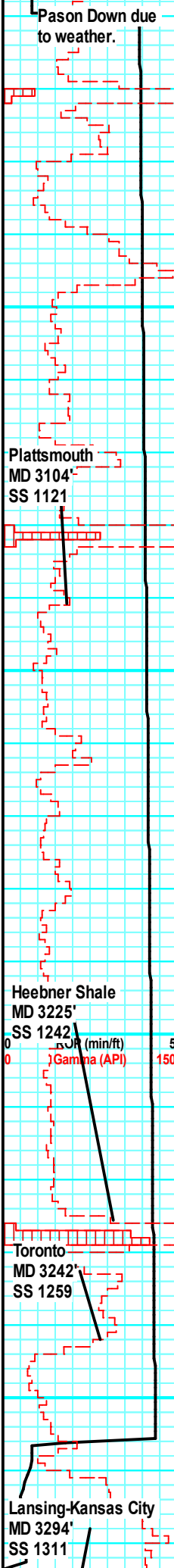
Limestone: Dark grey, chalky, blocky, poor porosity, no show

Limestone: Medium gray tan, chalky, blocky to subblocky, very fine crystalline, moderate rust orange siltstone, trace light gray, dark brown, calcareous sandstone, poor porosity, no show.

Limestone: Light gray, tan, subblocky, fair crystalline, poor porosity, faint oil show.



Pason Down due to weather.



3100

3150

3200

3250

Plattsmouth
MD 3104
SS 1121

Heebner Shale
MD 3225
SS 1242

Toronto
MD 3242
SS 1259

Lansing-Kansas City
MD 3294
SS 1311

Gamma (API) 150
min/ft 5

Limestone: Light gray, cream, off white, block, fair crystalline, poor porosity, faint oil show.

Limestone: Light gray, tan, subblock to blocky, fair crystalline, poor porosity, no show.

Limestone: Light gray, tan, subblocky, fair crystalline, poor porosity, no show.

Limestone: Light gray, tan, subblocky, fair crystalline, poor porosity, no show.

Limestone: Light gray, tan, subblocky, fair crystalline, poor porosity, oil smell.

Limestone: Light gray, tan blocky, fair crystalline, poor porosity, very faint oil show in rock.

Limestone: Light gray, tan blocky, fair crystalline, poor porosity, very faint oil show in rock.

Limestone: Cream, light to medium tan, light brown, chalky, blocky subblocky, fine crystalline, poor porosity, oil show.

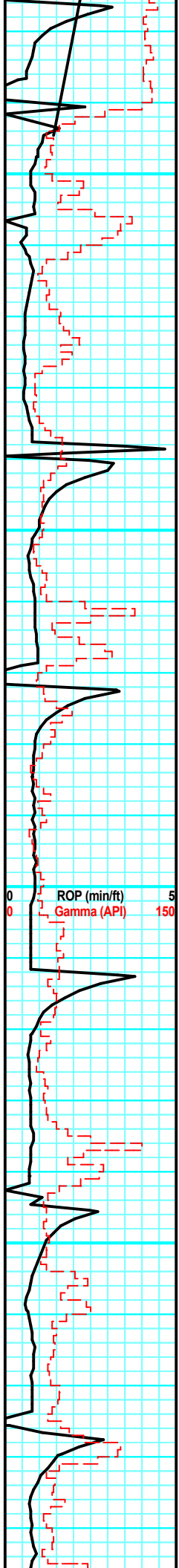
Limestone: Cream, light to medium tan, light brown, chalky, blocky subblocky, fine crystalline, poor porosity, oil show.

Limestone: Light gray, cream, off white, block, fair crystalline, poor porosity, faint oil show.

Limestone: Cream, offwhite, blocky, fair crystalline, poor porosity, faint oil shows.

Limestone: Light gray, offwhite, cream tan, blocky, fair crystalline, fair porosity moderate oil shows.

G, C1-C5
1 10 100 1000

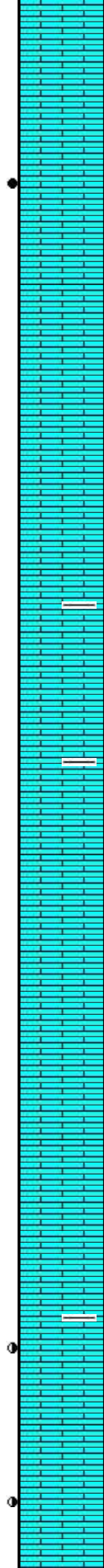


3300

3350

3400

3450



Limestone: Light gray, offwhite, cream tan, blocky, fair crystalline, fair porosity moderate oil shows.

Limestone: Light gray, offwhite, cream tan, blocky, fair crystalline, fair porosity oil shows.

Limestone: Tan cream, light brown, subblocky, fine crystalline, poor porosity, no oil show.

Limestone: Offwhite, light gray, blocky, fair crystalline, poor porosity, faint oil shows.

Limestone: Offwhite, light gray, blocky, fair crystalline, poor porosity, faint oil shows.

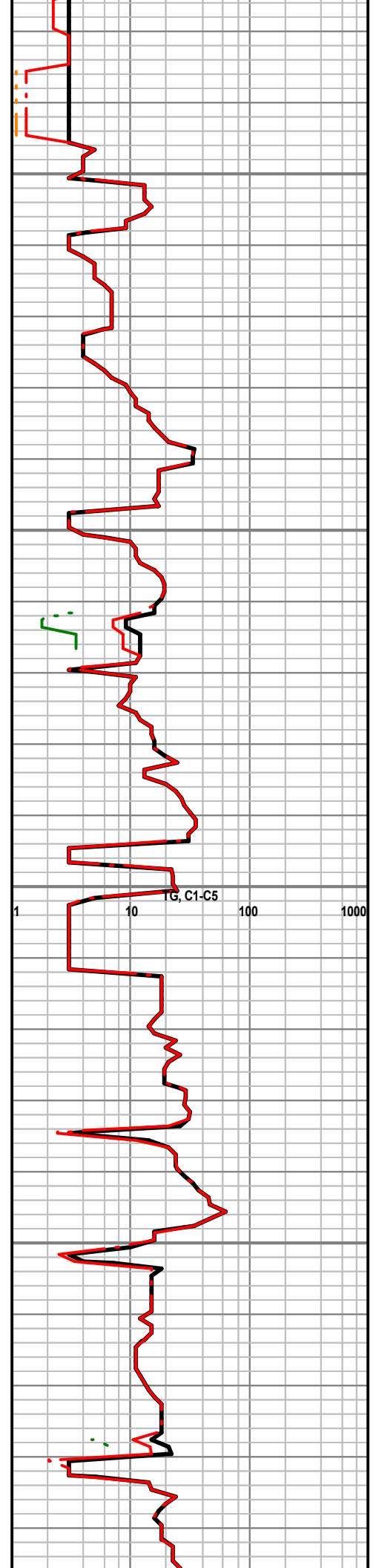
Limestone: Offwhite, light gray, blocky, fair crystalline, poor porosity, faint oil shows.

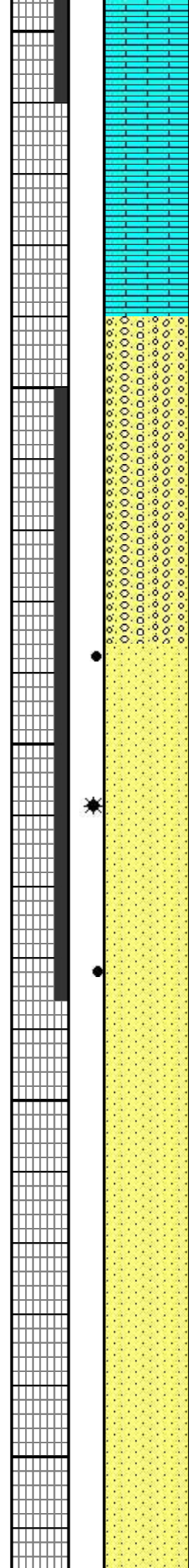
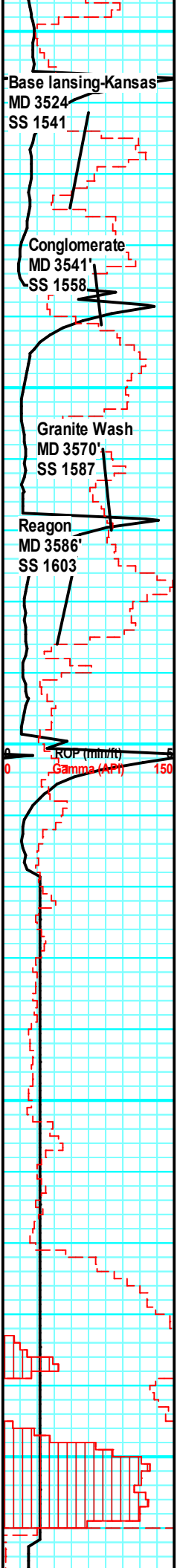
Limestone: Offwhite, light gray, blocky, fair crystalline, poor porosity, faint oil shows.

Limestone: Offwhite, light gray, blocky, fair crystalline, poor porosity, faint oil shows.

Limestone: Cream, light to medium tan, light brown, , fine crystalline, poor porosity, oil show.

Limestone: Cream, light to medium tan, light brown, chalky, fine crystalline, poor porosity, oil show.





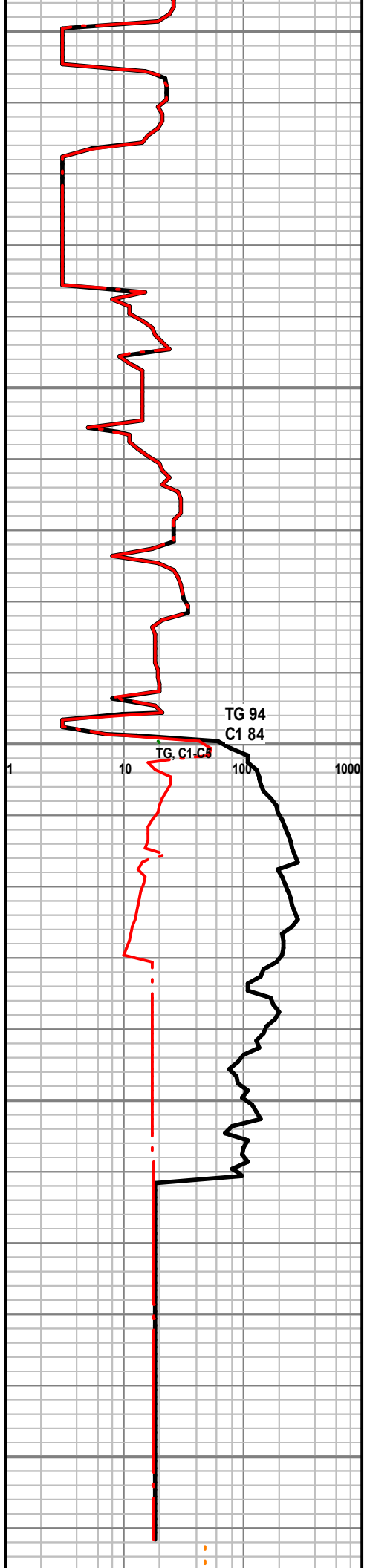
Limestone: Light tan to tan, gray, faint porosity, no odor no show.

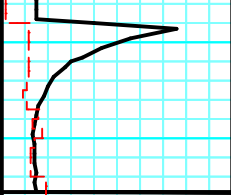
Sandstone, clear, to white, very fine grain grain size increasing with depth, some brown staining, some bright yellow fluorescence, good intergranular porosity, questionable faint petroleum odor, slow lazy cut, free oil when cluster crushed

Sandstone, clear, to white, very fine grain grain size increasing with depth, some brown staining, some bright yellow fluorescence, good intergranular porosity, strong petroleum odor, slow lazy cut, free oil when cluster crushed

Sandstone, clear, to white, very fine grain grain size increasing with depth, some brown staining, some bright yellow fluorescence, good intergranular porosity, strong petroleum odor, slow lazy cut, moderate when cluster crushed

Sandstone, clear, to white, very fine grain grain size increasing with depth, some brown staining, some bright yellow fluorescence, good intergranular porosity, strong petroleum odor, slow lazy cut, moderate when cluster crushed



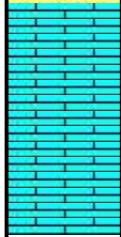
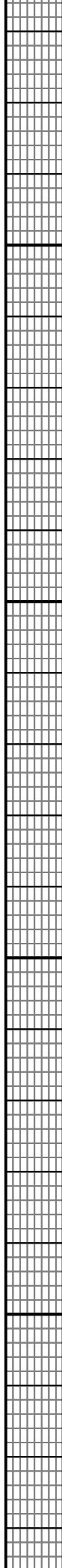


3750

3800

3850

3900



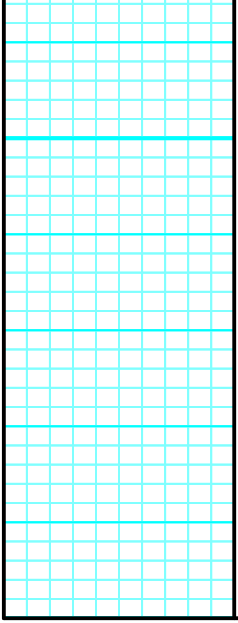
Limestone: tan, light gray, blocky, no smell, no show.

RTD 3736' On 07-02-17

ROP (min/ft) 5
Gamma (API) 150

TG, C1-C5
1 10 100 1000





00

3950

