



Scale 1:240 (5"=100') Imperial
Measured Depth Log

Well Name: SWOB #3
Well Id: 564' FSL & 2310 FWL SEC. 26-TWP 18 S -RGE 16 W
Location: 15-165-22147
License Number: 15-165-22145
Spud Date: 7/5/2017
Surface Coordinates:
Region: RUSH CO., KS
Drilling Completed: 07/09/17

Bottom Hole
Coordinates:
Ground Elevation (ft): 1941' K.B. Elevation (ft): 1950'
Logged Interval (ft): 1500 To: TD Total Depth (ft): 3644'
Formation: REAGAN SAND
Type of Drilling Fluid: CHEMICAL MUD

Printed by StripLog from WellSight Systems 1-800-447-1534 www.WellSight.com

OPERATOR

Company: BLACKSTONE PETROLEUM LLC
Address: 363 N VASSAR ST
WICHITA, KANSAS 67208

GEOLOGIST

Name: Chris Leiker
Company: Black Stone Petroleum
Address: 2542 North Longfellow wichita KS 67226

ROCK TYPES

- Anhy
- Bent
- Brec
- Cht
- Clyst

- Coal
- Congl
- Dol
- Gyp
- Igne

- Lmst
- Meta
- Mrlst
- Salt
- Shale

- Shcol
- Shgy
- Sltst
- Ss
- Till

ACCESSORIES

FOSSIL

- Algae
- Amph
- Belm
- Bioclst
- Brach
- Bryozoa
- Cephal
- Coral
- Crin
- Echin
- Fish
- Foram
- Fossil
- Gastro
- Oolite
- Ostra
- Pelec
- Pellet
- Pisolite

- Plant
- Strom

MINERAL

- Oolitic
- Anhy
- Arggrn
- Arg
- Bent
- Bit
- Brecfrag
- Calc
- Carb
- Chtdk
- Chtlt
- Dol
- Feldspar
- Ferrpel
- Ferr

- Glau
- Gyp
- Hvymin
- Kaol
- Marl
- Minxl
- Nodule
- Phos
- Pyr
- Salt
- Sandy
- Silt
- Sil
- Sulphur
- Tuff

STRINGER

- Anhy
- Arg
- Bent

- Coal
- Dol
- Gyp
- Ls
- Mrst
- Sltstrg
- Ssstrg

TEXTURE

- Boundst
- Chalky
- Cryxln
- Earthy
- Finexln
- Grainst
- Lithogr
- Microxln
- Mudst
- Packst
- Wackest

OTHER SYMBOLS

POROSITY

- Earthy
- Fenest
- Fracture
- Inter
- Moldic
- Organic
- Pinpoint
- Vuggy

SORTING

- Well
- Moderate
- Poor

ROUNDING

- Rounded
- Subrnd
- Subang
- Angular

OIL SHOW

- Oil
- Spotted
- Ques
- Oil-gas
- Gas
- Tar

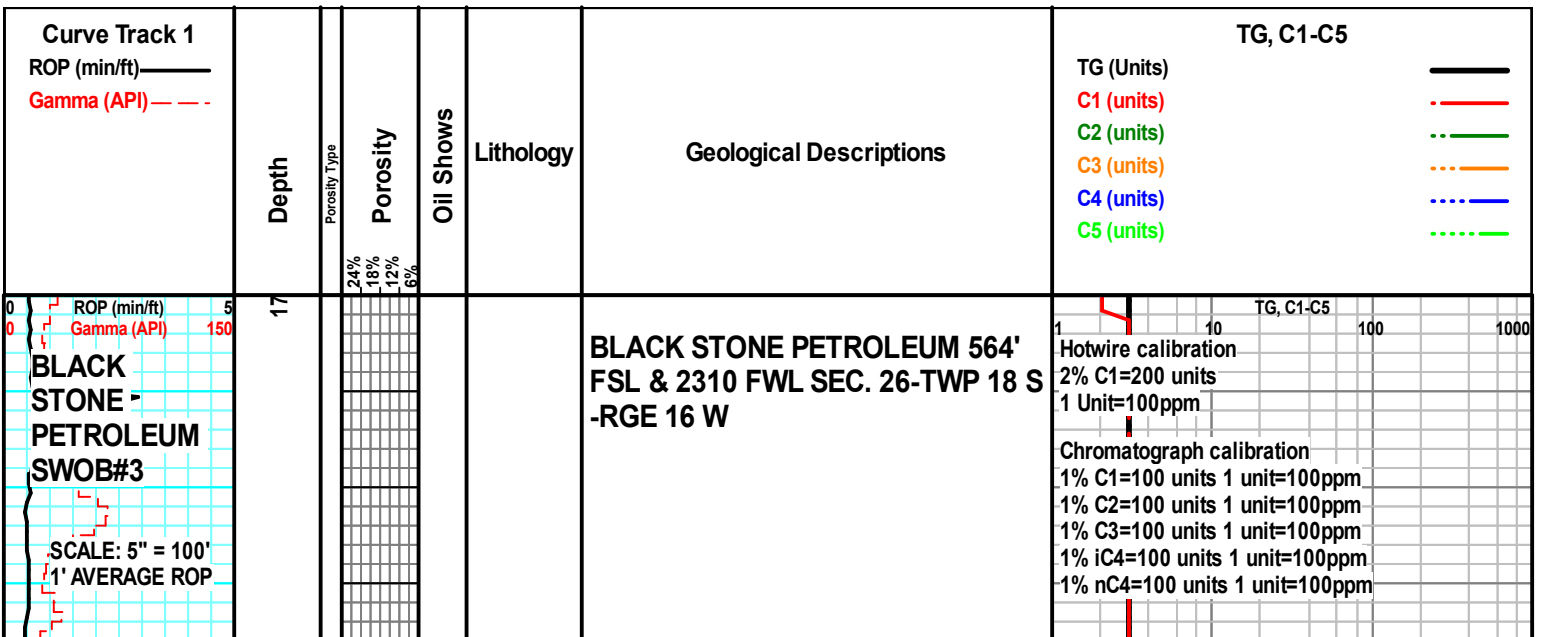
INTERVAL

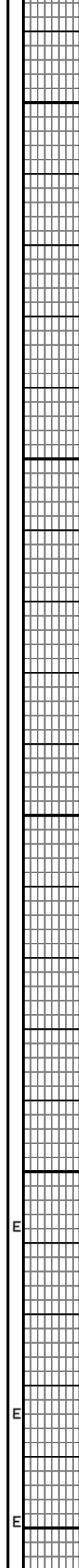
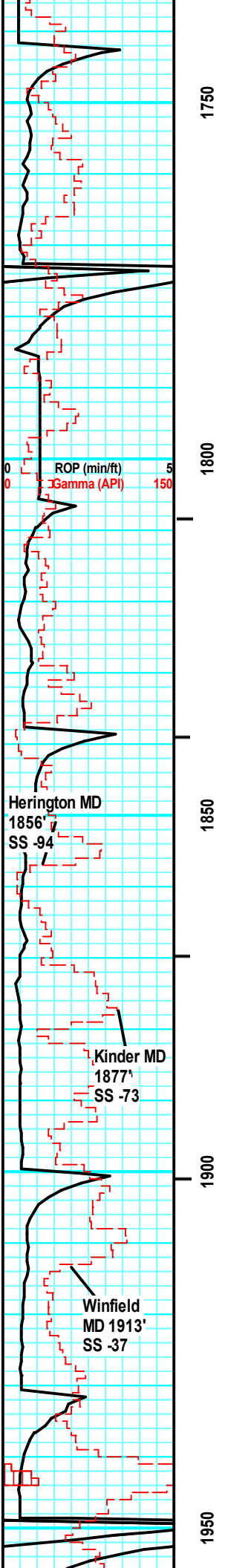
- Core

- Dst

EVENT

- Connection
- Rft
- Sidewall





ANHYDRITE, clr, wht, SHALE red, grey, silty sandy in part,

AA

AA

LIMESTONE, dolomitic, grey, firm, vf - med grn, NO SHOW, NO FLUORESENCE, NO ODOR,

LIMESTONE, dolomitic, grey, firm, very fine - medium grain, NSFO

LIMESTONE, dolomitic, some greyish brown, grey, firm, very fine - medium grain, NSFO

LIMESTONE, dolomite greyish brown, grey, some darker grey pelloids, firm, very fine - medium grain, some pinpoint porosity, NSFO

CFS Sample Limestone and Dolomite as above, with rare dull vello Fluoresence. NO Show. No

Geologist on location ON 07/6/2017

HW = Black
C1 = Blue
C2 = Yellow
C3 = Green
iC4 = Red
nC4 = Orange

1 10 TG, C1-C5 100 1000

Checked the extractor at flow line no indication of malfunction. Bubbles were present in the antifreeze bowl.

Checked the extractor at flow line no indication of malfunction. Bubbles were present in the antifreeze bowl. Lowered extractor still no change in gas response.

Adjusted extractor height and performed trap test. Functioning properly.

Gas Bubbles, No Odor

LIMESTONE, dolomitic, tan, cream, greyish brown, grey, some darker grey pelloids, firm, very fine - medium grain, sm fossil fragments, some pinpoint porosity, NSFO

LIMESTONE, dolomite greyish brown, grey, some darker grey pelloids, firm, very fine - medium grain, some pinpoint porosity, NSFO

LIMESTONE, dolomite greyish brown, grey, some darker grey pelloids, firm, very fine - medium grain, some pinpoint porosity, NSFO

LIMESTONE, dolomite greyish brown, grey, some darker grey pelloids, firm, very fine - medium grain, some pinpoint porosity, NSFO

LIMESTONE, dolomite greyish brown, grey, some darker grey pelloids, firm, very fine - medium grain, some pinpoint porosity, NSFO

TG, C1-C5

1 10 100 1000

2000

2050

2100

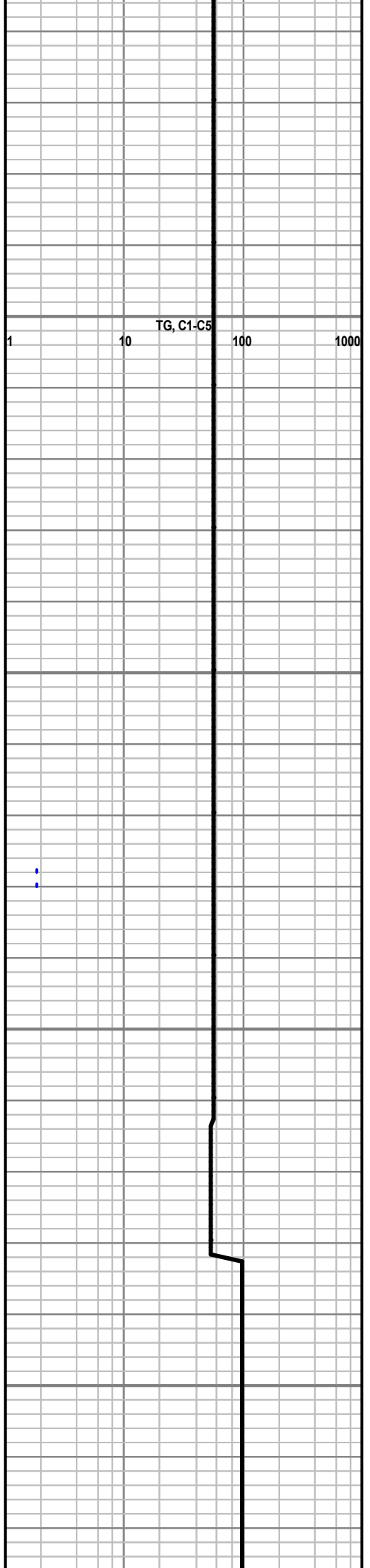
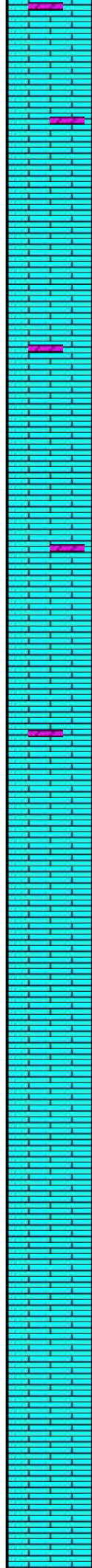
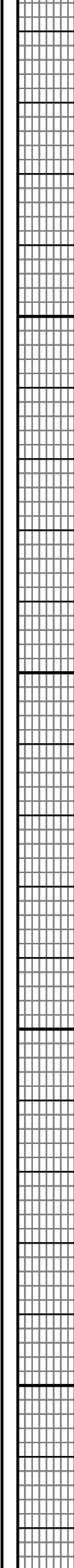
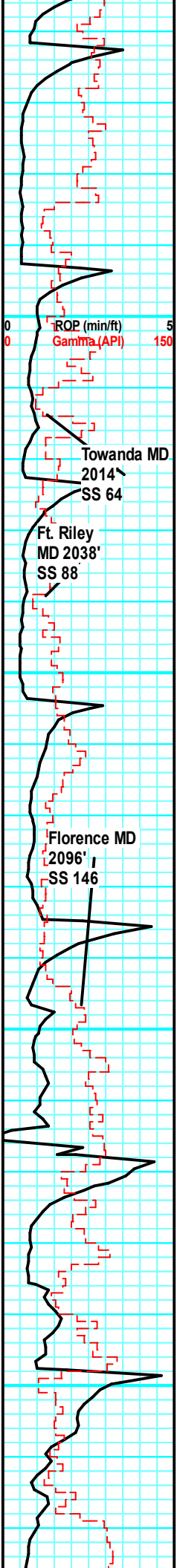
2150

ROP (min/ft) 5
Gamma (API) 150

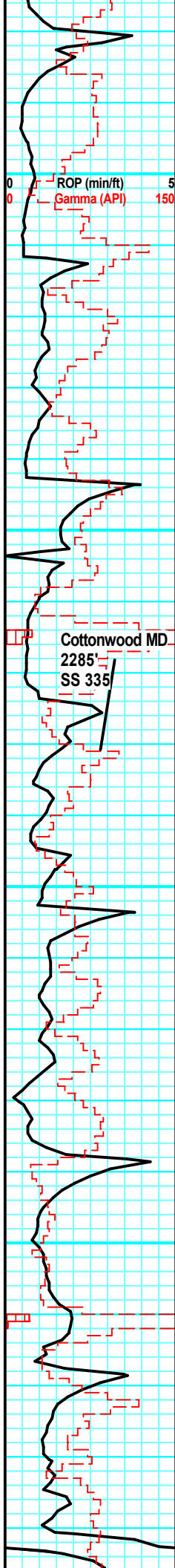
Towanda MD
2014
SS 64

Ft. Riley
MD 2038'
SS 88

Florence MD
2096'
SS 146



LIMESTONE, dolomite greyish brown, grey, some darker grey pelloids, firm, very fine - medium grain, some pinpoint porosity, NSFO

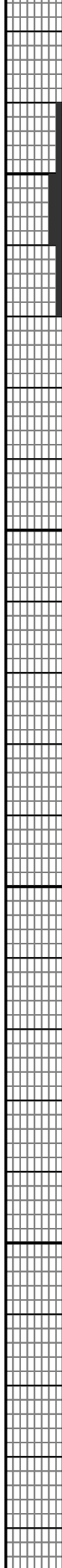


2200

2250

2300

2350



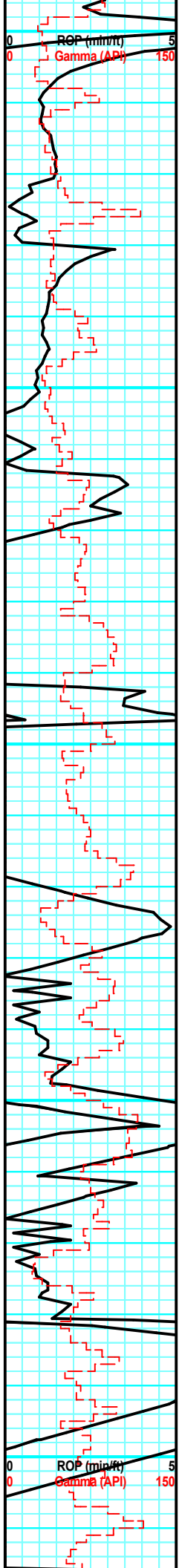
LIMESTONE, dolomite greyish brown, grey, some darker grey pelloids, firm, very fine - medium grain, some pinpoint porosity, NSFO

Limestone: Cream, light to medium tan, light brown, chalky, blocky subblocky, fine crystalline, poor porosity, oil smell.

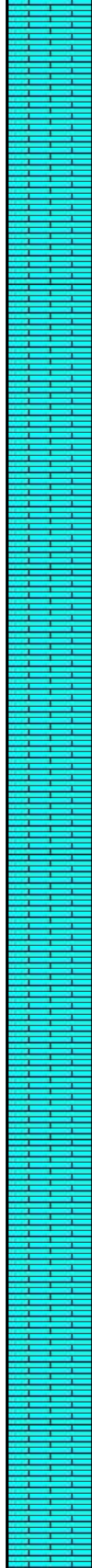
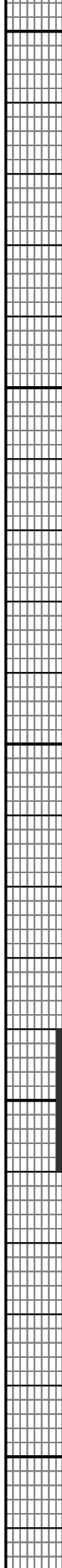
TG, C1-C5
1 10 100 1000

Cottonwood MD.
2285'
SS 335'

•



2400
2450
2500
2550
2600

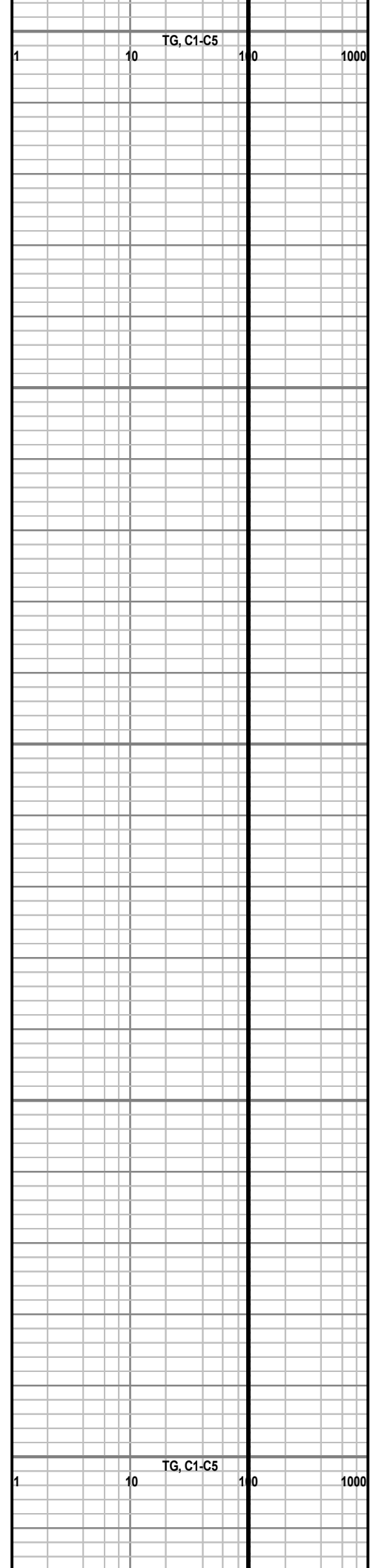


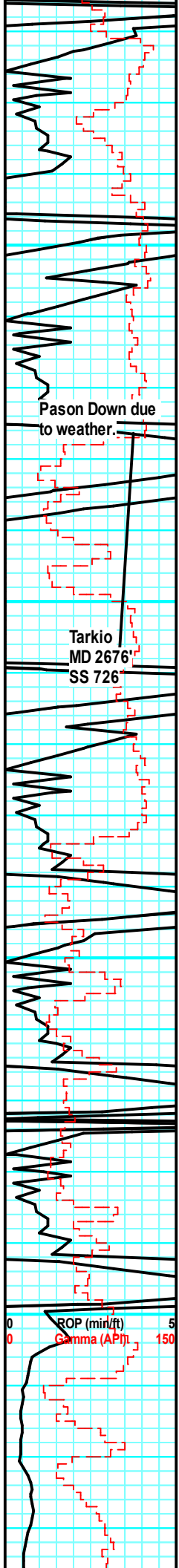
Limestone: Cream, light to medium tan, light brown, chalky, blocky subblocky, fine crystalline, poor porosity, oil show.

Limestone: Cream, light to medium tan, light brown, chalky, blocky subblocky, fine crystalline, poor porosity, oil show.

Limestone, Shale stained lime, no shows

Trash sample





2650

2700

2750

2800

Pason Down due to weather.

Tarkio
MD 2676'
SS 726'

Cherty Limestone

Limestone: Cream, light to medium tan, light brown, chalky, blocky subblocky, fine crystalline, good porosity, oil show. Moderate oil smell.

Limestone: Cream, light to medium tan, light brown, chalky, blocky subblocky, fine crystalline, good porosity, oil show.

Limestone: Cream, light to medium tan, light brown, chalky, blocky subblocky, fine crystalline, good porosity, oil show.

Limestone, shale

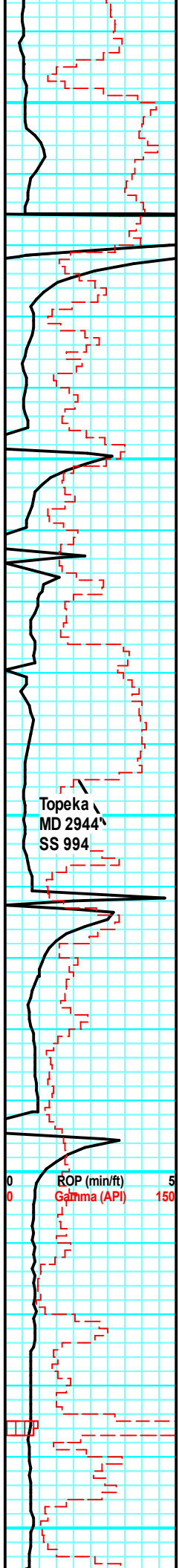
Trash sample

Limestone, soft gummy

Limestone, dead oil

TG, C1-C5

1 10 100 1000



2850

2900

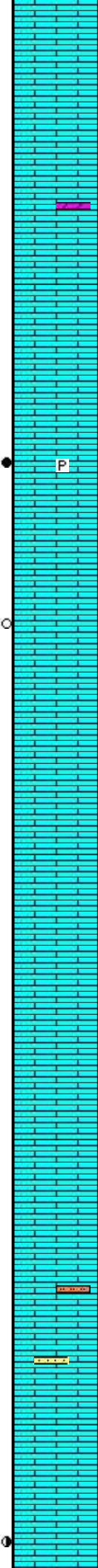
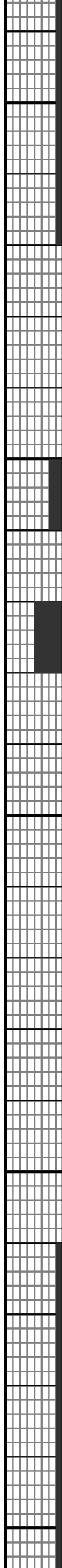
2950

3000

3050

Topeka
MD 2944
SS 994

ROP (min/ft) 5
Gamma (API) 150



Limestone, dolomitic, greyish brown, grey. no shows

P Limestone, pyrite, oil stain

O Limestone, dead oil stain

Limestone, dolomitic, greyish brown, grey, no show.

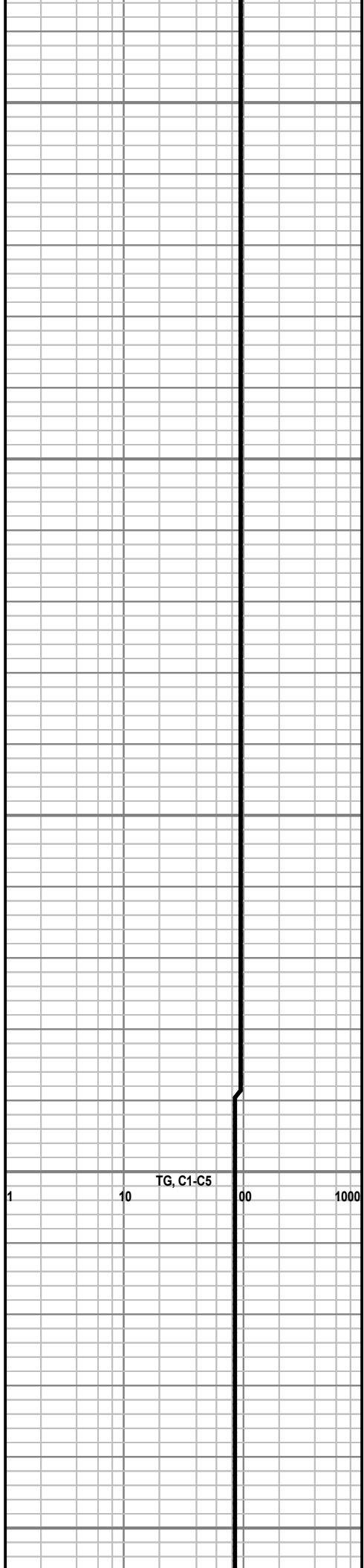
Limestone, grey, cherty

Limestone, dark grey, no shows

Limestone: Dark grey, chalky, blocky, poor porosity, no show

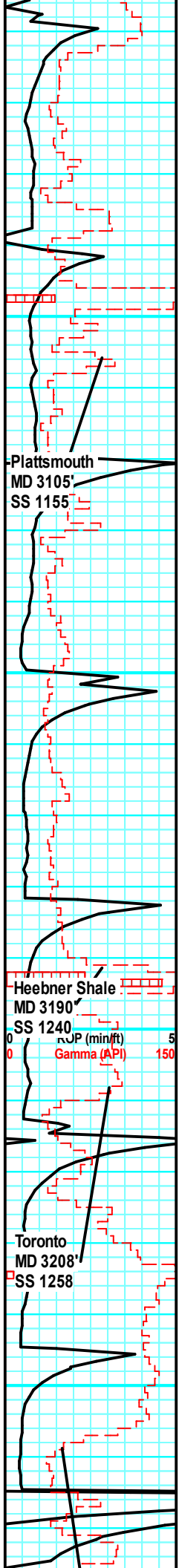
Limestone: Medium gray tan, chalky, blocky to subblocky, very fine crystalline, moderate rust orange siltstone, trace light gray, dark brown, calcareous sandstone, poor porosity, no show.

Limestone: Light gray, tan, subblocky, fair crystalline, poor porosity, faint oil show.



TG, C1-C5

1 10 100 1000

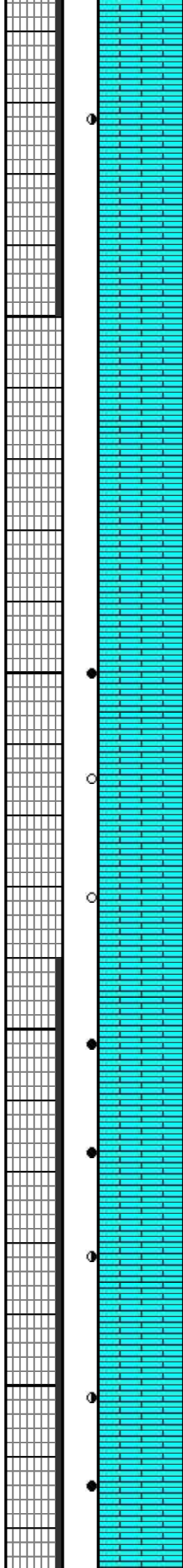


3100

3150

3200

3250



Limestone: Light gray, cream, off white, blocky, fair crystalline, poor porosity, faint oil show.

Limestone: Light gray, tan, subblocky to blocky, fair crystalline, poor porosity, no show.

Limestone: Light gray, tan, subblocky, fair crystalline, poor porosity, no show.

Limestone: Light gray, tan, subblocky, fair crystalline, poor porosity, no show.

Limestone: Light gray, tan, subblocky, fair crystalline, poor porosity, oil smell.

Limestone: Light gray, tan blocky, fair crystalline, poor porosity, very faint oil show in rock.

Limestone: Light gray, tan blocky, fair crystalline, poor porosity, very faint oil show in rock.

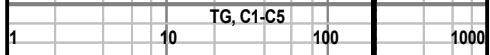
Limestone: Cream, light to medium tan, light brown, chalky, blocky subblocky, fine crystalline, poor porosity, oil show.

Limestone: Cream, light to medium tan, light brown, chalky, blocky subblocky, fine crystalline, poor porosity, oil show.

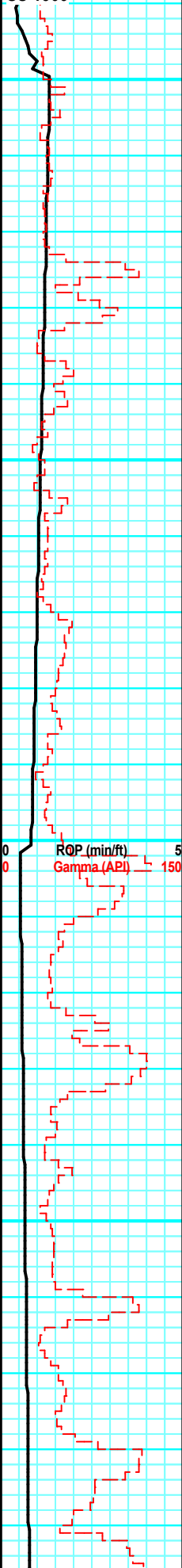
Limestone: Light gray, cream, off white, blocky, fair crystalline, poor porosity, faint oil show.

Limestone: Cream, offwhite, blocky, fair crystalline, poor porosity, faint oil shows.

Limestone: Light gray, offwhite, cream tan, blocky, fair crystalline, fair porosity moderate oil shows.



Lansing-Kansas City
MD 3259
SS 1309



3300

3350

3400

3450

Limestone: Light gray, offwhite, cream tan, blocky, fair crystalline, fair porosity moderate oil shows.

Limestone: Light gray, offwhite, cream tan, blocky, fair crystalline, fair porosity oil shows.

Limestone: Tan cream, light brown, subblocky, fine crystalline, poor porosity, no oil show.

Limestone: Offwhite, light gray, blocky, fair crystalline, poor porosity, faint oil shows.

Limestone: Offwhite, light gray, blocky, fair crystalline, poor porosity, faint oil shows.

Limestone: Offwhite, light gray, blocky, fair crystalline, poor porosity, faint oil shows.

Limestone: Offwhite, light gray, blocky, fair crystalline, poor porosity, faint oil shows.

Limestone: Offwhite, light gray, blocky, fair crystalline, poor porosity, faint oil shows.

Limestone: Cream, light to medium tan, light brown, fine crystalline, poor porosity, oil show.

Limestone: Cream, light to medium tan, light brown, chalky, fine crystalline, poor porosity, oil show.

TG, C1-C5
1 10 100 1000

