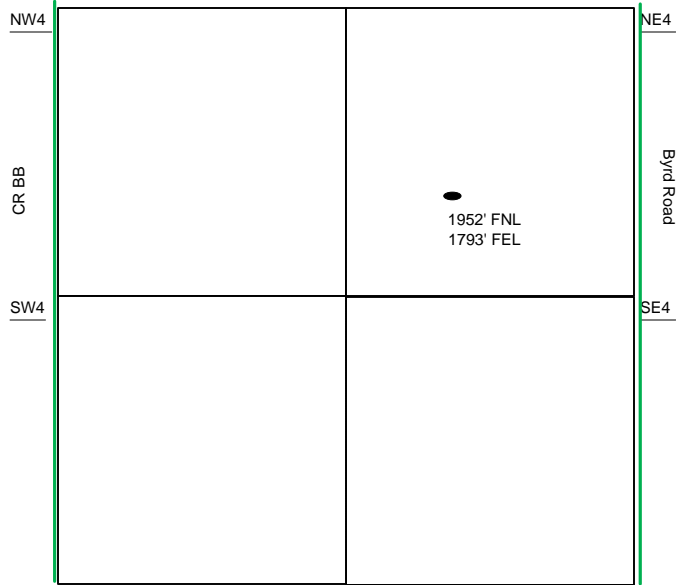
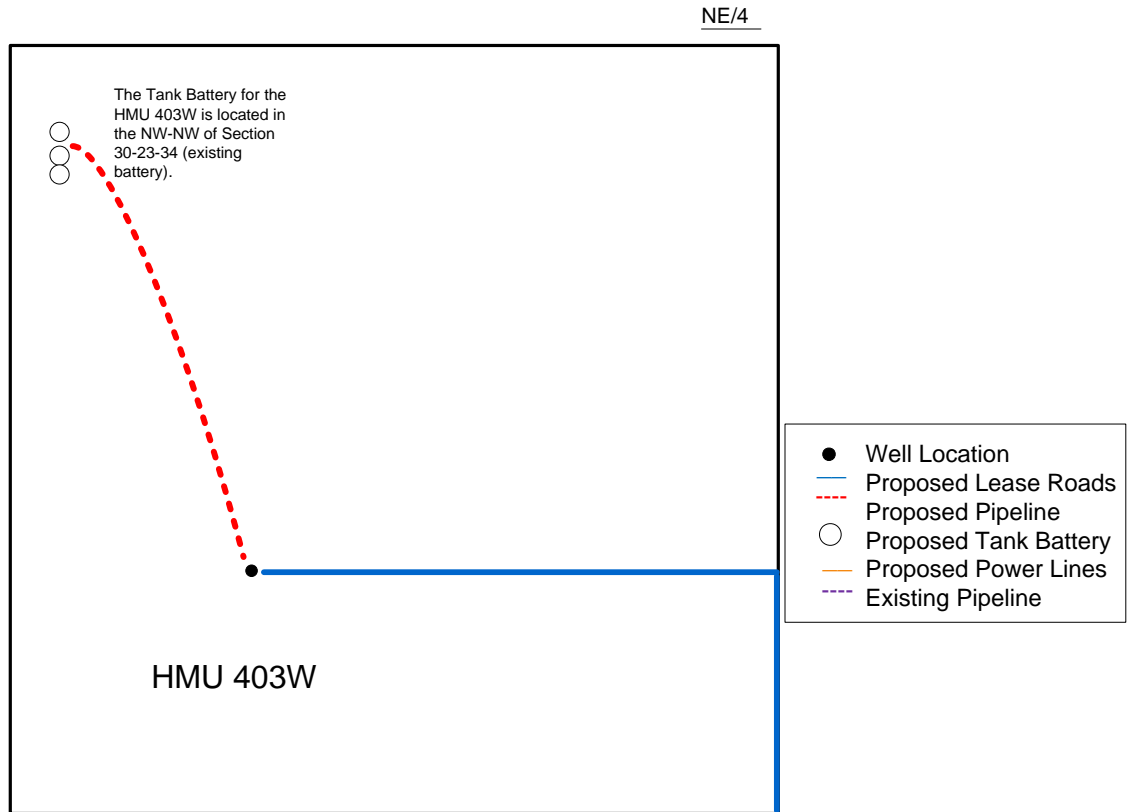


Proposed Plan of Construction
 HMU 403W
 Sec 30 T23S-R34W
 Finney County, KS



Sec 30 – T23S – R34W



Proposed Details of
 NE/4 Sec 30 – T23S – R34W

Proposed Site Diagram
 HMU 403W
 November 13, 2017

Note-Drawing **Not** to Scale