

Customer Name SUENMAUR EXPLORATION  
 Well Name GODFREY 1-32  
 Job Type Plug & Abandon

District Liberal  
 Supervisor ALDO ESPINOZA  
 Engineer LENNY BAEZA

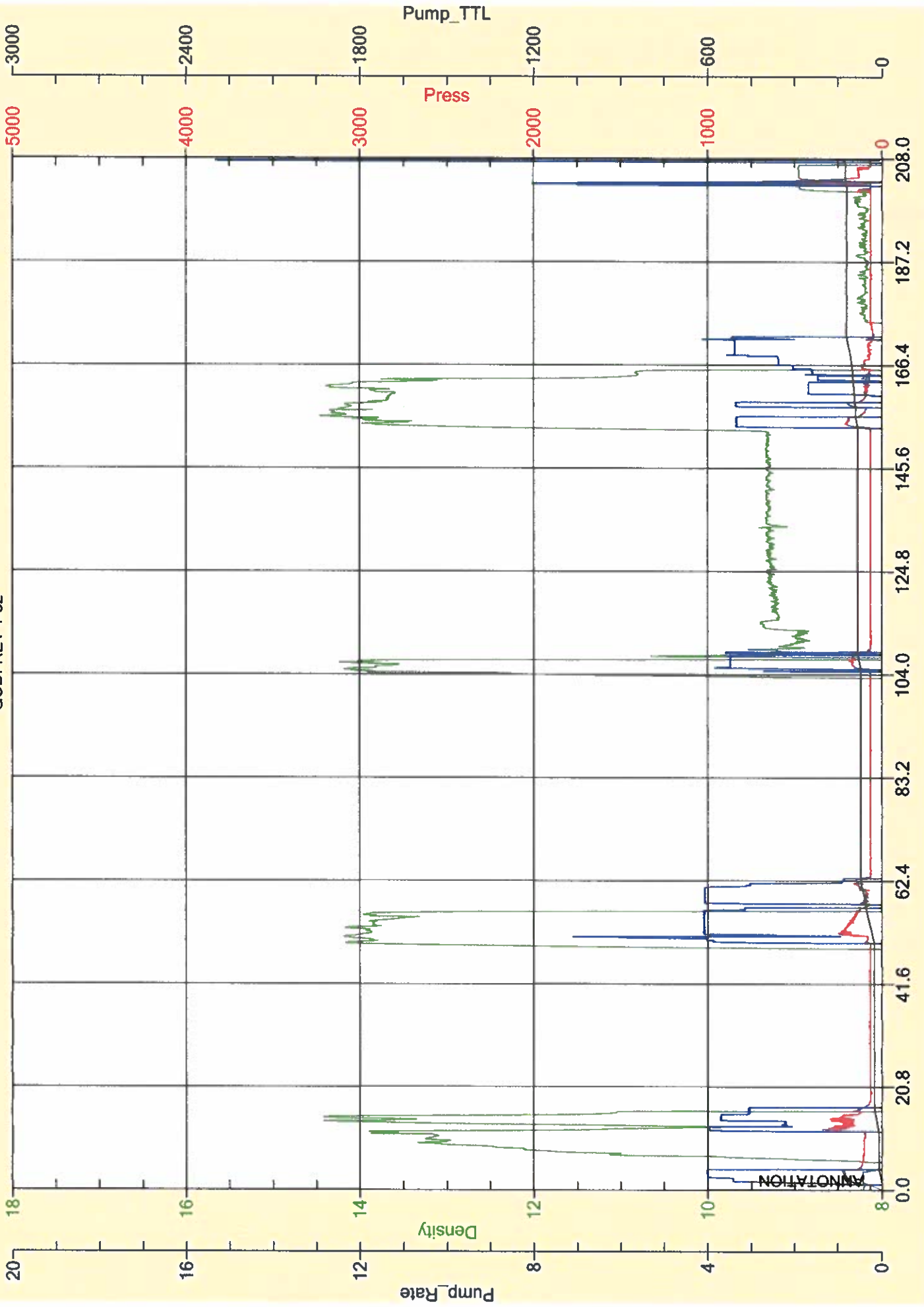


Seq No.	Start Date/Time	Category	Event	Equipment	Event ID	Density (lb/gal)	Pump Rate (bpm)	Pump Vol (bbis)	Pipe Pressure (gsl)	Comments
1	11/4/2017 14:00	Mobilization	Arrive on Location	Cement Pump Truck	48					ON LOCATION, SPOT TRUCKS
2	230PM	Operational	Rig Up	Cement Pump Truck	50					RIG UP
3	245PM	Operational	Safety Meeting		53					SAFETY MEETING
4	255PM		1ST PLUG			13.8	3	52.7	100	1ST PLUG @ 2550FT 50 SK, 10 BBL WATER, 12.7 BBL SLURRY @ 13.8# FOLLOWED BY 2 BBL WATER, AND 28 BBL MUD
5	312PM									RIG CREW LAY DOWN PIPE
6										
7	340PM		2ND PLUG			13.8	3	42.9	90	2ND PLUG @ 1700 FT 100 SK, 25.4 BBL SLURRY AND 17.5 BBL DISPLACEMENT
8	355PM									RIG CREW LAY DOWN PIPE
9										
10	432PM		3RD PLUG			13.8	3	14.4	50	3RD PLUG @ 350 FT, 50SK, 12.7 BBL SLURRY @ 13.8# 1.7 BBL DISPLACEMENT
11										LAY DOWN PIPE
12										
13	530PM		4TH PLUG			13.8	2	2.5	20	4TH PLUG FROM 40 FT TO SURFACE, 10 SK, 2.5 BBL SLURRY @ 13.8#
14										
15	540PM		RAT & MOUSE PLUG			13.8	2	11.4	0	RAT & MOUSE HOLES, 45 SK, 11.4 BBL SLURRY @ 13.8#
16	550PM		WASH							WASH PUMPING LINES TO PIT
17	600PM		RIG DOWN		73					RIG DOWN
18	700PM									LEAVE LOCATION
19										THANKS
20										
21										
22										
23										



# SUEMOUR EXPLORATION

GODFREY 1-32





**CEMENT MIXING WATER GUIDELINES**

Company Name: **SUEMAUR EXPLORATION**

Lease Name: **GODFREY # 1-32**

County **SHERIDAN** State **KS**

Water Source: **TANK**

Submitted By: \_\_\_\_\_ Date: **11/4/2017**

pH Level **7** Must be less than 8.5

Sulfates **400** Must be less than 1,000 PPM

Chlorides **0** Must be less than 3,000 PPM

Temperature **64**

**COMMENTS**

Thank You

Customer Signature

