

Customer Name SUEMAUR EXPLORATION  
 Well Name GODFREY 1-32  
 Job Type Surface

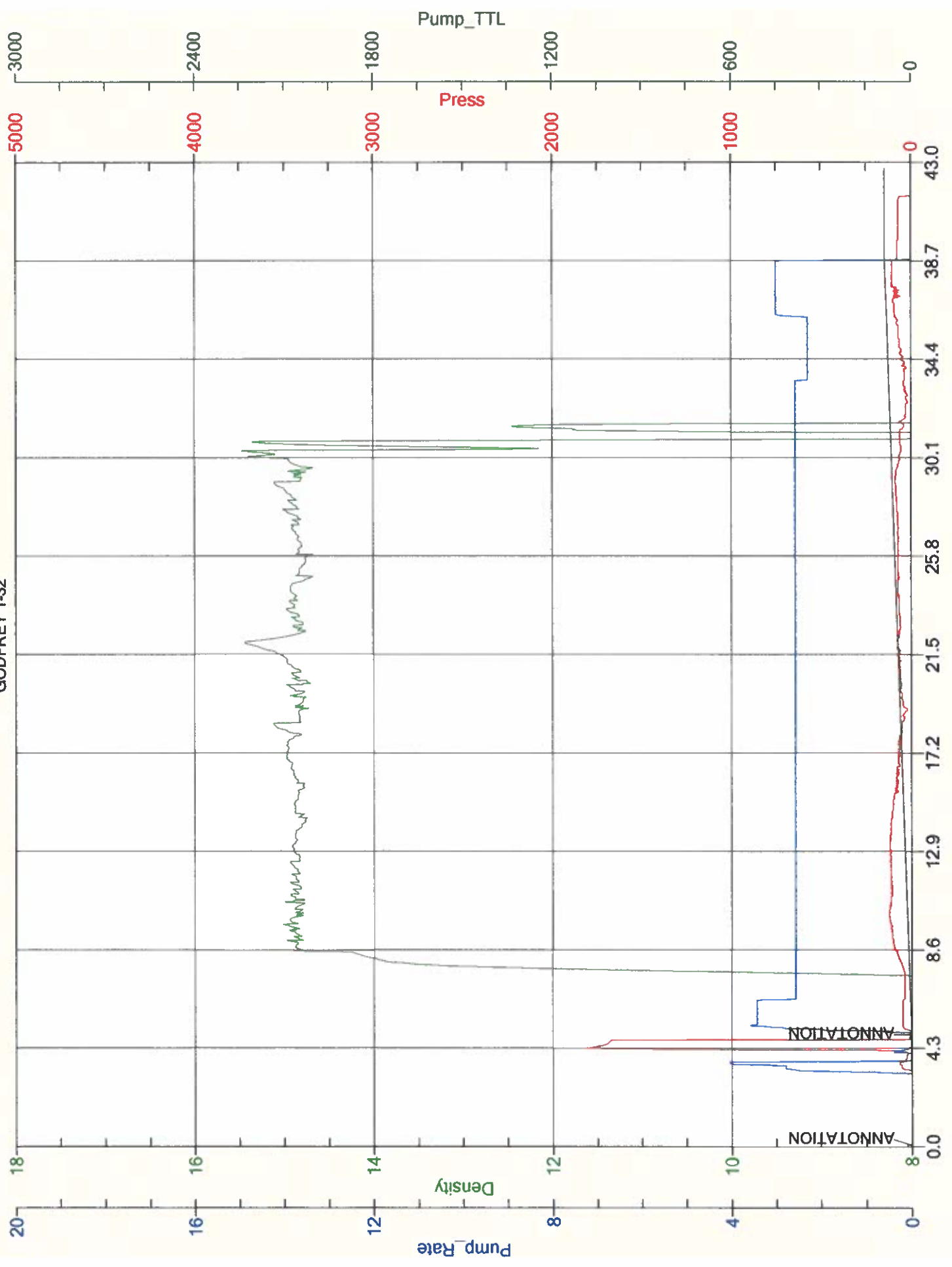
District Liberal  
 Supervisor ALDO ESPINOZA  
 Engineer \_\_\_\_\_



Seq No.	Start Date/Time	Category	Event	Equipment	Event ID	Density (lb/gal)	Pump Rate (bpm)	Pump Vol (bbls)	Pipe Pressure (psl)	Comments
1	10/26/2017 17:30									
2	600PM	Mobilization	Arrive on Location	Cement Pump Truck	48					ON LOCATION
3	926PM	Operational	Rig Up		50					RIG UP
4	930PM									CASING ON BOTTOM
5	940PM				53	8.34	0.2	5	2000	SAFETY MEETING, BRAKE CIRCULATION
6	957PM					8.34	3	5		SAFETY MEETING, PRESSURE TEST LINES
7	959PM					14.8	3	65		5 BBL WATER SPACER
8	1027PM					8.34	3	17.5		275 SK/65 BBL SLURRY AT 14.8 #
9						8.34	3			START DISPLACING
10										17.5 BBL WATER DISPLACEMENT
11	1032PM				73					LEAVE 20 FT OF CEMENT ON PIPE 20 bbls cement returns
12	1040PM									SHUT TIN
13										LEAVE 8.5/8 SWEDGE AND 2" VALVE ON CASING TO
14	1140PM									RIG DOWN
15										LEAVE LOCATION
16										HOLD CEMENT
17										LEAVE LOCATION
18										THANKS
19										



# SUEMAUR EXPLORATION GODFREY 1-32





**CEMENT MIXING WATER GUIDELINES**

Company Name: **Suemaur Exploration & Production, LLC**

Lease Name: **Godfrey # 1-32**

County **Sheridan** State **KS**

Water Source: **TANK**

Submitted By: **Aldo Espinoza** Date: **10/26/2017**

pH Level	<b>7</b>	Must be less than 8.5
Sulfates	<b>400</b>	Must be less than 1,000 PPM
Chlorides	<b>0</b>	Must be less than 3,000 PPM
Temperature	<b>64</b>	

**COMMENTS**

Thank You

Customer Signature 