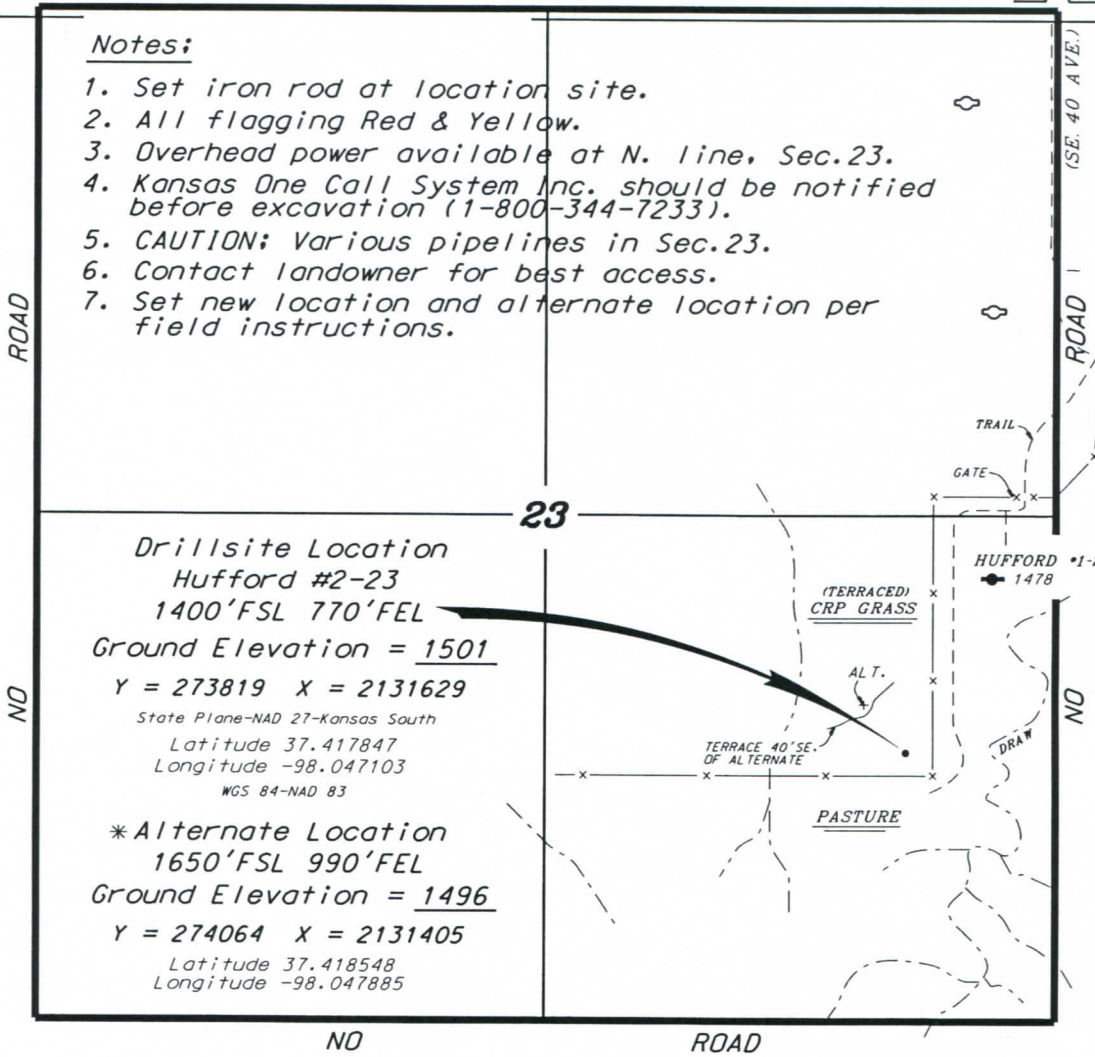


**MTM PETROLEUM, INC.**  
**HUFFORD LEASE**  
**SE. 1/4, SECTION 23, T30S, R7W**  
**KINGMAN COUNTY, KANSAS**

GRAVEL (SE. 150 ST.) ROAD

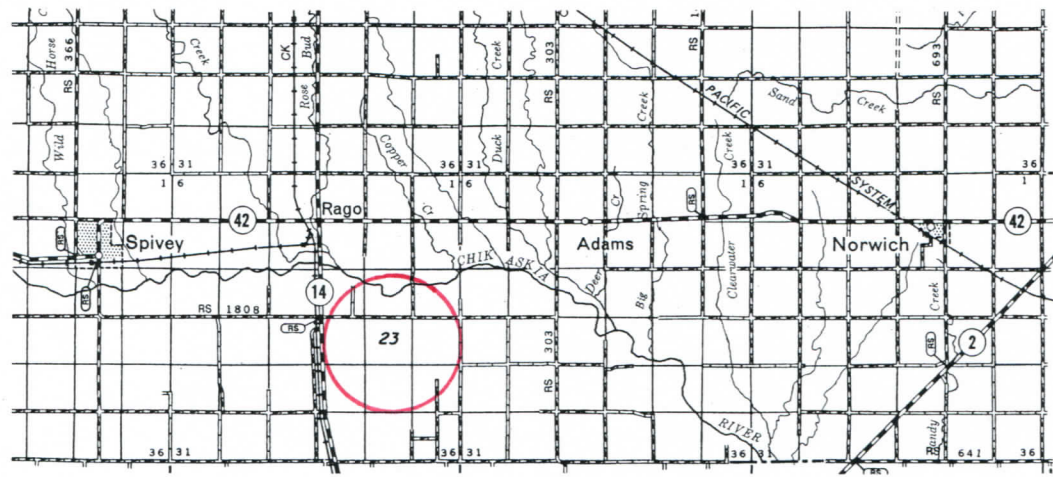
**Notes:**

1. Set iron rod at location site.
2. All flagging Red & Yellow.
3. Overhead power available at N. line, Sec. 23.
4. Kansas One Call System Inc. should be notified before excavation (1-800-344-7233).
5. CAUTION: Various pipelines in Sec. 23.
6. Contact landowner for best access.
7. Set new location and alternate location per field instructions.



**Drillsite Location**  
**Hufford #2-23**  
**1400'FSL 770'FEL**  
**Ground Elevation = 1501**  
**Y = 273819 X = 2131629**  
 State Plane-NAD 27-Kansas South  
 Latitude 37.417847  
 Longitude -98.047103  
 WGS 84-NAD 83

**\* Alternate Location**  
**1650'FSL 990'FEL**  
**Ground Elevation = 1496**  
**Y = 274064 X = 2131405**  
 Latitude 37.418548  
 Longitude -98.047885



\* Ingress and egress to location as shown on this plat is per usage only and may not be legally opened for public use. Contact landowner, tenant and county road department for access.

\* Controlling data is based upon the best maps and photographs available to us and upon a regular section of land containing 640 acres.  
 \* Approximate section lines were determined using the normal standard of care of oilfield surveyors practicing in the state of Kansas. The section corners, which establish the precise section lines, were not necessarily located, and the exact location of the drillsite location in the section is not guaranteed. Therefore, the operator securing this service and accepting this plat and all other parties relying thereon agree to hold Central Kansas Oilfield Services, Inc., its officers and employees harmless from all losses, costs and expenses and said entities released from any liability from incidental or consequential damages.  
 \* Elevations derived from National Geodetic Vertical Datum.

Date November 1, 2017