

Janel Staab
Consulting Petroleum Geologist

2428 Toulon Ave
Hays, KS 67601
Phone: 785-625-4311
Cell Phone: 785-635-1660
janel1969@gmail.com

GEOLOGIST'S WELL REPORT

COMPANY Staab Oil Company #6037
WELL Todd Hixon Road
FIELD Vopec
LOCATION (legal) SE-NE-NW-SW, 2150 FSL, 1035 FWL
Section 9 TWP 12S RGE 21 W
(Map) I-70 Rig Exit - North 2 1/4 miles to Rd J, 1 mile West, 370 ave.
COUNTY Trego STATE Kansas north 1 1/2 miles
in towards east
ELEVATION: 2332 K.B., 2327 G.L.

Depths measured from Kelly Bushing

A. P. I. NUMBER 15-195-23022-00-00
GEOLOGY BY Janel Staab

PERTINENT WELL DATA

CONTRACTOR Shields Oil Producers # 5184

RIG 1 HYDRAULICS Bethlehem 225 6x14

DRILL PIPE 4 1/2" XH COLLARS 6 1/4" 233

CASING: SURFACE 8 5/8" @ 217' W/150 SX common

PRODUCTION 5/2 @ 4110' W/150 SX common

DRILLING FLUID: COMPANY Mud-Co / Service Mud Inc

TYPE: Chemical Gary Schmidt

REMARKS: Full Service

DRILLSTEM TESTS: COMPANY Trilobite Testing Inc

NUMBER OF TESTS 4

ELECTIC LOGS: COMPANY ELI

DETAIL (5") 3300' - RTD

TYPE DI CompX-D, Micro

DRILLING TIME FROM 3340' TO RTD

SAMPLE TIME FROM 3340' TO RTD

SUPERVISION FROM 3340' TO RTD

VERTICAL DEVIATION 1° @ 3660

PLUGGING REPORT _____

RESERVE PIT _____

DAILY REPORT

DATE:	7 a.m. Depth	RIG ACTIVITY
5-25-17	MI RU	
5-30-17	S.PUD	
5-31-17	220'	W.O.C
6-01-17	1209'	Drilling Sh. stst. L
6-02-17	2270'	Drilling sh stst. +1
6-03-17	3002	Drilling sh stst. *
6-04-17	3472'	Drilling Topeka
6-05-17	3660'	DST #1 LKC. A+
6-06-17	3725'	DST #2 LKC. C-F
6-07-17	3872'	Drilling Base KC
6-08-17	4110' - T.D.	DST #4 Arbuckle

m
ger

DRILL STEM TESTS

NO	INTERVAL	IFP/TIME	ISIP/TIME	FFP/TIME	FSIP/TIME	IHP/FHP	RECOVER
1	LKC A+B 3623- 3660	20# 32# 5'	784# 60'	34# 89# 60'	736# 90'	1800# 1735#	60' mcm - 5% oil 120' GWCm 10% oil 45' OCM 8% oil 20' MCO 95% oil
2	LKC C F 3661- 3725	21# 30# 5'	607# 60'	33# 61# 60'	553# 90'	1891# 1854#	30' OWCm 20% oil 20' OCM 5% oil 60' OCM 2% oil
3	LKC JHK 3797- 3845	-	-	-	-	-	Mis Run - Packer Fai
4	Arbuckle 4023- 4047	18# 21# 5'	1234# 60'	23# 52# 60'	1158# 90'	2063# 1964#	20' OCM 10% 20' OCM 20% 40' CO
5							
6							
7							

MUD RECORD

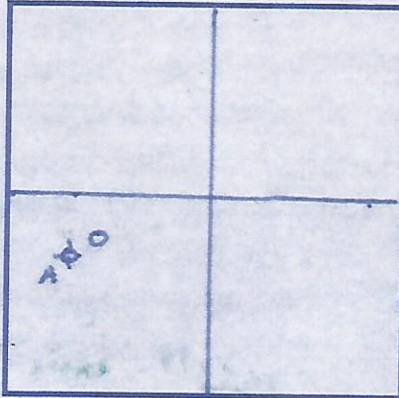
CHK	DEPTH	WT	VIS	FIL	CHL	YP	LCM
1	1209	8.8	29	-	-	-	-
2	2270	9.7	29	-	2800	-	-
3	3002	8.6	60+	6.4	4800	33	3
4	3472	9.0	50	6.8	4500	25	2
5	3660	9.1	58	6.4	4500	25	2
6	3725	9.1	58	6.4	4500	25	2
7	3936	9.4	51	7.6	4600	21	2
8	4110	9.4	56	7.6	4500	28	2
9							
10							
11							

BIT RECORD

NO	SIZE	MAKE	TYPE	DEPTH	FEET	HOURS
1	12 1/4"		Miltooth	220'	220'	3 3/4
2	7 7/8"	Reed	S-52	4110'	3890'	10 1/2
3						
4						

FORMATION TOPS & STRUCTURAL GEO

REFERRED TO:



- A: Murfen - PNK #1-9
- B: _____
- C: _____
- D: _____
- E: _____

70% water
40% water
30' G.I.P.
20% water
95% mud
98% mud

oil
oil

STRATIGRAPHIC MARKERS	SUBJECT WELL		STRUCTURAL POSITION			
	SAMPLE	E. LOG	DATUM	A	B	C
Anhydrite	1760	1759	+573	+568		
Base	1811	1809	+523	+518		
Topeka	3378	3377	-1045	-1050		
Huebner Sh	3595	3592	-1260	-1266		
Toronto	3615	3614	-1282			
Lansing	3630	3629	-1297	-1301		
(BKC)	3866	3861	-1529	-1534		
Arbuckle	4010	4016	-1684	-1682		
T.D.	4110	4110	-1778	-1783		

5 6 7

LOGY

SUMMARY

The Todd Hixon Road was drilled using Rig. Location - Sec 9, T12S, R21W. W Kansas starting on May 30, 2017 and p June 8, 2017.

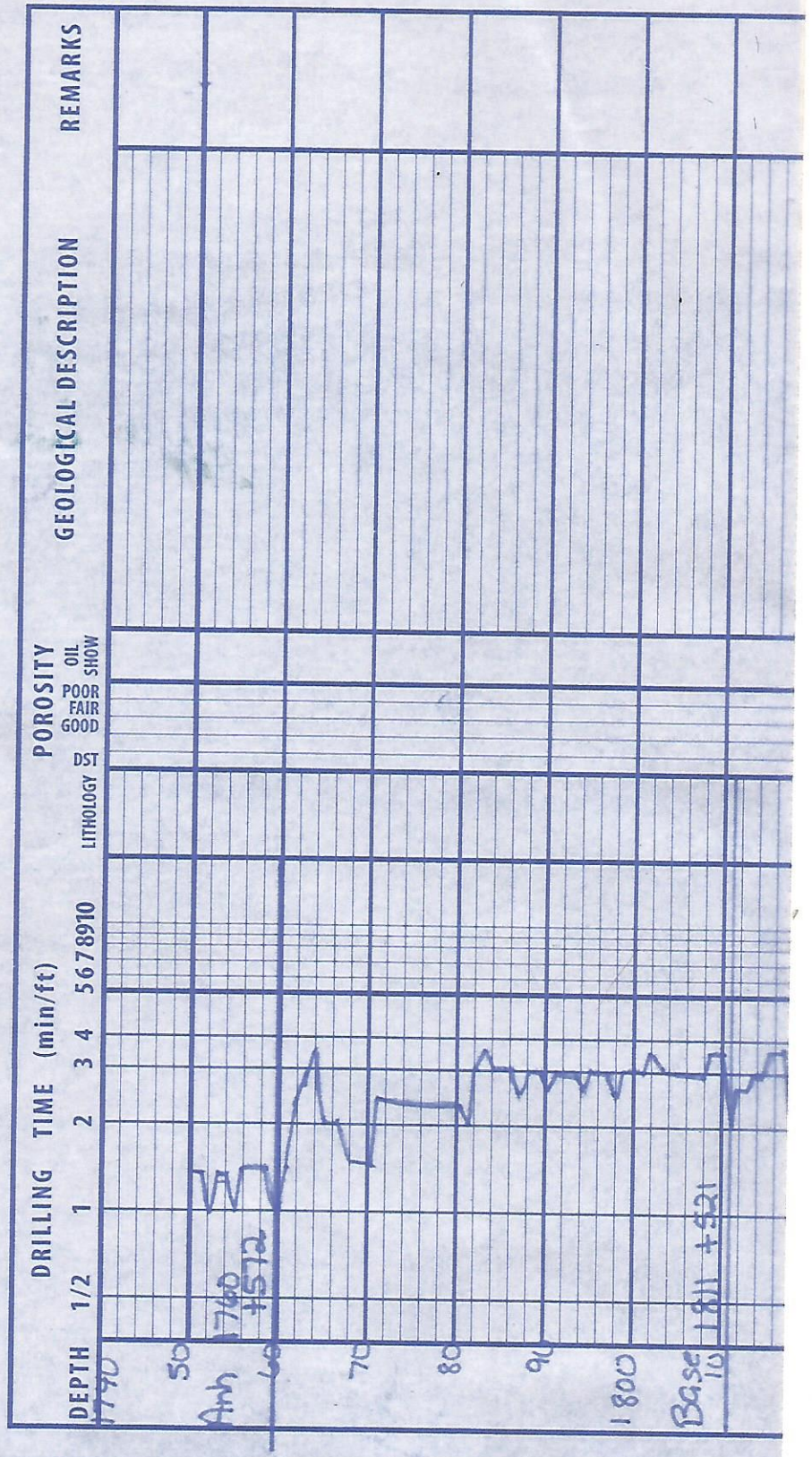
3-D Seismic had indicated that this is a Arbuckle high compared to surrounding 4 DST's and logs were ran with DST indicating a positive test, but Arbuckle came in low.

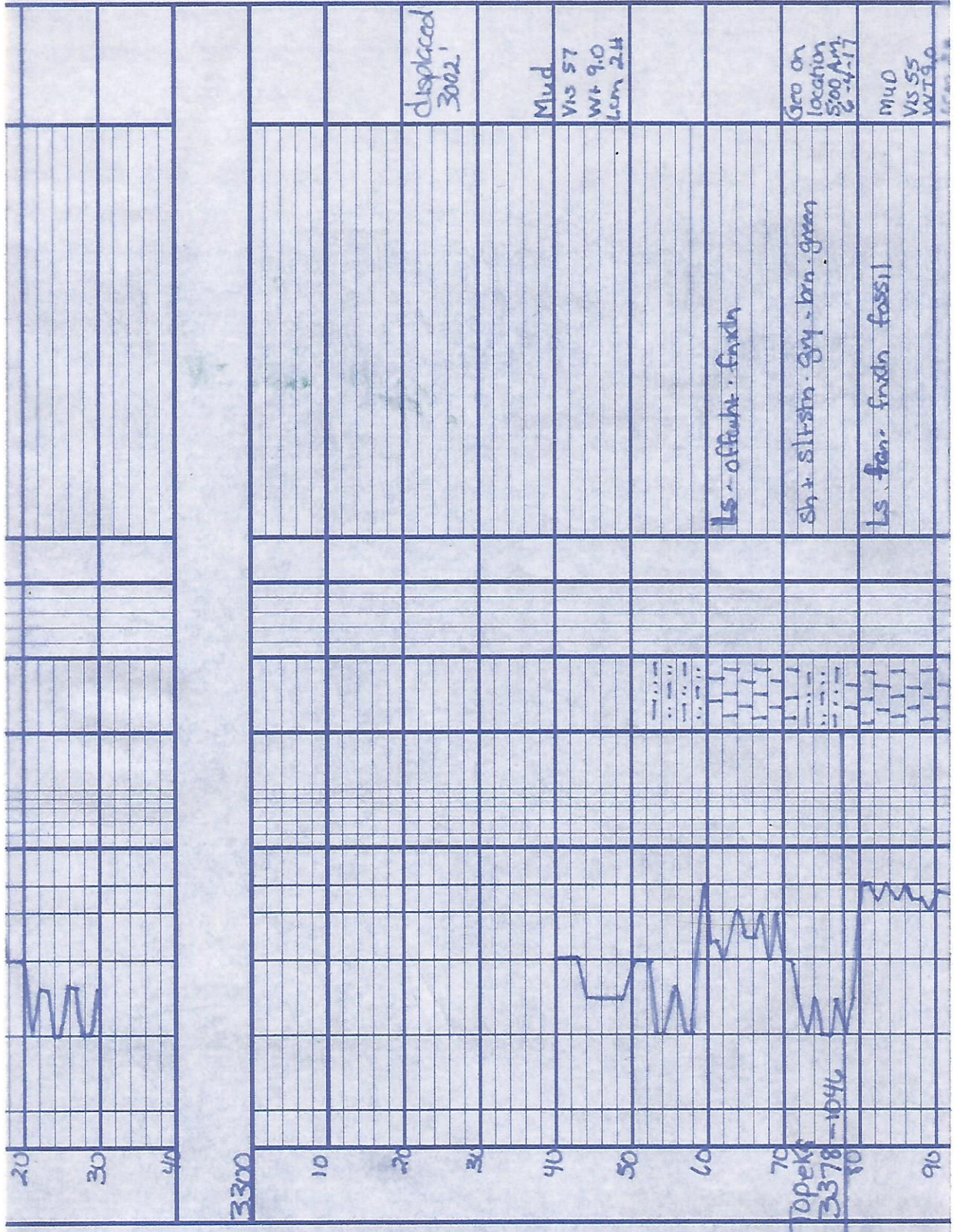
Decision was made to plug location

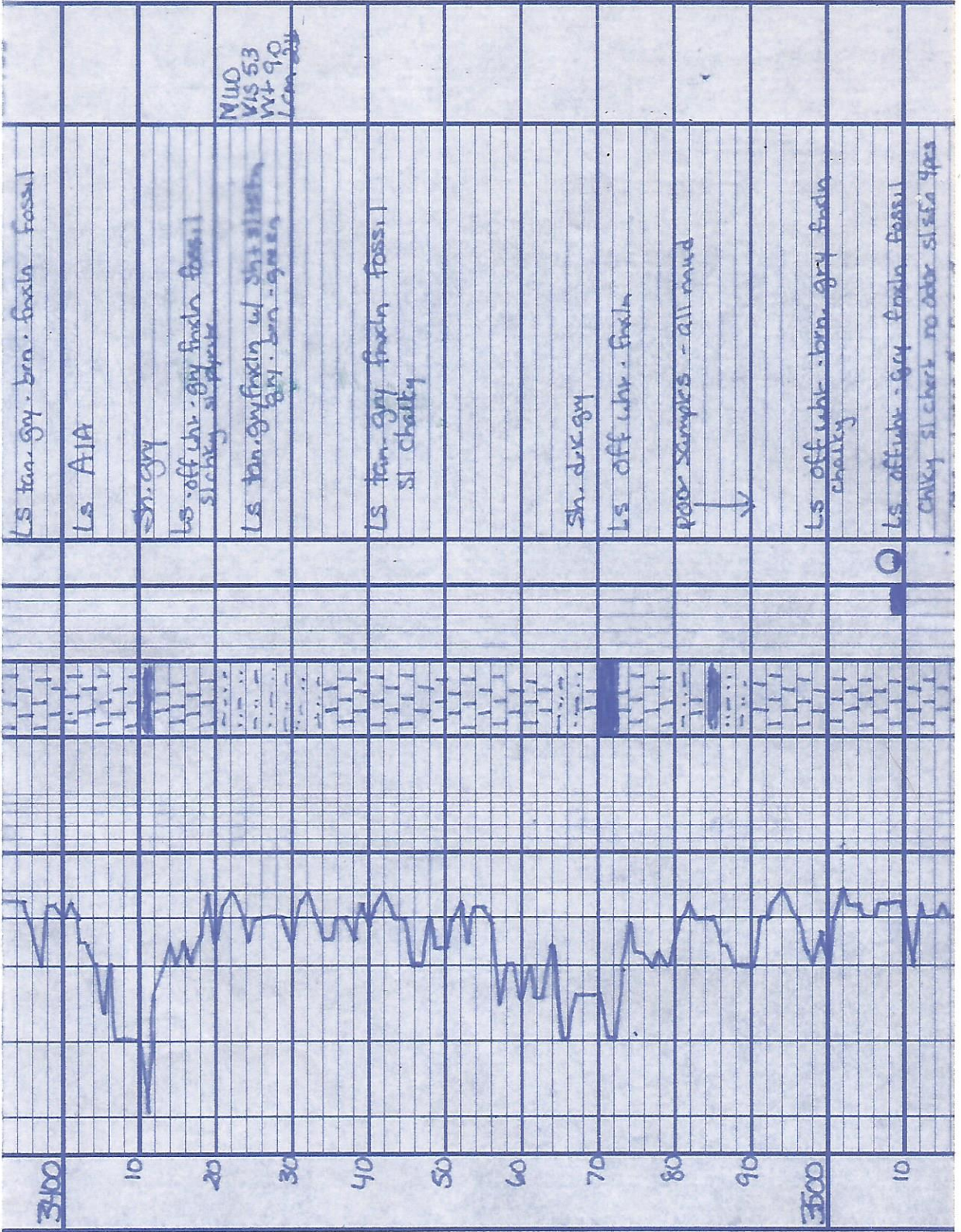
Paul Seal

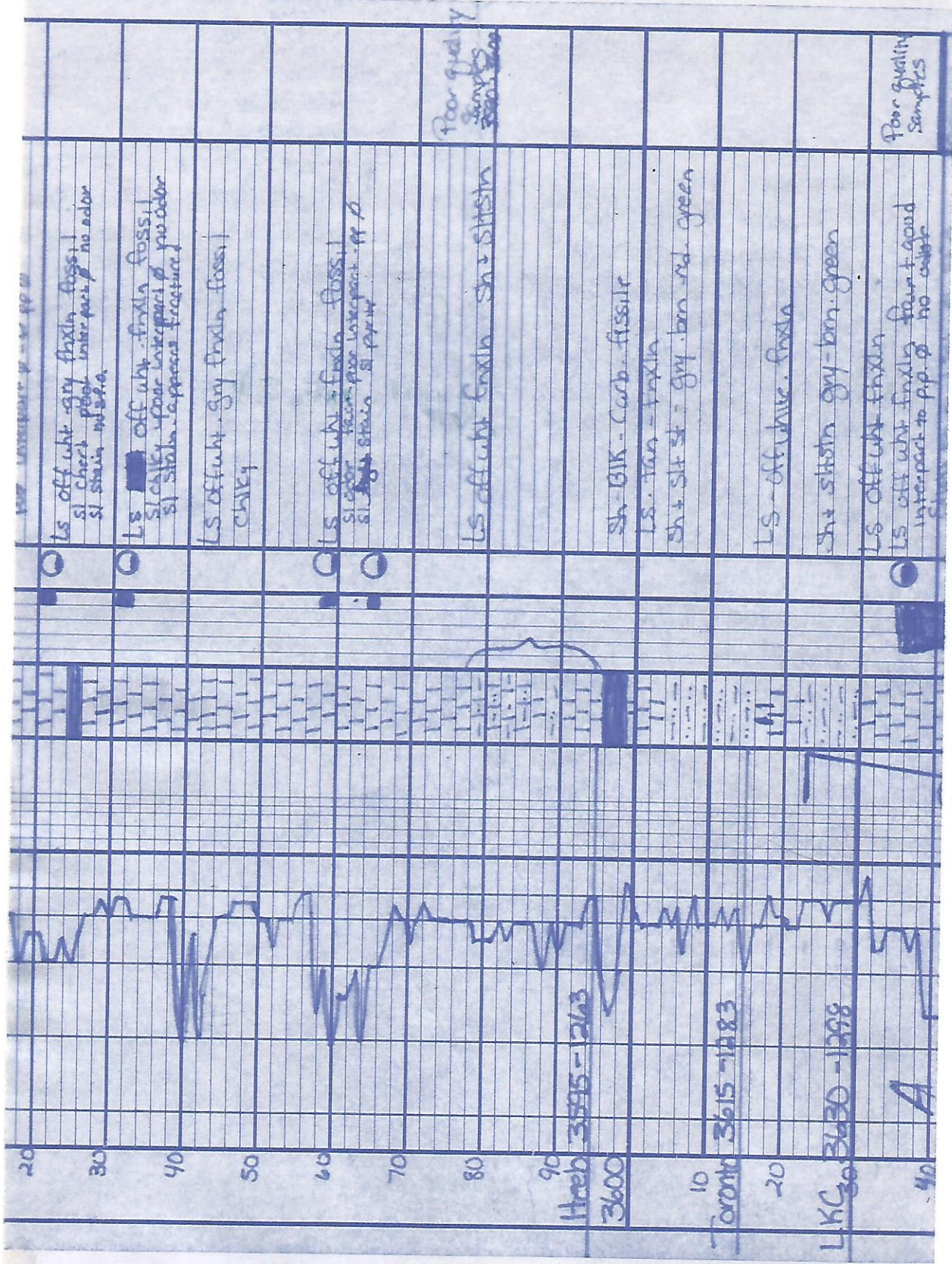
D E

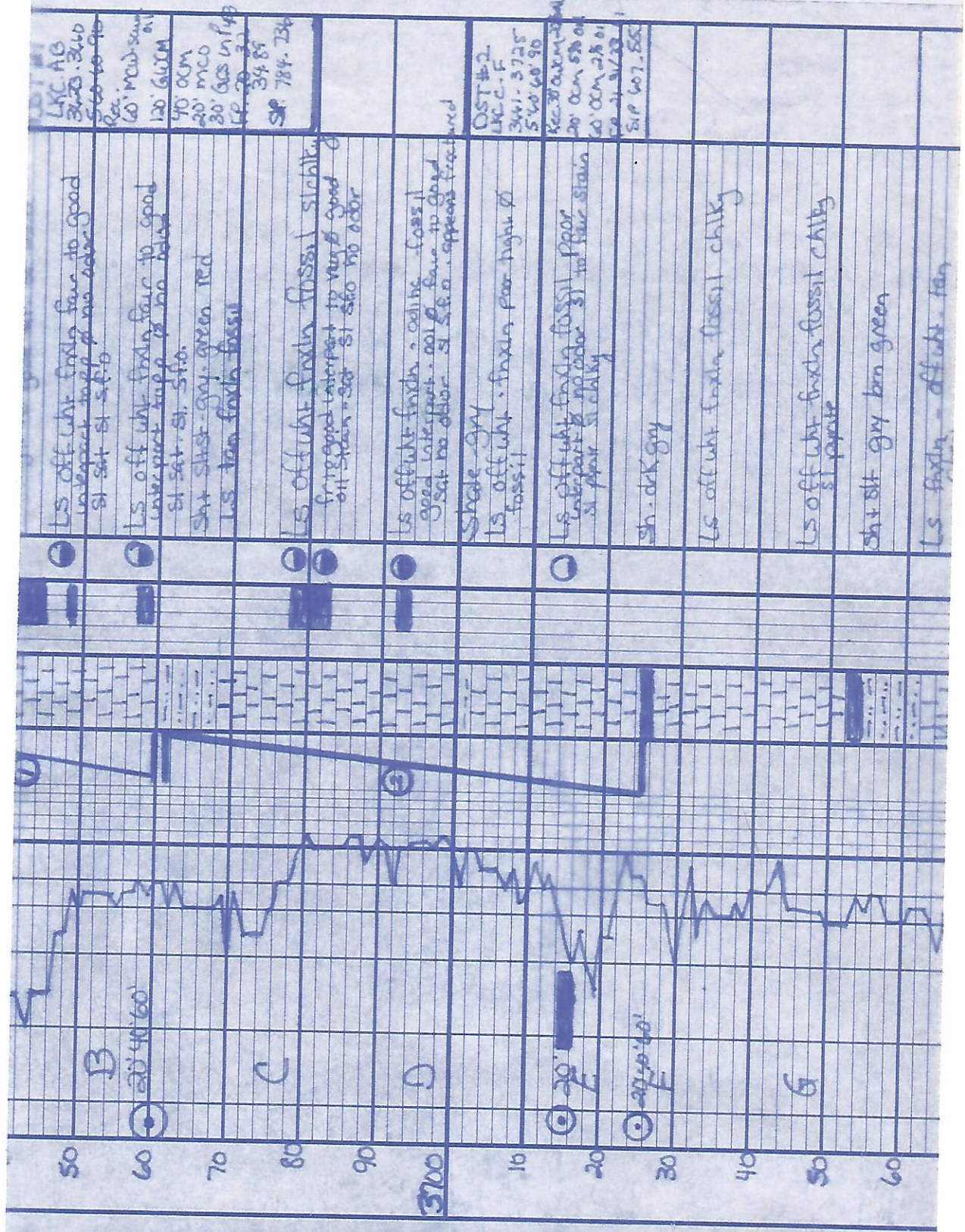
Shields
 a Trego Co.
 rugged
 location had
 locations.
 1.2 +4
 Structurally











LKC AB
3470-3480
540-60-90
Rec. 120' MWD sum
120' 600M
70' 00M
20' MCO
30' 600 M/F
SP 784. 236

OST #2
LKC-F
3471-3725
540' 60' 90
Rec. 30' 00M
20' 00M 58' 00'
60' 00M 28' 00'
SP 607-565

LS off wht. fossils fair to good
interpart. imp. of no odor
SI sat. SI. S.F.

LS off wht. fossils fair to good
interpart. imp. of no odor
SI sat. SI. S.F.

Sh + sh. dk. gray. green red
LS tan fossils fossil

LS off wht. fossils fossil stability
frag. good. interpart. to very good
off stain. sat. SI. S.F. no odor

LS off wht. fossils. coaling. fossil
good interpart. of fine to good
sat. no odor. SI. S.F. appears fractured

Shale - gray

LS off wht. fossils. fine. floor. higher
fossil

LS off wht. fossils. fine. floor
interpart. of no odor. SI. to fine stain
SI. floor. S.F.

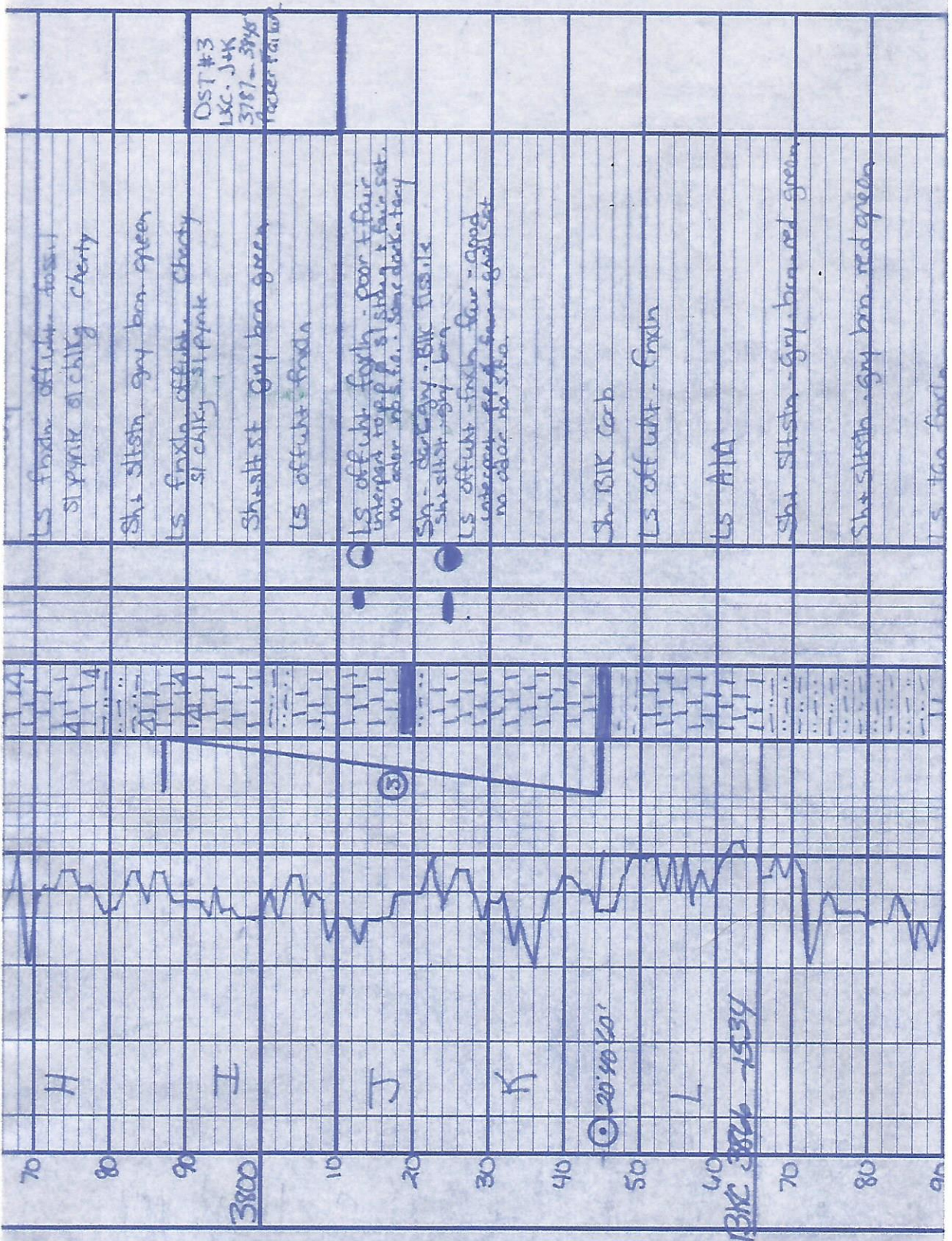
Sh. dk. gray

LS off wht. fossils. fossil. chalky

LS off wht. fossils. fossil. chalky
SI. fine

Sh + dk. gray. brown green

LS fossils - off wht. tan



LS fndn. off. lght. fndn.
sl pink chalky Cherty

Sh. siltstn. gray brn. green

LS fndn. off. lght. Cherty
sl chalky sl pink

Sh. siltstn. gray brn. green

LS off. lght. fndn.

LS off. lght. fndn. - poor + fair
interpart top of siltstn. + face set.
no order to s. s. c. Some dark. tacy

Sh - dark gray - BIK fndn.
Sh. siltstn. gray brn.

LS off. lght. fndn. fair - good
interpart of siltstn. - good set
no order to s. s. c.

Sh. BIK carb.

LS off. lght. fndn.

LS A1A

Sh. siltstn. - gray brn. red green

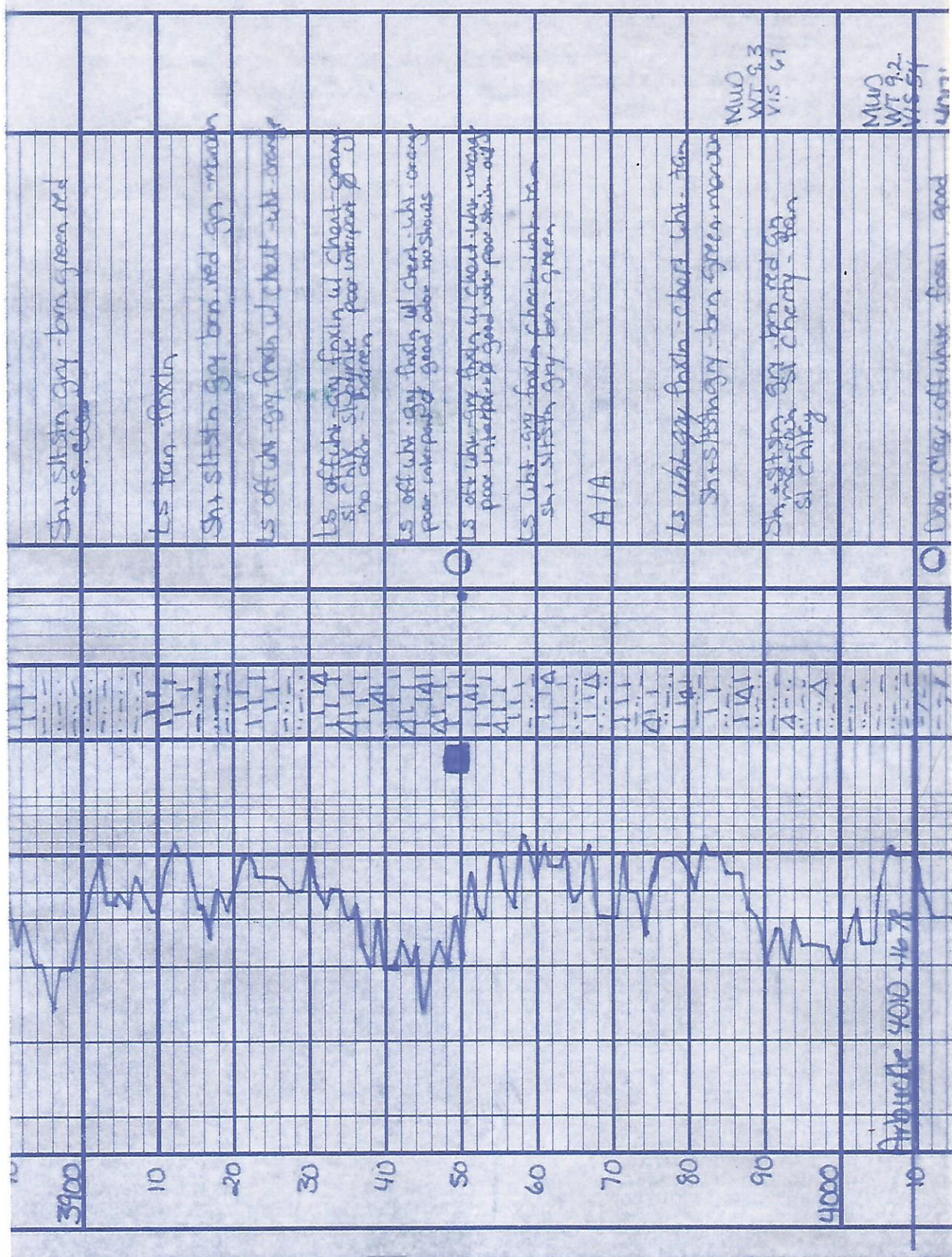
Sh. siltstn. - gray brn. red green

LS. too fndn.

Ost #3
LXC. J+K
3787 - 3795
Pacifica, WY

20' 40' 20'

BIK 3826-1534



Sh. silty sh. gray - brown green red
 ss. clay

Ls tan - pinkish

Sh. silty sh. gray brown red gray - maroon

Ls off wh. gray fresh w/ chest - white orange

Ls off wh. gray fresh w/ chest - white orange
 silty clay - silty shale - poor interpart. of
 no odor - barren

Ls off wh. gray fresh w/ chest - white orange
 poor interpart. of good odor - no shales

Ls off wh. gray fresh w/ chest - white orange
 poor interpart. of good odor - poor stain - out

Ls wht - gray - fresh - chest - white - tan
 sh. silty sh. gray - brown green

A/A

Ls wht - gray - fresh - chest - white - tan
 sh. silty sh. gray - brown green - maroon

MUD
 WT 9.3
 VIS 67

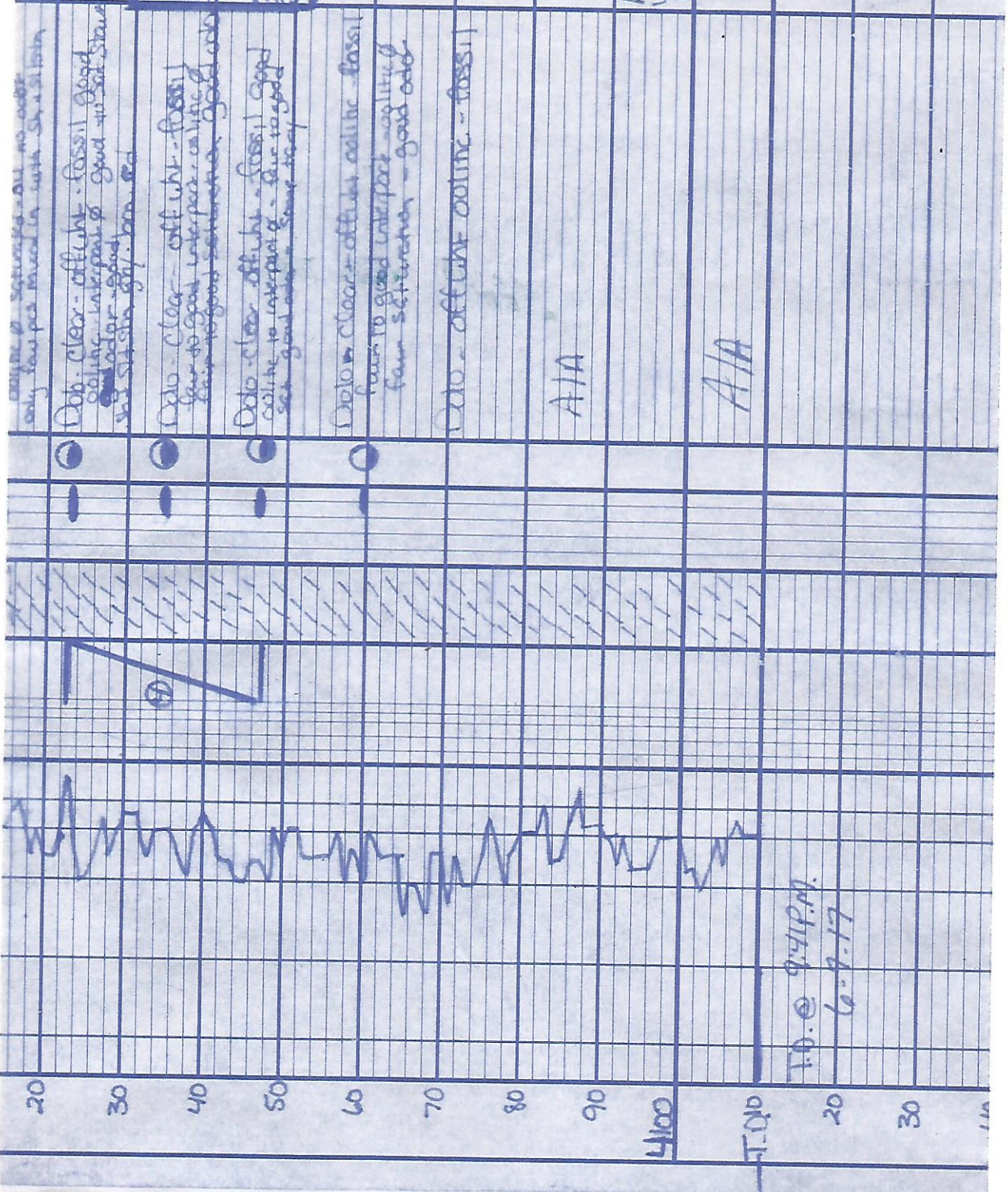
Sh. silty sh. gray brown red gray
 silty clay
 silty cherty - tan

MUD
 WT 9.2
 VIS 57

Date: clay-off-white, fossil good

Arbitrarily 4000 - 1678

torque



DST #4
 Ar buckle
 4023-4077
 5/10/68
 Rec
 200cm 10% oil
 200cm 40% oil
 10' CO

Mud
 WT 9.3
 Vis 65

A/A

A/A

10. @ 9:41 P.M.
 6-9-17