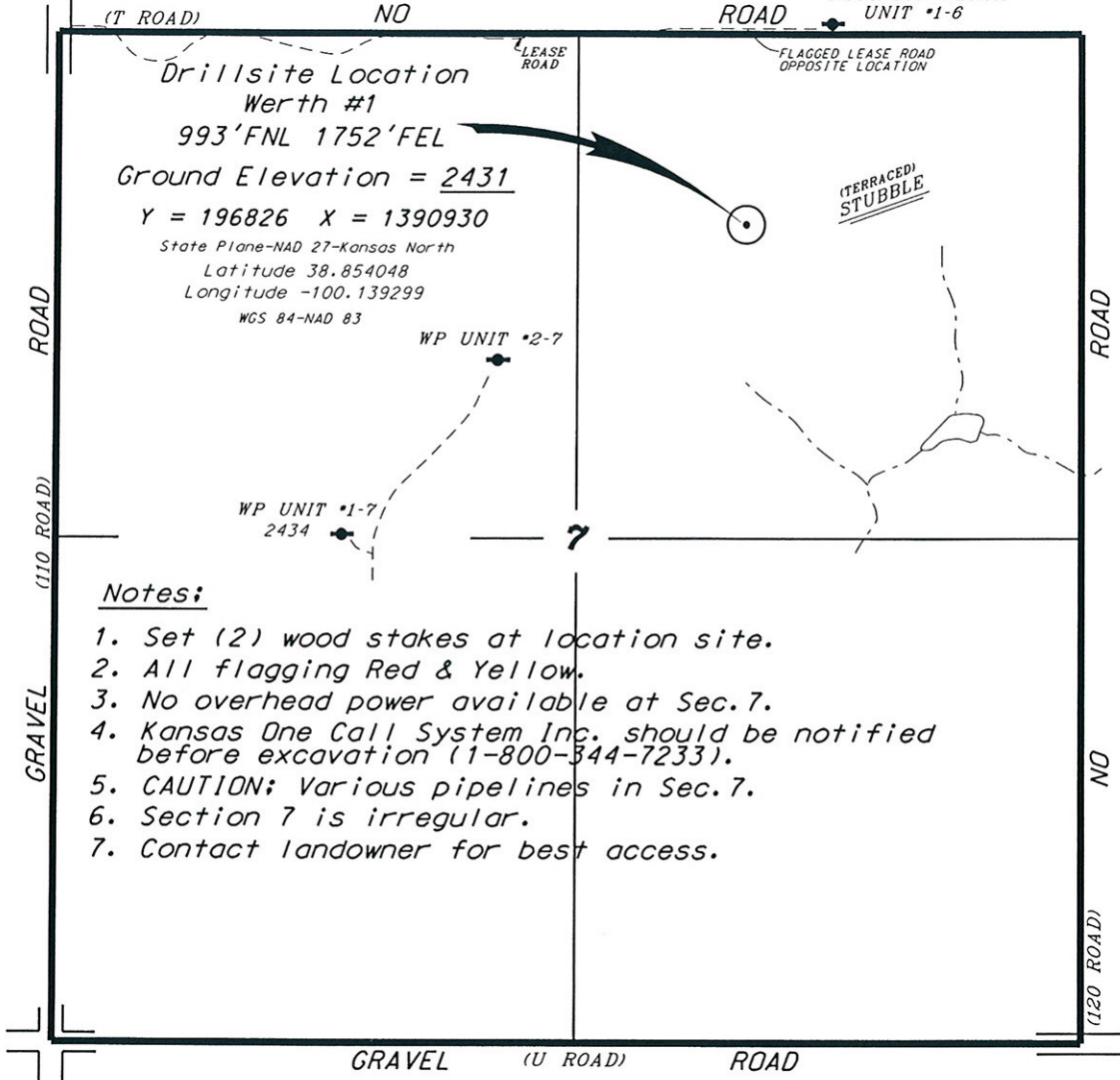
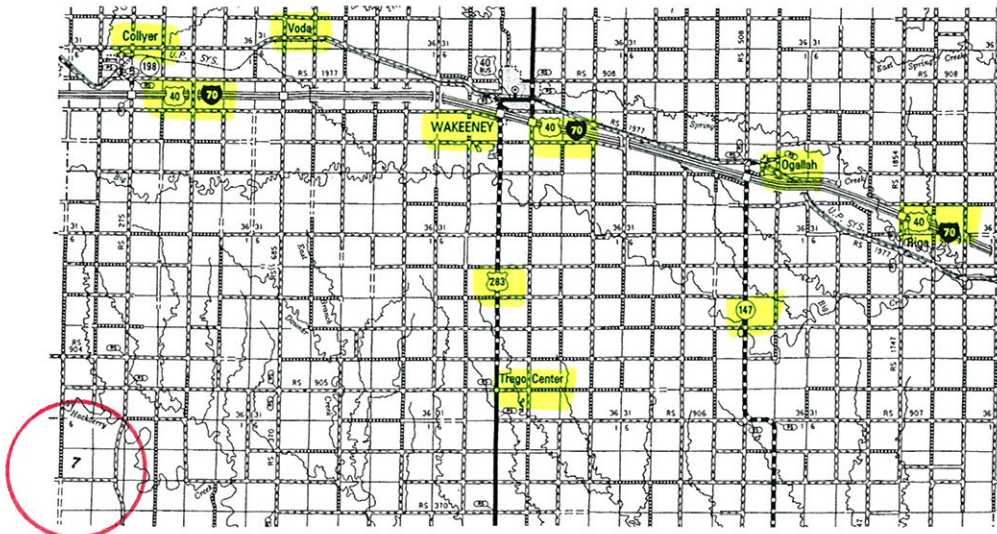


CARMEN SCHMITT, INC.
WERTH LEASE
NE. 1/4, SECTION 7, T14S, R25W
TREGO COUNTY, KANSAS

PHILLIPS EXPLORATION CO., LC
 PURINTON-WERTH
 UNIT #1-6

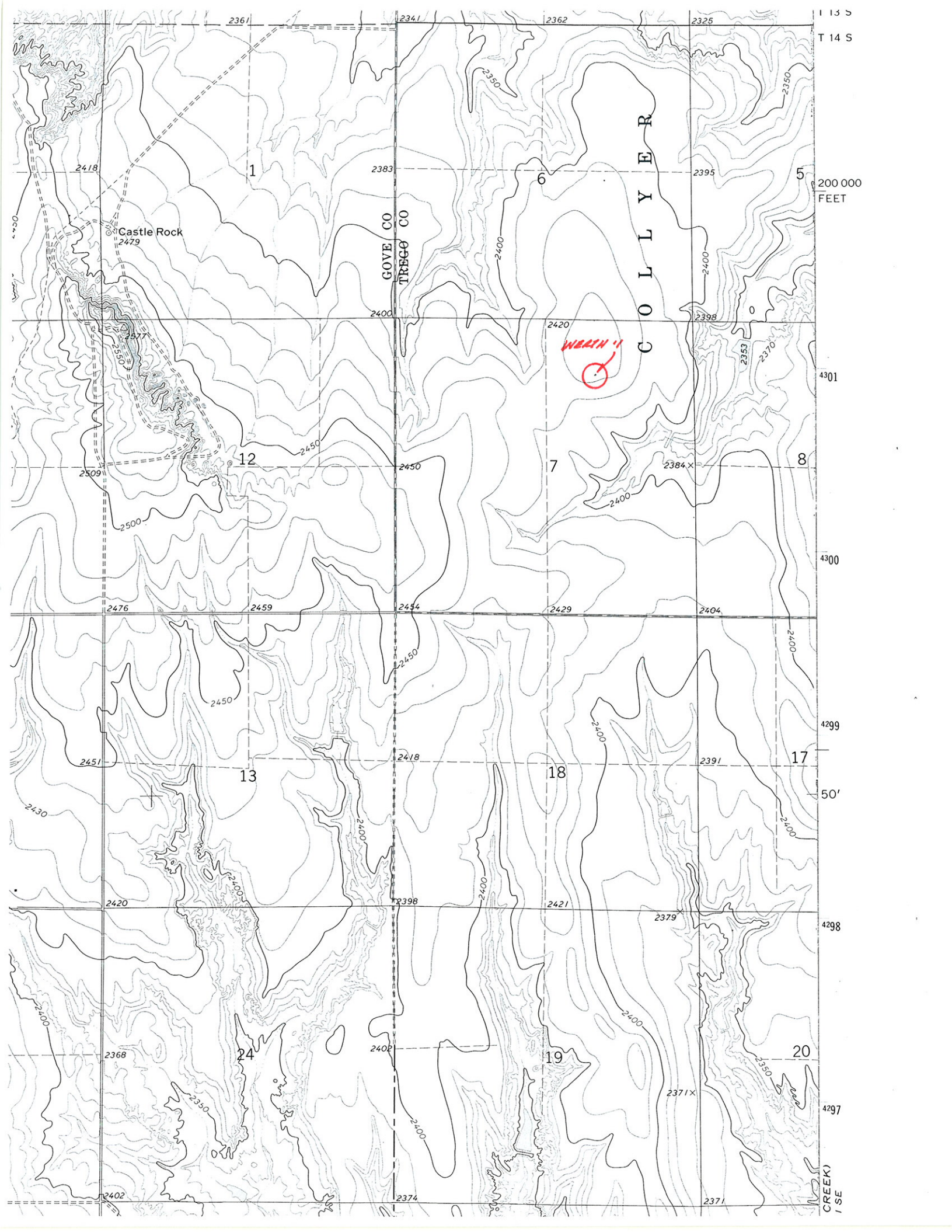


* Ingress and egress to location as shown on this plat is per usage only and may not be legally opened for public use. Contact landowner, tenant and county road department for access.



* Controlling data is based upon the best maps and photographs available to us and upon a regular section of land containing 640 acres.
 * Approximate section lines were determined using the normal standard of care of oilfield surveyors practicing in the state of Kansas. The section corners, which establish the precise section lines, were not necessarily located, and the exact location of the drillsite location in the section is not guaranteed. Therefore, the operator securing this service and accepting this plat and all other parties relying thereon agree to hold Central Kansas Oilfield Services, Inc., its officers and employees harmless from all losses, costs and expenses and said entities released from any liability from incidental or consequential damages.
 * Elevations derived from National Geodetic Vertical Datum.

Date November 6, 2017



T 14 S

200 000 FEET

4301

4300

4299

50'

4298

4297

CREEK (S E)

C O L L Y E R

GOVE CO
TREGO CO

Castle Rock
2479

WORTH!
⊙

2361

2341

2362

2325

1

6

5

12

7

8

13

18

17

24

19

20

2418

2383

2395

2479

2400

2398

2509

2450

2450

2420

2398

2500

2500

2400

2384 X

2476

2459

2444

2429

2404

2451

2450

2418

2400

2391

2420

2400

2398

2421

2379

2368

2350

2402

2400

2371 X

2402

2374

2371