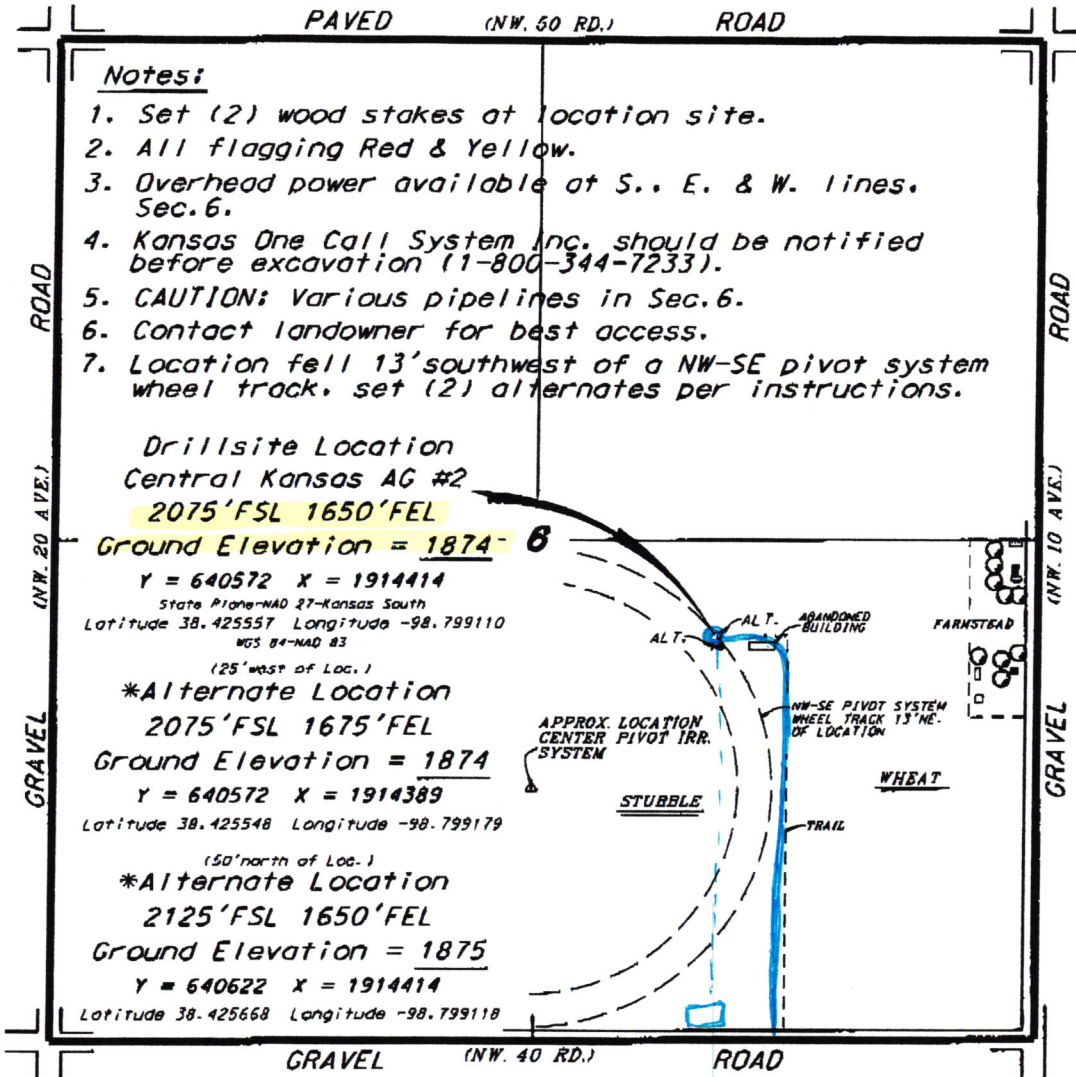


**RJM OIL COMPANY, INC.
CENTRAL KANSAS AG LEASE
SE. 1/4, SECTION 6, T19S, R13W
BARTON COUNTY, KANSAS**



Notes:

1. Set (2) wood stakes at location site.
2. All flagging Red & Yellow.
3. Overhead power available at S., E. & W. lines. Sec. 6.
4. Kansas One Call System Inc. should be notified before excavation (1-800-344-7233).
5. CAUTION: Various pipelines in Sec. 6.
6. Contact landowner for best access.
7. Location fell 13' southwest of a NW-SE pivot system wheel track, set (2) alternates per instructions.

Drillsite Location
Central Kansas AG #2
2075'FSL 1650'FEL

Ground Elevation = **1874**

Y = 640572 X = 1914414
State Plane-NAD 27-Kansas South
Latitude 38.425557 Longitude -98.799110
NAD 83
(25' west of Loc.)

*Alternate Location
2075'FSL 1675'FEL

Ground Elevation = **1874**

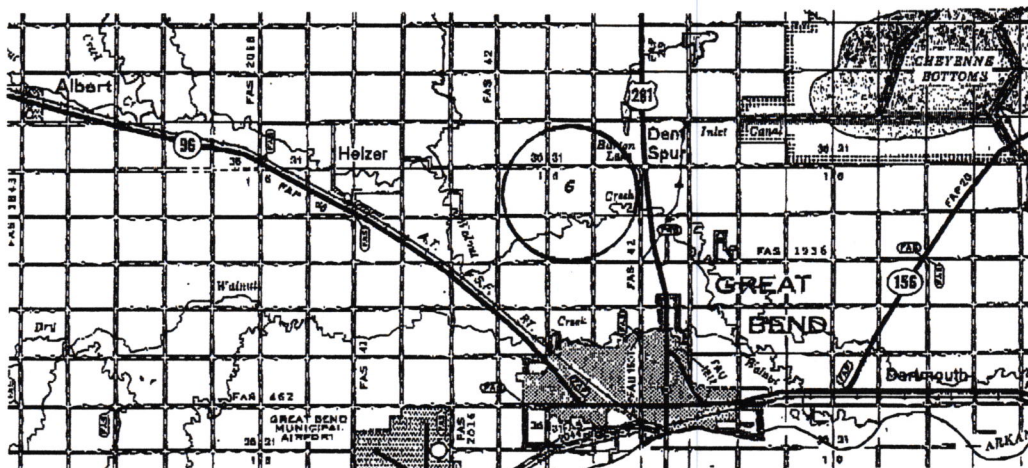
Y = 640572 X = 1914389
Latitude 38.425548 Longitude -98.799179
(50' north of Loc.)

*Alternate Location
2125'FSL 1650'FEL

Ground Elevation = **1875**

Y = 640622 X = 1914414
Latitude 38.425668 Longitude -98.799118

*Ingress and egress to location as shown on this plot is for usage only and may not be legally opened for public use. Contact landowner, tenant and county road department for access.



• Controlling data is based upon the best maps and photographs available to us and upon a regular section of land containing 640 acres.
• Approximate section lines were determined using the normal standard of care of oilfield surveyors practicing in the state of Kansas. The section corners, which establish the precise section lines, were not necessarily located, and the exact location of the drillsite location in the section is not guaranteed. Therefore, the operator securing this service and accepting this plot and all other parties relying thereon agree to hold Central Kansas Oilfield Services, Inc., its officers and employees harmless from all losses, costs and expenses and hold entities released from any liability from the Central or consequential damages.
• Elevations derived from National Geodetic Vertical Datum.

Date **November 27, 2017**