

Sean Deenihan

Petroleum Geologist

GEOLOGIST'S REPORT

DRILLING TIME AND SAMPLE LOG

COMPANY **Triple Crown Operating, LLC**

LEASE **Uehling #1-29**

FIELD **Wildcat**

LOCATION **1400' FNL & 970' FEI**

SEC **29 TWPSP 20 S RGE 22 W**

COUNTY **Ness STATE Kansas**

CONTRACTOR **W.W. Drilling Rig #8**

SPUD **8/7/17 COMP 8/14/16**

RTD **4365' LTD 4365'**

MUD UP **TYPE MUD Chemical**

SAMPLES SAVED FROM **3500' TO RTD**

DRILLING TIME KEPT FROM **3500' TO RTD**

SAMPLES EXAMINED FROM **3500' TO RTD**

GEOLOGICAL SUPERVISION FROM **3700'**

REFERENCE WELL **CND/DIL SON Gemini**

ELEVATIONS

KB **2190'**

DF _____

GL **2185'**

Measurements Are All From Kelly Bushing

CASING

CONDUCTOR **8-5/8" at 1425'**

SURFACE **5.5" @ TD**

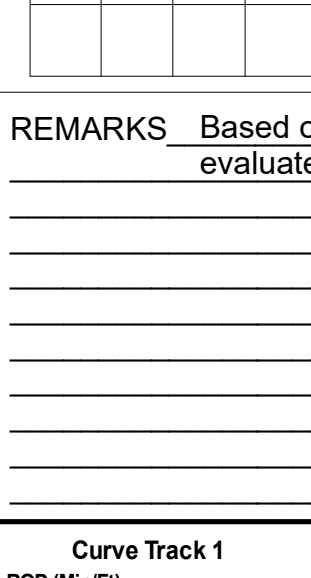
PRODUCTION **5.5" @ TD**

ELECTRICAL SURVEYS

CND/DIL SON Gemini

CND/DIL SON

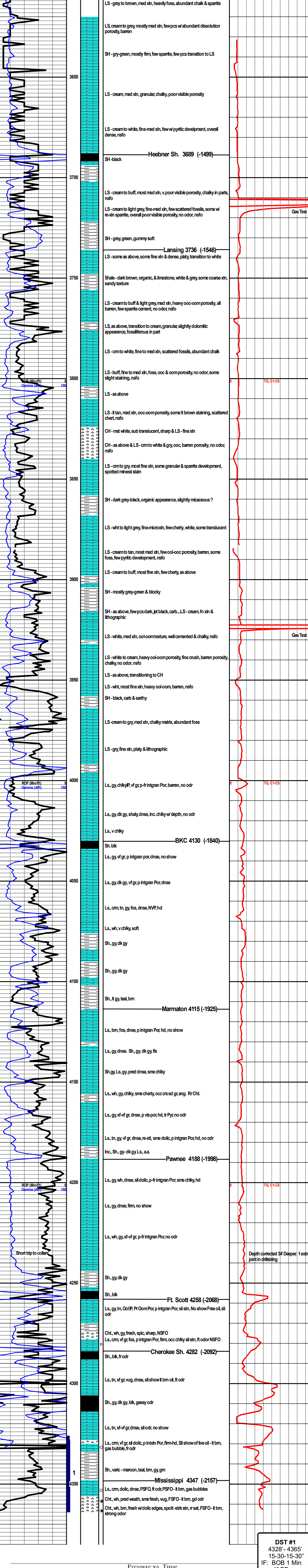
Formation	Sample Tops	E-log Tops	Struct Pos.
B/Anhydrite		1420 (+770)	
Heebner Sh.		3689 (-1499)	
Lansing		3736 (-1546)	
Marmaton		4114 (-1924)	
Ft. Scott		4258 (-2068)	
Cherokee Sh.		4282 (-2092)	
Mississippi		4347 (-2157)	



REMARKS Based on sample, log, and DST analysis, the Uehling #1-29 will be further evaluated through production casing.

Respectfully Submitted,

Sean P. Deenihan



DST #1
4328'-4365'
15-30-15-30"
IF: BOB 1 Min
1" BB
FF: BOB 1 Min
1" BB

Rec: 2574' CO
60' MCO
(80%O, 20%M)

IFP: 450-674#
FFP: 649-923#
SIP: 1403-1403#

Dropped Bar -
Reversed Oil into
water truck

