

JERRY GREEN

CONSULTING GEOLOGIST

4350 Keystone Rd
HAYS, KS 67601
PHONE: 785-625-5155

GEOLOGIST'S REPORT

DRILLING TIME AND SAMPLE LOG

COMPANY CASTLE RESOURCES INC.

LEASE L J DRILLING #2

FIELD CATHERINE SOUTH

LOCATION SW-NW-SE

SEC 15 TWP 13S RGE 17W

COUNTY ELLIS STATE KS.

CONTRACTOR WHITE KNIGHT DRLG.

SPUD 11-8-17 COMP 11-13-17

RTD 3620' LTD 3620'

MUD UP 2900' TYPE MUD CHEM

SAMPLES SAVED FROM 2900'

DRILLING TIME KEPT FROM 2900'

SAMPLES EXAMINED FROM 2900'

GEOLOGICAL SUPERVISION FROM 2900'

ELEVATIONS
KB 2001
DF
GI 1986

Measurements Are All From

CASING SURFACE @ 206' PRODUCTION

ELECTRICAL SURVEYS DIL/ND/MICRO

TO TD.
TO TD.
TO TD.

TO TD.
TO TD.
TO TD.

TO TD.
TO TD.
TO TD.

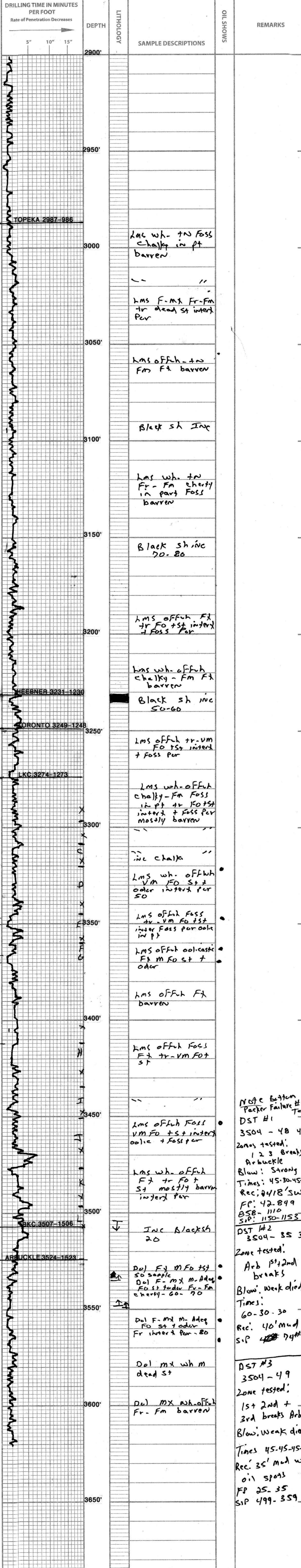
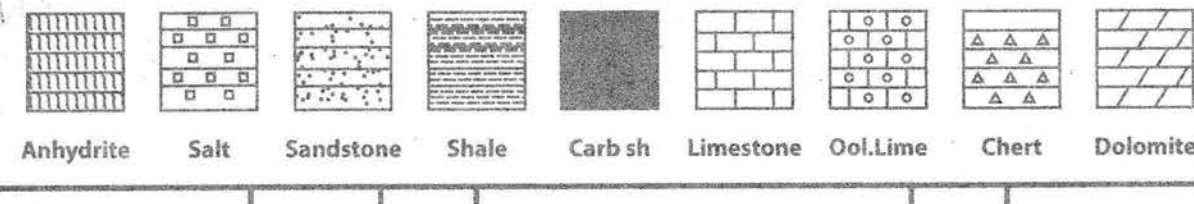
TO TD.
TO TD.
TO TD.

FORMATION TOPS	LOG	SAMPLES
ANHY	1192-1232 8091195-1237 806	
TOPEKA	2988-987	2987-986
HEEBNER	3232-1231	3231-1230
TORONTO	3250-1249	3249-1248
LKC	3275-1274	3274-1273
BKC	3508-1505	3507-1506
ARBuckle	3524-1524	3524-1523
RTD	3620-1619	3620-1619

REMARKS: All parties involved recommended that this well be plugged. Laterals might have saved this well but was deemed to high risk.

respectfully submitted,
[Signature]

LEGEND



NOTE Bottom
Packer Failure #1
Test
DST #1
3504 - 48 4'
Zones tested:
1 2 3 Breaks
Arbuckle
Blow: Strong
Times: 45-30-45-30
Rec: 2418' SW
FP: 42-849
BSB- 1110
SIP: 1150-1153
DST #2
3504 - 35 3'
Zone tested:
Arb 1st + 2nd
breaks
Blow: weak died
Times:
60-30-30
Rec: 40' mud
SIP 427 74#
DST #3
3504 - 49
Zone tested:
1st 2nd +
3rd breaks Arbuckle
Blow: weak died
Times 45-45-45-45
Rec: 35' mud with
oil spurs
FP 25-35
SIP 499-359