



**TRILOBITE TESTING, INC.**

# DRILL STEM TEST REPORT

Darrah, John Jay Jr

**32/20S/13W/Barton**

PO Box 2786  
Wichita, Kansas  
67201+2786  
ATTN: Seth Evenson

**Gaunt-Wright # 1-32**

Job Ticket: 62645

**DST#: 4**

Test Start: 2017.09.20 @ 19:39:00

## GENERAL INFORMATION:

Formation: **Arbuckle**

Deviated: No Whipstock: ft (KB)

Time Tool Opened: 20:57:02

Time Test Ended: 00:19:17

Test Type: Conventional Bottom Hole (Initial)

Tester: Ken Swinney

Unit No: 72 Great Bend/18

**Interval: 3557.00 ft (KB) To 3579.00 ft (KB) (TVD)**

Reference Elevations: 1907.00 ft (KB)

Total Depth: 3579.00 ft (KB) (TVD)

1900.00 ft (CF)

Hole Diameter: 7.80 inches Hole Condition: Fair

KB to GR/CF: 7.00 ft

**Serial #: 6755 Inside**

Press@RunDepth: 161.91 psig @ 3558.00 ft (KB)

Capacity: psig

Start Date: 2017.09.20

End Date: 2017.09.21

Last Calib.: 2017.09.21

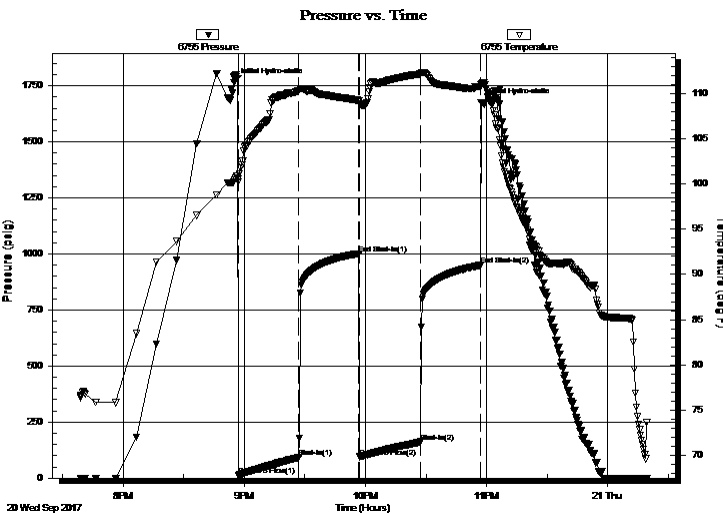
Start Time: 19:39:01

End Time: 00:19:17

Time On Btm: 2017.09.20 @ 20:55:02

Time Off Btm: 2017.09.20 @ 22:57:47

**TEST COMMENT:** I.F. 30 Minutes/ Blow built to 2 1/4 inch then died to 1 1/2 inch  
I.S.I. 30 Minutes/ No blow back  
F.F. 30 Minutes/ Blow built to 2 inch then died to 1 1/2 inch  
F.S.I. 30 Minutes/ No blow back



## PRESSURE SUMMARY

Time (Min.)	Pressure (psig)	Temp (deg F)	Annotation
0	1762.61	100.20	Initial Hydro-static
2	13.01	100.23	Open To Flow (1)
32	92.18	110.30	Shut-In(1)
62	1001.16	109.17	End Shut-In(1)
62	94.69	108.82	Open To Flow (2)
93	161.91	112.17	Shut-In(2)
122	949.00	110.74	End Shut-In(2)
123	1672.90	111.08	Final Hydro-static

## Recovery

Length (ft)	Description	Volume (bbl)
201.00	Muddy Water w/show of oil	2.82
0.00	Mud 10% Water 90%	0.00
124.00	Oil cut Watery Mud	1.74
0.00	Oil 3% Water 47% Mud 50%	0.00

## Gas Rates

	Choke (inches)	Pressure (psig)	Gas Rate (Mcf/d)



**TRILOBITE TESTING, INC.**

# DRILL STEM TEST REPORT

Darrah, John Jay Jr

**32/20S/13W/Barton**

PO Box 2786  
Wichita, Kansas  
67201+2786

**Gaunt-Wright # 1-32**

Job Ticket: 62645

**DST#: 4**

ATTN: Seth Evenson

Test Start: 2017.09.20 @ 19:39:00

## GENERAL INFORMATION:

Formation: **Arbuckle**

Deviated: No Whipstock: ft (KB)

Time Tool Opened: 20:57:02

Time Test Ended: 00:19:17

Test Type: Conventional Bottom Hole (Initial)

Tester: Ken Swinney

Unit No: 72 Great Bend/18

**Interval: 3557.00 ft (KB) To 3579.00 ft (KB) (TVD)**

Reference Elevations: 1907.00 ft (KB)

Total Depth: 3579.00 ft (KB) (TVD)

1900.00 ft (CF)

Hole Diameter: 7.80 inches Hole Condition: Fair

KB to GR/CF: 7.00 ft

**Serial #: 8322 Outside**

Press@RunDepth: 950.34 psig @ 3559.00 ft (KB)

Capacity: psig

Start Date: 2017.09.20

End Date: 2017.09.21

Last Calib.: 2017.09.21

Start Time: 19:39:01

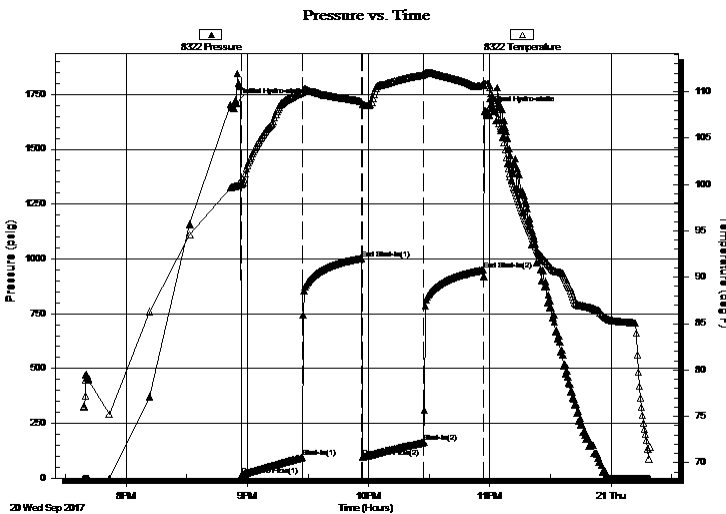
End Time: 00:19:17

Time On Btm: 2017.09.20 @ 20:54:32

Time Off Btm: 2017.09.20 @ 22:58:32

**TEST COMMENT:** I.F. 30 Minutes/ Blow built to 2 1/4 inch then died to 1 1/2 inch  
I.S.I. 30 Minutes/ No blow back  
F.F. 30 Minutes/ Blow built to 2 inch then died to 1 1/2 inch  
F.S.I. 30 Minutes/ No blow back

## PRESSURE SUMMARY



Time (Min.)	Pressure (psig)	Temp (deg F)	Annotation
0	1710.36	99.84	Initial Hydro-static
3	14.92	99.94	Open To Flow (1)
33	93.70	109.97	Shut-In(1)
62	1001.42	108.92	End Shut-In(1)
63	96.00	108.64	Open To Flow (2)
93	163.30	111.83	Shut-In(2)
123	950.34	110.74	End Shut-In(2)
124	1677.24	110.88	Final Hydro-static

## Recovery

Length (ft)	Description	Volume (bbl)
201.00	Muddy Water w/show of oil	2.82
0.00	Mud 10% Water 90%	0.00
124.00	Oil cut Watery Mud	1.74
0.00	Oil 3% Water 47% Mud 50%	0.00

## Gas Rates

	Choke (inches)	Pressure (psig)	Gas Rate (Mcf/d)



**TRILOBITE  
TESTING, INC.**

# DRILL STEM TEST REPORT

**FLUID SUMMARY**

Darrah, John Jay Jr

**32/20S/13W/Barton**

PO Box 2786  
Wichita, Kansas  
67201+2786

**Gaunt-Wright # 1-32**

Job Ticket: 62645

**DST#: 4**

ATTN: Seth Evenson

Test Start: 2017.09.20 @ 19:39:00

## Mud and Cushion Information

Mud Type: Gel Chem

Cushion Type:

Oil API:

deg API

Mud Weight: 8.00 lb/gal

Cushion Length:

ft

Water Salinity:

23000 ppm

Viscosity: 69.00 sec/qt

Cushion Volume:

bbbl

Water Loss: in<sup>3</sup>

Gas Cushion Type:

Resistivity: ohm.m

Gas Cushion Pressure:

psig

Salinity: ppm

Filter Cake: inches

## Recovery Information

Recovery Table

Length ft	Description	Volume bbbl
201.00	Muddy Water w/show of oil	2.820
0.00	Mud 10% Water 90%	0.000
124.00	Oil cut Watery Mud	1.739
0.00	Oil 3% Water 47% Mud 50%	0.000

Total Length: 325.00 ft      Total Volume: 4.559 bbl

Num Fluid Samples: 0

Num Gas Bombs: 0

Serial #:

Laboratory Name:

Laboratory Location:

Recovery Comments: Recovery Resistivity .315 ohms @ 68 deg.

