

# DARRAH OIL

Scale 1:240 Imperial

Well Name: Gaunt-Wright Unit #1-32  
Surface Location: SE/SW/SW/NW Sec 32 T20S R13W  
Bottom Location:  
API: 15-009-26180  
License Number: 5088  
Spud Date: 9/13/2017 Time: 11:45 AM  
Region: Barton County KS  
Drilling Completed: 9/20/2017 Time: 1:00 PM  
Surface Coordinates: 2697' FSL & 585 FWL  
Bottom Hole Coordinates:  
Ground Elevation: 1900.00ft  
K.B. Elevation: 1906.00ft  
Logged Interval: 2800.00ft To: 3573.00ft  
Total Depth: 3573.00ft  
Formation: Arbuckle Dry  
Drilling Fluid Type: Chemical mud

---

---

## OPERATOR

Company: Darrah Oil  
Address: 125 N. Market, Suite #1425  
Wichita, KS 67202  
Contact Geologist: Seth Evenson  
Contact Phone Nbr: (316) 219-3390  
Well Name: Gaunt-Wright Unit #1-32  
Location: SE/SW/SW/NW Sec 32 T20S R13W API: 15-009-26180  
Pool: Infield Field: Hiss Southeast  
State: Kansas Country: United States

---

---

## ELEVATIONS

K.B. Elevation: 1906.00ft Ground Elevation: 1900.00ft  
K.B. to Ground: 6.00ft

---

---

## CONTRACTOR

Contractor: Royal Drilling  
Rig #: 1  
Rig Type: Standard double  
Spud Date: 9/13/2017 Time: 11:45 AM  
TD Date: 9/20/2017 Time: 1:00 PM  
Rig Release: 9/21/2017 Time: 12:00 AM

---

---

## LOGGED BY

Company: Darrah Oil  
Address: 125 N. Market, Suite #1425  
Wichita, Kansas 67202

**OPEN HOLE LOGS**

Logging Company: Pioneer Energy Services  
Logging Engineer: J. Henrickson  
Truck #: 108  
Logging Date: 9/20/2017  
# Logs Run: 3  
Time Spent: 3  
# Logs Run Successful: 3

**LOGS RUN**

Tool	Logged Interval	Logged Interval	Hours	Remarks	Run #
Dual Comp Porc	2700.00ft	3525.00ft	3.00		1
Dual Induction	300.00ft	3553.00ft	3.00		1
Micro Resistivity	2700.00ft	3553.00ft	3.00		1

**LOGGING OPERATION SUMMARY**

Date	From	To	Description Of Operation
9/20/2017	300.00ft	3553.00ft	

**NOTES**

**DST #1**

**Kansas City**  
**3401' - 3510'**  
**(3396' - 3505' corr.)**

**15-30-30-45**

**HP= 1691# - 1661#**  
**FP= 47# - 101#**  
**SIP= 282# - 335#**

**Rec: 1209' GIP**  
**62' Gsy Oil Emulsion (20% Oil)**  
**62' MCGO (45% Oil)**  
**62' HGC Oily Emulsion (20% Oil)**  
**30' Emulsified Oily Mud (10% Oil)**

**BHT= 105 deg F**

**DST #3**

**Arbuckle**  
**3538' - 3558'**  
**(3533' - 3553' corr.)**  
**15-30-45-60**

**HP= 1777# - 1765#**  
**FP= 20# - 66#**  
**SIP= 537# - 382#**

**Rec: 713' GIP**  
**30' GO (80% Oil)**

**DST #2**

**Arbuckle**  
**3501' - 3540'**  
**(3496' - 3535' corr.)**

**30-30-30-30**

**HP= 1756# - 1716#**  
**FP= 17# - 29#**  
**SIP= 43# - 42#**

**Rec: 139' GIP**  
**45' G&OCM (30% Oil)**

**BHT= 101 deg F**

**DST #4**

**Arbuckle**  
**3557' - 3579'**  
**(3552' - 3573' corr.)**  
**30-30-30-30**

**HP= 1763# - 1673#**  
**FP= 13# - 162#**  
**SIP= 1001# - 949#**

**Rec: 124' SOCWM (3% Oil)**  
**201' MCW w/SO**

62' VH&CMO (25% Oil)  
62' HG&MCO (50% Oil)

BHT= 107 deg F


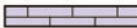






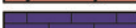

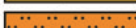
BHT= 112 deg F

**Note:** All formation tops, sample descriptions, drill-stem test intervals, and drill time (except for Anhydrite drill time), have been corrected up by five feet.


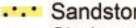

All measurements are taken from KB datum.

Due to poor permeability and/or pressure depletion within potentially productive formations, as indicated by drill-stem tests; it was determined that the Gaunt-Wright Unit #1-32, should be plugged and abandoned as a dry-hole without further testing through production casing.

**ROCK TYPES**

 Coal	 Lmst fw7>	 Shblk	 Ool grnst
 Dolsec	 Mrlstcalc	 Shcol	 Chtcongl
 Lmst fw<7	 Shgy	 Slst	

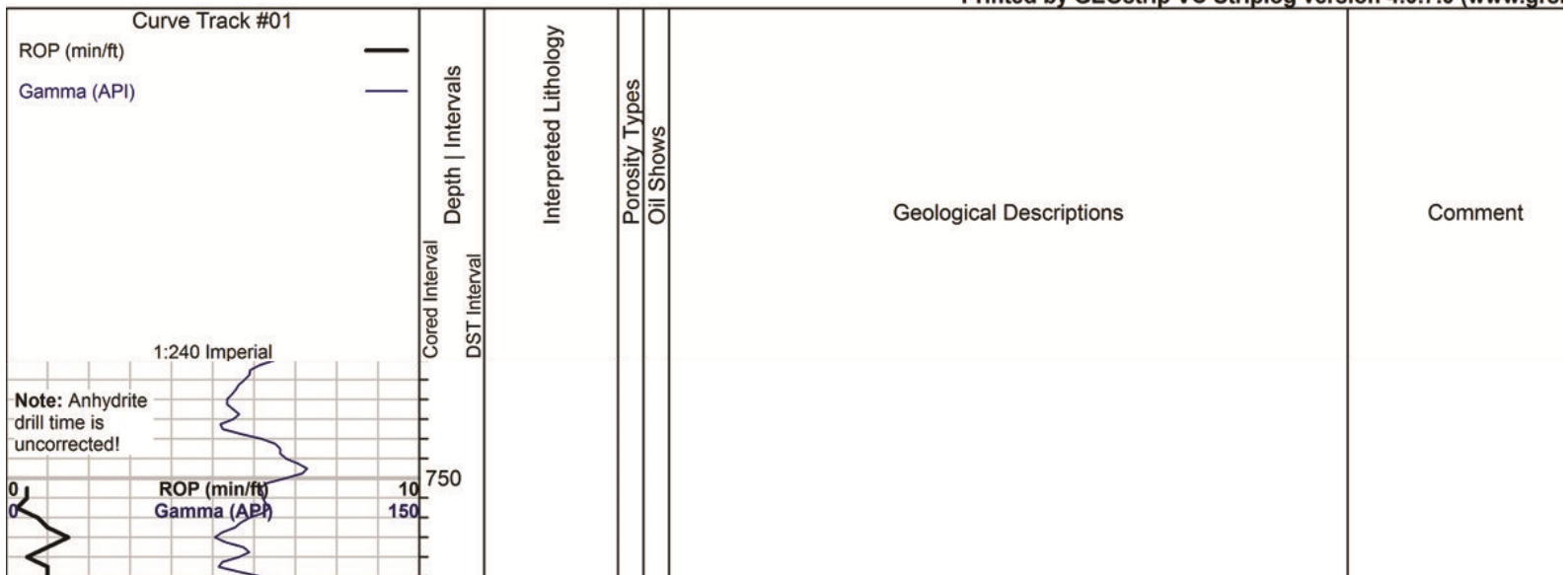
**ACCESSORIES**

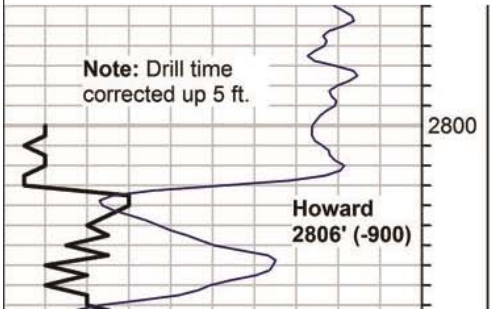
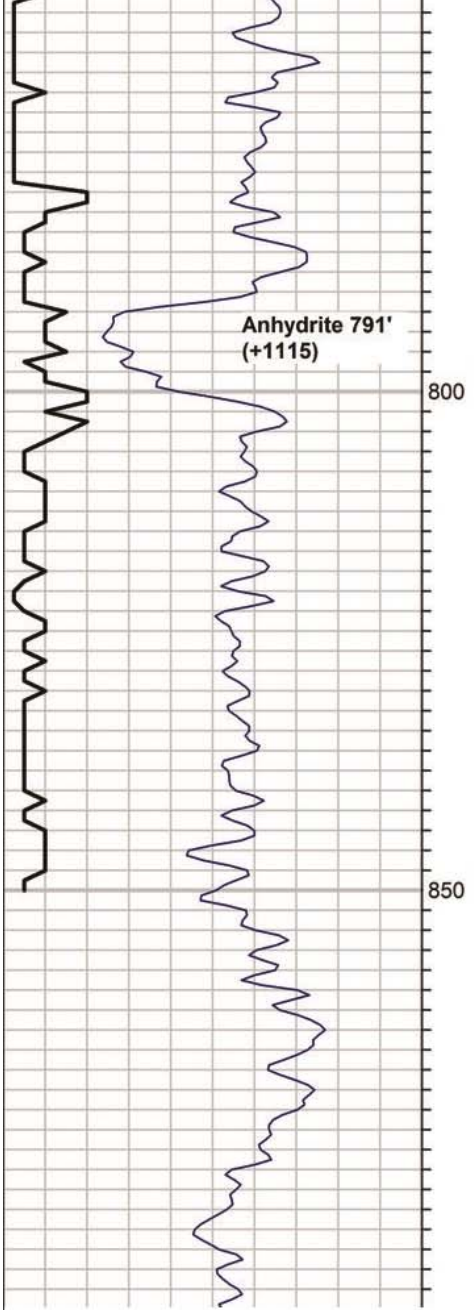
<b>MINERAL</b>	<b>FOSSIL</b>	<b>STRINGER</b>
P Pyrite	F Fossils < 20%	 Dolomite
^ Siliceous	G Gastropod	 Sandstone
\ Bitumenous material/ce	o Oolites	 Shale
△ Chert White		

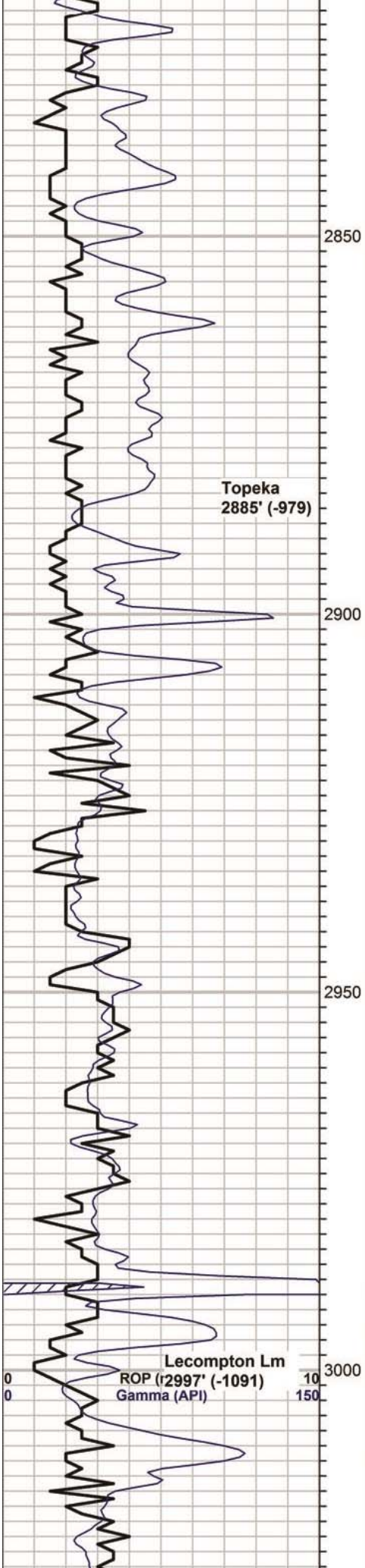
**OTHER SYMBOLS**

<b>POROSITY TYPE</b>	<b>OIL SHOWS</b>
x Intercrystalline	● Even Stn
φ Interoolitic	● Spotted Stn 50 - 75 %
V Vuggy	● Spotted Stn 25 - 50 %
P Pinpoint	○ Spotted Stn 1 - 25 %
∟ Moldic	○ Questionable Stn
O Organic	D Dead Oil Stn
F Fracture	■ Fluorescence
e Earthy	
☐ Fenestral	

Printed by GEOstrip VC Striplog version 4.0.7.0 (www.grsi)







Topeka  
2885' (-979)

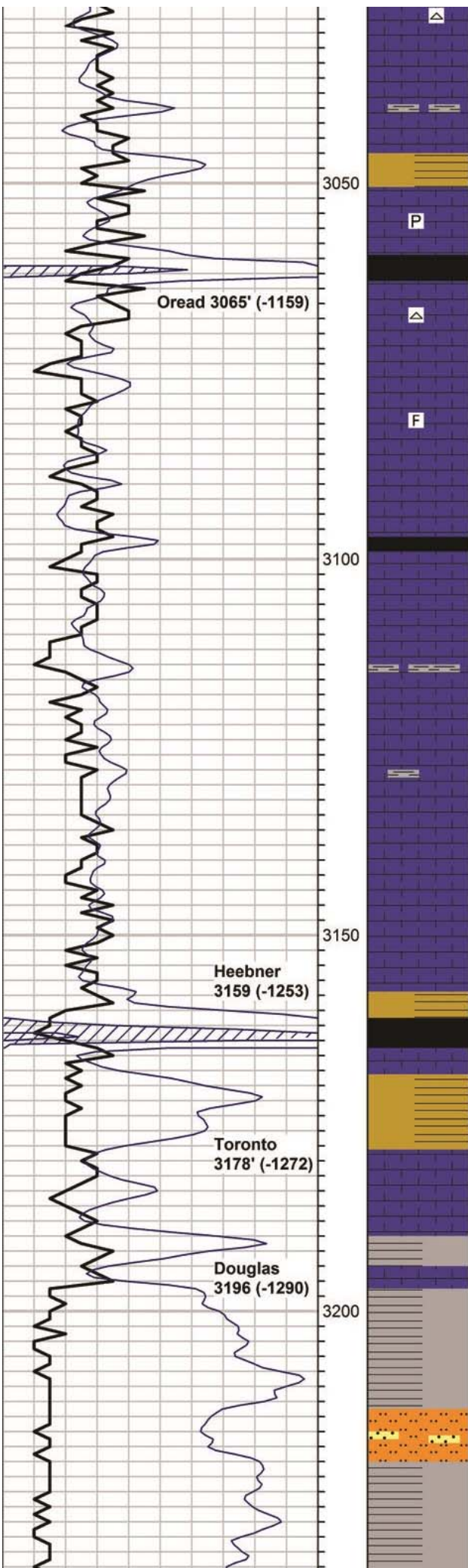
Lecompton Lm  
ROP (#2997' (-1091)  
Gamma (API)

**2985'-2995':** Lms, gry, much tan, fn xtln, tite, dns. No vis poro. Trc of highly foss chrt, and trc blk carb shale.

**2995'-3005':** Lms, tan to gry, foss, vfn-fn xtln, tite, vpr-no vis poro. A few pcs chrt, gry to wht, opaque, shrp & frsh. Also, 1 loose crs, sub rnd qtz grain.

**3005'-15':** Lms, gry, fn xtln, sli foss, tite, vpr-no vis poro. Some chrt, foss, shrp & frsh.

**3015'-25':** Lms, gry, vfn-fn xtln, tite, vpr-no vis poro, a few pcs lms w/xtln pyrite included. Some chrt, shrp & frsh. A few pcs shale, gry & blu/gry.



**3025'-35':** Lms, gry, vfn xtn, sli foss, tite. Also, some tan to off-wht lms, sli chky. All vpr-no vis poro. Increase in gry shales.

**3035'-45':** Lms, gry to tan, vfn xtn, foss, hrd res, vpr-no vis poro. A few pcs reddish to maroon, and blk shale.

**3045'-55':** Lms, gry, fn xtn, tite, pr-no vis poro. Few-no allchms, rough text.

**3055'-65':** Lms, gry, some tan, fn xtn, pr-no vis poro. Some chrt, gry, shrp & frsh.

**3065'-75':** Lms, lt gry to off-wht, vfn xtn, w/scat pyrite mineral inclusions, tite, no vis poro. Also, a few pcs red/brwn earthy shale.

**3075'-85':** Lms, brwn, vfn xtn, hrd, tite, no vis poro. Much, gry lms, some ratty, all no vis poro. Some gry and lt grn shale, also chrt, shrp & frsh.

**3085'-3095':** Lms, tan-lt gry, vfn xtn, sft-med res, foss, sli chky, ratty to mealy looking. No vis intr-xtln poro, vpr-no vis poro. Increase in shales, mstly gry. Trc blk, sli carb shale.

**3095'-3105':** Shale, blk, sli carb, blk. Mstly lms, gry & tan, vfn-fn xtn, hrd, tite, some sli foss, no vis poro. Trc blk chrt, shrp & frsh.

**3105'-15':** Lms, lt gry to some gry, micro, mst vfn xtn, hrd res, mst few vis allchms, no vis poro. A few pcs, blk chrt as abv. Also, shale, drk gry-blk, some sli carbonaceous.

**3115'-25':** Lms, gry-tan, vfn xtn, hrd res, vpr-no vis poro, few allchms. Somes shale, blk carbonaceous.

**3125'-35':** Lms, lt gry, also some gry & tan, mst vfn xtn, mst vry few-no allchms, hrd res, pr-no vis poro. Trc gry chrt, shrp & frsh.

**3135'-45':** Shale, drk gry, fissile, much red/brwn to maroon, sli earthy, trc sea grn. Mstly, lms, tan, vfn xtn, tite, vpr-no vis poro.

**3145'-55':** Shale, drk gry, maroon, a few red/brwn, and yell/grn, trc drk prpl. Much lms, tan, micro-vfn xtn, no vis poro.

**3155'-65':** Lms, gry-tan, micro-vfn xtn, vpr-no vis poro. Mstly shale, as above.

**3165'-75':** Lms, lt gry-crm, vfn xtn, pr-no vis poro. Much shale, red/brwn, maroon, gry, some blk sli carbonaceous, trc blu/gry.

**3175'-85':** Lms, gry-tan, vfn xtn, no vis poro, some gry sli shaley lms. Much shale, gry, maroon, & blk carbonaceous, a few blu/gry to sli grnish.

**3185'-3195':** Lms, crm-gry, vfn-fn xtn, a few foss, mst pr-no vis poro, w/no allchms. Smpl mstly shale, as above.

**3195'-3205':** Lms, crm, some tan, vfn xtn, some chky, vpr-no vis poro. A few pcs wht chlk.

**3205'-15':** Lms, tan, some crm, sli chky, vfn xtn, sft-med res, pr-no vis poro.

**3215'-25':** Shale, maroon, sli earthy, also gry, platy. Mstly lms, tan to crm, vfn xtn, med-hrd res, no vis poro.

**3225'-35':** Shale, maroon, gry, a few pcs blk carbonaceous. A few pcs shaly lms. Mstly lms, crm to tan, vfn xtn, pr-no vis poro.

**3335 cont':** a couple poslms abndt small rnd wht ooids, w/hvy blk asphalticstn in abndt intr-ool vugs, gry lstr, poss travertine re-mineralization, crs calcite xtl attached. Smpl catchr smelled gas from flow line.

**3345 cont':** A few pcs lms gry, micro xtn, scat shllw intr xtn disltion to foss cast vugs in tite matrix, fr scat blk lv stn, VSSFO on brk, blk stky oil drpits on brk. SSG, bubbles on brk, Vpr overall poro, pr-no perm apparent, Fluor 5% pcs or less. Sli-fr odr, Wk shw.

**3355' cont':** 1 pc lms drk gry, fn xtn, brtl/crmbly, fr even blk stn in fr-gd intr-xtln poro. fr-gd grsy lstr on brk.

**Shrt smpl @ 3360':** Lms, gry, ool, vfn xtn, med-hrd res, fr-gd stn in fr scat intr-xtln & intr-ool dissolution vugs, gd grsy lstr, trc FO. A few pcs hrd res, blk, w/fr-gd oomldc vugularporo, hvy blk sli asphaltic stn and sli grsy lstr. Fr-gd vulgur & pr intr xtn poro in pcs w/shw. Mst pcs, abndly ool, non-vugular, vpr-no vis poro. scat sply dull fluor in approx 10-15% pcs, sli odr.

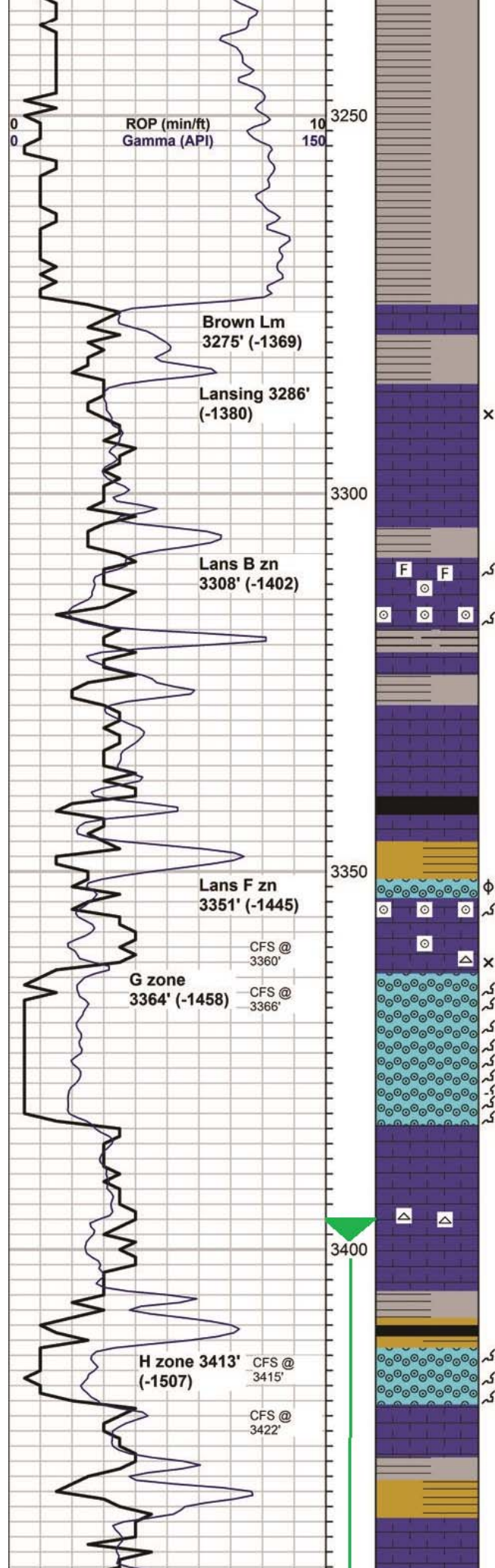
**3360' CFS 15 min:** Mstly lms, lt gry, vfn xtn, dns non-allchmcl, NS. A few pcs w/shw as abv. A couple pcs w/fr-gd blk stn in gd intr ool vugular poro, fr grsy lstr. Probably drilled past shw.

**3360' CFS 30 min:** Lms, crm-tan, some lt gry, micro-vfn xtn, tite. A few pcs gry lms, abndtly ool w/fr-gd intr-ool vugs, gd blk stn in vugs, fr-gd grsy lstr, VSSFO & trc gas. Some shale, gry, red/brwn, trc blk.

**3366' CFS 45 min:** Lms, mstly, lt gry-tan micro to vfn xtn, no vis poro. Some brwn vfn xtn, oomldc vugular lms as abv, fr-gd vugular poro, NS.

**3415' CFS 60 min:** Lms, crm to lt gry, vfn xtn, oolc & oomldc vugular, sli to FSFO, brown drpits FO upon brk. No stn noted in fr vugular poro & fr intr-ool poro. Internal vugs contain drpits of FO. Differs from brown, barren, oomoldic lms of the G zone. Most of sample is lms, gry, micro-vfn xtn, hrd, dns, non-oolitic, no vis poro. Sli odor in sample.

**3422' CFS 45 min:** Lms, lt gry to tan, mst oolc, with vry sparse scattered oomldc vugs, hrd, tite,



3235'-45': Siltstone, gry, firm, vry shaley. A few pcs shaley, vfn grained SS, vpr-no vis poro, NS. Much shale.

3245'-55': Shale, gry, sft, platy. Some lt gry SS, to siltstone, hrd as above. A few pcs lms, brwn to sli yell/brwn, micro-vfn xtln, hrd, tite, no vis poro.

3255'-65': Shale, gry, sft.

3265'-75': Shale, gry, sft, and some silty gry shale.

3275'-85': Shale, gry.

3285'-3295': Shale, gry-drk gry, as abv. Also, a couple pcs gry vfn xtln, shaley, lms, hrd, no vis poro.

3295'-3305': Lms, off-wht to crm, micro-vfn xtln, hrd res, mst, non-allchmcl, no vis poro. Some pcs chiky. A couple pcs, sli chiky lms w/scat fr lt brwn stn on rare surfc dissolution vugs, fr cut and wk bloom on brk, vpr vugular poro, no vis intr-xtln poro. Vry wk shw.

3305'-15': Lms, crm to gry, micro-vfn xtln, vpr-no vis poro, mst non-allchmcl. 1 pc brwn, highly foss lms.

3315'-25': Lms, tan-lt gry, micro-vfn xtln, mst hrd res, vpr-no vis poro. A few pcs lms w/scat shllw, intr-xtln surfc vugs, gd scat brt wht fluor, in about 3% pcs, fr blm on brk, mst no cut. Little to no vis stn on pcs w/shw. 1 pc lms gry, vfn xtln, vry hrd res, rare scat rnd vugs, rare scat brwn stn in vugs, sli gry lstr, vry pr overall poro. Sli odr in smpl.

3325'-35': Lms, brwn, vfn xtln, abndly oomldc vugular, shallw oomldc vugs, hrd, pr-fr intr xtln & fr-gd vugular poro, NS. Several pcs lms tan-crm, micro xtln, w/fr-gd uneven lt brwn lv surface stn, rare scat stn in pc w/rare wk fossil moldic vugular poro, lv drk brwn stn on brk. Fr brt fluor in 1% or less pcs. Sli odr. Shw probably from abv oomldc vugular lms.

3335'-45': Lms, gry, vfn xtln, hrd res, tite. Some w/scat ooids, no vis poro. Also, crm-lt gry lms, as abv.

3345'-55': Lms, gry to drk gry, ool, vfn xtln, med res, rare scat intr-ool vugs. Dull yell/grn fluor in 10% pcs, sli odr. Scat blk lv stn in a few pcs, some dead blk gilsonite stn in edges and fractures of some pcs. Sli odr. New zone.

3360'-65': Lms, lt gry to tan, micro to vfn xtln, occasionally, ool, dns, pr-no vis poro mst pcs. Scat, sprs, lt lv stn in scat rare vry shallw intr-xtln vugs and edges. Vry sli odr. Wk shw, no vis perm, vry wk to no intr-xtln poro, vpr vugular poro. Mst pcs no vis poro & NS.

3365'-75': No sample

3375'-85': Lms, tan-lt brwn, vfn xtln, abndly oomldc vugular, fr intr-xtln & gd vugular poro. NS. Mstly lms, crm, vfn xtln, tite.

3385'-3395': Lms, lt brwn-tan, fn xtln, abndly oomldc vugular, gd vugular & fr intr xtln poro, mst ooids have been totally dissolved a few partially dissolved in a few pcs. Gd yell mineral fluor, no cut, NS.

3395'-3405': Lms, gry, vfn xtln, tite, mst vpr-no vis poro, loosing oomldc poro, mst non allchmcl. Increase in gry & some grnish shales.

3405'-15': Lms, gry, vfn xtln, hrd, tite, dns, few-no allchms, vpr-no vis poro. A few pcs chrt, shrp & frsh.

3422'-25': Lms, lt gry, tan, gry, mstly, vfn xtln, non-allchmcl, hrd tite, vpr-no vis poro. Some lms, tan-gry, ool to sli oomldc vugular, mstly tite pr vis poro. Some lms, crm to lt brwn, oomldc vugular, mst all barren, likely slough from above. Drilled past show.

3425'-35': Lms, gry-lt gry, tan, vfn xtln, hrd res, vpr-no vis poro, tite. Mst few to no vis allchms.

3435'-45': Lms, crm-gry, micro-vfn xtln, a few oolts, all vpr-no vis poro. Incc

pr-vry pr overall porosity. A few pcs w/sli-FSGFO on brk, prob frm above; likely getting titer at base of zone, losing vugular poro. Much non-oolitic, tan to crm, vfn-xtln lms, tite, vpr-no vis poro. Some blk carb, blkly shale. 1 drplt FO floating in sample cup.

**3455' CFS 30 min:**  
Lms, tan-brwn, micro-xtln, w/scat vugs & fr-gd stn, as abv. A few pcs gry, ool, sli oomldc vugular lms, hrd res, pr overall vugular & intr-xtln poro. Fr gry lust, & VSSFO on brk. Micro-xtln pcs with scat dissolution vugs are vry hrd and tite, but release VSSGO on brk. Vry pr-no matrix poro. Fr-gd stn in approx 30% of pcs, fr odr.

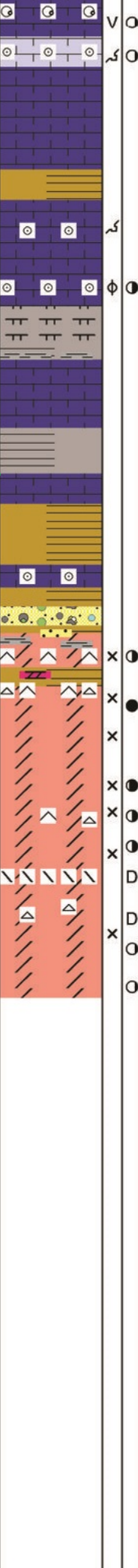
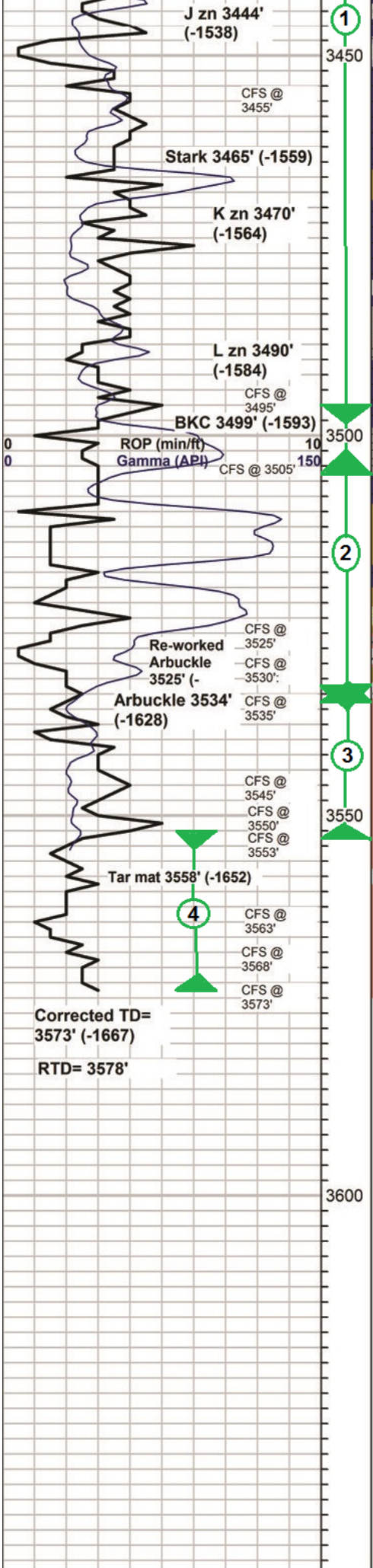
**3525' CFS 45 min:**  
A coupl pcs dolo, lt gry, vry fr- micro xtln, hrd res, scat wk stn, fr scat, yell fluor, fr slw strming cut. FSFO w/acid. Drplts of lt brwn FO escape when acid is add. Vry hrd, tite, silicified, no vis poro. Vry shaley, gm xtln dolo. Fr odr.

**3495' CFS 45 min:**  
Lms, gry, micro-vry fn xtln, abndly ool, irreg sized ooids, better cmntd than abv pcs, similar ooids though, mst med-hrd res, fr intr-ool vugular poro, gd blk stn in vugs, sli gry lust, SSFO on brk. Sli odr in cup. A few drplts of brwn FO floating in cup! A few pcs lt brwn, vry fn xtln, ool lms, w/fr intr-ool vugular poro, brtl-med res, gd even stn & full sat, gd gry rainbw lust, especially on brk, appears to have better vugular connectivity, fr to gd overall poro in lt brwn pcs.

**CFS @ 3530' 60 min:**  
Many oil droplets floating in cup! Dolo, drk brwn-brwn, highly silicified to qtzitic. A few vfn xtln, highly silicified, no vis poro. Abndt clr re-mineralized qtz, some banded, sli agatized, & many pcs w/dolo attached; could indicate presence of larger sized vugs. Several pcs qtz/qtzite have gd even brwn stn. 1 pc w/GSFO, vry gssy FO from intr-xtln poro, upon sqz. Gd odr, gd brt yell fluor in approx. 50% smpl. More qtz than dolo in this sample. Several pcs wht chrt, sli weathered w/scat blk to brwn stn in shallow vugs.

**CFS @ 3535' 60 min:**  
Dolo, tan-gry, fn rhmbc xtln, hrd res, fr, lt even stn & fr even sat, fr lt gry lstr, SSG on brk. Some drk brwn qtzitic dolo pcs, vry hrd w/SSO. Mst pcs quite hrd & tite, pr overall poro. Gd brt wht fluor in 50% smpl, Fr-gd odr.

**3545' CFS 60 min:**  
Dolo, gry-brwn, med rhmbc xtln, mst w/fr-gd even brwn stn in npnrt intr-xtln poro, mst hrd res, some med res



in gry & marron shales.

**3445'-55':** A few pcs, lms, lt gry, vfn xtlm, foss, med res, fr drk brwn-lt blk stn in fr intr foss/intr-xtlm vugs, numerous gast foss, poss forams also. Fr grsy lstr, sli odr in cup. Mst pcs tite, as abv.

**3455'-65':** Lms, crm, tan, gry, vfn xtlm, hrd, tite, mst, non-allchmcl & vpr-no vis poro. Several pcs w/scat st in rare vugs, and fr grsy lstr, probably from up hole. Fr odr in sample.

**3465'-75':** Lms, crm to gry, micro-vfn xtlm, mst non-allchmcl, tite, no vis poro. Many pcs J zn slough w/shw. A couple pcs of foss lt gry lms w/ stn as seen abv. Looks exactly like what was seen previously. Increase in shales, grn, maroon, drk gry, blk, trc prpl. A few pcs shly lms.

**3475'-85':** Shale, prpl, gry grn, maroon, some mottled as abv. Mstly, lms, tite, as abv. Lms, grading into more ooltc mstly tite, brwn to tan, micro-vfn xtlm, hrd, mst vpr-no vis poro. Probably transitioning into a sli vuggy oomlcl lms w/partially dissolved ooids.

**3485'-3495':** Lms, gry, micro xtlm, med res, abndly ool, w/fr intr ool vugs. Small rnd-sub md ooids, fr drk brwn even stn in intr-ool poro, gd grsy lstr. 1 clst w/irreg sized ooids, med-crs, rnd.

**3495'-3505':** Lms, crm-gry, micro-vfn xtlm, hrd, tite, mst non-allchmcl, vpr-no vis poro. Increase in shales. Appears to have drilled past shw.

**3505'-15':** Much shale, drk gry, maroon, & blu/gry. A few pcs lms, crm-vry lt gry, vry sli grnsh tint. Sli conglmtrc. Mstly lms tan tite from up-hole.

**3515'-25':** Shale, gry, maroon, grn, trc mottled, etc. Much lms, lt gry-crm, tite, as abv. 1 pc highly pyritized shale, vry hrd.

**3530'-35':** Bubbles of gas and drplts of brwn FO float to top of smpl cup when sqz! Highly siliceous dolo brwn, tite, mstly dolomtc qtz & re-mineralized qtz. Med qtz xtls, mst tite w/rare pnpt poro, SSFO, gsy, on sqz. Mst pcs have little effvsnc. Fr-gd brt yell/wht fluor in 35-40% smpl. Fr odr.

**3535'-45':** Dolo, lt brwn to gry, fn xtlm, mst hrd & tite, a couple pcs, w/unifrm sized rhmds, med res, fr intr-xtlm poro, & fr shw grsy lstr on brk, spty lv brwn stn in intr-xtlm poro on brk. Mstly sloughing shale.

**3545'-50':** Dolo brwn-lt gry-tan, fn xtlm, hrd, tite, pr-no vis intr-xtlm poro. Appears much less sat than abv. Mstly non-rhmbc xtlms, fr even dull yell/wht fluor in approx 90% smpl, Gd odr.

**3550'-53':** Dolo, lt gry-brwn, med rhmbc xtlm, mst w/fr-gd intr-xtlm poro. Gd brwn stn in abndt pnpt intr-xtlm vugs. vry gd even sat in approx 50% rhmbc pcs, gd grsy lstr, gd dull yell/wht fluor in about 80% smpl. Gd odr. Many tite pcs, but seems to be increase in rhmbc pcs w/fr-gd intr-xtlm poro. Gd show.

**3553'-63':** Mstly slough from conglomerate. Some dolo, both tite & rhmbc, stnd & xtlm as seem up-hole. a few pcs foss chrt, shrp & frsh, fr odor.

**3563'-68':** Gd odr! Dolo, lt gry, some sli pinkish, vfn xtlm, tite, dns, NS those pcs. Also, lms gry, fn xtlm, med res, pr-fr pnpt intr-xtlm poro. Mst w/lt wk stn & grsy lstr on brk. A few pcs shw transition from tite micr-vfn xtlm lms to fn xtlm lms w/fr brwn matrix in a distinct band. Dull yell fluor & fr-gd strming cut in pcs w/stn, wk-fr bloom. Overall wk show in pr poro. VSSFO in 1 tite piece.

**3568'-73':** Dolo, fn xtlm, gry, med-hrd res, pr-fr vis stn & sat, fr-gd cut on brk, fr-gd dull yell fluor. 1 pc w/Trc FO on brk.

mst lms res, some med res, w/fr intr-xtlm poro. A few rare pcs w/gd intr-xtlm poro, fr-gd steaming cut in pcs w/less vis stn & sat, gd even yell fluor in about 90% smpl, mst pce well sat. Overall, intr-xtlm poro appears to have imprvd a bit Gd odr.

**3550' CFS 45 min:**  
Dolo, drk brwn, med rhmbc xtlm in tite micro-xtlm silica matrix; vry hrd, no vis poro. Also some dolo, tan, vry fn- fn xtlm, hrd and tite, vry pr-no vis poro, non-rhmbc xtlm, silicified, wk strming cut in tan fn xtlm pcs, could be surfc lust. Gd-vry gd, fst, strming cut in drk brwn, hrd res pcs, mst of which have gd even stn & sat. Rhmbc pcsw/fr-gd inter-xtlm poro in about 50% of pcs, gd stn in these pcs, probably drilled past.

**3553' CFS 60 min:**  
Dolo, tan-brwn, rhmbc to vry fn xtlm, hrd, mst tite, dns matrix, rhmbc pcs, have fr-gd brwn stn, mst inter-xtlm poro is cmntd off w/silica matrix. Mst tite pcs have wk scat yell/grn fluor & vry wk to no cut. Smpl shws a transition from gr rhmbc xtlm dolo, to tite dns, fn xtlm, non-rhmbc dolo. Gd yell/wht fluor in approx 75% pcs, some pcs w/poss mineral fluor. Less overall sat, but prob due mstly to tite rocks.

**3563' CFS 60 min:**  
Dolo, tan to lt gry, some lt pnksh tint, vry fn xtlm, hrd res sli silicified, mst vry tite, dns, no vis poro. A few w/blk asphaltic stn atchd in distinctive bndary. Transitional boundary from rhmbc xtlm dolo, w/inter-xtlm poro, to more tite, dns dolo, w/no inter-xtlm poro. A few tite dns pcs, w/scat lt brwn stn on surfc, vry pr-no vis inter-xtlm poro, poss sli fract poro. Much shrp, frsh, wht chrt in smpl.

**3568' CFS 60 min:**  
Fr-gd odr. Dolo, gry, fn xtlm, med-hrd res, pr-fr intr-xtlm poro, a few pcs, w/fr larger intr-xtlm vugs & rough bmpy text, fr-gd grsy lstr on brk, gd odr on brk, SSG & VSSFO on brk, uneven dull yell fluor, fr cut on brk. Better shw than abv.

**3573' CFS 60 min:**  
Dolo, gry, fn xtlm, some sft, semi-sucrosic, w/gd rainbow grsy lstr on brk. One pc spty brwn stn in intr-xtlm vugs. Dull yell/grn even fluor, mst pcs, wk strming cut on brk, but gd strming cut in better sat pcs. Gd odr.