



GEOLOGIST'S REPORT

OPERATOR MURFIN DRILLING COMPANY, INC.
LEASE CWA 'E' # 1-17

ELEVATIONS
K8 3255 FT.
K9 3256 FT.

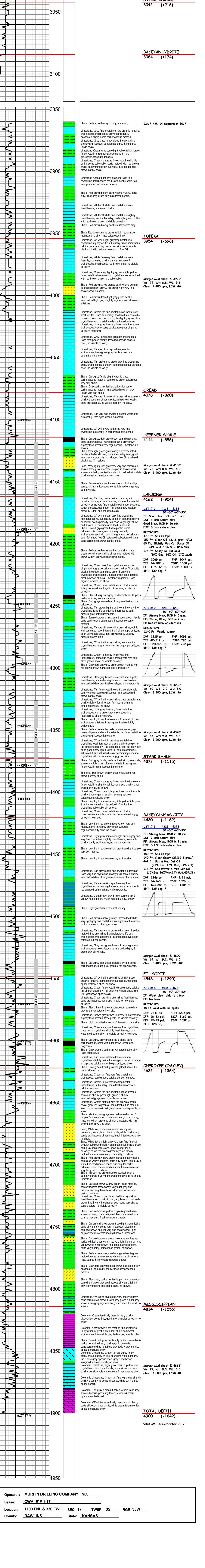
LOCATION 1100 FNL & 330 FWL
SEC. 17 TWPSP 3S RGE 35W
COUNTY RAWLINS STATE KANSAS
FIELD WILDCAT

CONTRACTOR Murfin Drilling Co.
COMMENCED 12 Sept. 2017
MUD DISPLACED 3505 MUD TYPE Chem/B
DRILLING TIME KEPT FROM 3680 TO 4900
SAMPLES SAVED FROM 3680 TO 4900
SAMPLES EXAMINED FROM 3680 TO 4900

GEOLOGICAL SUPERVISION FROM 3753 TO 4900
GEOLOGIST ON WELL Paul Gunzeman

FORMATION NAME LOG TOP DATUM TOP DATUM SAMPLE DATE
Stone Corral 3040 +218 3042 +216
Base/Anhydrite 3082 +172 3084 +174
Topeka 3956 -698 3964 -706
Hebner Shale 4114 -956 4120 -962
Lansing 4160 -902 4164 -908
Baber/Kansas City 4418 -1160 4120 -1162
Fort Scott 4549 -1291 4548 -1290
Cherokee 4622 -1356 4618 -1360
Mississippian 4814 -1556 4820 -1562
Total Depth 4902 -1644 4900 -1642

REMARKS
API 15-153-21200-00-00
Drilling Fluids: Morgan Mud, Inc. (David Lines, engineer)
Drill Stem Testing: Triobite Testing, Inc. (James Winder, tester)
Gas Trailer: No Gas Trailer
Reserve Pit Chlorides: 7.900 PPM



Operator: MURFIN DRILLING COMPANY, INC.
Lease: CWA 'E' # 1-17
Location: 1100 FNL & 330 FWL SEC. 17 TWPSP 3S RGE 35W
County: RAWLINS State: KANSAS