

ROGER L. MARTIN

INDEPENDENT PETROLEUM GEOLOGIST 316-250-6970

GEOLOGIST'S REPORT

DRILLING TIME AND SAMPLE LOG

Table with 4 columns: COMPANY, LEASE, FIELD, LOCATION, SECTION, COUNTY, CONTRACTOR, SPUD, RTD, NO OPEN HOLE E-LOGS, ELEVATIONS, MEASUREMENTS ARE ALL, API, CASING, SURFACE, PRODUCTION.

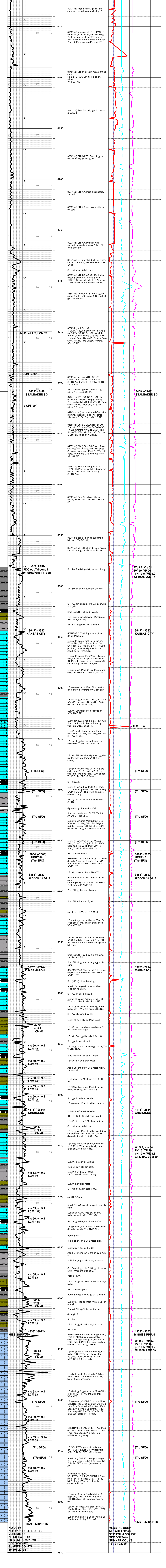
Table with 4 columns: FORMATION TOPS, LOG, SAMPLES, CHRONOLOGY. Includes entries for OREAD, HEEBNER, STALNAKER SD, KANSAS CITY, HERTHA, BASE KANSAS CITY, MARMATON, CHEROKEE, MISSISSIPPIAN, MISS CHERT POROSITY, RTD.

REMARKS: The decision was made to P&A the VOG Netahla "C" #3. OES 1st plug @ 875' 35 sx 60/40 Pozmix 4% oil, 3% CC, Pull drill pipe up. Wait Tag Plug @ 719' 2nd plug 575' 35 sx 60/40 Pozmix 4% oil, 3% CC, Pull drill pipe up. Wait Tag Plug @ 415' 3rd plug @ 255' 35 sx 60/40 Pozmix 4% gel 2% CC, 4th plug @ 25' 35 sx 60/40 Pozmix 4% gel 2% CC, 5th plug @ 25' 35 sx 60/40 Pozmix 4% gel 2% CC, 6th plug @ 25' 35 sx 60/40 Pozmix 4% gel 2% CC. Mousehole 20 sx. Total - 185 sx. Finished 2:55 AM.

Respectfully submitted, Roger L. Martin, Geologist (Website)

(Page Length = 105')

LITH DRILLING TIME ROP MIN/FT DST SAMPLER DESCRIPTION



NO DST/ NO OPEN HOLE E-LOGS VESS OIL CORP NETAHLA "C" #3 3835'FNL & 330' FWL SEC 5-34S-4W SUMNER CO., KS 15-191-22796 VESS OIL CORP NETAHLA "C" #3 3835'FNL & 330' FWL SEC 5-34S-4W SUMNER CO., KS 15-191-22796