

KANSAS CORPORATION COMMISSION
OIL & GAS CONSERVATION DIVISION

Form must be Typed
Form must be signed

TEMPORARY ABANDONMENT WELL APPLICATION

All blanks must be complete

OPERATOR: License#
Name:
Address 1:
Address 2:
City: State: Zip:
Contact Person:
Phone:
Contact Person Email:
Field Contact Person:
Field Contact Person Phone:

API No. 15-
Spot Description:
Sec. Twp. S. R.
GPS Location: Lat: Long:
Datum: NAD27 NAD83 WGS84
County: Elevation:
Lease Name: Well #:
Well Type: Oil Gas OG WSW Other:
SWD Permit #: ENHR Permit #:
Gas Storage Permit #:
Spud Date: Date Shut-In:

Table with 7 columns: Conductor, Surface, Production, Intermediate, Liner, Tubing. Rows include Size, Setting Depth, Amount of Cement, Top of Cement, Bottom of Cement.

Casing Fluid Level from Surface: How Determined? Date:
Casing Squeeze(s): to w / sacks of cement, to w / sacks of cement. Date:
Do you have a valid Oil & Gas Lease? Yes No
Depth and Type: Junk in Hole at Tools in Hole at Casing Leaks: Yes No Depth of casing leak(s):
Type Completion: ALT. I ALT. II Depth of: DV Tool: w / sacks of cement Port Collar: w / sack of cement
Packer Type: Size: Inch Set at: Feet
Total Depth: Plug Back Depth: Plug Back Method:

Geological Date:

Table with 4 columns: Formation Name, Formation Top, Formation Base, Completion Information. Rows 1 and 2.

UNDER PENALTY OF PERJURY I HEREBY ATTEST THAT THE INFORMATION CONTAINED HEREIN IS TRUE AND CORRECT TO THE BEST OF MY KNOWLEDGE

Submitted Electronically

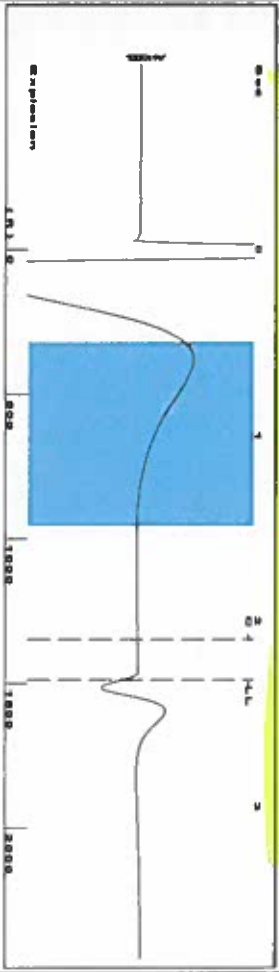
Form with fields: Do NOT Write in This Space - KCC USE ONLY, Date Tested, Results, Date Plugged, Date Repaired, Date Put Back in Service, Review Completed by, Comments, TA Approved: Yes Denied, Date.

Mail to the Appropriate KCC Conservation Office:

Table with 3 columns: District Office #, Address, Phone. Rows 1-4.

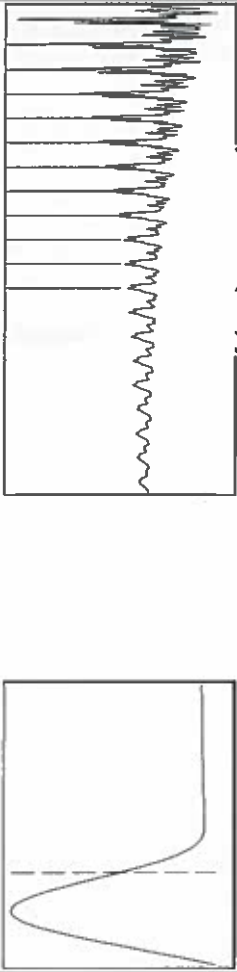
Shot @ 300'

Group: LIBERAL T AND WELLS Well: LESHINSKY 1-23 (acquired on: 12/26/17 13:23:52)



Filter Type High Pass Automatic Collar Count Yes  
 Manual Acoustic Velo 1273.09 f/s Manual JTS/sec 20.0803  
 Time 2.318 sec  
 Joints 46.9179 J/s  
 Depth 1487.30 ft

0.5 to 1.5 (Sec) 1



Analysis Method: Automatic

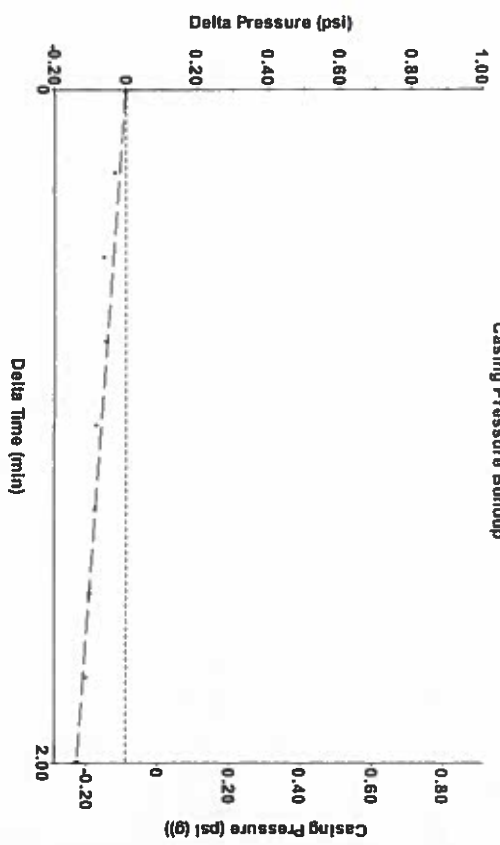
Group: LIBERAL T AND WELLS Well: LESHINSKY 1-23 (acquired on: 12/26/17 13:23:52)

Production	Potential	Casing Pressure	Static
Current	Oil	-0.1 psi (g)	Oil Column Height
Oil	Water	-0.1 psi	MD 0 ft
Water	Gas	2.90 min	
Gas		Gas/Liquid Interface Pressure	
		0.5 psi (g)	
JPR Method	Vogel		
PBHP/SBHP	Production Efficiency		
	0.0		
		Liquid Level Depth	Water Column Height
Oil	40 deg API	1487.30 ft	MD 1301 ft
Water	1.05 Sp.Gr.H2O	Pump Intake Depth	
Gas	0.70 Sp.Gr.AIR	2800.00 ft	
		Formation Depth	
		2800.00 ft	
Acoustic Velocity	1283.26 f/s		Static BHP
			591.8 psi (g)



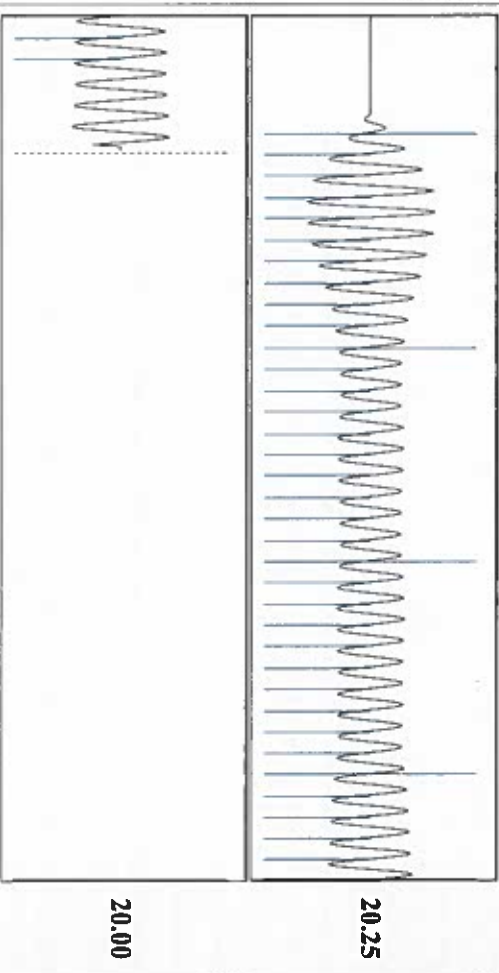
Group: LIBERAL T AND WELLS Well: LESHINSKY 1-23 (acquired on: 12/26/17 13:23:52)

Casing Pressure Buildup



Change in Pressure -0.14 psi FT11249 Range 0 - ? psi  
 Change in Time 2.00 min

Group: LIBERAL T AND WELLS Well: LESHINSKY 1-23 (acquired on: 12/26/17 13:23:52)



Acoustic Velocity 1283.26 f/s Joints counted 37  
 Joints Per Second 20.2407 f/s Joints to liquid level 18.0803  
 Depth to liquid level 1487.3 ft Filter Width 0.272  
 Automatic Collar Count Yes Time to 1st Collar 2.1

Conservation Division  
District Office No. 1  
210 E. Frontview, Suite A  
Dodge City, KS 67801



Phone: 620-682-7933  
<http://kcc.ks.gov/>

Pat Apple, Chairman  
Shari Feist Albrecht, Commissioner  
Jay Scott Emler, Commissioner

Sam Brownback, Governor

January 02, 2018

Katherine McClurkan  
Merit Energy Company, LLC  
13727 Noel Road, Suite 1200  
Dallas, TX 75240

Re: Temporary Abandonment  
API 15-175-21960-00-01  
Leshinsky 1-23  
SW/4 Sec.23-33S-32W  
Seward County, Kansas

Dear Katherine McClurkan:

"Your temporary abandonment (TA) application for the well listed above has been approved. In accordance with K.A.R. 82-3-111 the TA status of this well will expire 01/02/2019.

- \* If you return this well to service or plug it, please notify the District Office.
- \* If you sell this well you are required to file a Transfer of Operator form, T-1.
- \* If the well will remain temporarily abandoned, you must submit a new TA application, CP-111, before 01/02/2019.

You may contact me at the number above if you have questions.

Very truly yours,

Michael Maier"