

KANSAS CORPORATION COMMISSION
OIL & GAS CONSERVATION DIVISION

TEMPORARY ABANDONMENT WELL APPLICATION

OPERATOR: License#
Name:
Address 1:
Address 2:
City: State: Zip:
Contact Person:
Phone:
Contact Person Email:
Field Contact Person:
Field Contact Person Phone:

API No. 15-
Spot Description:
Sec. Twp. S. R.
GPS Location: Lat: Long:
Datum:
County: Elevation:
Lease Name: Well #:
Well Type:
Spud Date: Date Shut-In:

Table with 7 columns: Conductor, Surface, Production, Intermediate, Liner, Tubing. Rows include Size, Setting Depth, Amount of Cement, Top of Cement, Bottom of Cement.

Casing Fluid Level from Surface: How Determined? Date:
Casing Squeeze(s): to w / sacks of cement, to w / sacks of cement. Date:
Do you have a valid Oil & Gas Lease?
Depth and Type: Junk in Hole at Tools in Hole at Casing Leaks:
Type Completion: ALT. I ALT. II Depth of: DV Tool: Port Collar:
Packer Type: Size: Inch Set at: Feet
Total Depth: Plug Back Depth: Plug Back Method:

Geological Data:

Table with 4 columns: Formation Name, Formation Top, Formation Base, Completion Information. Rows 1 and 2.

UNDER PENALTY OF PERJURY I HEREBY ATTEST THAT THE INFORMATION CONTAINED HEREIN IS TRUE AND CORRECT TO THE BEST OF MY KNOWLEDGE

Submitted Electronically

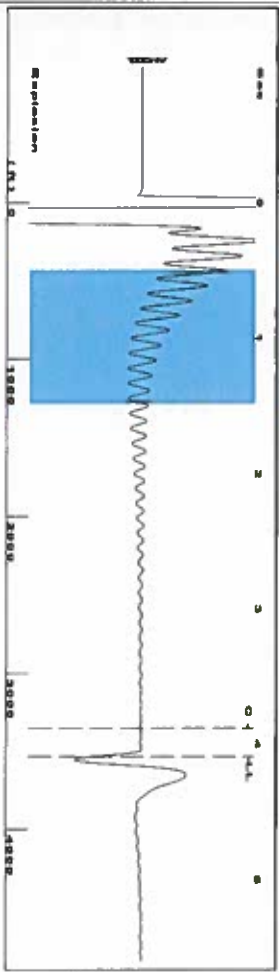
Do NOT Write in This Space - KCC USE ONLY
Date Tested: Results: Date Plugged: Date Repaired: Date Put Back in Service:
Review Completed by: Comments:
TA Approved: Yes Denied Date:

Mail to the Appropriate KCC Conservation Office:

Table with 2 columns: Office Address, Phone. Rows for District Office #1, #2, #3, #4.

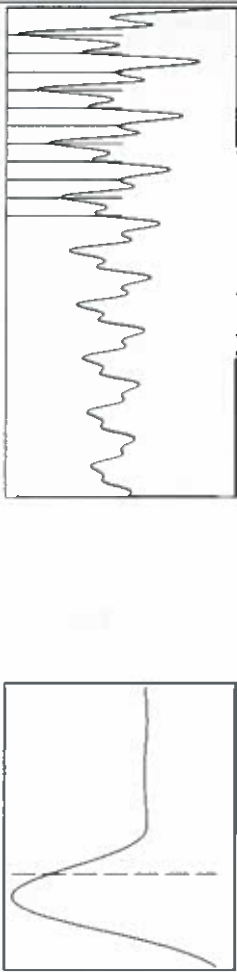
Shot @ 300' MR

Group: LIBERAL T AND WELLS Well: WIGGAINS 12-12 (acquired on: 12/12/17 11:07:10)



Filter Type High Pass Automatic Collar Count Yes  
 Manual Acoustic Vel 1727.52 ft/s Manual JTS/sec 27.248  
 Time 4.096 sec  
 Joints 111.525 Jts  
 Depth 3535.33 ft

[ 0.5 to 1.5 (Sec) ]



Analysis Method: Automatic

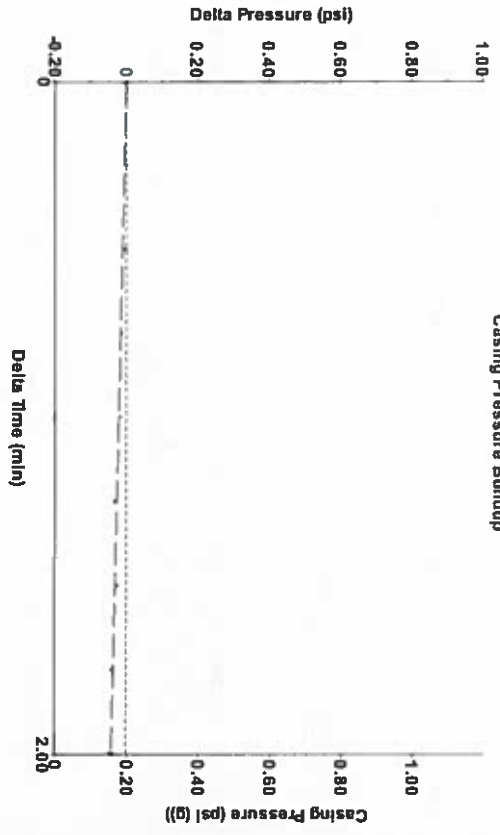
Group: LIBERAL T AND WELLS Well: WIGGAINS 12-12 (acquired on: 12/12/17 11:07:10)

Production	Potential	Casing Pressure	Static
Oil **	BBL/D	0.2 psi (g)	Oil Column Height
Water **	BBL/D	-0.041 psi	MD 0 ft
Gas **	Msc/D	2.00 min	
IPR Method	Vogel	Gas/Liquid Interface Pressure	
PBHP/SBHP	**	1.2 psi (g)	
Production Efficiency	0.0		
Oil 40 deg API		Liquid Level Depth	Water Column Height
Water 1.05 Sp.Gr.H2O		3535.33 ft	MD 3329 ft
Gas 0.55 Sp.Gr.AIR		Tubing Intake Depth	
		6864.00 ft	
		Formation Depth	
		6864.00 ft	
Acoustic Velocity	1726.24 ft/s		Static BHP
			1514.6 psi (g)



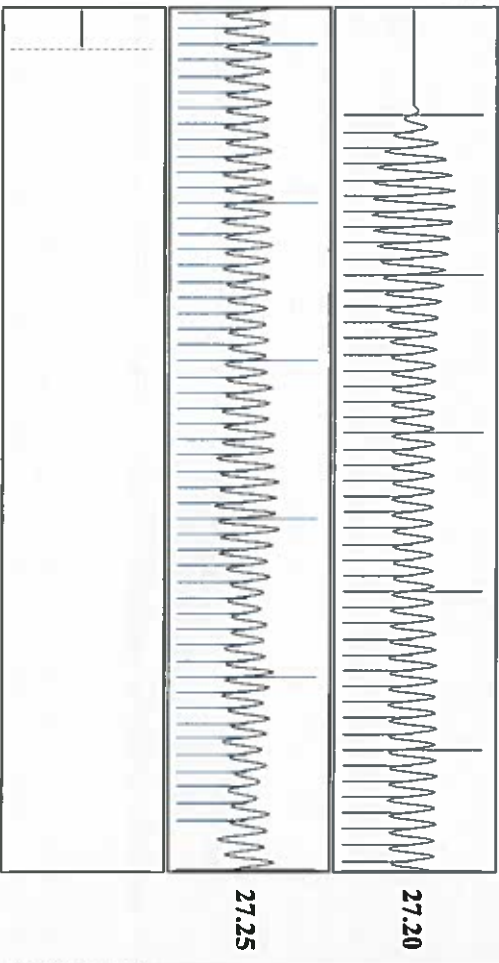
Group: LIBERAL T AND WELLS Well: WIGGAINS 12-12 (acquired on: 12/12/17 11:07:10)

Casing Pressure Buildup



Change in Pressure -0.04 psi PT11249  
 Change in Time 2.00 min Range 0 - ? psi

Group: LIBERAL T AND WELLS Well: WIGGAINS 12-12 (acquired on: 12/12/17 11:07:10)



Acoustic Velocity 1726.24 ft/s Joints counted 99  
 Joints Per Second 27.2277 Jts/sec Joints to liquid level 111.525  
 Depth to liquid level 3535.33 ft Filter Width 25.248  
 Automatic Collar Count Yes Time to 1st Collar 29.248 3.884

December 19, 2017

Katherine McClurkan  
Merit Energy Company, LLC  
13727 Noel Road, Suite 1200  
Dallas, TX 75240

Re: Temporary Abandonment  
API 15-189-22802-00-00  
Wiggains 12 12  
SE/4 Sec.12-35S-36W  
Stevens County, Kansas

Dear Katherine McClurkan:

"Your temporary abandonment (TA) application for the well listed above has been approved. In accordance with K.A.R. 82-3-111 the TA status of this well will expire 12/19/2018.

- \* If you return this well to service or plug it, please notify the District Office.
- \* If you sell this well you are required to file a Transfer of Operator form, T-1.
- \* If the well will remain temporarily abandoned, you must submit a new TA application, CP-111, before 12/19/2018.

You may contact me at the number above if you have questions.

Very truly yours,

Scott Alberg"