

KANSAS CORPORATION COMMISSION
OIL & GAS CONSERVATION DIVISION

TEMPORARY ABANDONMENT WELL APPLICATION

OPERATOR: License#
Name:
Address 1:
Address 2:
City: State: Zip:
Contact Person:
Phone:
Contact Person Email:
Field Contact Person:
Field Contact Person Phone:

API No. 15-
Spot Description:
Sec. Twp. S. R.
GPS Location: Lat: Long:
Datum: NAD27 NAD83 WGS84
County: Elevation:
Lease Name: Well #:
Well Type: Oil Gas OG WSW Other:
SWD Permit #: ENHR Permit #:
Gas Storage Permit #:
Spud Date: Date Shut-In:

Table with 7 columns: Conductor, Surface, Production, Intermediate, Liner, Tubing. Rows include Size, Setting Depth, Amount of Cement, Top of Cement, Bottom of Cement.

Casing Fluid Level from Surface: How Determined? Date:
Casing Squeeze(s): to w / sacks of cement, to w / sacks of cement. Date:
Do you have a valid Oil & Gas Lease? Yes No
Depth and Type: Junk in Hole at Tools in Hole at Casing Leaks: Yes No Depth of casing leak(s):
Type Completion: ALT. I ALT. II Depth of: DV Tool: w / sacks of cement Port Collar: w / sack of cement
Packer Type: Size: Inch Set at: Feet
Total Depth: Plug Back Depth: Plug Back Method:

Geological Date:

Table with 4 columns: Formation Name, Formation Top, Formation Base, Completion Information. Rows 1 and 2.

UNDER PENALTY OF PERJURY I HEREBY ATTEST THAT THE INFORMATION CONTAINED HEREIN IS TRUE AND CORRECT TO THE BEST OF MY KNOWLEDGE

Submitted Electronically

Do NOT Write in This Space - KCC USE ONLY
Date Tested: Results: Date Plugged: Date Repaired: Date Put Back in Service:
Review Completed by: Comments:
TA Approved: Yes Denied Date:

Mail to the Appropriate KCC Conservation Office:

Table with 2 columns: Office Address, Phone. Rows for KCC District Office #1, #2, #3, #4.

General

Well ID 125195
 Well Circle 3410 2-35H
 Company Sandridge
 Operator - * -
 Lease Name Circle 3410 2-35H
 Elevation 1332.00 ft
 Production Method Other
 Dataset Description

Comment

Surface Unit

Manufacturer - * -
 Unit Class Conventional
 Unit API Number - * -
 Measured Stroke Length - * - in
 Rotation CW
 Counter Balance Effect (Weights Level) - * - Klb
 Weight Of Counter Weights 2000 lb

Prime Mover

Motor Type Electric
 Rated HP - * - HP
 Run Time 24 hr/day
 MFG/Comment - * -

Electric Motor Parameters

Rated Full Load AMPS - * -
 Rated Full Load RPM - * -
 Synchronous RPM 1200
 Voltage - * -
 Hertz 60
 Phase 3
 Power Consumption 5
 Power Demand 8 \$/KW

Tubulars

Tubing OD 2.875 in
 Casing OD 7.000 in
 Average Joint Length 30.480 ft
 Anchor Depth - * - ft
 Kelly Bushing 16.00 ft

Pump

Plunger Diameter - * - in
 Pump Intake Depth 5382.00 ft
 **Total Rod Length < Pump Depth

Polished Rod

Polished Rod Diameter - * - in

Rod String

	Top Taper	Taper 2	Taper 3	Taper 4	Taper 5	Taper 6
Rod Type	- * -	- * -	- * -	- * -	- * -	- * -
Rod Length	- * -	- * -	- * -	- * -	- * -	- * - ft
Rod Diameter	- * -	- * -	- * -	- * -	- * -	- * - in
Rod Weight	0.0	0.0	0.0	0.0	0.0	0.0 lb

Total Rod Length 0
 Total Rod Weight 0.00

Damp Up 0.05
 Damp Down 0.05

Conditions

Pressure

Static BHP 695.7 psi (g)
 Static BHP Method Acoustic
 Static BHP Date 12/11/2017

Producing BHP - * - psi (g)
 Producing BHP Method - * -
 Producing BHP Date - * -
 Formation Depth 5496.00 ft

Surface Producing Pressures

Tubing Pressure - * - psi (g)
 Casing Pressure 160.6 psi (g)

Casing Pressure Buildup

Change in Pressure 0.3 psi
 Over Change in Time 0.75 min

Production

Oil Production 0 BBL/D
 Water Production 1 BBL/D
 Gas Production - * - Mscf/D
 Production Date 12/05/2016

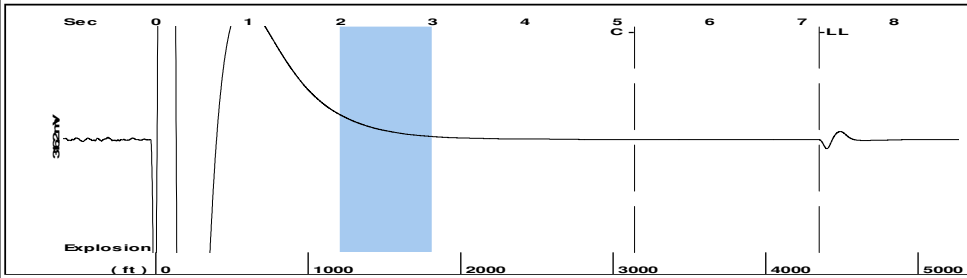
Temperatures

Surface Temperature 70 deg F
 Bottomhole Temperature 150 deg F

Fluid Properties

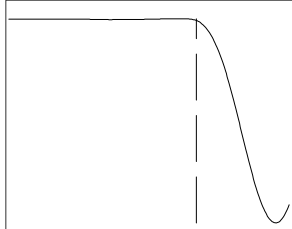
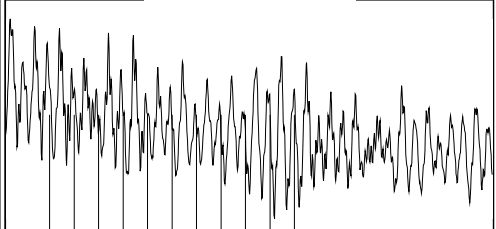
Oil API 40 deg.API
 Water Specific Gravity 1.05 Sp.Gr.H2O

Group: 2017 Sandridge Gp 13 Well: Circle 3410 2-35H (acquired on: 12/11/17 13:53:26)



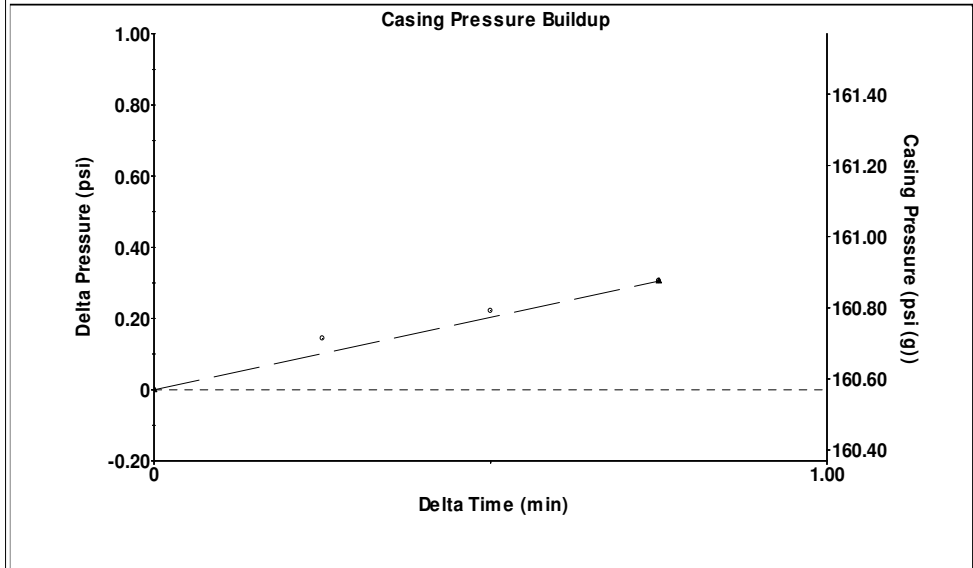
Filter Type High Pass Automatic Collar Count Yes Time 7.187 sec
Manual Acoustic Veloc 1211.93 ft/s Manual JTS/sec 19.8807 Joints 142.725 Jts
Depth 4350.26 ft

[2.0 to 3.0 (Sec)]



Analysis Method: Automatic

Group: 2017 Sandridge Gp 13 Well: Circle 3410 2-35H (acquired on: 12/11/17 13:53:26)



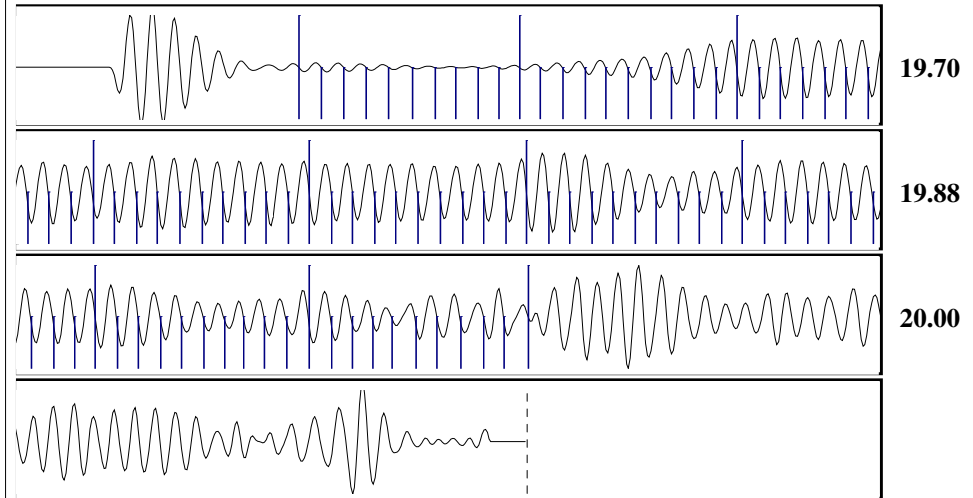
Change in Pressure 0.31 psi PT16722
Change in Time 0.75 min Range 0 - ? psi

Group: 2017 Sandridge Gp 13 Well: Circle 3410 2-35H (acquired on: 12/11/17 13:53:26)

<p>Production Current Potential</p> <p>Oil 0 - * - BBL/D</p> <p>Water 1 - * - BBL/D</p> <p>Gas - * - - * - Mscf/D</p> <p>IPR Method Vogel</p> <p>PBHP/SBHP - * -</p> <p>Production Efficiency 0.0</p> <p>Oil 40 deg.API</p> <p>Water 1.05 Sp.Gr.H2O</p> <p>Gas 0.76 Sp.Gr.AIR</p> <p>Acoustic Velocity 1210.59 ft/s</p>	<p>Casing Pressure 160.6 psi (g)</p> <p>Casing Pressure Buildup 0.306 psi</p> <p>Gas/Liquid Interface Pressure 182.1 psi (g)</p> <p>Liquid Level Depth 4350.26 ft</p> <p>Tubing Intake Depth 5382.00 ft</p> <p>Formation Depth 5496.00 ft</p>	<p>Static</p> <p>Oil Column Height MD 0 ft</p> <p>Water Column Height MD 1130 ft</p> <p>Static BHP 695.7 psi (g)</p>
---	---	--

Circle 3410 2-35H

Group: 2017 Sandridge Gp 13 Well: Circle 3410 2-35H (acquired on: 12/11/17 13:53:26)



Acoustic Velocity 1210.59 ft/s Joints counted 90
Joints Per Second 19.8588 jts/sec Joints to liquid level 142.725
Depth to liquid level 4350.26 ft Filter Width 17.8807 21.8807
Automatic Collar Count Yes Time to 1st Collar 0.656 5.188

December 19, 2017

Laci Bevans
SandRidge Exploration and Production LLC
123 ROBERT S. KERR AVE
OKLAHOMA CITY, OK 73102-6406

Re: Temporary Abandonment
API 15-007-24007-01-00
CIRCLE 3410 2-35H
NW/4 Sec.35-34S-10W
Barber County, Kansas

Dear Laci Bevans:

"Your temporary abandonment (TA) application for the well listed above has been approved. In accordance with K.A.R. 82-3-111 the TA status of this well will expire 12/19/2018.

- * If you return this well to service or plug it, please notify the District Office.
- * If you sell this well you are required to file a Transfer of Operator form, T-1.
- * If the well will remain temporarily abandoned, you must submit a new TA application, CP-111, before 12/19/2018.

You may contact me at the number above if you have questions.

Very truly yours,

Scott Alberg"