

KANSAS CORPORATION COMMISSION
OIL & GAS CONSERVATION DIVISION

TEMPORARY ABANDONMENT WELL APPLICATION

All blanks must be complete

OPERATOR: License# _____
Name: _____
Address 1: _____
Address 2: _____
City: _____ State: _____ Zip: _____ + _____
Contact Person: _____
Phone: (_____) _____
Contact Person Email: _____
Field Contact Person: _____
Field Contact Person Phone: (_____) _____

API No. 15- _____
Spot Description: _____
____ - ____ - ____ - ____ Sec. _____ Twp. _____ S. R. _____ E W
_____ feet from N / S Line of Section
_____ feet from E / W Line of Section
GPS Location: Lat: _____, Long: _____
(e.g. xx.xxxxx) (e.g. -xxx.xxxxx)
Datum: NAD27 NAD83 WGS84
County: _____ Elevation: _____ GL KB
Lease Name: _____ Well #: _____
Well Type: (check one) Oil Gas OG WSW Other: _____
 SWD Permit #: _____ ENHR Permit #: _____
 Gas Storage Permit #: _____
Spud Date: _____ Date Shut-In: _____

	Conductor	Surface	Production	Intermediate	Liner	Tubing
Size						
Setting Depth						
Amount of Cement						
Top of Cement						
Bottom of Cement						

Casing Fluid Level from Surface: _____ How Determined? _____ Date: _____
Casing Squeeze(s): _____ to _____ w / _____ sacks of cement, _____ to _____ w / _____ sacks of cement. Date: _____
(top) (bottom) (top) (bottom)
Do you have a valid Oil & Gas Lease? Yes No
Depth and Type: Junk in Hole at _____ Tools in Hole at _____ Casing Leaks: Yes No Depth of casing leak(s): _____
(depth) (depth)
Type Completion: ALT. I ALT. II Depth of: DV Tool: _____ w / _____ sacks of cement Port Collar: _____ w / _____ sack of cement
(depth) (depth)
Packer Type: _____ Size: _____ Inch Set at: _____ Feet
Total Depth: _____ Plug Back Depth: _____ Plug Back Method: _____

Geological Data:

Formation Name	Formation Top	Formation Base	Completion Information
1. _____	At: _____	to _____ Feet	Perforation Interval _____ to _____ Feet or Open Hole Interval _____ to _____ Feet
2. _____	At: _____	to _____ Feet	Perforation Interval _____ to _____ Feet or Open Hole Interval _____ to _____ Feet

UNDER PENALTY OF PERJURY I HEREBY ATTEST THAT THE INFORMATION CONTAINED HEREIN IS TRUE AND CORRECT TO THE BEST OF MY KNOWLEDGE

Submitted Electronically

Do NOT Write in This Space - KCC USE ONLY	Date Tested: _____	Results: _____	Date Plugged: _____	Date Repaired: _____	Date Put Back in Service: _____
	Review Completed by: _____ Comments: _____				
TA Approved: <input type="checkbox"/> Yes <input type="checkbox"/> Denied Date: _____					

Mail to the Appropriate KCC Conservation Office:

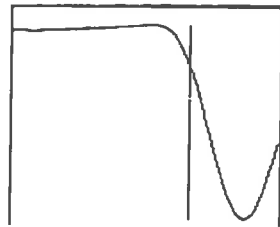
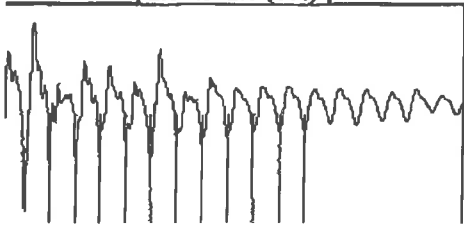
	KCC District Office #1 - 210 E. Frontview, Suite A, Dodge City, KS 67801	Phone 620.682.7933
	KCC District Office #2 - 3450 N. Rock Road, Building 600, Suite 601, Wichita, KS 67226	Phone 316.337.7400
	KCC District Office #3 - 137 E. 21st St., Chanute, KS 66720	Phone 620.902.6450
	KCC District Office #4 - 2301 E. 13th Street, Hays, KS 67601-2651	Phone 785.261.6250

Group: Belpre Well: Britton B 1-15 (acquired on: 12/14/17 12:48:09)



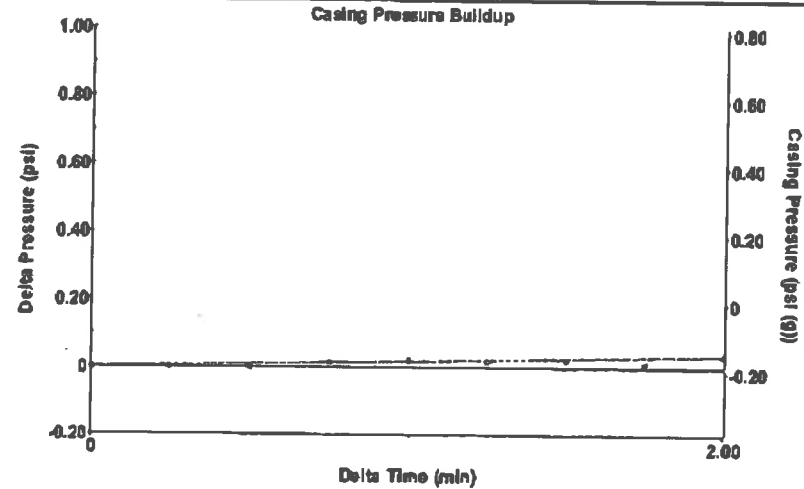
Filter Type High Pass Automatic Collar Count Yes Time 3.662 sec
 Manual Acoustic Velocity 147.29 ft/s Manual JTS/sec 18.0505 Joints 67.017 Jts
 Depth 2129.80 ft

{ 1.0 to 2.0 (Sec) }



Analysis Method: Automatic

Group: Belpre Well: Britton B 1-15 (acquired on: 12/14/17 12:48:09)



Change in Pressure 0.04 psi PT13440
 Change in Time 2.00 min Range 0 - 1 psi

Group: Belpre Well: Britton B 1-15 (acquired on: 12/14/17 12:48:09)

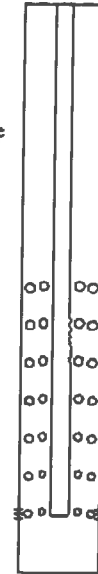
Production
 Current Potential
 Oil 0 -.- BBL/D
 Water 0 -.- BBL/D
 Gas 0.0 -.- Mscf/D

IPR Method Vogel
 FBHP/SBHP -.-
 Production Efficiency 0.0

Oil 0 deg.API
 Water 0 Sp.Gr.H2O
 Gas 0.73 Sp.Gr.AIR

Acoustic Velocity 1163.19 ft/s

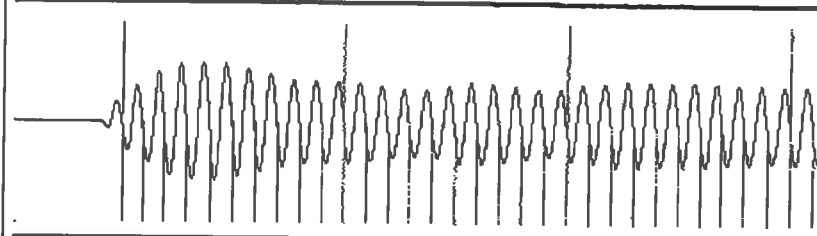
Casing Pressure -0.2 psi (g)
 Casing Pressure Buildup 0.037 psi
 2.00 min
 Gas/Liquid Interface Pressure 0.8 psi (g)
 Liquid Level Depth 2129.80 ft
 Pump Intake Depth 4387.00 ft
 Formation Depth 4367.00 ft



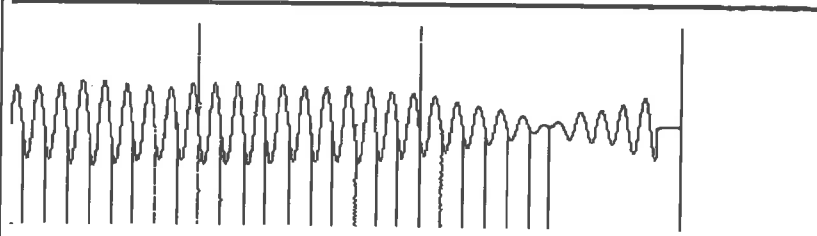
Producing
 Annular Gas Flow 0 Mscf/D
 % Liquid 100 %

Pump Intake 0.8 psi (g)
 Producing BHP 0.8 psi (g)
 Static BHP -14.7 psi (g)

Group: Belpre Well: Britton B 1-15 (acquired on: 12/14/17 12:48:09)



18.19



18.44

Acoustic Velocity 1163.19 ft/s Joints counted 56
 Joints Per Second 18.3007 Jts/sec Joints to liquid level 67.017
 Depth to liquid level 2129.8 ft Filter Width 16.0505 20.0505
 Automatic Collar Count Yes Time to 1st Collar 0.272 3.332

Conservation Division
District Office No. 1
210 E. Frontview, Suite A
Dodge City, KS 67801



Phone: 620-682-7933
<http://kcc.ks.gov/>

Pat Apple, Chairman
Shari Feist Albrecht, Commissioner
Jay Scott Emler, Commissioner

Sam Brownback, Governor

December 26, 2017

Loveness Mpanje
F. G. Holl Company L.L.C.
9431 E CENTRAL STE 100
WICHITA, KS 67206-2563

Re: Temporary Abandonment
API 15-047-20243-00-00
BRITTON B 1
N/2 Sec.15-24S-17W
Edwards County, Kansas

Dear Loveness Mpanje:

"Your temporary abandonment (TA) application for the well listed above has been approved. In accordance with K.A.R. 82-3-111 the TA status of this well will expire 12/26/2018.

- * If you return this well to service or plug it, please notify the District Office.
- * If you sell this well you are required to file a Transfer of Operator form, T-1.
- * If the well will remain temporarily abandoned, you must submit a new TA application, CP-111, before 12/26/2018.

You may contact me at the number above if you have questions.

Very truly yours,

Michael Maier"