

KANSAS CORPORATION COMMISSION  
OIL & GAS CONSERVATION DIVISION

TEMPORARY ABANDONMENT WELL APPLICATION

OPERATOR: License# \_\_\_\_\_  
 Name: \_\_\_\_\_  
 Address 1: \_\_\_\_\_  
 Address 2: \_\_\_\_\_  
 City: \_\_\_\_\_ State: \_\_\_\_\_ Zip: \_\_\_\_\_ + \_\_\_\_\_  
 Contact Person: \_\_\_\_\_  
 Phone: ( \_\_\_\_\_ ) \_\_\_\_\_  
 Contact Person Email: \_\_\_\_\_  
 Field Contact Person: \_\_\_\_\_  
 Field Contact Person Phone: ( \_\_\_\_\_ ) \_\_\_\_\_

API No. 15- \_\_\_\_\_  
 Spot Description: \_\_\_\_\_  
 \_\_\_\_\_ - \_\_\_\_\_ - \_\_\_\_\_ - \_\_\_\_\_ Sec. \_\_\_\_\_ Twp. \_\_\_\_\_ S. R. \_\_\_\_\_  E  W  
 \_\_\_\_\_ feet from  N /  S Line of Section  
 \_\_\_\_\_ feet from  E /  W Line of Section  
 GPS Location: Lat: \_\_\_\_\_, Long: \_\_\_\_\_  
(e.g. xx.xxxxx) (e.g. -xxx.xxxxx)  
 Datum:  NAD27  NAD83  WGS84  
 County: \_\_\_\_\_ Elevation: \_\_\_\_\_  GL  KB  
 Lease Name: \_\_\_\_\_ Well #: \_\_\_\_\_  
 Well Type: (check one)  Oil  Gas  OG  WSW  Other: \_\_\_\_\_  
 SWD Permit #: \_\_\_\_\_  ENHR Permit #: \_\_\_\_\_  
 Gas Storage Permit #: \_\_\_\_\_  
 Spud Date: \_\_\_\_\_ Date Shut-In: \_\_\_\_\_

	Conductor	Surface	Production	Intermediate	Liner	Tubing
Size						
Setting Depth						
Amount of Cement						
Top of Cement						
Bottom of Cement						

Casing Fluid Level from Surface: \_\_\_\_\_ How Determined? \_\_\_\_\_ Date: \_\_\_\_\_  
 Casing Squeeze(s): \_\_\_\_\_ to \_\_\_\_\_ w / \_\_\_\_\_ sacks of cement, \_\_\_\_\_ to \_\_\_\_\_ w / \_\_\_\_\_ sacks of cement. Date: \_\_\_\_\_  
(top) (bottom) (top) (bottom)  
 Do you have a valid Oil & Gas Lease?  Yes  No  
 Depth and Type:  Junk in Hole at \_\_\_\_\_  Tools in Hole at \_\_\_\_\_ Casing Leaks:  Yes  No Depth of casing leak(s): \_\_\_\_\_  
(depth) (depth)  
 Type Completion:  ALT. I  ALT. II Depth of:  DV Tool: \_\_\_\_\_ w / \_\_\_\_\_ sacks of cement  Port Collar: \_\_\_\_\_ w / \_\_\_\_\_ sack of cement  
(depth) (depth)  
 Packer Type: \_\_\_\_\_ Size: \_\_\_\_\_ Inch Set at: \_\_\_\_\_ Feet  
 Total Depth: \_\_\_\_\_ Plug Back Depth: \_\_\_\_\_ Plug Back Method: \_\_\_\_\_

**Geological Data:**

Formation Name	Formation Top	Formation Base	Completion Information
1. _____	At: _____	to _____ Feet	Perforation Interval _____ to _____ Feet or Open Hole Interval _____ to _____ Feet
2. _____	At: _____	to _____ Feet	Perforation Interval _____ to _____ Feet or Open Hole Interval _____ to _____ Feet

UNDER PENALTY OF PERJURY I HEREBY ATTEST THAT THE INFORMATION CONTAINED HEREIN IS TRUE AND CORRECT TO THE BEST OF MY KNOWLEDGE

Submitted Electronically

<b>Do NOT Write in This Space - KCC USE ONLY</b>	Date Tested: _____	Results: _____	Date Plugged: _____	Date Repaired: _____	Date Put Back in Service: _____
	Review Completed by: _____ Comments: _____				
TA Approved: <input type="checkbox"/> Yes <input type="checkbox"/> Denied Date: _____					

Mail to the Appropriate KCC Conservation Office:

	KCC District Office #1 - 210 E. Frontview, Suite A, Dodge City, KS 67801	Phone 620.682.7933
	KCC District Office #2 - 3450 N. Rock Road, Building 600, Suite 601, Wichita, KS 67226	Phone 316.337.7400
	KCC District Office #3 - 137 E. 21st St., Chanute, KS 66720	Phone 620.902.6450
	KCC District Office #4 - 2301 E. 13th Street, Hays, KS 67601-2651	Phone 785.261.6250

### General

Well ID 125451  
 Well JJard 1735 1-4 RE  
 Company Sandridge  
 Operator - \* -  
 Lease Name JJard 1735 1-4 RE  
 Elevation 3200.00 ft  
 Production Method Other  
 Dataset Description

Comment

### Surface Unit

Manufacturer - \* -  
 Unit Class Conventional  
 Unit API Number - \* -  
 Measured Stroke Length 100.000 in  
 Rotation CW  
 Counter Balance Effect (Weights Level) - \* - Klb  
 Weight Of Counter Weights 2000 lb

### Prime Mover

Motor Type Electric  
 Rated HP - \* - HP  
 Run Time 24 hr/day  
 MFG/Comment - \* -

### Electric Motor Parameters

Rated Full Load AMPS - \* -  
 Rated Full Load RPM - \* -  
 Synchronous RPM 1200  
 Voltage - \* -  
 Hertz 60  
 Phase 3  
 Power Consumption 5  
 Power Demand 8 \$/KW

### Tubulars

Tubing OD - \* - in  
 Casing OD 5.500 in  
 Average Joint Length 31.700 ft  
 Anchor Depth - \* - ft  
 Kelly Bushing 12.00 ft

### Pump

Plunger Diameter - \* - in  
 Pump Intake Depth - \* - ft  
 \*\*Total Rod Length > Pump Depth

### Polished Rod

Polished Rod Diameter - \* - in

### Rod String

	Top Taper	Taper 2	Taper 3	Taper 4	Taper 5	Taper 6
Rod Type	- * -	- * -	- * -	- * -	- * -	- * -
Rod Length	- * -	- * -	- * -	- * -	- * -	- * - ft
Rod Diameter	- * -	- * -	- * -	- * -	- * -	- * - in
Rod Weight	0.0	0.0	0.0	0.0	0.0	0.0 lb

Total Rod Length 0  
 Total Rod Weight 0.00

Damp Up 0.05  
 Damp Down 0.05

### Conditions

#### Pressure

Static BHP 736.8 psi (g)  
 Static BHP Method Acoustic  
 Static BHP Date 12/12/2017

Producing BHP - \* - psi (g)  
 Producing BHP Method - \* -  
 Producing BHP Date - \* -  
 Formation Depth 5650.00 ft

#### Surface Producing Pressures

Tubing Pressure - \* - psi (g)  
 Casing Pressure 1.5 psi (g)

#### Casing Pressure Buildup

Change in Pressure 0.911 psi  
 Over Change in Time 0.75 min

#### Production

Oil Production 0 BBL/D  
 Water Production 1 BBL/D  
 Gas Production - \* - Mscf/D  
 Production Date 12/11/2017

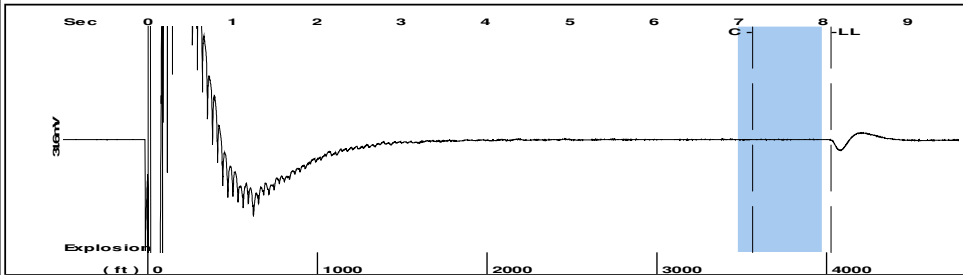
#### Temperatures

Surface Temperature 70 deg F  
 Bottomhole Temperature 150 deg F

#### Fluid Properties

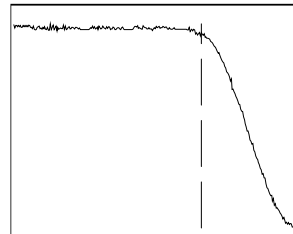
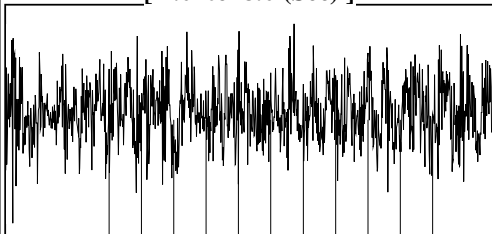
Oil API 40 deg.API  
 Water Specific Gravity 1.05 Sp.Gr.H2O

Group: 2017 Sandridge Gp 13 Well: JJard 1735 1-4 RE (acquired on: 12/12/17 08:48:02)



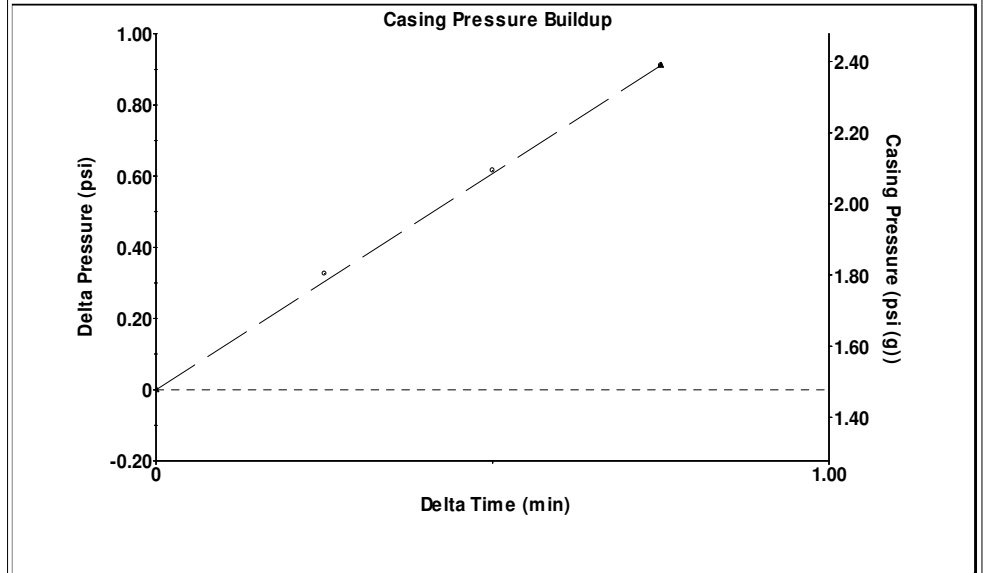
Filter Type High Pass Automatic Collar Count Yes Time 8.095 sec  
Manual Acoustic Veloc 953.383 ft/s Manual JTS/sec 15.0376 Joints 126.999 Jts  
Depth 4025.86 ft

[ 7.0 to 8.0 (Sec) ]



Analysis Method: Automatic

Group: 2017 Sandridge Gp 13 Well: JJard 1735 1-4 RE (acquired on: 12/12/17 08:48:02)

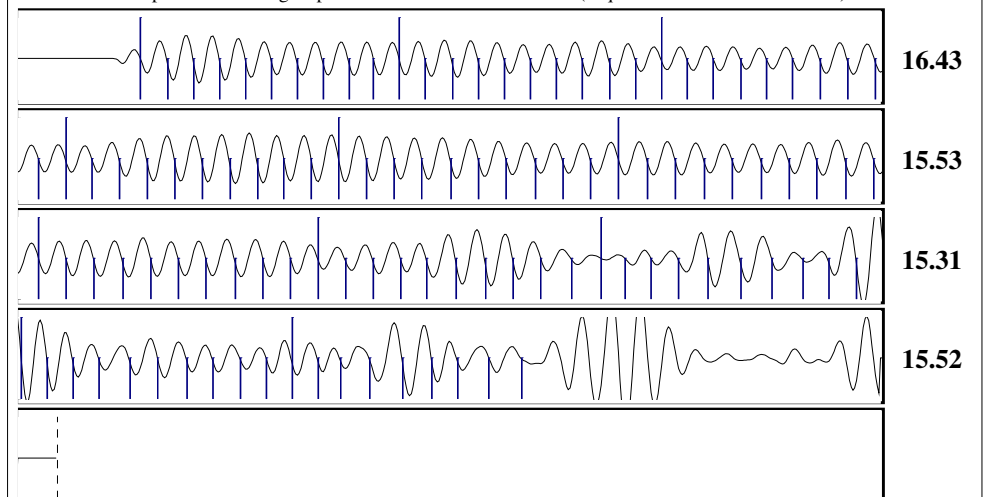


Change in Pressure 0.91 psi PT16722  
Change in Time 0.75 min Range 0 - ? psi

Group: 2017 Sandridge Gp 13 Well: JJard 1735 1-4 RE (acquired on: 12/12/17 08:48:02)

Production		Potential		Casing Pressure		Static	
Oil	0	- * -	BBL/D	1.5	psi (g)		
Water	1	- * -	BBL/D	Casing Pressure Buildup			
Gas	- * -	- * -	Mscf/D	0.911	psi	Oil Column Height	
IPR Method		Vogel		0.75	min	MD	0 ft
PBHP/SBHP		- * -		Gas/Liquid Interface Pressure			
Production Efficiency		0.0		3.8	psi (g)	Water Column Height	
Oil	40	deg.	API	Liquid Level Depth		MD	- * - ft
Water	1.05	Sp.	Gr.H2O	4025.86	ft		
Gas	0.98	Sp.	Gr.AIR	Tubing Intake Depth			
Acoustic Velocity		994.654 ft/s		- * -	ft		
				Formation Depth			
				5650.00	ft		
				Static BHP			
				736.8	psi (g)		
JJard 1735 1-4 RE							

Group: 2017 Sandridge Gp 13 Well: JJard 1735 1-4 RE (acquired on: 12/12/17 08:48:02)



Acoustic Velocity 994.654 ft/s Joints counted 108  
Joints Per Second 15.6886 jts/sec Joints to liquid level 126.999  
Depth to liquid level 4025.86 ft Filter Width 13.0376 17.0376  
Automatic Collar Count Yes Time to 1st Collar 0.284 7.168

December 26, 2017

Laci Bevans  
SandRidge Exploration and Production LLC  
123 ROBERT S. KERR AVE  
OKLAHOMA CITY, OK 73102-6406

Re: Temporary Abandonment  
API 15-203-20059-00-01  
JJARD 1735 1-4 RE  
SE/4 Sec.04-17S-35W  
Wichita County, Kansas

Dear Laci Bevans:

"Your temporary abandonment (TA) application for the well listed above has been approved. In accordance with K.A.R. 82-3-111 the TA status of this well will expire 12/26/2018.

- \* If you return this well to service or plug it, please notify the District Office.
- \* If you sell this well you are required to file a Transfer of Operator form, T-1.
- \* If the well will remain temporarily abandoned, you must submit a new TA application, CP-111, before 12/26/2018.

You may contact me at the number above if you have questions.

Very truly yours,

Michael Maier"