

KANSAS CORPORATION COMMISSION
OIL & GAS CONSERVATION DIVISION

Form must be Typed
Form must be signed

TEMPORARY ABANDONMENT WELL APPLICATION

All blanks must be complete

OPERATOR: License#
Name:
Address 1:
Address 2:
City: State: Zip:
Contact Person:
Phone:
Contact Person Email:
Field Contact Person:
Field Contact Person Phone:

API No. 15-
Spot Description:
Sec. Twp. S. R.
GPS Location: Lat: Long:
Datum: NAD27 NAD83 WGS84
County: Elevation:
Lease Name: Well #:
Well Type: Oil Gas OG WSW Other:
SWD Permit #: ENHR Permit #:
Gas Storage Permit #:
Spud Date: Date Shut-In:

Table with 7 columns: Conductor, Surface, Production, Intermediate, Liner, Tubing. Rows include Size, Setting Depth, Amount of Cement, Top of Cement, Bottom of Cement.

Casing Fluid Level from Surface: How Determined? Date:
Casing Squeeze(s): to w / sacks of cement, to w / sacks of cement. Date:
Do you have a valid Oil & Gas Lease? Yes No
Depth and Type: Junk in Hole at Tools in Hole at Casing Leaks: Yes No Depth of casing leak(s):
Type Completion: ALT. I ALT. II Depth of: DV Tool: w / sacks of cement Port Collar: w / sack of cement
Packer Type: Size: Inch Set at: Feet
Total Depth: Plug Back Depth: Plug Back Method:

Geological Data:

Table with 4 columns: Formation Name, Formation Top, Formation Base, Completion Information. Rows 1 and 2.

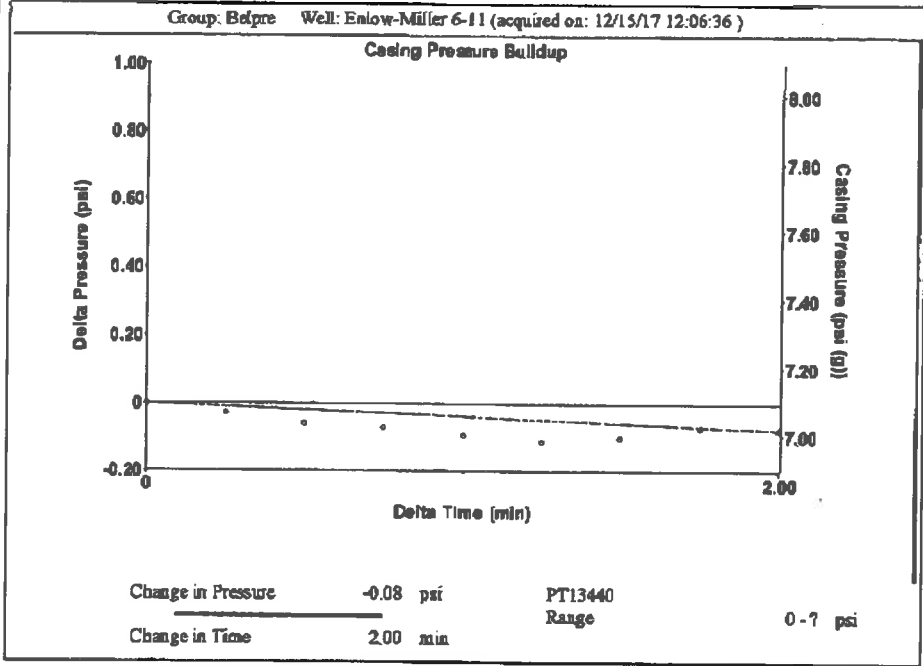
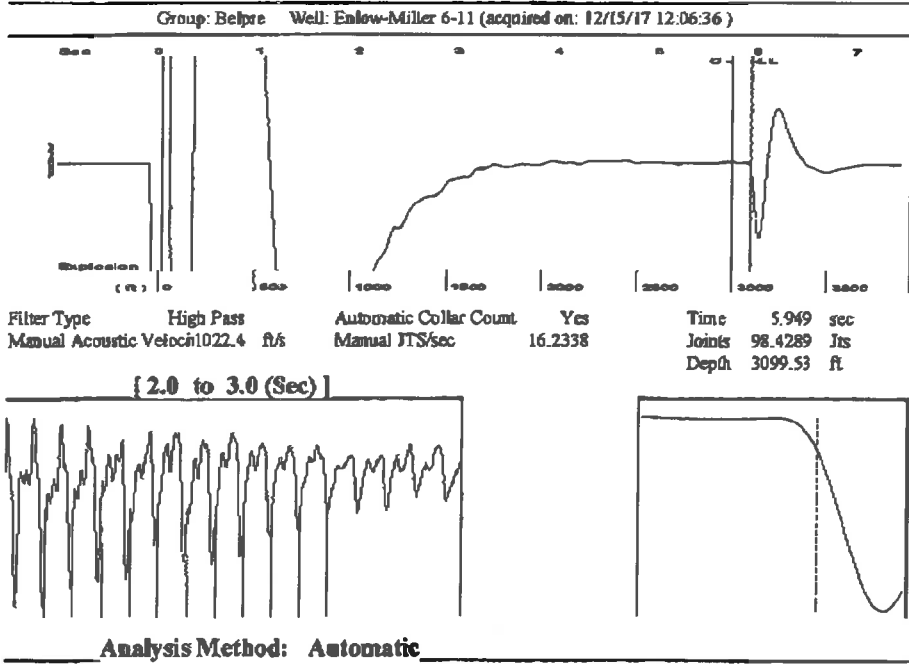
UNDER PENALTY OF PERJURY I HEREBY ATTEST THAT THE INFORMATION CONTAINED HEREIN IS TRUE AND CORRECT TO THE BEST OF MY KNOWLEDGE

Submitted Electronically

Do NOT Write in This Space - KCC USE ONLY
Date Tested: Results: Date Plugged: Date Repaired: Date Put Back in Service:
Review Completed by: Comments:
TA Approved: Yes Denied Date:

Mail to the Appropriate KCC Conservation Office:

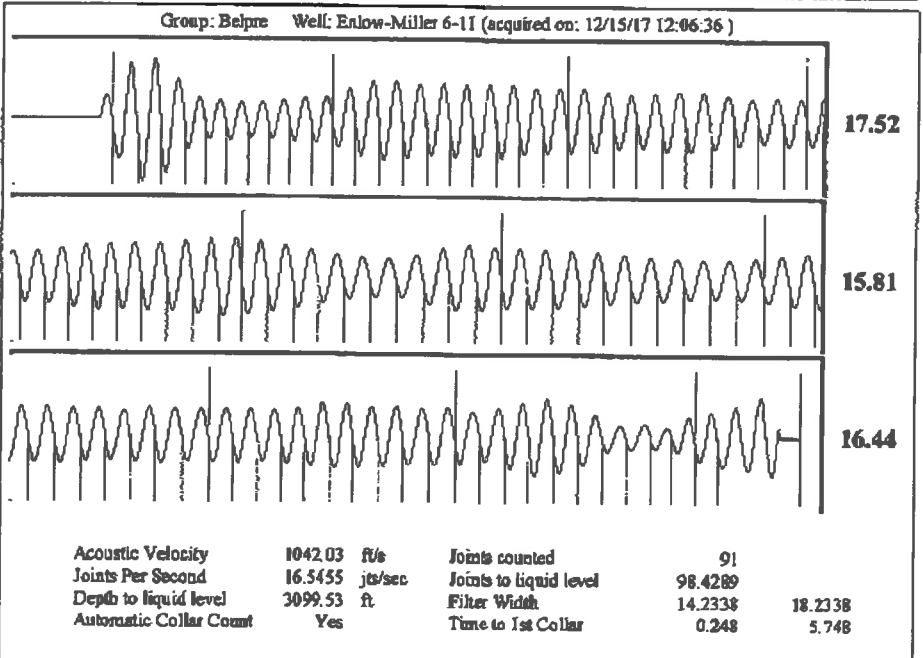
Table with 2 columns: Office Address, Phone. Rows for District Office #1, #2, #3, #4.



Group: Belpre Well: Enlow-Miller 6-11 (acquired on: 12/15/17 12:06:36)

Production Current	Potential	Casing Pressure	Producing
Oil -.-	-.- EBL/D	7.1 psi (g)	Annular Gas Flow
Water -.-	-.- EBL/D	Casing Pressure Buildup -0.076 psi	0 Mscf/D
Gas -.-	-.- Mscf/D	2.00 min	% Liquid 100 %
IPR Method	Vogel	Gas/Liquid Interface Pressure 9.4 psi (g)	
PBHP/SBHP	-.-	Liquid Level Depth 3099.53 ft	
Production Efficiency 0.0		Pump Intake Depth 4378.00 ft	
Oil 40 deg API		Formation Depth 4344.00 ft	
Water 1.05 Sp.Gr.H2O			
Gas 0.94 Sp.Gr.AIR			
Acoustic Velocity 1042.03 ft/s			
Formation Submergence			
Total Gaseous Liquid Column HT (TVD) 1278 ft			
Equivalent Gas Free Liquid HT (TVD) 1278 ft			
Acoustic Test			

Pump Intake 440.5 psi (g)
Producing BHP 429.4 psi (g)
Static BHP -.- psi (g)



December 26, 2017

Loveness Mpanje
F. G. Holl Company L.L.C.
9431 E CENTRAL STE 100
WICHITA, KS 67206-2563

Re: Temporary Abandonment
API 15-047-21251-00-00
ENLOW-MILLER 6-11
SE/4 Sec.11-24S-17W
Edwards County, Kansas

Dear Loveness Mpanje:

"Your temporary abandonment (TA) application for the well listed above has been approved. In accordance with K.A.R. 82-3-111 the TA status of this well will expire 12/26/2018.

- * If you return this well to service or plug it, please notify the District Office.
- * If you sell this well you are required to file a Transfer of Operator form, T-1.
- * If the well will remain temporarily abandoned, you must submit a new TA application, CP-111, before 12/26/2018.

You may contact me at the number above if you have questions.

Very truly yours,

Michael Maier"