

LITHOLOGY STRIP LOG

WellSight Systems

Scale 1:240 (5"=100') Imperial
Measured Depth Log

Well Name: SPRATT 1-19

API: 15-055-22464

Location: S2 S2 NW4 NE4 Sec.19 T25S-R33W, FINNEY CO., KANSAS

License Number:

Region: SW Kansas

Spud Date: 10/05/2017

Drilling Completed: 10/13/2017

Surface Coordinates:

Bottom Hole

Coordinates:

Ground Elevation (ft): 2,931'

K.B. Elevation (ft): 2,942'

Logged Interval (ft): 4,000

To: 5,423'

Total Depth (ft): 5,423'

Formation:

Type of Drilling Fluid:

Printed by StripLog from WellSight Systems 1-800-447-1534 www.WellSight.com

OPERATOR

Company: SPESS OIL COMPANY

Address: 120 S. Broadway
Cleveland, OK 74020

GEOLOGIST

Name: DWIGHT BREHM

Company: BREHM ASSET MANAGEMENT, LLC

Address: 11625 Custer Road, Suite 110-353
Frisco, TX 75035

SHOWS

FT. SCOTT 4,575'-4,585' & 4,628'-4,636'
MORROW 4,920'-4,930'

SAMPLES

SAMPLES TAKEN AT 10 FT. INTERVALS

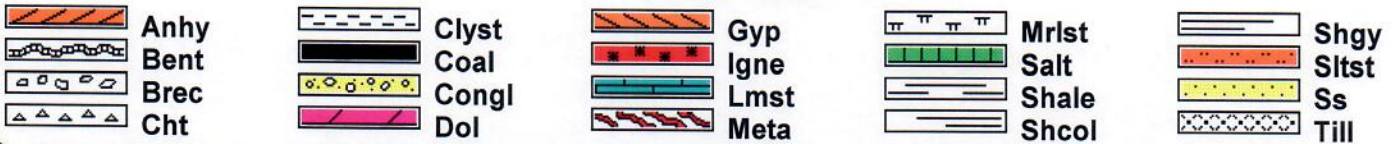
4,000'-5,423'

EXAMINED UNDER MICROSCOPE & BLACK LIGHT

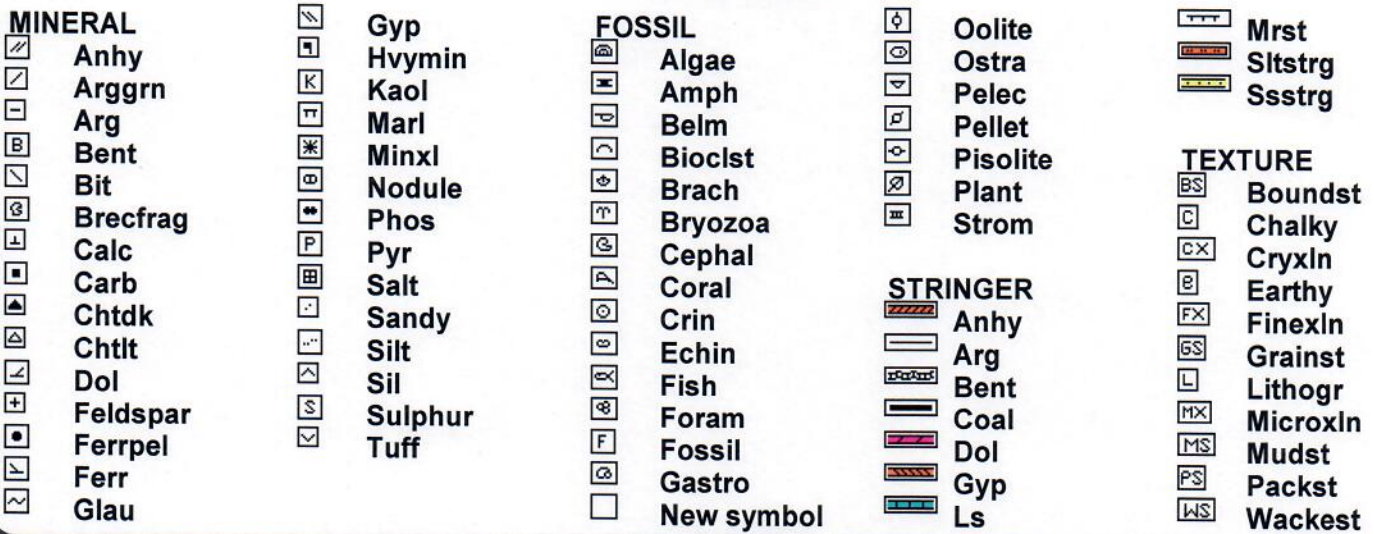
Comments

DRILLING TIME NOT PLOTTED PDC BIT TIME NOT RELIABLE
TRI-CONE BIT START 4,990' DRILLED STRAIGHT LINE 5 MIN/FT

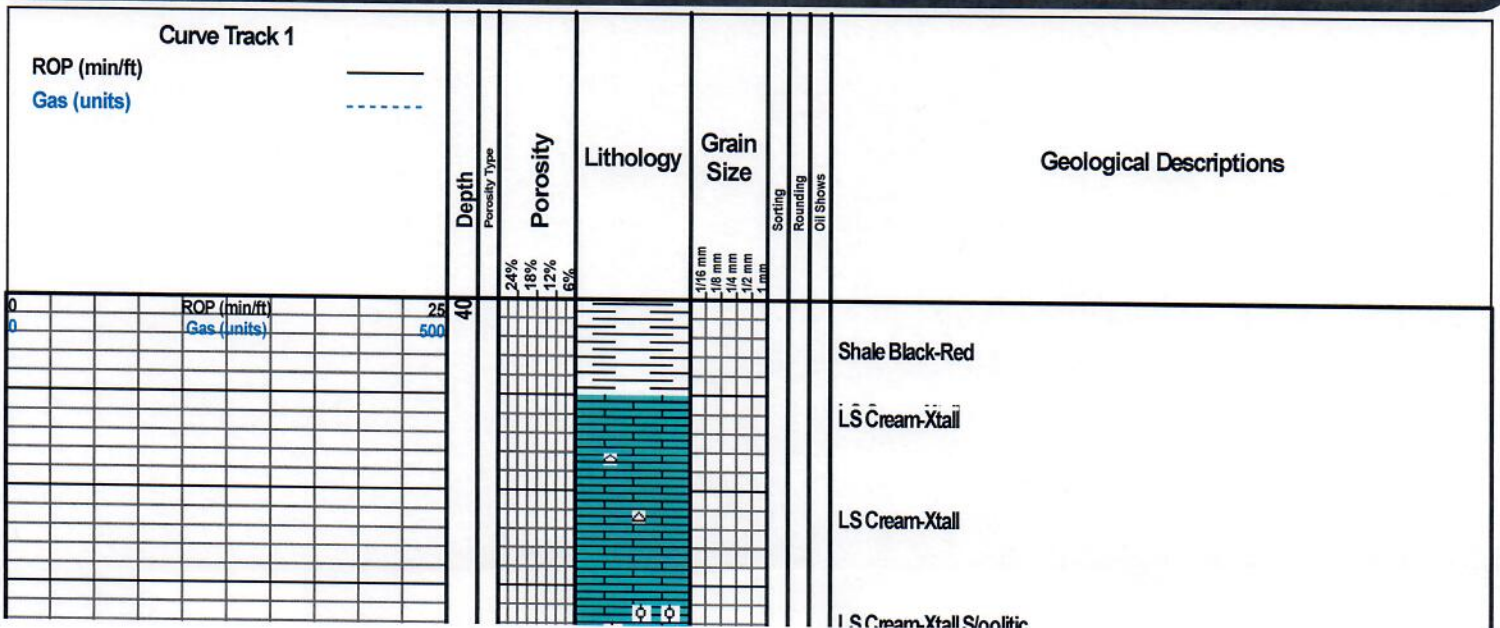
ROCK TYPES

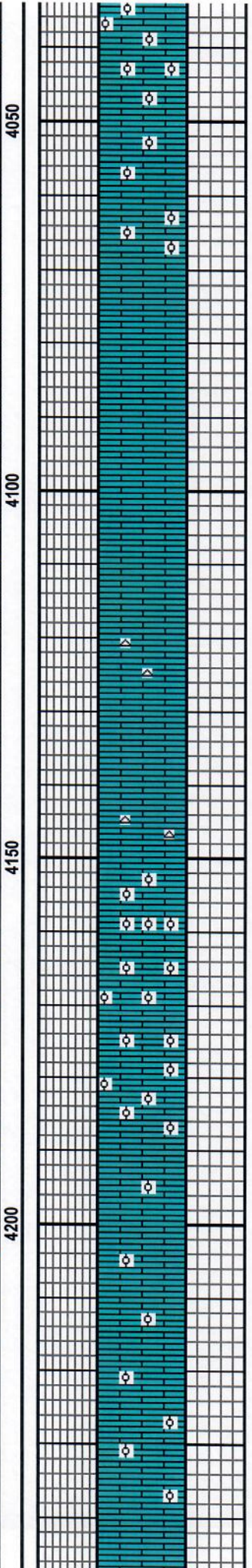
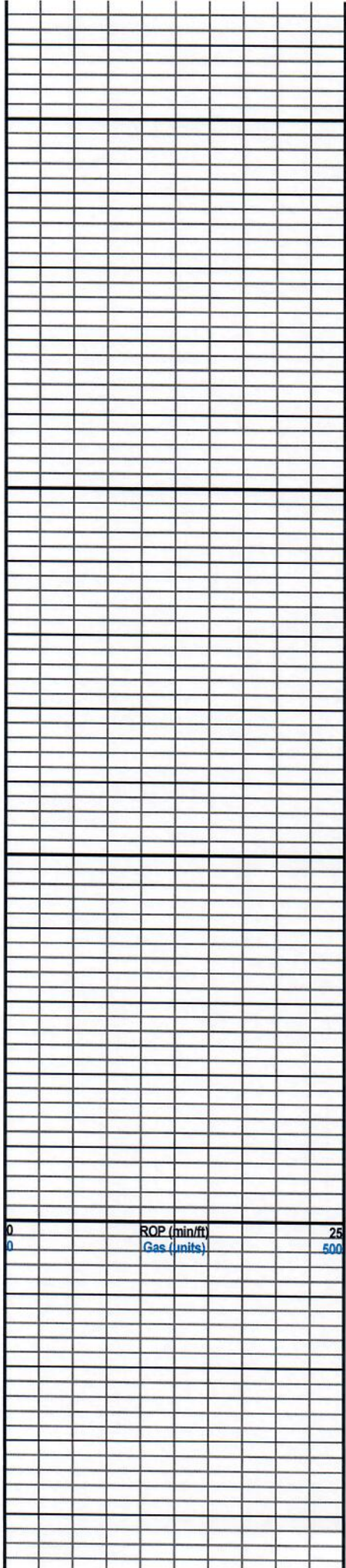


ACCESSORIES



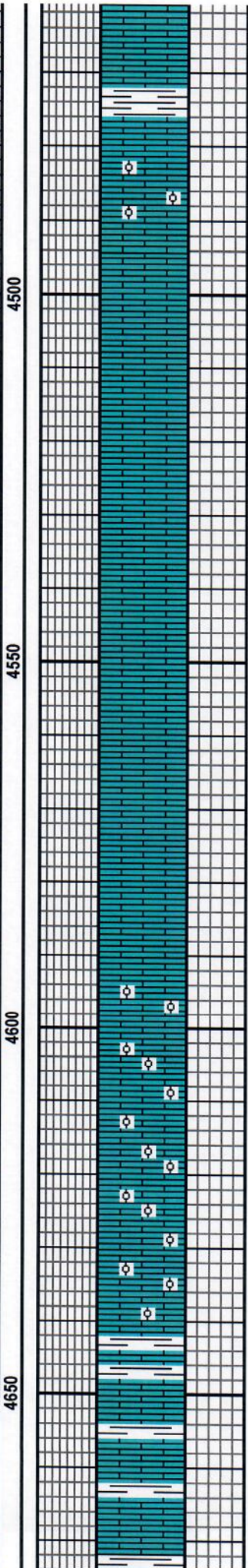
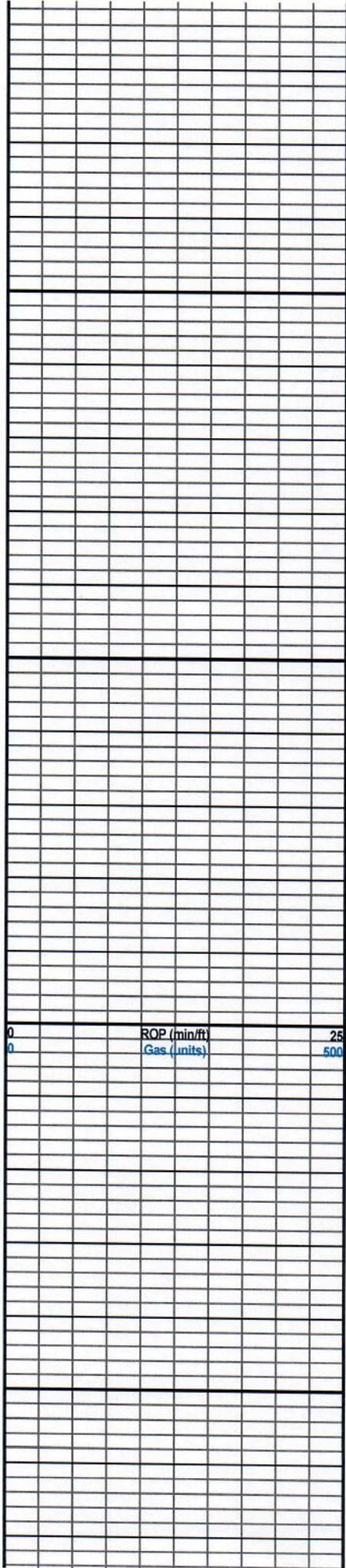
OTHER SYMBOLS



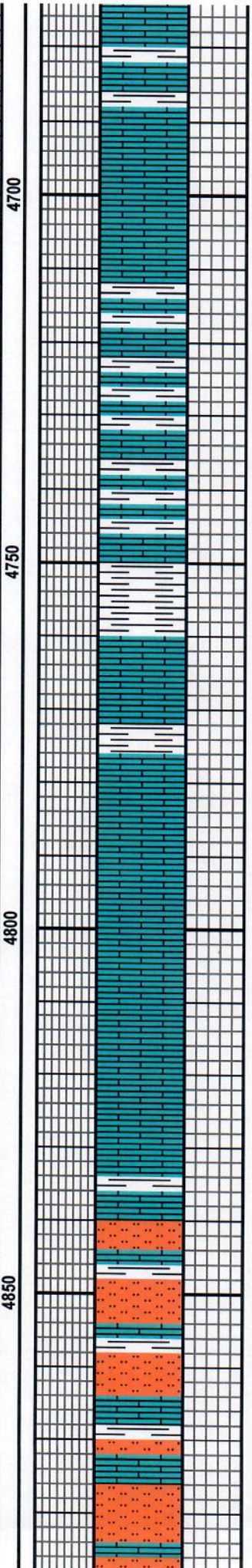
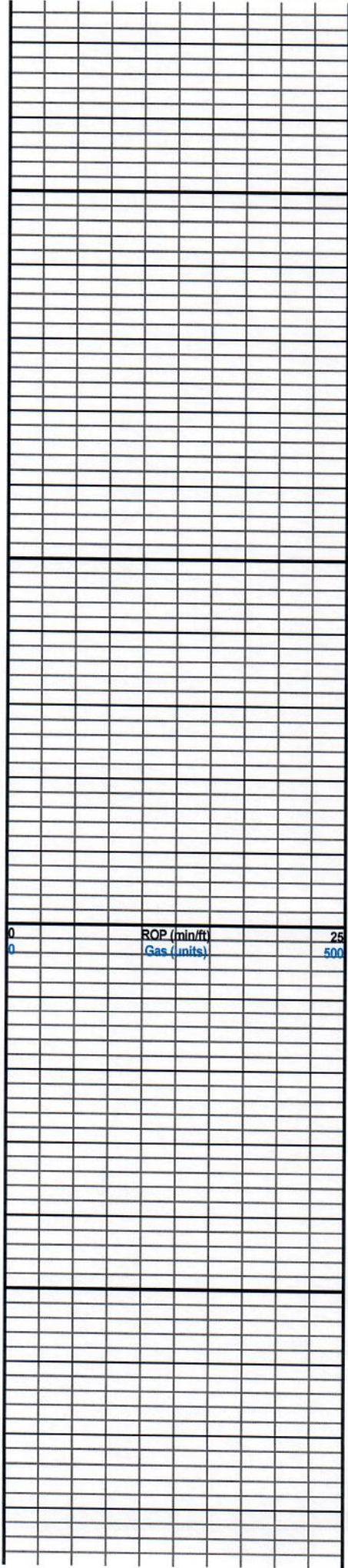


- LS Cream Oolitic
- LS Cream-Tan Oolitic
- LS Cream-Tan Oolitic
- LS Cream Xtall
- LS Cream-Gray Xtall
- LS Cream-Tan Xtall
- LS Foss Oolitic some staining
- LS Foss Oolitic some staining
- LS Cream-Tan OCC Chert
- LS Cream-Tan Xtall
- LS Cream Xtall
- LS Brown Oolitic
- LS Brown Oolitic
- LS Brown Oolitic
- LS Cream-Gray Chalky
- LS Tan-Brown Oolitic
- LS Tan-Brown S/oolitic
- LS Tan-Brown S/oolitic
- LS Tan-Brown S/oolitic
- LS Tan-Brown S/oolitic
- LS Tan-Gray Dns Xtall

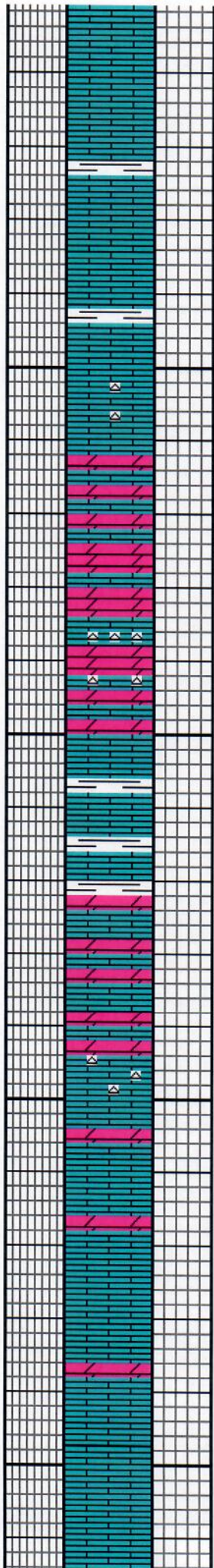
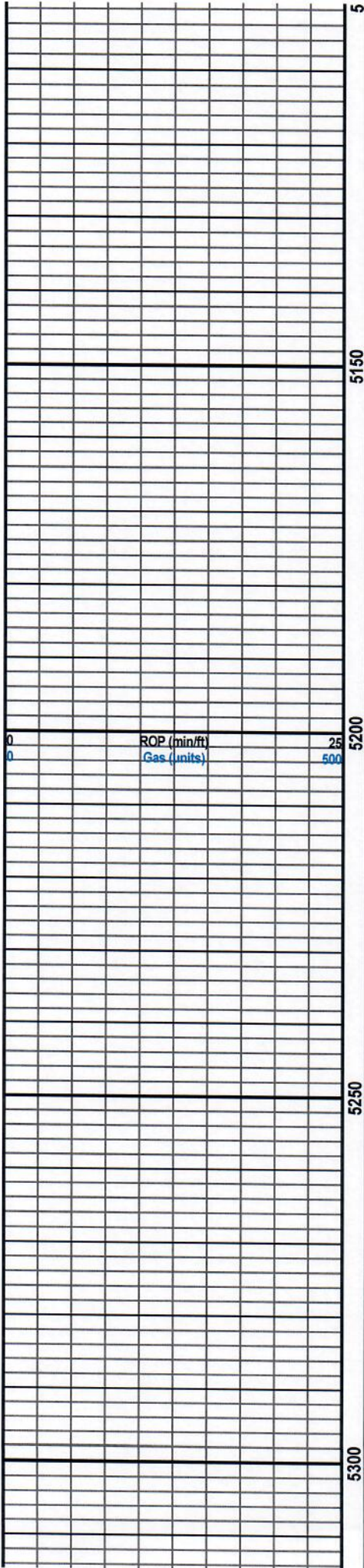
ROP (min/ft) 25
 Gas (units) 500



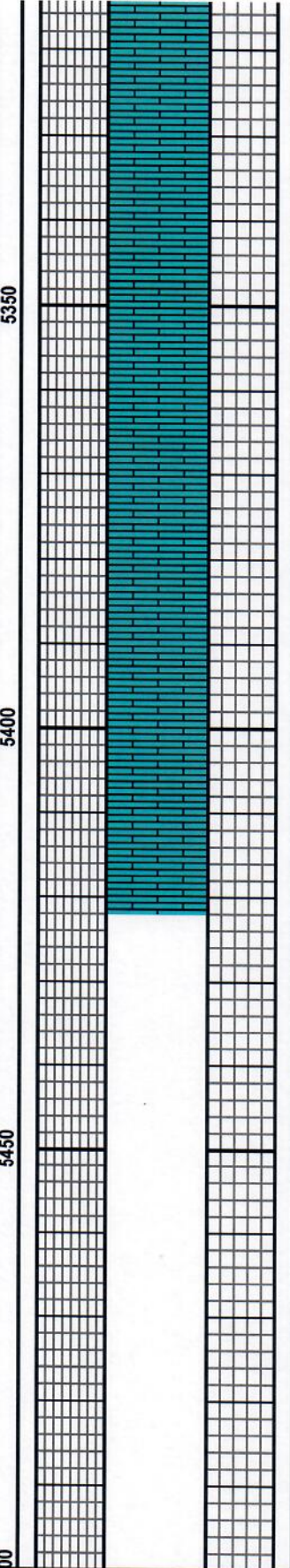
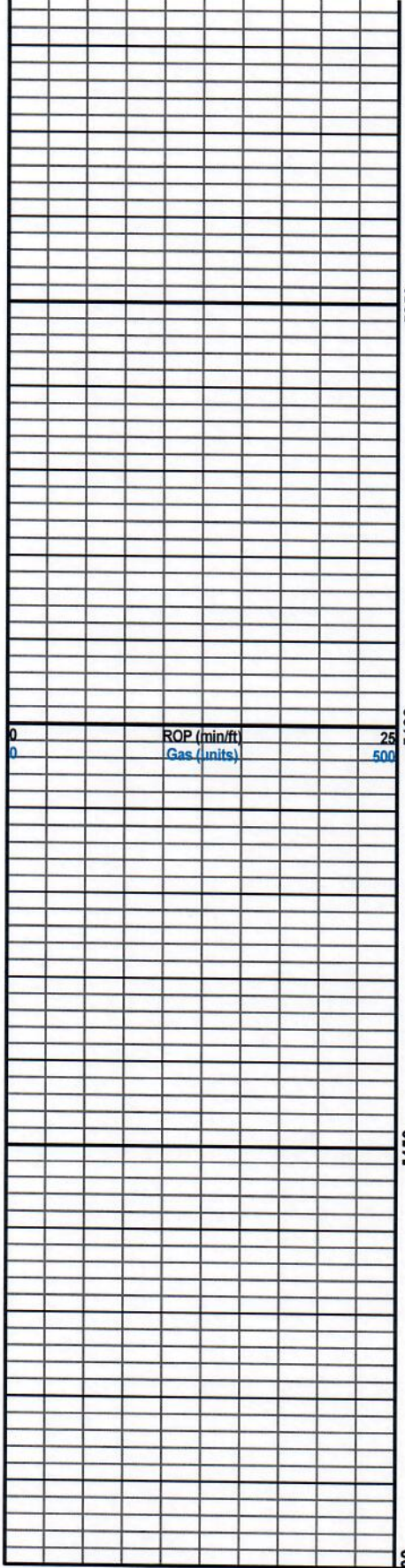
- LS Tan-Brown Dns Xtall
- LS Tan-Brown Dns Xtall Shaley
- LS Brown Oolitic
- MARMATON SAMPLES 4,496'**
- LS Cream-Tan Xtall, OCC Chert
- LS Cream-Tan Xtall, OCC Chert
- LS Tan Xtall
- LS Tan-Brown Xtall
- LS Tan-Brown Xtall
- LS Tan-Brown Xtall
- LS Tan-Brown Xtall
- LS Tan-Brown Xtall
- LS Tan-Brown Xtall
- LS Brown Oolitic Stained SFO
- FT. Scott Samples 4,595'**
- LS Brown Oolitic Stained SFO
- LS Tan Oolitic
- LS Tan Oolitic
- LS Tan Oolitic Stained SFO
- LS & Shale
- LS Tan Dns Xtall
- Shale Red & Black
- LS Tan Dns Xtall
- Shale Red & Black



- Shale Red & Black
- LS Tan Dns Xtall
- Shale Red & Black
- LS Tan Dns Xtall
- LS Tan-Gray Dns
- Vericolored Shale
- LS Tan-Gray
- LS Tan-Gray
- Vericolored Shale
- Vericolored Shale
- LS Tan-Gray
- Vericolored Shale
- LS Tan-Gray
- Vericolored Shale
- LS Tan Dns Xtall
- Vericolored Shale
- LS Tan Dns Xtall
- LS Tan-Gray Dns Xtall
- LS Tan-Gray Dns
- LS Tan-Gray Dns
- LS Tan-Gray Dns
- LS Tan-Gray Dns Xtall
- Red & Black Shale
- LS Tan-Gray Dns
- Siltstone & Shale
- LS Gray Dns
- Siltstone & Shale
- LS Gray Dns
- Siltstone & Shale
- LS Gray Dns
- Siltstone & Shale



- Sandy LS-White
- Sandy LS-White
- Sandy LS-White
- Shale Black
- LS Cream Foss
- LS Cream Foss
- Shale Black-Green
- LS Cream-Gray Dns Xtall
- Some Foss OCC Chert
- LS Tan-Gray Xtall Dolo
- LS Tan-Gray Xtall Dolo
- LS Tan-Gray Xtall Dolo
- Chert
- LS Tan-Gray Xtall Dolo
- LS Tan-Gray Dolo
- Shale Black
- LS Tan-Gray
- Shale Black
- LS Tan-Gray Xtall Dolo
- LS Tan-Gray Dolo
- LS Tan-Gray Dolo
- Chert
- LS Tan-Brown Xtall
- Dolo
- LS Tan-Brown Xtall
- Dolo
- LS Tan-Brown Xtall
- LS Tan-Brown Xtall
- Dolo
- LS Tan-Brown Xtall
- LS Tan-Brown Xtall



LS Tan-Brown Xtall
LS Tan-Brown Xtall
LS Tan-Brown Xtall
LS Tan-Brown Xtall
LS Tan-Brown Xtall
LS Tan-Brown Xtall
LS Tan-Brown Xtall
LS Tan-Brown Xtall
LS Tan-Brown Xtall
LS Tan-Brown Xtall
LS Tan-Brown Xtall
LS Tan-Brown Xtall

TOTAL DEPTH 5,423'