



## DRILL STEM TEST REPORT

Prepared For: **Downing Nelson Oil Co., Inc**

PO Box 1019  
Hays, KS 67601

ATTN: Marc Downing

### **Cook-Priddy #1-35**

### **35-11S-23W Trego,KS**

Start Date: 2017.10.22 @ 13:03:44

End Date: 2017.10.22 @ 20:57:35

Job Ticket #: 63101                      DST #: 1

Trilobite Testing, Inc

PO Box 362 Hays, KS 67601

ph: 785-625-4778 fax: 785-625-5620

Printed: 2017.10.30 @ 13:24:47

Downing Nelson Oil Co., Inc  
35-11S-23W Trego,KS  
Cook-Priddy #1-35  
DST # 1  
Toronto & LKC "A"  
2017.10.22



**TRILOBITE TESTING, INC.**

# DRILL STEM TEST REPORT

Downing Nelson Oil Co., Inc

**35-11S-23W Trego, KS**

PO Box 1019  
Hays, KS 67601

**Cook-Priddy #1-35**

Job Ticket: 63101

**DST#: 1**

ATTN: Marc Downing

Test Start: 2017.10.22 @ 13:03:44

## GENERAL INFORMATION:

Formation: **Toronto & LKC "A"**

Deviated: No Whipstock: ft (KB)

Time Tool Opened: 17:10:50

Time Test Ended: 20:57:35

Test Type: Conventional Bottom Hole (Initial)

Tester: Brannan Lonsdale

Unit No: 73

Interval: **3580.00 ft (KB) To 3645.00 ft (KB) (TVD)**

Reference Elevations: 2367.00 ft (KB)

Total Depth: 3645.00 ft (KB) (TVD)

2359.00 ft (CF)

Hole Diameter: 7.88 inches Hole Condition: Poor

KB to GR/CF: 8.00 ft

**Serial #: 8524 Outside**

Press@RunDepth: 62.23 psig @ 3581.00 ft (KB)

Capacity: 8000.00 psig

Start Date: 2017.10.22 End Date: 2017.10.22

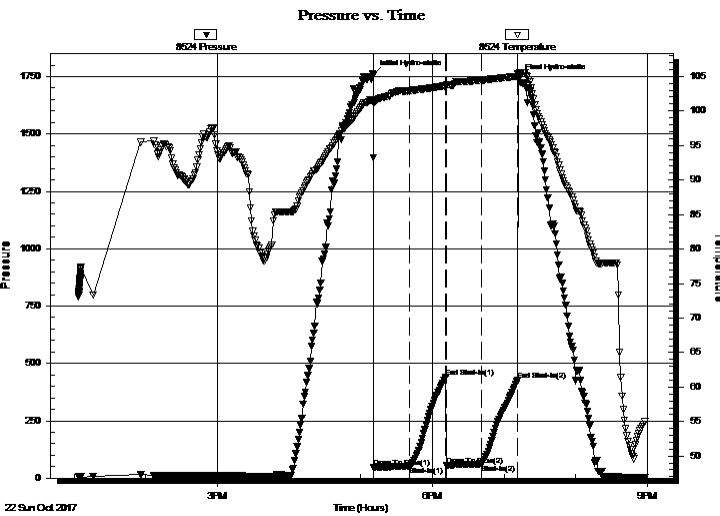
Last Calib.: 2017.10.22

Start Time: 13:03:45 End Time: 20:57:35

Time On Btm: 2017.10.22 @ 17:10:20

Time Off Btm: 2017.10.22 @ 19:12:05

**TEST COMMENT:** 30- IF- Surface blow died in 5 mins  
30- IS- No blow  
30- FF- Surface blow died in 4 mins Flushed tool Surface blow died in 1 min  
30- FS- No blow



## PRESSURE SUMMARY

Time (Min.)	Pressure (psig)	Temp (deg F)	Annotation
0	1756.70	101.52	Initial Hydro-static
1	47.00	101.16	Open To Flow (1)
31	52.67	102.92	Shut-In(1)
61	438.98	103.65	End Shut-In(1)
62	56.18	103.72	Open To Flow (2)
91	62.23	104.45	Shut-In(2)
121	426.00	105.03	End Shut-In(2)
122	1739.43	105.44	Final Hydro-static

## Recovery

Length (ft)	Description	Volume (bbl)
75.00	OCM, 25%O 75%M	0.77

## Gas Rates

	Choke (inches)	Pressure (psig)	Gas Rate (Mcf/d)



**TRILOBITE**  
**TESTING, INC.**

## DRILL STEM TEST REPORT

Downing Nelson Oil Co., Inc

PO Box 1019  
Hays, KS 67601

ATTN: Marc Downing

**35-11S-23W Trego, KS**

**Cook-Priddy #1-35**

Job Ticket: 63101

**DST#: 1**

Test Start: 2017.10.22 @ 13:03:44

### GENERAL INFORMATION:

Formation: **Toronto & LKC "A"**

Deviated: No Whipstock: ft (KB)

Time Tool Opened: 17:10:50

Time Test Ended: 20:57:35

Test Type: Conventional Bottom Hole (Initial)

Tester: Brannan Lonsdale

Unit No: 73

Interval: **3580.00 ft (KB) To 3645.00 ft (KB) (TVD)**

Total Depth: 3645.00 ft (KB) (TVD)

Hole Diameter: 7.88 inches Hole Condition: Poor

Reference Elevations: 2367.00 ft (KB)

2359.00 ft (CF)

KB to GR/CF: 8.00 ft

**Serial #: 6771** Inside

Press@RunDepth: psig @ 3581.00 ft (KB)

Capacity: 8000.00 psig

Start Date: 2017.10.22 End Date: 2017.10.22

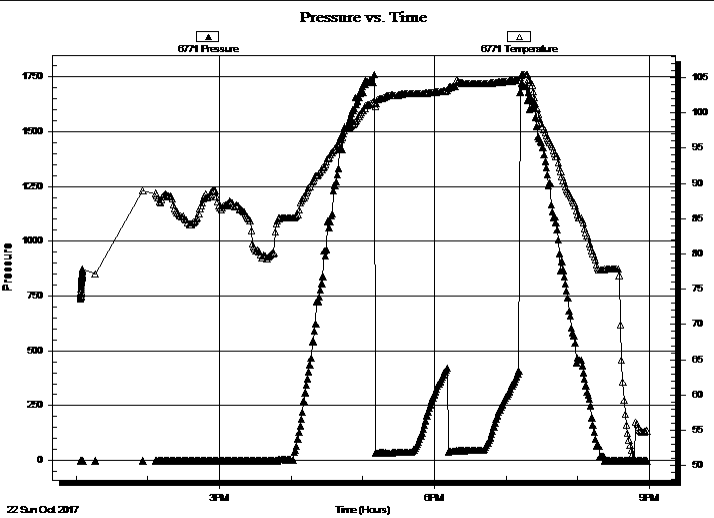
Last Calib.: 2017.10.22

Start Time: 13:03:46 End Time: 20:57:36

Time On Btm:

Time Off Btm:

TEST COMMENT: 30- IF- Surface blow died in 5 mins  
30- IS- No blow  
30- FF- Surface blow died in 4 mins Flushed tool Surface blow died in 1 min  
30- FS- No blow



### PRESSURE SUMMARY

Time (Min.)	Pressure (psig)	Temp (deg F)	Annotation

### Recovery

Length (ft)	Description	Volume (bbl)
75.00	OCM, 25%O 75%M	0.77

### Gas Rates

	Choke (inches)	Pressure (psig)	Gas Rate (Mcf/d)



**TRILOBITE  
TESTING, INC.**

# DRILL STEM TEST REPORT

**TOOL DIAGRAM**

Downing Nelson Oil Co., Inc

**35-11S-23W Trego,KS**

PO Box 1019  
Hays, KS 67601

**Cook-Priddy #1-35**

Job Ticket: 63101

**DST#: 1**

ATTN: Marc Downing

Test Start: 2017.10.22 @ 13:03:44

## Tool Information

Drill Pipe:	Length: 3551.00 ft	Diameter: 3.82 inches	Volume: 50.34 bbl	Tool Weight: 2000.00 lb
Heavy Wt. Pipe:	Length: ft	Diameter: inches	Volume: - bbl	Weight set on Packer: 25000.00 lb
Drill Collar:	Length: 32.00 ft	Diameter: 2.25 inches	Volume: 0.16 bbl	Weight to Pull Loose: 68000.00 lb
			<u>Total Volume: - bbl</u>	Tool Chased 5.00 ft
Drill Pipe Above KB:	23.00 ft			String Weight: Initial 53000.00 lb
Depth to Top Packer:	3580.00 ft			Final 53000.00 lb
Depth to Bottom Packer:	ft			
Interval between Packers:	65.00 ft			
Tool Length:	85.00 ft			
Number of Packers:	2	Diameter: 6.75 inches		

Tool Comments:

## Tool Description

Tool Description	Length (ft)	Serial No.	Position	Depth (ft)	Accum. Lengths
Change Over Sub	1.00			3561.00	
Shut In Tool	5.00			3566.00	
Hydraulic tool	5.00			3571.00	
Packer	5.00			3576.00	20.00 Bottom Of Top Packer
Packer	4.00			3580.00	
Stubb	1.00			3581.00	
Recorder	0.00	6771	Inside	3581.00	
Recorder	0.00	8524	Outside	3581.00	
Perforations	27.00			3608.00	
Change Over Sub	1.00			3609.00	
Drill Pipe	32.00			3641.00	
Change Over Sub	1.00			3642.00	
Bullnose	3.00			3645.00	65.00 Bottom Packers & Anchor

**Total Tool Length: 85.00**



**TRILOBITE  
TESTING, INC.**

**DRILL STEM TEST REPORT**

**FLUID SUMMARY**

Downing Nelson Oil Co., Inc

**35-11S-23W Trego,KS**

PO Box 1019  
Hays, KS 67601

**Cook-Priddy #1-35**

Job Ticket: 63101

**DST#: 1**

ATTN: Marc Downing

Test Start: 2017.10.22 @ 13:03:44

**Mud and Cushion Information**

Mud Type: Gel Chem

Cushion Type:

Oil API:

34 deg API

Mud Weight: 9.00 lb/gal

Cushion Length:

ft

Water Salinity:

ppm

Viscosity: 58.00 sec/qt

Cushion Volume:

bbbl

Water Loss: 7.38 in<sup>3</sup>

Gas Cushion Type:

Resistivity: ohm.m

Gas Cushion Pressure:

psig

Salinity: 2000.00 ppm

Filter Cake: inches

**Recovery Information**

Recovery Table

Length ft	Description	Volume bbbl
75.00	OCM, 25%O 75%M	0.767

Total Length: 75.00 ft      Total Volume: 0.767 bbl

Num Fluid Samples: 0

Num Gas Bombs: 0

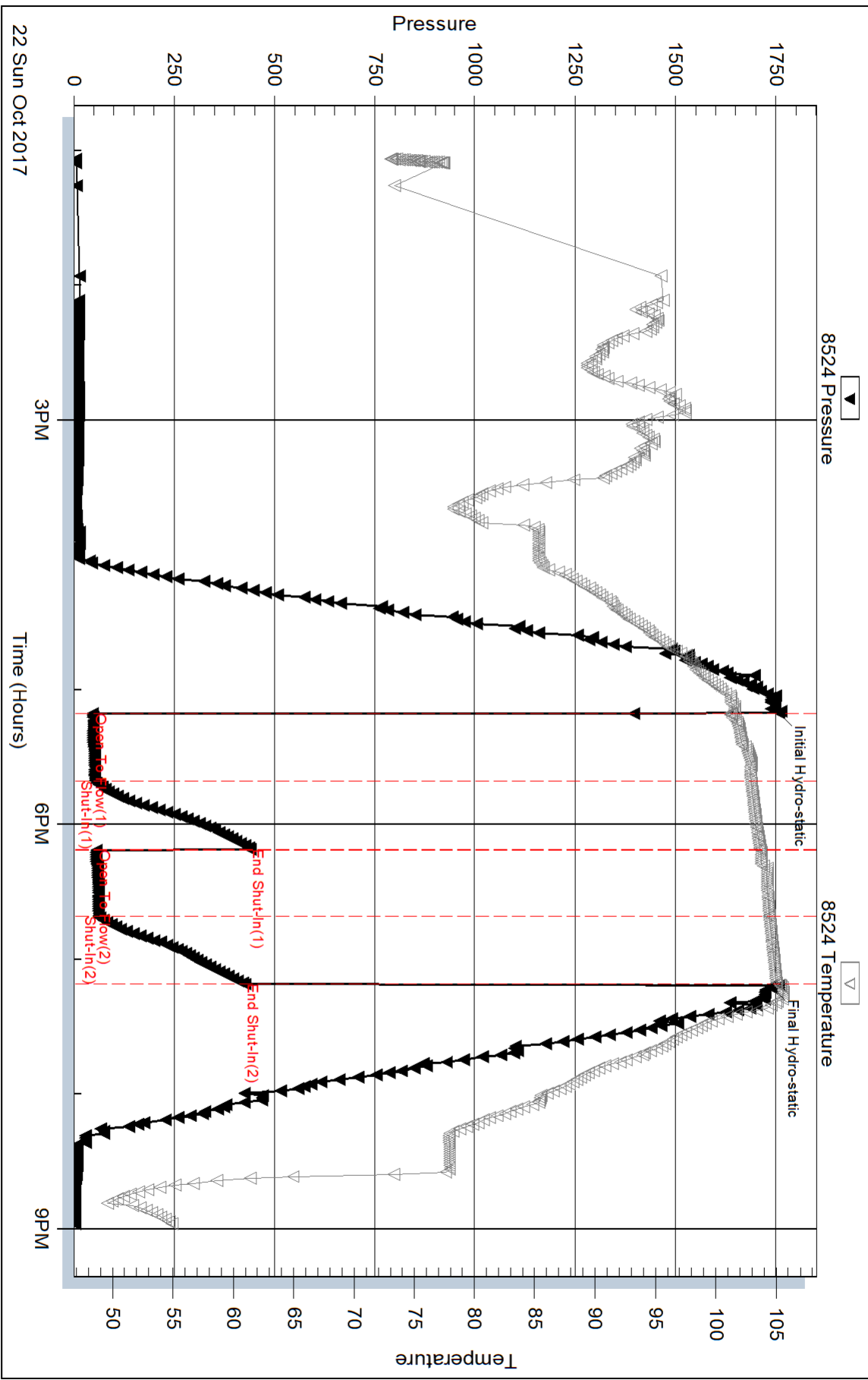
Serial #:

Laboratory Name:

Laboratory Location:

Recovery Comments:

### Pressure vs. Time



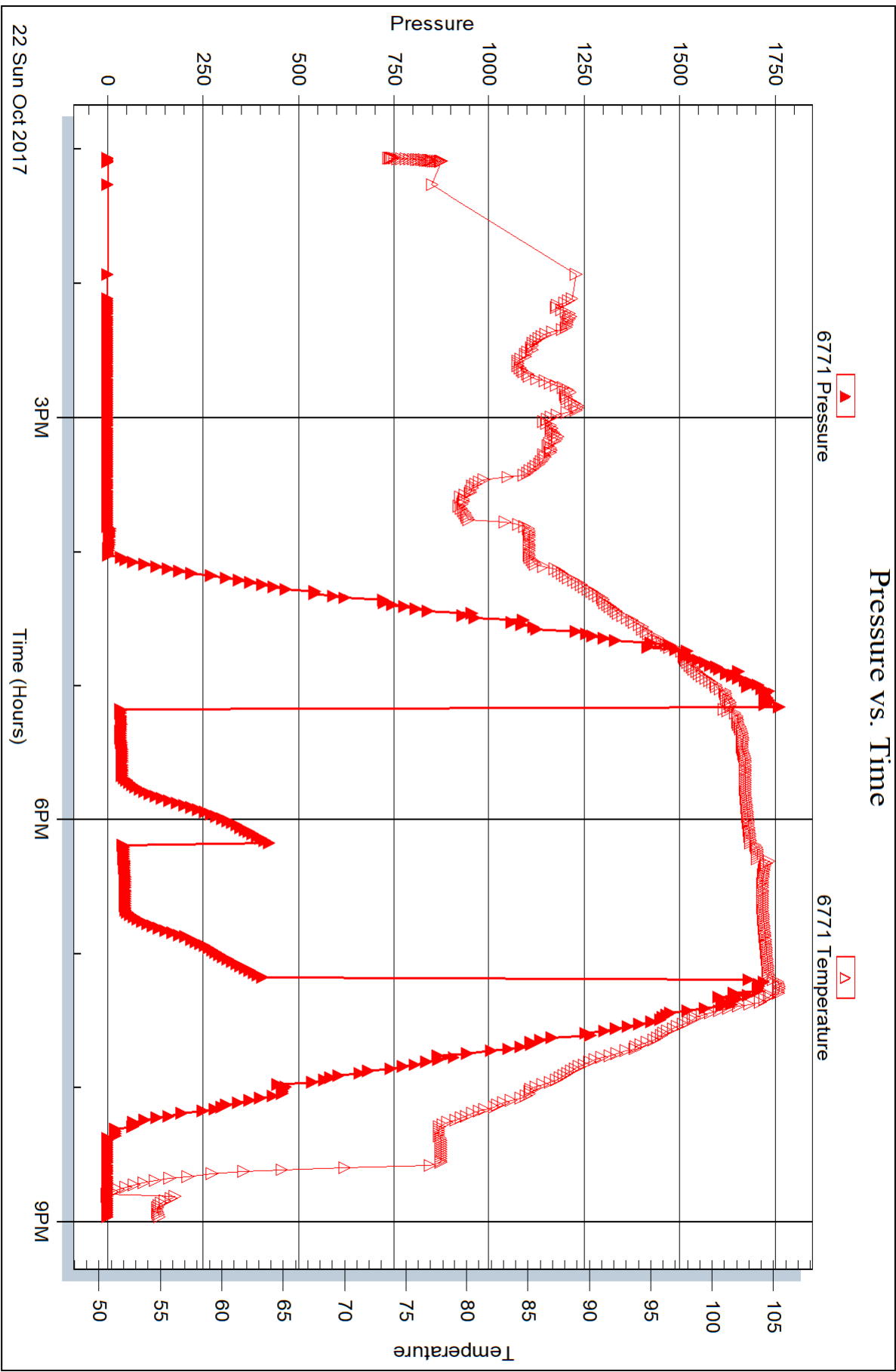
Serial #: 6771

Inside

Downing Nelson Oil Co., Inc

Cook-Priddy #1-35

DST Test Number: 1





## DRILL STEM TEST REPORT

Prepared For: **Downing Nelson Oil Co., Inc**

PO Box 1019  
Hays, KS 67601

ATTN: Marc Downing

### **Cook-Priddy #1-35**

### **35-11S-23W Trego,KS**

Start Date: 2017.10.23 @ 03:30:24

End Date: 2017.10.23 @ 09:05:00

Job Ticket #: 63102                      DST #: 2

Trilobite Testing, Inc

PO Box 362 Hays, KS 67601

ph: 785-625-4778 fax: 785-625-5620

Printed: 2017.10.30 @ 13:24:18





**TRILOBITE TESTING, INC.**

# DRILL STEM TEST REPORT

Downing Nelson Oil Co., Inc

**35-11S-23W Trego, KS**

PO Box 1019  
Hays, KS 67601

**Cook-Priddy #1-35**

Job Ticket: 63102

**DST#: 2**

ATTN: Marc Downing

Test Start: 2017.10.23 @ 03:30:24

## GENERAL INFORMATION:

Formation: **LKC "C"**

Deviated: No Whipstock: ft (KB)

Time Tool Opened: 05:43:15

Time Test Ended: 09:05:00

Test Type: Conventional Bottom Hole (Reset)

Tester: Brannan Lonsdale

Unit No: 73

**Interval: 3641.00 ft (KB) To 3666.00 ft (KB) (TVD)**

Reference Elevations: 2367.00 ft (KB)

Total Depth: 3666.00 ft (KB) (TVD)

2359.00 ft (CF)

Hole Diameter: 7.88 inches Hole Condition: Poor

KB to GR/CF: 8.00 ft

**Serial #: 8524 Outside**

Press@RunDepth: 49.24 psig @ 3642.00 ft (KB)

Capacity: 8000.00 psig

Start Date: 2017.10.23

End Date:

2017.10.23

Last Calib.:

2017.10.23

Start Time:

03:30:25

End Time:

09:05:00

Time On Btm:

2017.10.23 @ 05:42:45

Time Off Btm:

2017.10.23 @ 07:44:00

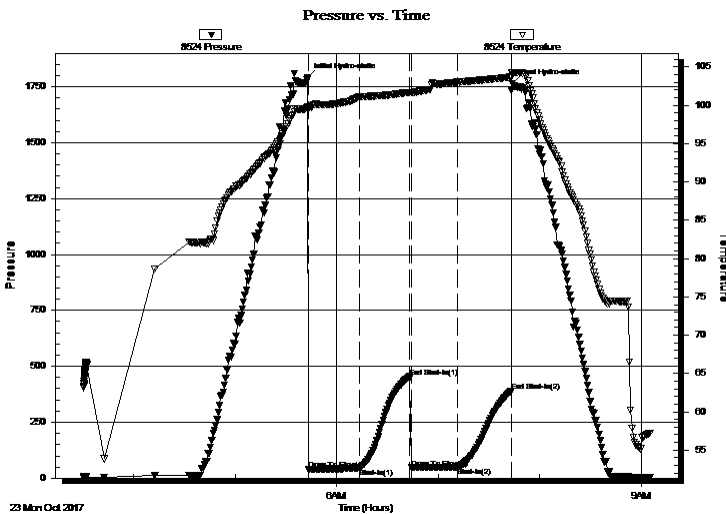
TEST COMMENT: 30- IF- Weak surface blow

30- IS- No blow

30- FF- Surface blow died 3 mins Flushed tool Surface blow died 1 min

30- FSI- No blow

## PRESSURE SUMMARY



Time (Min.)	Pressure (psig)	Temp (deg F)	Annotation
0	1788.76	99.83	Initial Hydro-static
1	38.54	99.72	Open To Flow (1)
31	44.92	101.09	Shut-In(1)
61	453.17	101.70	End Shut-In(1)
62	46.10	101.65	Open To Flow (2)
89	49.24	103.04	Shut-In(2)
121	388.35	103.69	End Shut-In(2)
122	1764.55	104.23	Final Hydro-static

## Recovery

Length (ft)	Description	Volume (bbl)
45.00	SOCM, 5%O 95%M	0.34

\* Recovery from multiple tests

## Gas Rates

Choke (inches)	Pressure (psig)	Gas Rate (Mcf/d)





**TRILOBITE  
TESTING, INC.**

# DRILL STEM TEST REPORT

**TOOL DIAGRAM**

Downing Nelson Oil Co., Inc

**35-11S-23W Trego,KS**

PO Box 1019  
Hays, KS 67601

**Cook-Priddy #1-35**

Job Ticket: 63102

**DST#: 2**

ATTN: Marc Downing

Test Start: 2017.10.23 @ 03:30:24

## Tool Information

Drill Pipe:	Length: 3616.00 ft	Diameter: 3.82 inches	Volume: 51.26 bbl	Tool Weight: 2000.00 lb
Heavy Wt. Pipe:	Length: ft	Diameter: inches	Volume: - bbl	Weight set on Packer: 25000.00 lb
Drill Collar:	Length: 32.00 ft	Diameter: 2.25 inches	Volume: 0.16 bbl	Weight to Pull Loose: 59000.00 lb
			<u>Total Volume: - bbl</u>	Tool Chased 3.00 ft
Drill Pipe Above KB:	27.00 ft			String Weight: Initial 52000.00 lb
Depth to Top Packer:	3641.00 ft			Final 52000.00 lb
Depth to Bottom Packer:	ft			
Interval between Packers:	25.00 ft			
Tool Length:	45.00 ft			
Number of Packers:	2	Diameter: 6.75 inches		

Tool Comments:

## Tool Description

Tool Description	Length (ft)	Serial No.	Position	Depth (ft)	Accum. Lengths
Change Over Sub	1.00			3622.00	
Shut In Tool	5.00			3627.00	
Hydraulic tool	5.00			3632.00	
Packer	5.00			3637.00	20.00 Bottom Of Top Packer
Packer	4.00			3641.00	
Stubb	1.00			3642.00	
Recorder	0.00	6771	Inside	3642.00	
Recorder	0.00	8524	Outside	3642.00	
Perforations	21.00			3663.00	
Bullnose	3.00			3666.00	25.00 Bottom Packers & Anchor
<b>Total Tool Length:</b>	<b>45.00</b>				



**TRILOBITE  
TESTING, INC.**

# DRILL STEM TEST REPORT

**FLUID SUMMARY**

Downing Nelson Oil Co., Inc

**35-11S-23W Trego,KS**

PO Box 1019  
Hays, KS 67601

**Cook-Priddy #1-35**

Job Ticket: 63102

**DST#: 2**

ATTN: Marc Downing

Test Start: 2017.10.23 @ 03:30:24

## Mud and Cushion Information

Mud Type: Gel Chem

Cushion Type:

Oil API:

deg API

Mud Weight: 9.00 lb/gal

Cushion Length:

ft

Water Salinity:

ppm

Viscosity: 54.00 sec/qt

Cushion Volume:

bbbl

Water Loss: 7.58 in<sup>3</sup>

Gas Cushion Type:

Resistivity: ohm.m

Gas Cushion Pressure:

psig

Salinity: 2500.00 ppm

Filter Cake: inches

## Recovery Information

Recovery Table

Length ft	Description	Volume bbbl
45.00	SOCM, 5%O 95%M	0.342

Total Length: 45.00 ft      Total Volume: 0.342 bbl

Num Fluid Samples: 0

Num Gas Bombs: 0

Serial #:

Laboratory Name:

Laboratory Location:

Recovery Comments:

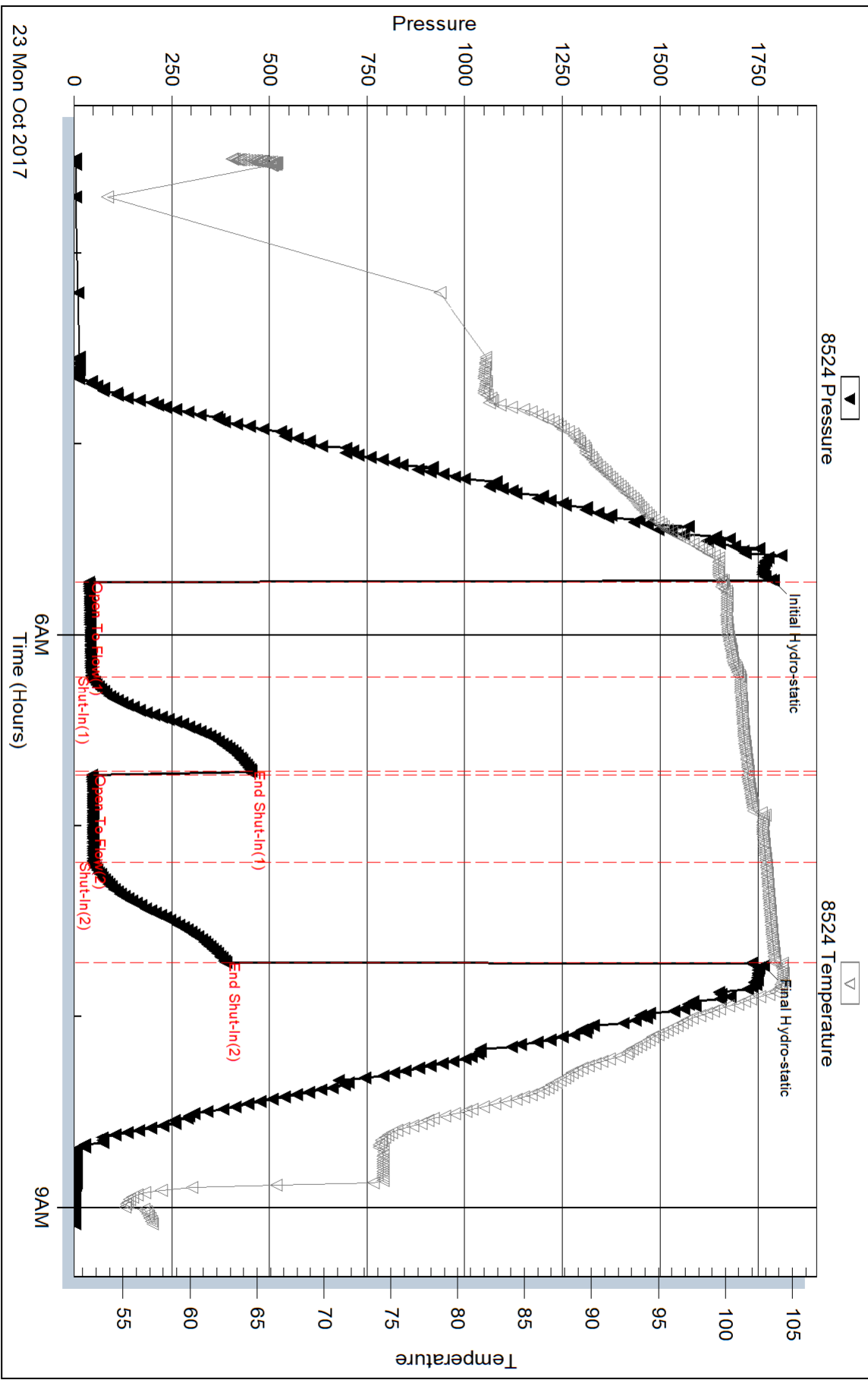
Serial #: 8524

Outside Downing Nelson Oil Co., Inc

Cook-Priddy #1-35

DST Test Number: 2

### Pressure vs. Time



Trilobite Testing, Inc

Ref. No: 63102

Printed: 2017.10.30 @ 13:24:19

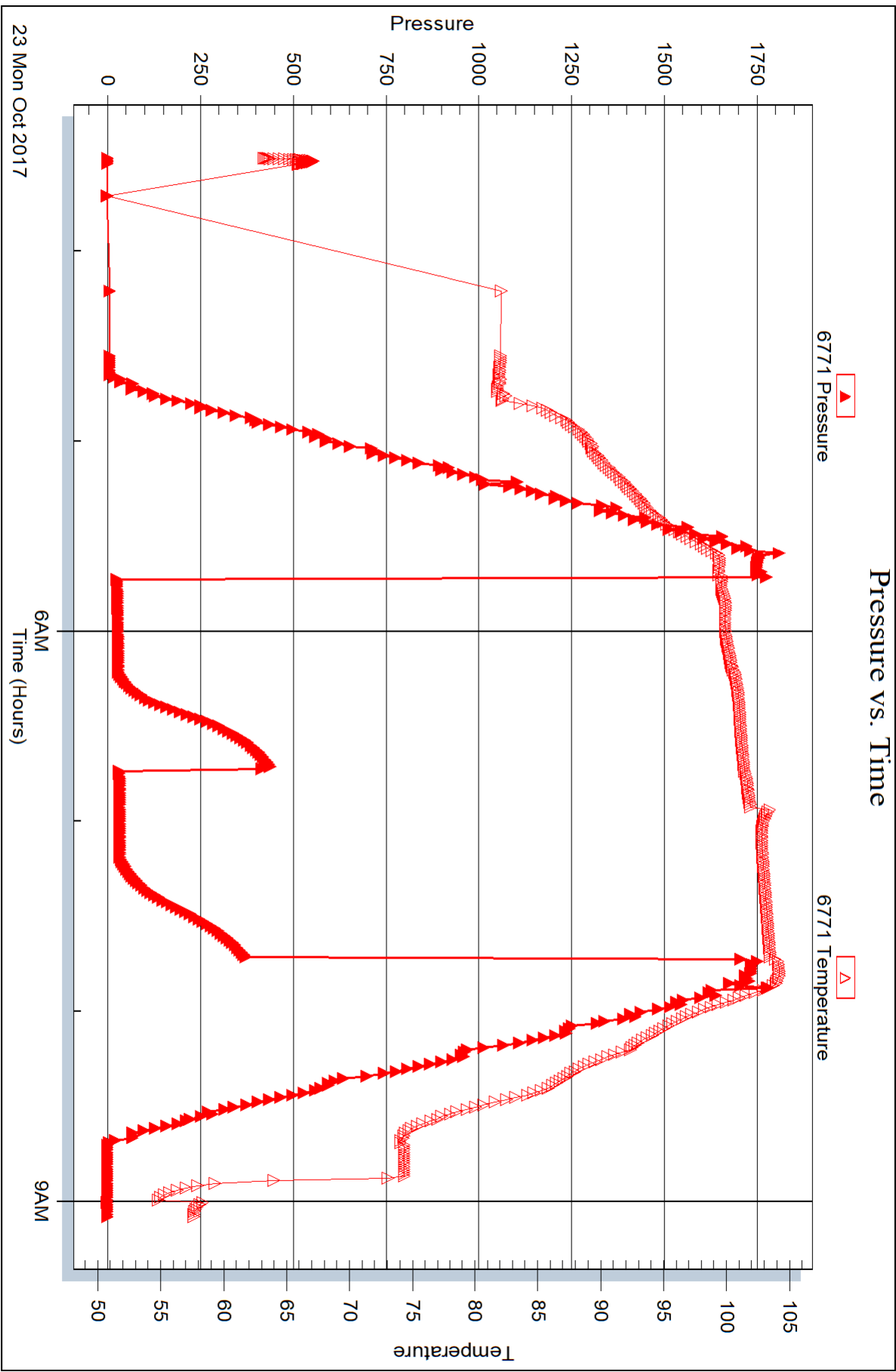
Serial #: 6771

Inside

Downing Nelson Oil Co., Inc

Cook-Priddy #1-35

DST Test Number: 2





## DRILL STEM TEST REPORT

Prepared For: **Downing Nelson Oil Co., Inc**

PO Box 1019  
Hays, KS 67601

ATTN: Marc Downing

### **Cook-Priddy #1-35**

### **35-11S-23W Trego,KS**

Start Date: 2017.10.23 @ 16:10:56

End Date: 2017.10.23 @ 22:40:32

Job Ticket #: 63103                      DST #: 3

Trilobite Testing, Inc

PO Box 362 Hays, KS 67601

ph: 785-625-4778 fax: 785-625-5620

Printed: 2017.10.30 @ 13:23:53



**TRILOBITE TESTING, INC.**

# DRILL STEM TEST REPORT

Downing Nelson Oil Co., Inc

**35-11S-23W Trego, KS**

PO Box 1019  
Hays, KS 67601

**Cook-Priddy #1-35**

Job Ticket: 63103

**DST#: 3**

ATTN: Marc Downing

Test Start: 2017.10.23 @ 16:10:56

## GENERAL INFORMATION:

Formation: **LKC "E"**

Deviated: No Whipstock: ft (KB)

Time Tool Opened: 17:58:02

Time Test Ended: 22:40:32

Test Type: Conventional Bottom Hole (Reset)

Tester: Brannan Lonsdale

Unit No: 73

**Interval: 3679.00 ft (KB) To 3694.00 ft (KB) (TVD)**

Reference Elevations: 2367.00 ft (KB)

Total Depth: 3694.00 ft (KB) (TVD)

2359.00 ft (CF)

Hole Diameter: 7.88 inches Hole Condition: Fair

KB to GR/CF: 8.00 ft

**Serial #: 8524 Outside**

Press@RunDepth: 81.23 psig @ 3680.00 ft (KB)

Capacity: 8000.00 psig

Start Date: 2017.10.23

End Date:

2017.10.23

Last Calib.:

2017.10.23

Start Time: 16:10:57

End Time:

22:40:32

Time On Btm:

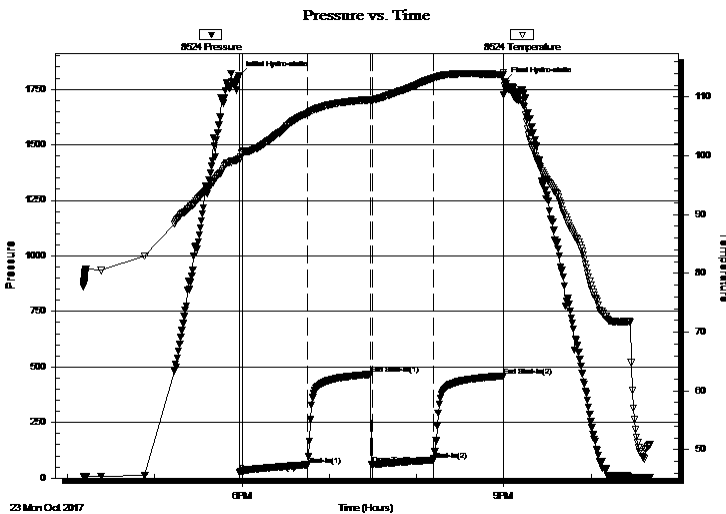
2017.10.23 @ 17:57:47

Time Off Btm:

2017.10.23 @ 21:00:32

TEST COMMENT: 45- IF- Built very slow ly to 4"  
45- IS- No blow  
45- FF- Built very slow ly to 2"  
45- FS- No blow

## PRESSURE SUMMARY



Time (Min.)	Pressure (psig)	Temp (deg F)	Annotation
0	1810.35	99.55	Initial Hydro-static
1	25.76	99.23	Open To Flow (1)
47	59.80	107.19	Shut-In(1)
91	466.65	109.53	End Shut-In(1)
92	61.65	109.48	Open To Flow (2)
134	81.23	113.20	Shut-In(2)
182	459.20	113.83	End Shut-In(2)
183	1781.97	111.84	Final Hydro-static

## Recovery

Length (ft)	Description	Volume (bbl)
111.00	MW, 15%M 85%W	1.28

\* Recovery from multiple tests

## Gas Rates

Choke (inches)	Pressure (psig)	Gas Rate (Mcf/d)





**TRILOBITE TESTING, INC.**

**DRILL STEM TEST REPORT**

Downing Nelson Oil Co., Inc

**35-11S-23W Trego, KS**

PO Box 1019  
Hays, KS 67601

**Cook-Priddy #1-35**

Job Ticket: 63103

**DST#: 3**

ATTN: Marc Downing

Test Start: 2017.10.23 @ 16:10:56

**GENERAL INFORMATION:**

Formation: **LKC "E"**  
 Deviated: No Whipstock: ft (KB)  
 Time Tool Opened: 17:58:02  
 Time Test Ended: 22:40:32  
 Interval: **3679.00 ft (KB) To 3694.00 ft (KB) (TVD)**  
 Total Depth: 3694.00 ft (KB) (TVD)  
 Hole Diameter: 7.88 inches Hole Condition: Fair  
 Test Type: Conventional Bottom Hole (Reset)  
 Tester: Brannan Lonsdale  
 Unit No: 73  
 Reference Elevations: 2367.00 ft (KB)  
 2359.00 ft (CF)  
 KB to GR/CF: 8.00 ft

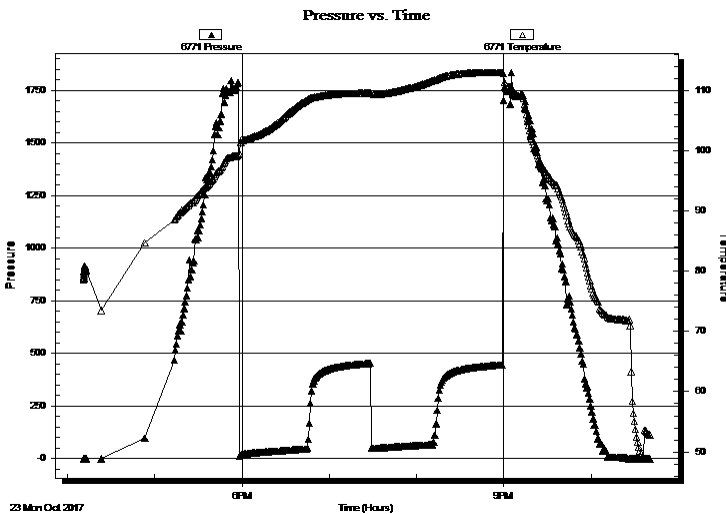
**Serial #: 6771**

**Inside**

Press@RunDepth: psig @ 3680.00 ft (KB) Capacity: 8000.00 psig  
 Start Date: 2017.10.23 End Date: 2017.10.23 Last Calib.: 2017.10.23  
 Start Time: 16:10:57 End Time: 22:40:17 Time On Btm:  
 Time Off Btm:

TEST COMMENT: 45- IF- Built very slow ly to 4"  
 45- IS- No blow  
 45- FF- Built very slow ly to 2"  
 45- FS- No blow

**PRESSURE SUMMARY**



Time (Min.)	Pressure (psig)	Temp (deg F)	Annotation

**Recovery**

Length (ft)	Description	Volume (bbl)
111.00	MW, 15%M 85%W	1.28

\* Recovery from multiple tests

**Gas Rates**

Choke (inches)	Pressure (psig)	Gas Rate (Mcf/d)



**TRILOBITE  
TESTING, INC.**

# DRILL STEM TEST REPORT

**TOOL DIAGRAM**

Downing Nelson Oil Co., Inc

**35-11S-23W Trego,KS**

PO Box 1019  
Hays, KS 67601

**Cook-Priddy #1-35**

Job Ticket: 63103

**DST#: 3**

ATTN: Marc Downing

Test Start: 2017.10.23 @ 16:10:56

## Tool Information

Drill Pipe:	Length: 3645.00 ft	Diameter: 3.82 inches	Volume: 51.67 bbl	Tool Weight:	2000.00 lb
Heavy Wt. Pipe:	Length: ft	Diameter: inches	Volume: - bbl	Weight set on Packer:	25000.00 lb
Drill Collar:	Length: 32.00 ft	Diameter: 2.25 inches	Volume: 0.16 bbl	Weight to Pull Loose:	54000.00 lb
			<u>Total Volume:</u>	Tool Chased	0.00 ft
			- bbl	String Weight: Initial	53000.00 lb
Drill Pipe Above KB:	18.00 ft			Final	53000.00 lb
Depth to Top Packer:	3679.00 ft				
Depth to Bottom Packer:	ft				
Interval between Packers:	15.00 ft				
Tool Length:	35.00 ft				
Number of Packers:	2	Diameter: 6.75 inches			
Tool Comments:					

## Tool Description

Tool Description	Length (ft)	Serial No.	Position	Depth (ft)	Accum. Lengths
Change Over Sub	1.00			3660.00	
Shut In Tool	5.00			3665.00	
Hydraulic tool	5.00			3670.00	
Packer	5.00			3675.00	20.00 Bottom Of Top Packer
Packer	4.00			3679.00	
Stubb	1.00			3680.00	
Recorder	0.00	6771	Inside	3680.00	
Recorder	0.00	8524	Outside	3680.00	
Perforations	11.00			3691.00	
Bullnose	3.00			3694.00	15.00 Bottom Packers & Anchor
<b>Total Tool Length:</b>	<b>35.00</b>				



**TRILOBITE  
TESTING, INC.**

**DRILL STEM TEST REPORT**

**FLUID SUMMARY**

Downing Nelson Oil Co., Inc

**35-11S-23W Trego,KS**

PO Box 1019  
Hays, KS 67601

**Cook-Priddy #1-35**

Job Ticket: 63103

**DST#: 3**

ATTN: Marc Downing

Test Start: 2017.10.23 @ 16:10:56

**Mud and Cushion Information**

Mud Type: Gel Chem

Cushion Type:

Oil API:

deg API

Mud Weight: 9.00 lb/gal

Cushion Length:

ft

Water Salinity:

70000 ppm

Viscosity: 48.00 sec/qt

Cushion Volume:

bbbl

Water Loss: 7.59 in<sup>3</sup>

Gas Cushion Type:

Resistivity: ohm.m

Gas Cushion Pressure:

psig

Salinity: 2500.00 ppm

Filter Cake: inches

**Recovery Information**

Recovery Table

Length ft	Description	Volume bbl
111.00	MW, 15%M 85%W	1.277

Total Length: 111.00 ft      Total Volume: 1.277 bbl

Num Fluid Samples: 0

Num Gas Bombs: 0

Serial #:

Laboratory Name:

Laboratory Location:

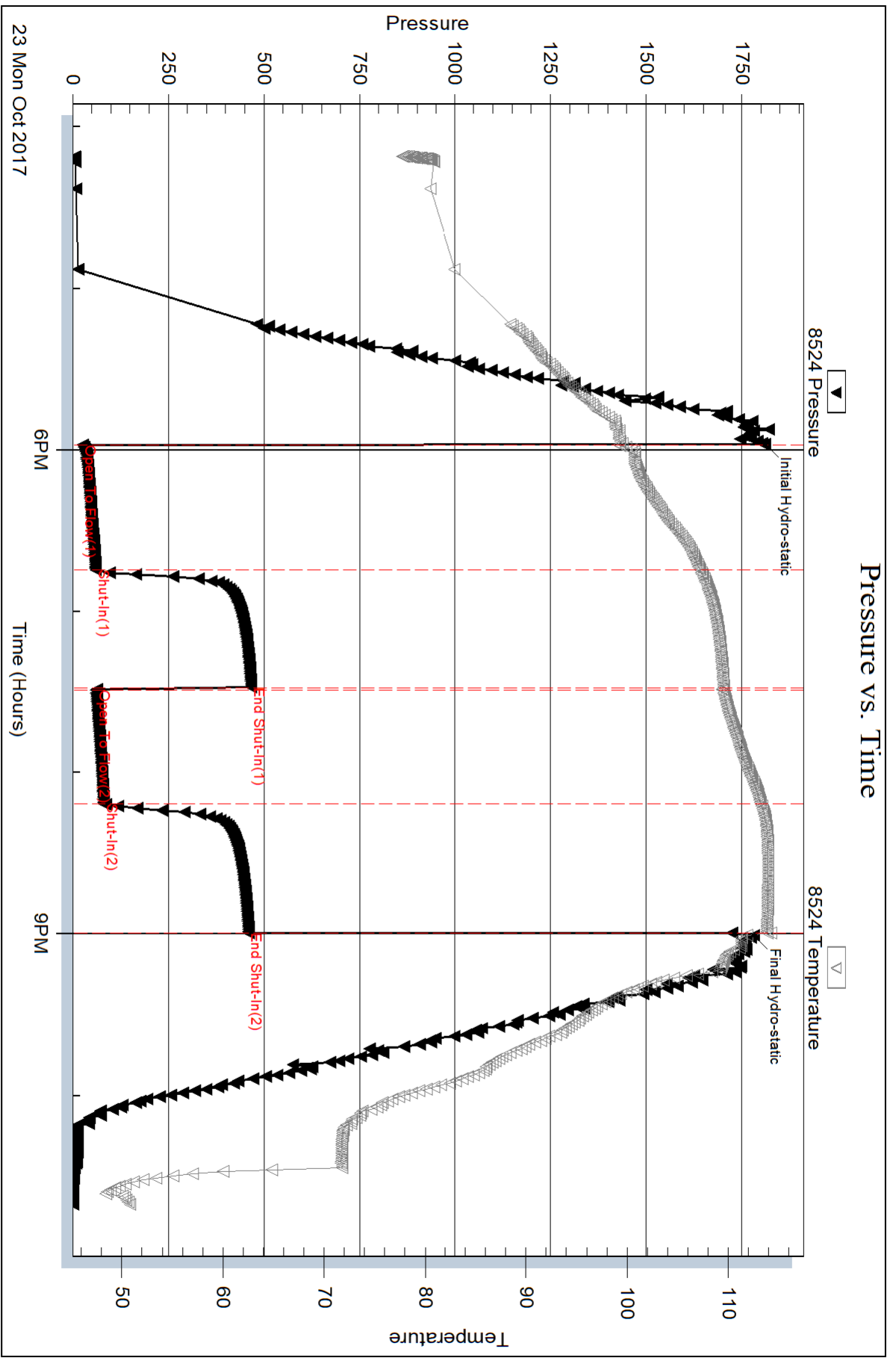
Recovery Comments: RW: .12 @ 54 deg

Serial #: 8524

Outside Downing Nelson Oil Co., Inc

Cook-Priddy #1-35

DST Test Number: 3



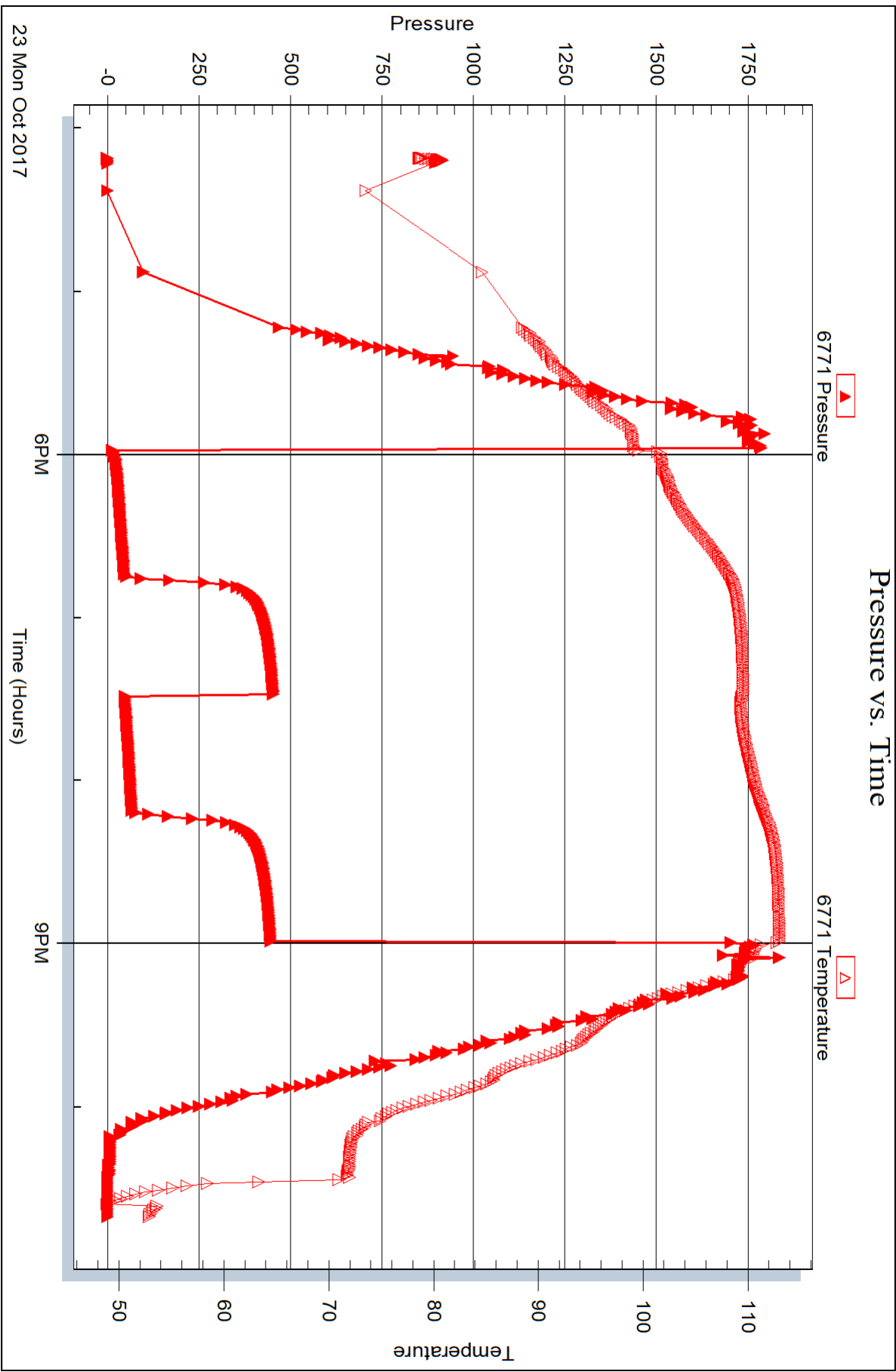
Serial #: 6771

Inside

Dow n ing Nelson Oil Co., Inc

Cook-Prid dy #1-35

DST Test Number: 3





## DRILL STEM TEST REPORT

Prepared For: **Downing Nelson Oil Co., Inc**

PO Box 1019  
Hays, KS 67601

ATTN: Marc Downing

### **Cook-Priddy #1-35**

### **35-11S-23W Trego,KS**

Start Date: 2017.10.24 @ 07:08:17

End Date: 2017.10.24 @ 13:44:23

Job Ticket #: 63104                      DST #: 4

Trilobite Testing, Inc

PO Box 362 Hays, KS 67601

ph: 785-625-4778 fax: 785-625-5620

Printed: 2017.10.30 @ 13:23:31



**TRILOBITE TESTING, INC.**

# DRILL STEM TEST REPORT

Downing Nelson Oil Co., Inc

**35-11S-23W Trego, KS**

PO Box 1019  
Hays, KS 67601

**Cook-Priddy #1-35**

Job Ticket: 63104

**DST#: 4**

ATTN: Marc Downing

Test Start: 2017.10.24 @ 07:08:17

## GENERAL INFORMATION:

Formation: **LKC "G"**

Deviated: No Whipstock: ft (KB)

Time Tool Opened: 09:07:08

Time Test Ended: 13:44:23

Test Type: Conventional Bottom Hole (Reset)

Tester: Brannan Lonsdale

Unit No: 73

**Interval: 3709.00 ft (KB) To 3727.00 ft (KB) (TVD)**

Reference Elevations: 2367.00 ft (KB)

Total Depth: 3727.00 ft (KB) (TVD)

2359.00 ft (CF)

Hole Diameter: 7.88 inches Hole Condition: Fair

KB to GR/CF: 8.00 ft

**Serial #: 8524 Outside**

Press@RunDepth: 67.06 psig @ 3710.00 ft (KB)

Capacity: 8000.00 psig

Start Date: 2017.10.24 End Date: 2017.10.24

Last Calib.: 2017.10.24

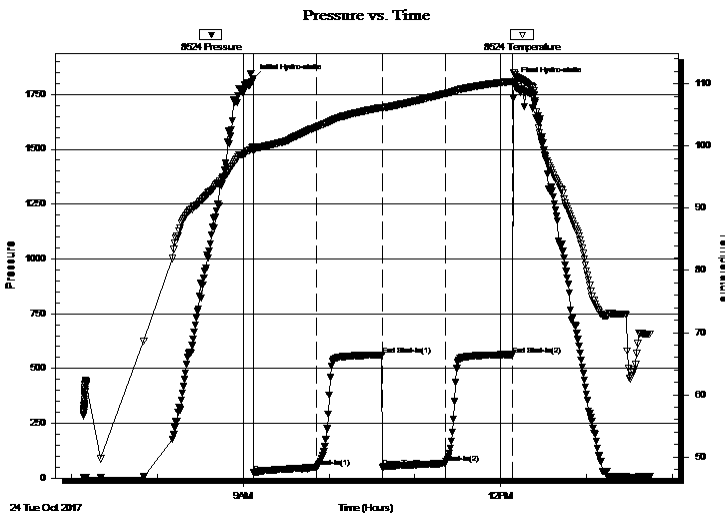
Start Time: 07:08:18 End Time: 13:44:23

Time On Btm: 2017.10.24 @ 09:06:53

Time Off Btm: 2017.10.24 @ 12:09:23

**TEST COMMENT:** 45- IF- Built very slow ly to 4"  
45- IS- No blow  
45- FF- Built very slow ly to 4"  
45- FS- No blow

## PRESSURE SUMMARY



Time (Min.)	Pressure (psig)	Temp (deg F)	Annotation
0	1821.16	99.88	Initial Hydro-static
1	24.22	99.17	Open To Flow (1)
45	48.91	103.05	Shut-In(1)
91	560.84	106.21	End Shut-In(1)
91	50.21	106.12	Open To Flow (2)
135	67.06	108.41	Shut-In(2)
182	563.15	110.39	End Shut-In(2)
183	1805.77	111.70	Final Hydro-static

## Recovery

Length (ft)	Description	Volume (bbl)
69.00	SOCMW, 5%O 45%M 50%W	0.68
10.00	CO	0.14

\* Recovery from multiple tests

## Gas Rates

Choke (inches)	Pressure (psig)	Gas Rate (Mcf/d)



**TRILOBITE TESTING, INC.**

# DRILL STEM TEST REPORT

Downing Nelson Oil Co., Inc

**35-11S-23W Trego, KS**

PO Box 1019  
Hays, KS 67601

**Cook-Priddy #1-35**

Job Ticket: 63104 **DST#: 4**

ATTN: Marc Downing

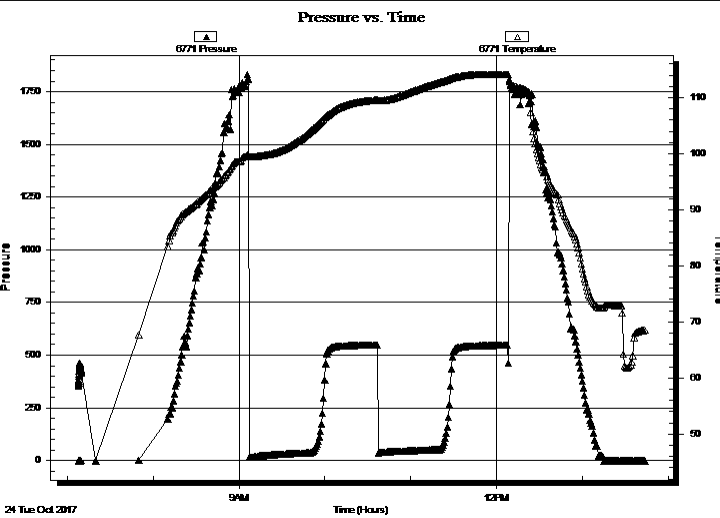
Test Start: 2017.10.24 @ 07:08:17

## GENERAL INFORMATION:

**Formation:** LKC "G"  
**Deviated:** No Whipstock: ft (KB)  
**Time Tool Opened:** 09:07:08  
**Time Test Ended:** 13:44:23  
**Interval:** 3709.00 ft (KB) To 3727.00 ft (KB) (TVD)  
**Total Depth:** 3727.00 ft (KB) (TVD)  
**Hole Diameter:** 7.88 inches **Hole Condition:** Fair  
**Test Type:** Conventional Bottom Hole (Reset)  
**Tester:** Brannan Lonsdale  
**Unit No:** 73  
**Reference Elevations:** 2367.00 ft (KB)  
 2359.00 ft (CF)  
**KB to GR/CF:** 8.00 ft

**Serial #: 6771 Inside**  
**Press@RunDepth:** psig @ 3710.00 ft (KB) **Capacity:** 8000.00 psig  
**Start Date:** 2017.10.24 **End Date:** 2017.10.24 **Last Calib.:** 2017.10.24  
**Start Time:** 07:08:01 **End Time:** 13:43:51 **Time On Btm:**  
**Time Off Btm:**

**TEST COMMENT:** 45- IF- Built very slow ly to 4"  
 45- IS- No blow  
 45- FF- Built very slow ly to 4"  
 45- FS- No blow



## PRESSURE SUMMARY

Time (Min.)	Pressure (psig)	Temp (deg F)	Annotation

## Recovery

Length (ft)	Description	Volume (bbl)
69.00	SOCMW, 5%O 45%M 50%W	0.68
10.00	CO	0.14

\* Recovery from multiple tests

## Gas Rates

Choke (inches)	Pressure (psig)	Gas Rate (Mcf/d)





**TRILOBITE  
TESTING, INC.**

# DRILL STEM TEST REPORT

**TOOL DIAGRAM**

Downing Nelson Oil Co., Inc

**35-11S-23W Trego,KS**

PO Box 1019  
Hays, KS 67601

**Cook-Priddy #1-35**

Job Ticket: 63104

**DST#: 4**

ATTN: Marc Downing

Test Start: 2017.10.24 @ 07:08:17

## Tool Information

Drill Pipe:	Length: 3677.00 ft	Diameter: 3.82 inches	Volume: 52.12 bbl	Tool Weight: 2000.00 lb
Heavy Wt. Pipe:	Length: ft	Diameter: inches	Volume: - bbl	Weight set on Packer: 25000.00 lb
Drill Collar:	Length: 32.00 ft	Diameter: 2.25 inches	Volume: 0.16 bbl	Weight to Pull Loose: 58000.00 lb
			<u>Total Volume: - bbl</u>	Tool Chased 0.00 ft
Drill Pipe Above KB:	20.00 ft			String Weight: Initial 53000.00 lb
Depth to Top Packer:	3709.00 ft			Final 53000.00 lb
Depth to Bottom Packer:	ft			
Interval between Packers:	18.00 ft			
Tool Length:	38.00 ft			
Number of Packers:	2	Diameter: 6.75 inches		

Tool Comments:

Tool Description	Length (ft)	Serial No.	Position	Depth (ft)	Accum. Lengths
------------------	-------------	------------	----------	------------	----------------

Change Over Sub	1.00			3690.00	
Shut In Tool	5.00			3695.00	
Hydraulic tool	5.00			3700.00	
Packer	5.00			3705.00	20.00 Bottom Of Top Packer
Packer	4.00			3709.00	
Stubb	1.00			3710.00	
Recorder	0.00	6771	Inside	3710.00	
Recorder	0.00	8524	Outside	3710.00	
Perforations	14.00			3724.00	
Bullnose	3.00			3727.00	18.00 Bottom Packers & Anchor
<b>Total Tool Length:</b>	<b>38.00</b>				



**TRILOBITE  
TESTING, INC.**

**DRILL STEM TEST REPORT**

**FLUID SUMMARY**

Downing Nelson Oil Co., Inc

**35-11S-23W Trego,KS**

PO Box 1019  
Hays, KS 67601

**Cook-Priddy #1-35**

Job Ticket: 63104

**DST#: 4**

ATTN: Marc Downing

Test Start: 2017.10.24 @ 07:08:17

**Mud and Cushion Information**

Mud Type: Gel Chem

Cushion Type:

Oil API:

34 deg API

Mud Weight: 9.00 lb/gal

Cushion Length:

ft

Water Salinity:

115000 ppm

Viscosity: 48.00 sec/qt

Cushion Volume:

bbbl

Water Loss: 7.59 in<sup>3</sup>

Gas Cushion Type:

Resistivity: ohm.m

Gas Cushion Pressure:

psig

Salinity: 2500.00 ppm

Filter Cake: inches

**Recovery Information**

Recovery Table

Length ft	Description	Volume bbbl
69.00	SOCMW, 5%O 45%M 50%W	0.682
10.00	CO	0.142

Total Length: 79.00 ft      Total Volume: 0.824 bbl

Num Fluid Samples: 0

Num Gas Bombs: 0

Serial #:

Laboratory Name:

Laboratory Location:

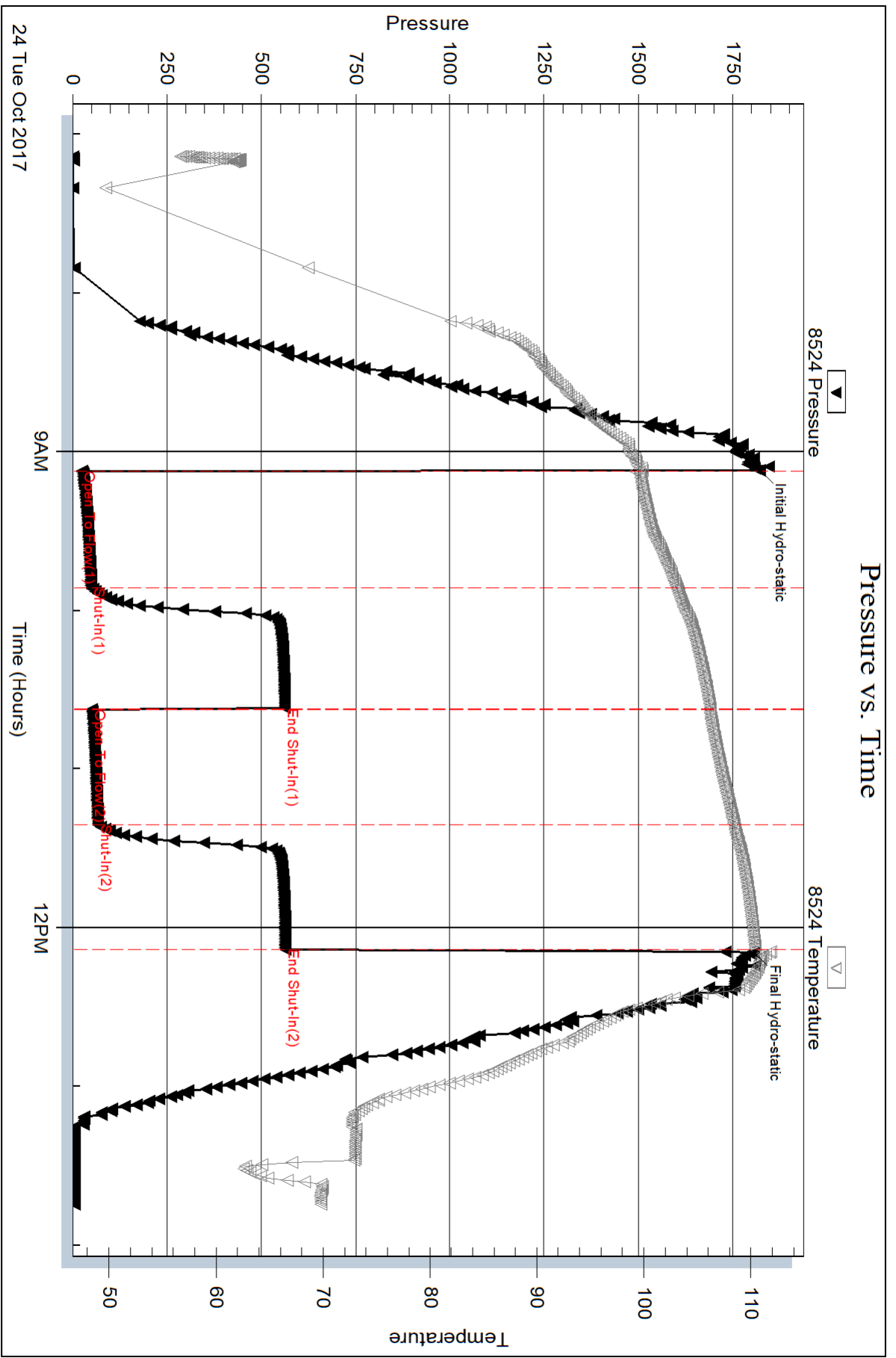
Recovery Comments: RW: .07@60deg

Serial #: 8524

Outside Dow nting Nelson Oil Co., Inc

Cook-Priddy #1-35

DST Test Number: 4



Triobite Testing, Inc

Ref. No: 63104

Printed: 2017.10.30 @ 13:23:32

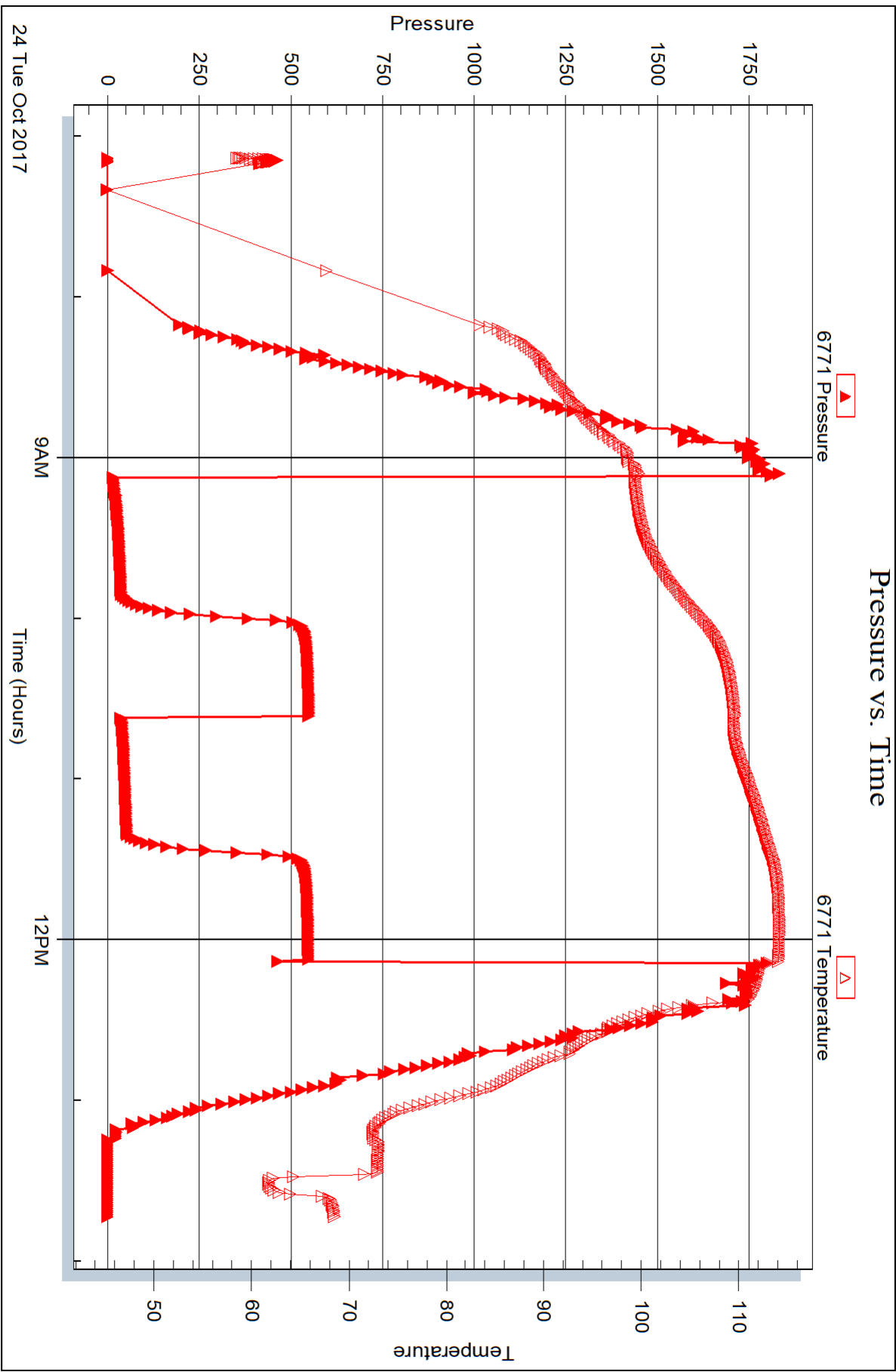
Serial #: 6771

Inside

Downing Nelson Oil Co., Inc

Cook-Priddy #1-35

DST Test Number: 4





## DRILL STEM TEST REPORT

Prepared For: **Downing Nelson Oil Co., Inc**

PO Box 1019  
Hays, KS 67601

ATTN: Marc Downing

### **Cook-Priddy #1-35**

### **35-11S-23W Trego,KS**

Start Date: 2017.10.25 @ 00:41:58

End Date: 2017.10.25 @ 07:33:49

Job Ticket #: 63105                      DST #: 5

Trilobite Testing, Inc

PO Box 362 Hays, KS 67601

ph: 785-625-4778 fax: 785-625-5620

Printed: 2017.10.30 @ 13:17:12



**TRILOBITE TESTING, INC.**

# DRILL STEM TEST REPORT

Downing Nelson Oil Co., Inc

**35-11S-23W Trego, KS**

PO Box 1019  
Hays, KS 67601

**Cook-Priddy #1-35**

Job Ticket: 63105

**DST#: 5**

ATTN: Marc Downing

Test Start: 2017.10.25 @ 00:41:58

## GENERAL INFORMATION:

Formation: **LKC "H-K"**

Deviated: No Whipstock: ft (KB)

Time Tool Opened: 02:51:04

Time Test Ended: 07:33:49

Test Type: Conventional Bottom Hole (Reset)

Tester: Brannan Lonsdale

Unit No: 73

**Interval: 3738.00 ft (KB) To 3828.00 ft (KB) (TVD)**

Reference Elevations: 2367.00 ft (KB)

Total Depth: 3828.00 ft (KB) (TVD)

2359.00 ft (CF)

Hole Diameter: 7.88 inches Hole Condition: Fair

KB to GR/CF: 8.00 ft

**Serial #: 8524 Outside**

Press@RunDepth: 46.09 psig @ 3739.00 ft (KB)

Capacity: 8000.00 psig

Start Date: 2017.10.25 End Date: 2017.10.25

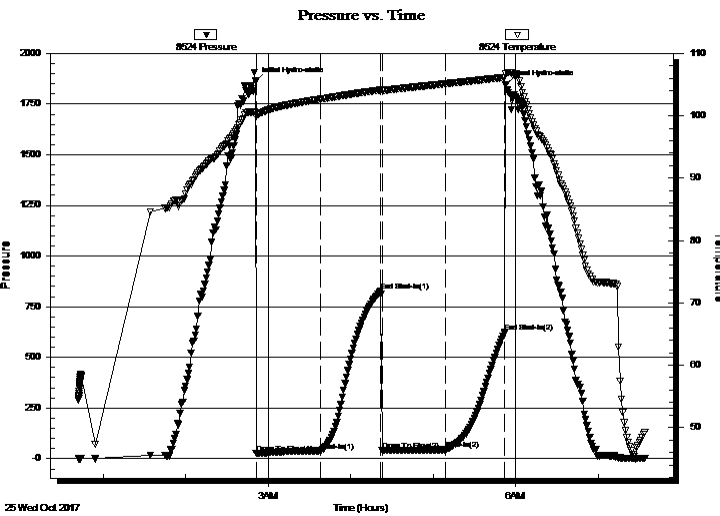
Last Calib.: 2017.10.25

Start Time: 00:41:59 End Time: 07:33:49

Time On Btm: 2017.10.25 @ 02:50:49

Time Off Btm: 2017.10.25 @ 05:52:49

**TEST COMMENT:** 45- IF- Built very slow ly to 3"  
45- IS- No blow  
45- FF- Built very slow ly to 3"  
45- FS- No blow



## PRESSURE SUMMARY

Time (Min.)	Pressure (psig)	Temp (deg F)	Annotation
0	1862.67	100.45	Initial Hydro-static
1	27.30	99.88	Open To Flow (1)
48	39.32	102.69	Shut-In(1)
91	826.04	104.14	End Shut-In(1)
93	41.08	104.04	Open To Flow (2)
139	46.09	105.15	Shut-In(2)
182	622.97	106.17	End Shut-In(2)
182	1845.92	106.79	Final Hydro-static

## Recovery

Length (ft)	Description	Volume (bbl)
48.00	OCM, 30%O 70%M	0.38

\* Recovery from multiple tests

## Gas Rates

Choke (inches)	Pressure (psig)	Gas Rate (Mcf/d)



**TRILOBITE TESTING, INC.**

# DRILL STEM TEST REPORT

Downing Nelson Oil Co., Inc

**35-11S-23W Trego, KS**

PO Box 1019  
Hays, KS 67601

**Cook-Priddy #1-35**

Job Ticket: 63105

**DST#: 5**

ATTN: Marc Downing

Test Start: 2017.10.25 @ 00:41:58

## GENERAL INFORMATION:

Formation: **LKC "H-K"**  
 Deviated: No Whipstock: ft (KB)  
 Time Tool Opened: 02:51:04  
 Time Test Ended: 07:33:49  
 Interval: **3738.00 ft (KB) To 3828.00 ft (KB) (TVD)**  
 Total Depth: 3828.00 ft (KB) (TVD)  
 Hole Diameter: 7.88 inches Hole Condition: Fair  
 Test Type: Conventional Bottom Hole (Reset)  
 Tester: Brannan Lonsdale  
 Unit No: 73  
 Reference Elevations: 2367.00 ft (KB)  
 2359.00 ft (CF)  
 KB to GR/CF: 8.00 ft

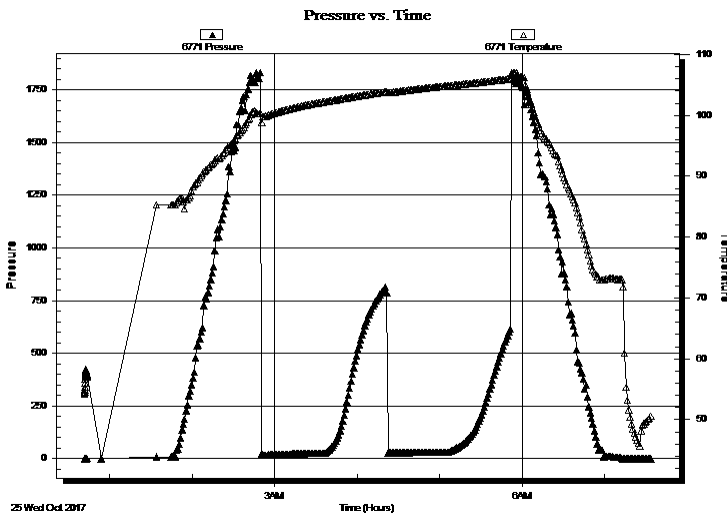
## Serial #: 6771

Inside

Press@RunDepth: psig @ 3739.00 ft (KB) Capacity: 8000.00 psig  
 Start Date: 2017.10.25 End Date: 2017.10.25 Last Calib.: 2017.10.25  
 Start Time: 00:41:49 End Time: 07:33:39 Time On Btm:  
 Time Off Btm:

TEST COMMENT: 45- IF- Built very slow ly to 3"  
 45- IS- No blow  
 45- FF- Built very slow ly to 3"  
 45- FS- No blow

## PRESSURE SUMMARY



Time (Min.)	Pressure (psig)	Temp (deg F)	Annotation

## Recovery

Length (ft)	Description	Volume (bbl)
48.00	OCM, 30%O 70%M	0.38

\* Recovery from multiple tests

## Gas Rates

Choke (inches)	Pressure (psig)	Gas Rate (Mcf/d)



**TRILOBITE  
TESTING, INC.**

# DRILL STEM TEST REPORT

**TOOL DIAGRAM**

Downing Nelson Oil Co., Inc

**35-11S-23W Trego,KS**

PO Box 1019  
Hays, KS 67601

**Cook-Priddy #1-35**

Job Ticket: 63105

**DST#: 5**

ATTN: Marc Downing

Test Start: 2017.10.25 @ 00:41:58

## Tool Information

Drill Pipe:	Length: 3708.00 ft	Diameter: 3.82 inches	Volume: 52.56 bbl	Tool Weight: 2000.00 lb
Heavy Wt. Pipe:	Length: ft	Diameter: inches	Volume: - bbl	Weight set on Packer: 25000.00 lb
Drill Collar:	Length: 32.00 ft	Diameter: 2.25 inches	Volume: 0.16 bbl	Weight to Pull Loose: 62000.00 lb
			<u>Total Volume: - bbl</u>	Tool Chased 0.00 ft
Drill Pipe Above KB:	22.00 ft			String Weight: Initial 53000.00 lb
Depth to Top Packer:	3738.00 ft			Final 53000.00 lb
Depth to Bottom Packer:	ft			
Interval between Packers:	90.00 ft			
Tool Length:	110.00 ft			
Number of Packers:	2	Diameter: 6.75 inches		

Tool Comments:

Tool Description	Length (ft)	Serial No.	Position	Depth (ft)	Accum. Lengths
------------------	-------------	------------	----------	------------	----------------

Change Over Sub	1.00			3719.00	
Shut In Tool	5.00			3724.00	
Hydraulic tool	5.00			3729.00	
Packer	5.00			3734.00	20.00 Bottom Of Top Packer
Packer	4.00			3738.00	
Stubb	1.00			3739.00	
Recorder	0.00	6771	Inside	3739.00	
Recorder	0.00	8524	Outside	3739.00	
Perforations	21.00			3760.00	
Change Over Sub	1.00			3761.00	
Drill Pipe	63.00			3824.00	
Change Over Sub	1.00			3825.00	
Bullnose	3.00			3828.00	90.00 Bottom Packers & Anchor

**Total Tool Length: 110.00**





**TRILOBITE  
TESTING, INC.**

# DRILL STEM TEST REPORT

## FLUID SUMMARY

Downing Nelson Oil Co., Inc

**35-11S-23W Trego,KS**

PO Box 1019  
Hays, KS 67601

**Cook-Priddy #1-35**

Job Ticket: 63105

**DST#: 5**

ATTN: Marc Downing

Test Start: 2017.10.25 @ 00:41:58

### Mud and Cushion Information

Mud Type: Gel Chem

Cushion Type:

Oil API:

34 deg API

Mud Weight: 9.00 lb/gal

Cushion Length:

ft

Water Salinity:

ppm

Viscosity: 48.00 sec/qt

Cushion Volume:

bbbl

Water Loss: 7.59 in<sup>3</sup>

Gas Cushion Type:

Resistivity: ohm.m

Gas Cushion Pressure:

psig

Salinity: 3000.00 ppm

Filter Cake: inches

### Recovery Information

Recovery Table

Length ft	Description	Volume bbbl
48.00	OCM, 30%O 70%M	0.384

Total Length: 48.00 ft      Total Volume: 0.384 bbl

Num Fluid Samples: 0

Num Gas Bombs: 0

Serial #:

Laboratory Name:

Laboratory Location:

Recovery Comments:

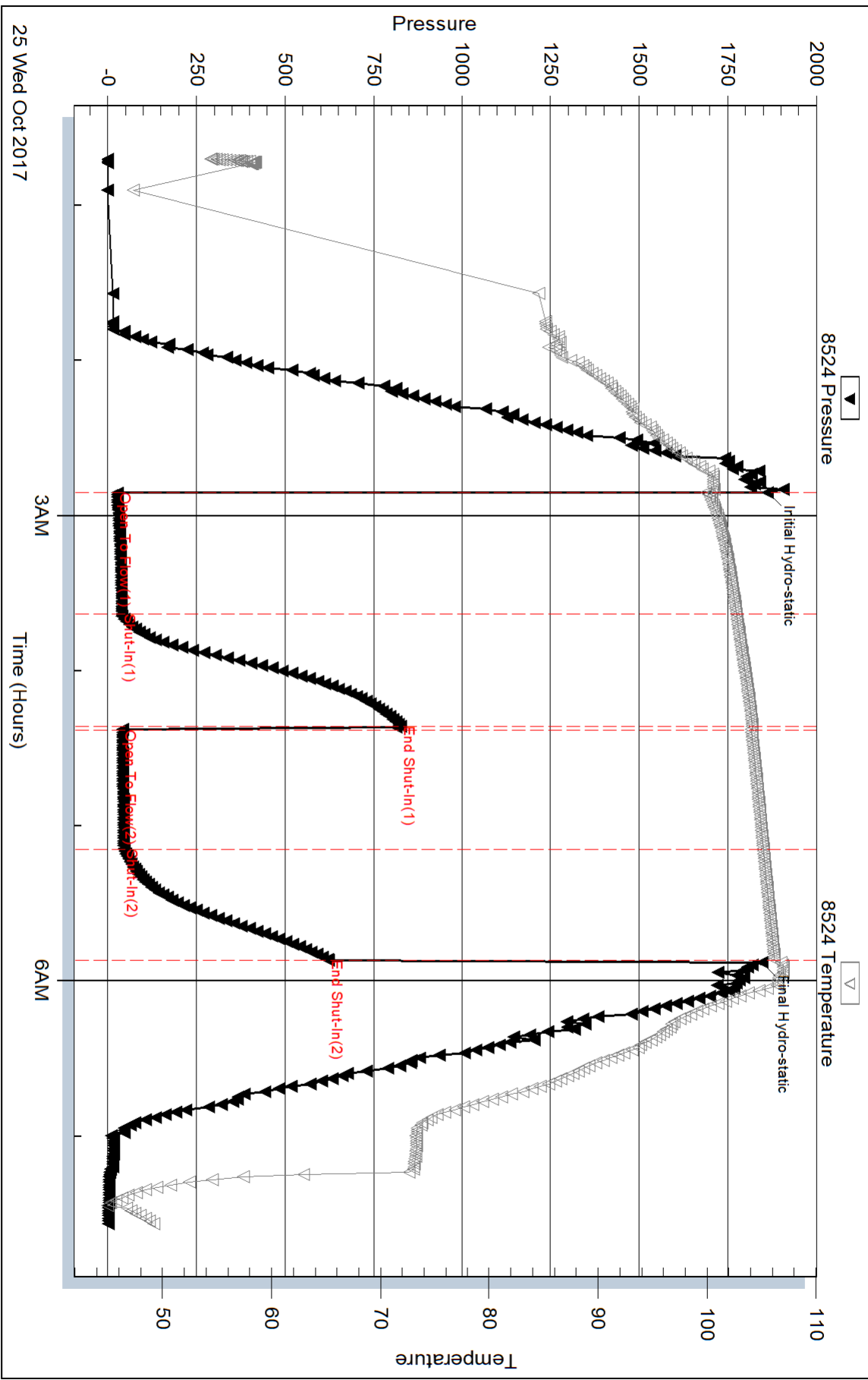
Serial #: 8524

Outside Dow n ing Nelson Oil Co., Inc

Cook-Priddy #1-35

DST Test Number: 5

### Pressure vs. Time



Triobite Testing, Inc

Ref. No: 63105

Printed: 2017.10.30 @ 13:17:13

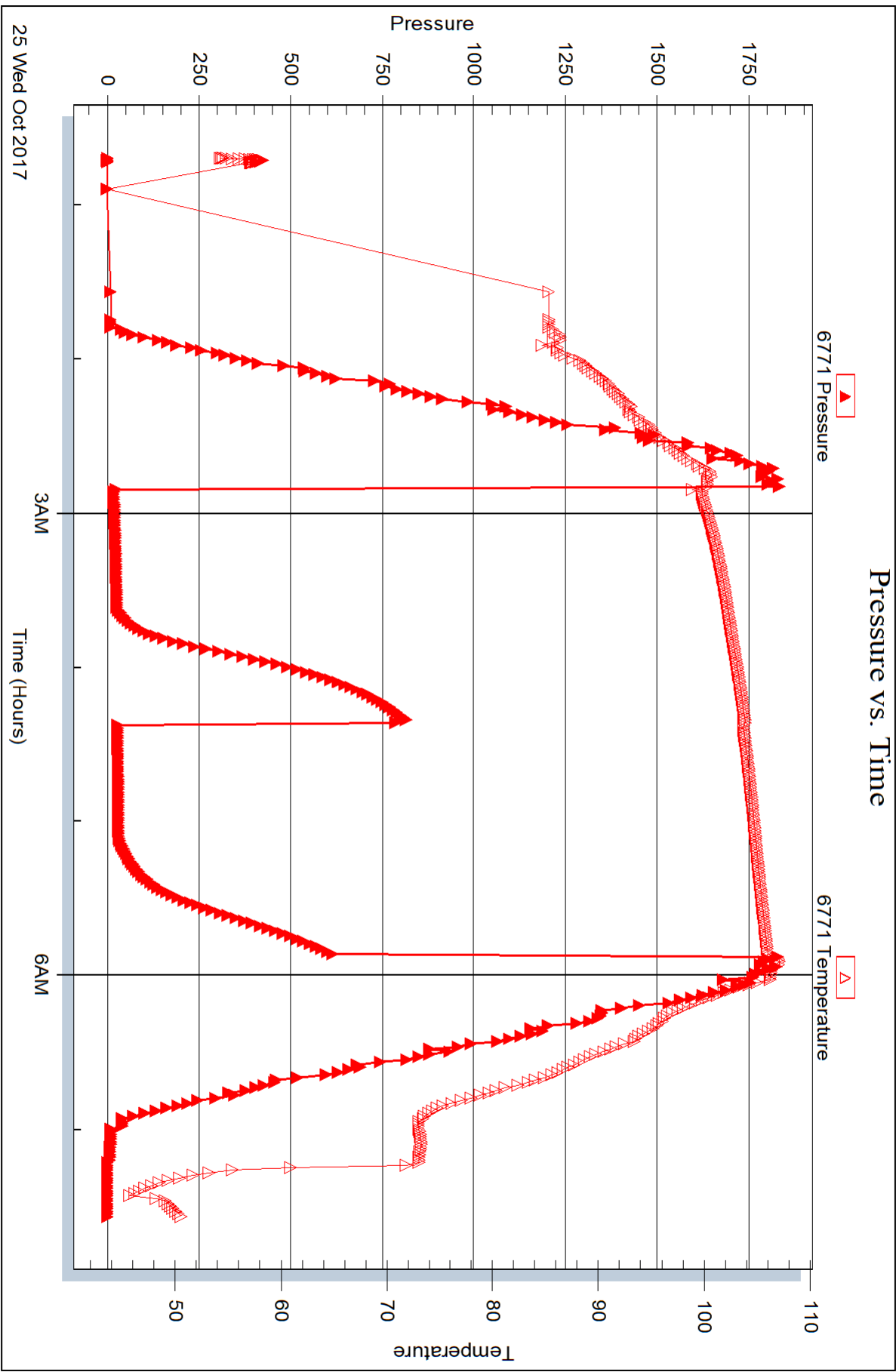
Serial #: 6771

Inside

Downing Nelson Oil Co., Inc

Cook-Priddy #1-35

DST Test Number: 5





## DRILL STEM TEST REPORT

Prepared For: **Downing Nelson Oil Co., Inc**

PO Box 1019  
Hays, KS 67601

ATTN: Marc Downing

### **Cook-Priddy #1-35**

### **35-11S-23W Trego,KS**

Start Date: 2017.10.25 @ 21:58:55

End Date: 2017.10.26 @ 03:18:46

Job Ticket #: 63106                      DST #: 6

Trilobite Testing, Inc

PO Box 362 Hays, KS 67601

ph: 785-625-4778 fax: 785-625-5620

Printed: 2017.10.30 @ 13:14:25



**TRILOBITE TESTING, INC.**

# DRILL STEM TEST REPORT

Downing Nelson Oil Co., Inc

**35-11S-23W Trego, KS**

PO Box 1019  
Hays, KS 67601

**Cook-Priddy #1-35**

Job Ticket: 63106

**DST#: 6**

ATTN: Marc Downing

Test Start: 2017.10.25 @ 21:58:55

## GENERAL INFORMATION:

Formation: **Marmaton**

Deviated: No Whipstock: ft (KB)

Time Tool Opened: 23:51:01

Time Test Ended: 03:18:46

Test Type: Conventional Bottom Hole (Reset)

Tester: Brannan Lonsdale

Unit No: 73

**Interval: 3961.00 ft (KB) To 4000.00 ft (KB) (TVD)**

Reference Elevations: 2367.00 ft (KB)

Total Depth: 4000.00 ft (KB) (TVD)

2359.00 ft (CF)

Hole Diameter: 7.88 inches Hole Condition: Fair

KB to GR/CF: 8.00 ft

**Serial #: 8524 Outside**

Press@RunDepth: 29.06 psig @ 3962.00 ft (KB)

Capacity: 8000.00 psig

Start Date: 2017.10.25

End Date:

2017.10.26

Last Calib.:

2017.10.26

Start Time: 21:58:56

End Time:

03:18:46

Time On Btm:

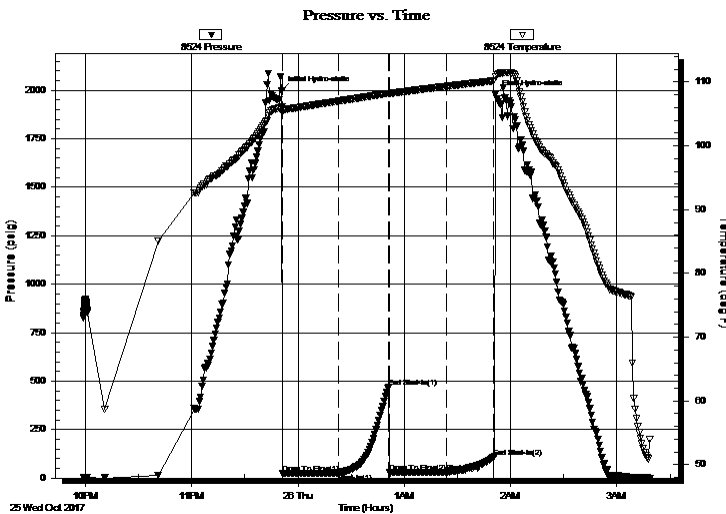
2017.10.25 @ 23:50:46

Time Off Btm:

2017.10.26 @ 01:51:31

TEST COMMENT: 30- IF- 1/2" blow  
30- IS- No blow  
30- FF- No blow  
30- FSI- No blow

## PRESSURE SUMMARY



Time (Min.)	Pressure (psig)	Temp (deg F)	Annotation
0	1998.91	106.04	Initial Hydro-static
1	22.86	105.24	Open To Flow (1)
32	26.35	106.99	Shut-In(1)
61	470.27	108.24	End Shut-In(1)
61	27.43	108.13	Open To Flow (2)
94	29.06	109.34	Shut-In(2)
120	109.04	110.19	End Shut-In(2)
121	1976.85	110.91	Final Hydro-static

## Recovery

## Gas Rates

Length (ft)	Description	Volume (bbl)
5.00	OSM	0.02

	Choke (inches)	Pressure (psig)	Gas Rate (Mcf/d)

\* Recovery from multiple tests





**TRILOBITE  
TESTING, INC.**

# DRILL STEM TEST REPORT

**TOOL DIAGRAM**

Downing Nelson Oil Co., Inc

**35-11S-23W Trego,KS**

PO Box 1019  
Hays, KS 67601

**Cook-Priddy #1-35**

Job Ticket: 63106

**DST#: 6**

ATTN: Marc Downing

Test Start: 2017.10.25 @ 21:58:55

## Tool Information

Drill Pipe:	Length: 3930.00 ft	Diameter: 3.82 inches	Volume: 55.71 bbl	Tool Weight: 2000.00 lb
Heavy Wt. Pipe:	Length: ft	Diameter: inches	Volume: - bbl	Weight set on Packer: 25000.00 lb
Drill Collar:	Length: 32.00 ft	Diameter: 2.25 inches	Volume: 0.16 bbl	Weight to Pull Loose: 58000.00 lb
			<u>Total Volume: - bbl</u>	Tool Chased 0.00 ft
Drill Pipe Above KB:	21.00 ft			String Weight: Initial 54000.00 lb
Depth to Top Packer:	3961.00 ft			Final 54000.00 lb
Depth to Bottom Packer:	ft			
Interval between Packers:	39.00 ft			
Tool Length:	59.00 ft			
Number of Packers:	2	Diameter: 6.75 inches		

Tool Comments:

Tool Description	Length (ft)	Serial No.	Position	Depth (ft)	Accum. Lengths
------------------	-------------	------------	----------	------------	----------------

Change Over Sub	1.00			3942.00	
Shut In Tool	5.00			3947.00	
Hydraulic tool	5.00			3952.00	
Packer	5.00			3957.00	20.00 Bottom Of Top Packer
Packer	4.00			3961.00	
Stubb	1.00			3962.00	
Recorder	0.00	6771	Inside	3962.00	
Recorder	0.00	8524	Outside	3962.00	
Perforations	2.00			3964.00	
Change Over Sub	1.00			3965.00	
Drill Pipe	31.00			3996.00	
Change Over Sub	1.00			3997.00	
Bullnose	3.00			4000.00	39.00 Bottom Packers & Anchor

**Total Tool Length: 59.00**



**TRILOBITE  
TESTING, INC.**

**DRILL STEM TEST REPORT**

**FLUID SUMMARY**

Downing Nelson Oil Co., Inc

**35-11S-23W Trego,KS**

PO Box 1019  
Hays, KS 67601

**Cook-Priddy #1-35**

Job Ticket: 63106

**DST#: 6**

ATTN: Marc Downing

Test Start: 2017.10.25 @ 21:58:55

**Mud and Cushion Information**

Mud Type: Gel Chem

Cushion Type:

Oil API:

deg API

Mud Weight: 9.00 lb/gal

Cushion Length:

ft

Water Salinity:

ppm

Viscosity: 54.00 sec/qt

Cushion Volume:

bbbl

Water Loss: 7.59 in<sup>3</sup>

Gas Cushion Type:

Resistivity: ohm.m

Gas Cushion Pressure:

psig

Salinity: 4000.00 ppm

Filter Cake: inches

**Recovery Information**

Recovery Table

Length ft	Description	Volume bbl
5.00	OSM	0.025

Total Length: 5.00 ft      Total Volume: 0.025 bbl

Num Fluid Samples: 0

Num Gas Bombs: 0

Serial #:

Laboratory Name:

Laboratory Location:

Recovery Comments:



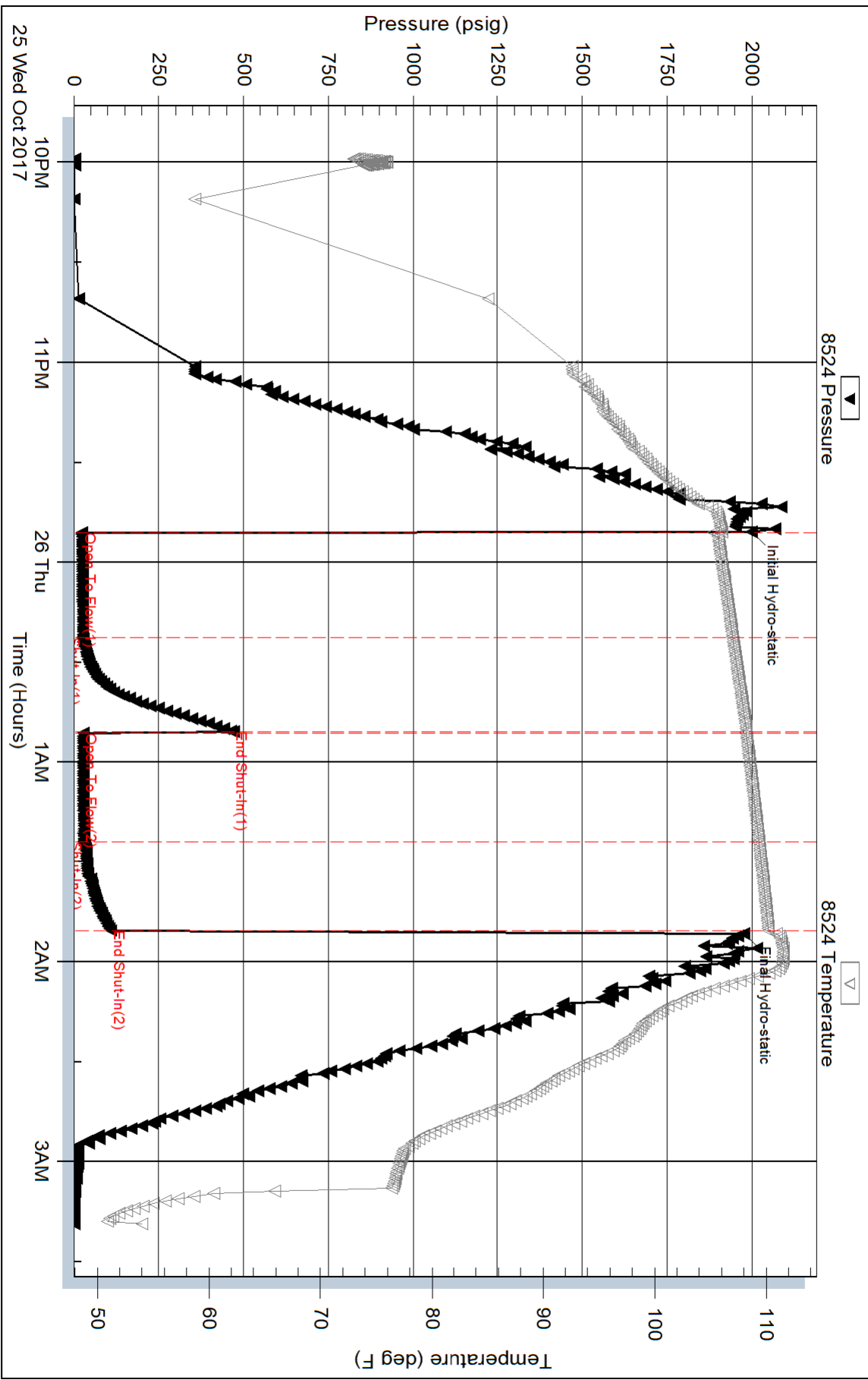
Serial #: 8524

Outside Dow nting Nelson Oil Co., Inc

Cook-Priddy #1-35

DST Test Number: 6

### Pressure vs. Time



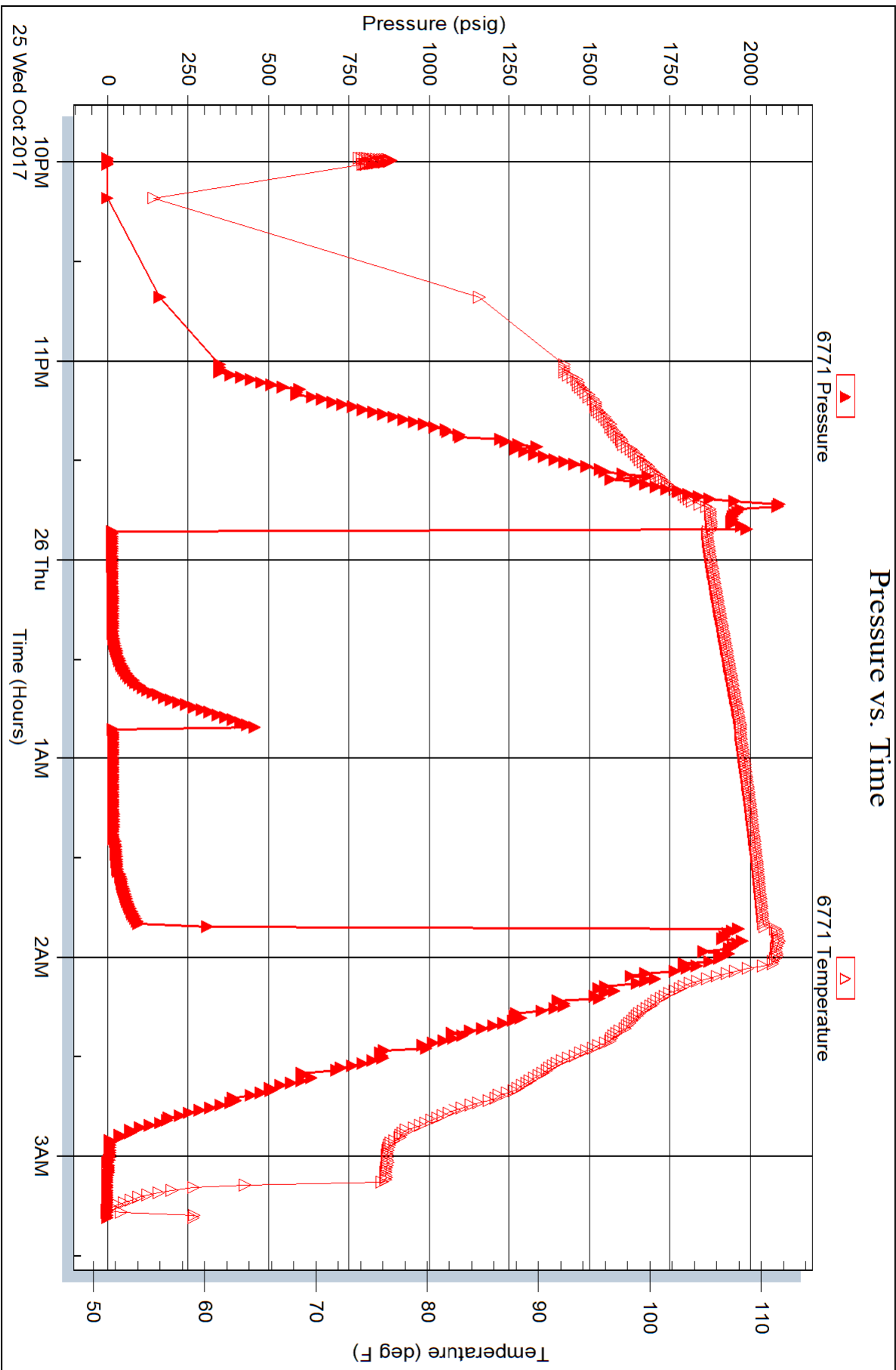
Serial #: 6771

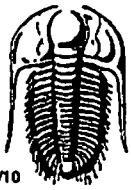
Inside

Downing Nelson Oil Co., Inc

Cook-Priddy #1-35

DST Test Number: 6





# TRILOBITE TESTING INC.

1515 Commerce Parkway • Hays, Kansas 67601

## Test Ticket

NO. 63101

Well Name & No. Cook - Priddy #1-35 Test No. 1 Date 10/22/17  
 Company Downing Nelson Oil Co, Inc. Elevation 2367 KB 2389 GL  
 Address PO Box 1019 Hays, KS 67601  
 Co. Rep / Geo. Marc Downing Rig Discovery #4  
 Location: Sec. 35 Twp. 11 S Rge. 23 WCo. Trego State KS

Interval Tested 3580-3645 Zone Tested Toronto @ LKC "A"  
 Anchor Length 65' Drill Pipe Run 3551 Mud Wt. 8.6  
 Top Packer Depth 3575 Drill Collars Run 32 Vis 58  
 Bottom Packer Depth 3580 Wt. Pipe Run --- WL 2.4  
 Total Depth 3645 Chlorides 2,600 ppm System LCM 3#

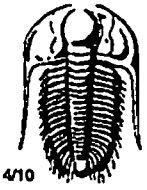
Blow Description IF - Surface blow died 5 mins  
IS2 - No blow  
FF - Surface blow died in 4 mins Fished tool surface blow 1 min  
FS2 - No blow

Rec	Feet of	%gas	%oil	%water	%mud
<u>25</u>	<u>DCM</u>		<u>25</u>		<u>25</u>
Rec	Feet of	%gas	%oil	%water	%mud
Rec	Feet of	%gas	%oil	%water	%mud
Rec	Feet of	%gas	%oil	%water	%mud
Rec	Feet of	%gas	%oil	%water	%mud

Rec Total 25' BHT 105° Gravity 34 API RW --- @ --- °F Chlorides --- ppm  
 (A) Initial Hydrostatic 1757  Test 1050 T-On Location 1247  
 (B) First Initial Flow 47  Jars \_\_\_\_\_ T-Started 1303  
 (C) First Final Flow 53  Safety Joint \_\_\_\_\_ T-Open 1710  
 (D) Initial Shut-In 439  Circ Sub \_\_\_\_\_ T-Pulled 1910  
 (E) Second Initial Flow 56  Hourly Standby \_\_\_\_\_ T-Out 2057  
 (F) Second Final Flow 62  Mileage 74 RT 55.50 Comments \_\_\_\_\_  
 (G) Final Shut-In 426  Sampler \_\_\_\_\_  
 (H) Final Hydrostatic 1739  Straddle \_\_\_\_\_

Initial Open 30  Shale Packer \_\_\_\_\_  
 Initial Shut-In 30  Ruined Packer \_\_\_\_\_  
 Final Flow 30  Extra Packer \_\_\_\_\_  
 Final Shut-In 30  Extra Recorder \_\_\_\_\_  
 Sub Total 0  
 Total 1105.50  
 Sub Total 1105.50  Day Standby \_\_\_\_\_  
 Accessibility \_\_\_\_\_  
 MP/DST Disc't \_\_\_\_\_

Approved By \_\_\_\_\_ Our Representative Brannan Lonsdale



# TRILOBITE TESTING INC.

1515 Commerce Parkway • Hays, Kansas 67601

## Test Ticket

NO. 63102

Well Name & No. Cook-Priddy #1-35 Test No. 2 Date 10/23/17  
 Company Downing Nelson Oil Co, Inc Elevation 2367 KB 2359 GL  
 Address PO Box 1019 Hays, KS 67601  
 Co. Rep / Geo. Marc Downing Rig Discovery #4  
 Location: Sec. 35 Twp. 11 S Rge. 23 Wco. Trego State KS

Interval Tested 3641-3666 Zone Tested LKC "C"  
 Anchor Length 25' Drill Pipe Run 3616 Mud Wt. 8.8  
 Top Packer Depth 3636 Drill Collars Run 32 Vis 54  
 Bottom Packer Depth 3641 Wt. Pipe Run \_\_\_\_\_ WL 2.6  
 Total Depth 3666 Chlorides 2,500 ppm System LCM 2#

Blow Description IF - Weak surface blow  
ISF - No blow  
FF - Surface blow died 3mins flushed tool surface blow low  
FSF No blow

Rec	Feet of	%gas	%oil	%water	%mud
<u>45</u>	<u>SOCM</u>		<u>5</u>	<u>95</u>	
Rec _____	Feet of _____	%gas _____	%oil _____	%water _____	%mud _____
Rec _____	Feet of _____	%gas _____	%oil _____	%water _____	%mud _____
Rec _____	Feet of _____	%gas _____	%oil _____	%water _____	%mud _____
Rec _____	Feet of _____	%gas _____	%oil _____	%water _____	%mud _____

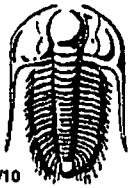
Rec Total 45' BHT 104° Gravity \_\_\_\_\_ API RW \_\_\_\_\_ @ \_\_\_\_\_ °F Chlorides \_\_\_\_\_ ppm

(A) Initial Hydrostatic 1789  Test 1050 T-On Location 0320  
 (B) First Initial Flow 39  Jars \_\_\_\_\_ T-Started 0330  
 (C) First Final Flow 45  Safety Joint \_\_\_\_\_ T-Open 0542  
 (D) Initial Shut-In 453  Circ Sub \_\_\_\_\_ T-Pulled 0742  
 (E) Second Initial Flow 46  Hourly Standby \_\_\_\_\_ T-Out 0904  
 (F) Second Final Flow 49  Mileage 74 RT 55.50 Comments \_\_\_\_\_  
 (G) Final Shut-In 388  Sampler \_\_\_\_\_  
 (H) Final Hydrostatic 1765  Straddle \_\_\_\_\_

Initial Open 30  Shale Packer \_\_\_\_\_  
 Initial Shut-In 30  Ruined Packer \_\_\_\_\_  
 Final Flow 30  Extra Packer \_\_\_\_\_  
 Final Shut-In 30  Extra Recorder \_\_\_\_\_  
 Sub Total 0  
 Total 1105.50  
 Sub Total 1105.50  Day Standby \_\_\_\_\_  
 Accessibility \_\_\_\_\_  
 MP/DST Disc't \_\_\_\_\_

Approved By \_\_\_\_\_

Our Representative Brannan Lonsdale



# TRILOBITE TESTING INC.

1515 Commerce Parkway • Hays, Kansas 67601

## Test Ticket

NO. 63103

Well Name & No. Cook - Paddy #1-35 Test No. 3 Date 10/23/17  
 Company Downing Nelson Oil Co, Inc. Elevation 2367 KB 2359 GL  
 Address PO Box 1019 Hays, KS 67601  
 Co. Rep / Geo. Marc Downing Rig Discovery #4  
 Location: Sec. 35 Twp. 11 S Rge. 23 W Co. Trego State KS

Interval Tested 3679-3694 Zone Tested LKC "E"  
 Anchor Length 15' Drill Pipe Run 3645 Mud Wt. 8.9  
 Top Packer Depth 3674 Drill Collars Run 32 Vis 48  
 Bottom Packer Depth 3679 Wt. Pipe Run \_\_\_\_\_ WL 7.6  
 Total Depth 3694 Chlorides 2,500 ppm System LCM 2<sup>st</sup>

Blow Description IF - Built slowly to 4"  
DSI - No blow  
FF - Built very slowly to 2"  
FST - No blow

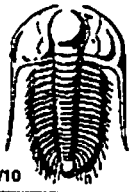
Rec	Feet of	%gas	%oil	%water	%mud
<u>111</u>	<u>MW</u>			<u>85</u>	<u>15</u>
Rec _____	Feet of _____	%gas _____	%oil _____	%water _____	%mud _____
Rec _____	Feet of _____	%gas _____	%oil _____	%water _____	%mud _____
Rec _____	Feet of _____	%gas _____	%oil _____	%water _____	%mud _____
Rec _____	Feet of _____	%gas _____	%oil _____	%water _____	%mud _____

Rec Total 111' BHT 114° Gravity \_\_\_\_\_ API RW .12 @ 54 °F Chlorides 20,000 ppm

(A) Initial Hydrostatic 1810  Test 1050 T-On Location 1608  
 (B) First Initial Flow 26  Jars \_\_\_\_\_ T-Started 1611  
 (C) First Final Flow 60  Safety Joint \_\_\_\_\_ T-Open 1758  
 (D) Initial Shut-In 467  Circ Sub \_\_\_\_\_ T-Pulled 2058  
 (E) Second Initial Flow 62  Hourly Standby \_\_\_\_\_ T-Out 2241  
 (F) Second Final Flow 81  Mileage 74 RT 55.50 Comments \_\_\_\_\_  
 (G) Final Shut-In 459  Sampler \_\_\_\_\_  
 (H) Final Hydrostatic 1782  Straddle \_\_\_\_\_

Initial Open 45  Shale Packer \_\_\_\_\_  
 Initial Shut-In 45  Ruined Packer \_\_\_\_\_  
 Final Flow 45  Extra Packer \_\_\_\_\_  
 Final Shut-In 45  Extra Recorder \_\_\_\_\_  
 Day Standby \_\_\_\_\_  
 Accessibility \_\_\_\_\_  
 Sub Total 1105.50 Sub Total \_\_\_\_\_  
 MP/DST Disc't \_\_\_\_\_

Approved By \_\_\_\_\_ Our Representative Brannan Lonsdale



# TRILOBITE TESTING INC.

1515 Commerce Parkway • Hays, Kansas 67601

## Test Ticket

NO. 63104

Well Name & No. Cook-Priddy #1-35 Test No. 4 Date 10/24/17  
 Company Downing Nelson Oil Co, Inc. Elevation 2367 KB 2359 GL  
 Address PO Box 1019 Hays, KS 67601  
 Co. Rep / Geo. Marc Downing Rig Discovery #4  
 Location: Sec. 35 Twp. 11 S Rge. 23 W Co. Trego State KS

Interval Tested 3709-3727 Zone Tested LKC "G"  
 Anchor Length 18' Drill Pipe Run 3677 Mud Wt. 8.9  
 Top Packer Depth 3704 Drill Collars Run 32 Vis 48  
 Bottom Packer Depth 3709 Wt. Pipe Run — WL 7.6  
 Total Depth 3727 Chlorides 3500 ppm System LCM 2<sup>nd</sup>

Blow Description IF - Built very slowly to 4"  
ISI - No blow  
FF - Built very slowly to 4"  
FST - No blow

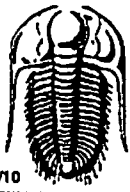
Rec	Feet of	%gas	%oil	%water	%mud
<u>69</u>	<u>SOCMW</u>		<u>5%</u>	<u>50%</u>	<u>45%</u>
<u>10</u>	<u>CO</u>				

Rec Total 79' BHT 110° Gravity 34 API RW .07 @ 60° F Chlorides 115,000 ppm

(A) Initial Hydrostatic 1821  Test 1050 T-On Location 0655  
 (B) First Initial Flow 24  Jars — T-Started 0708  
 (C) First Final Flow 49  Safety Joint — T-Open 0906  
 (D) Initial Shut-In 561  Circ Sub — T-Pulled 1206  
 (E) Second Initial Flow 50  Hourly Standby — T-Out 1344  
 (F) Second Final Flow 67  Mileage 74 RT 55.50  
 (G) Final Shut-In 563  Sampler —  
 (H) Final Hydrostatic 1806  Straddle —

Initial Open 45  Shale Packer —  Ruined Shale Packer —  
 Initial Shut-In 45  Extra Packer —  Ruined Packer —  
 Final Flow 45  Extra Recorder —  Extra Copies —  
 Final Shut-In 45  Day Standby — Sub Total 0  
 Total 1105.50  
 Sub Total 1105.50 MP/DST Disc't —

Approved By \_\_\_\_\_ Our Representative Brannan Lonsdale



# TRILOBITE TESTING INC.

1515 Commerce Parkway • Hays, Kansas 67601

## Test Ticket

NO. 63105

Well Name & No. Cook-Priddy #1-35 Test No. 5 Date 10/25/17  
 Company Downing Nelson Oil Co, Inc Elevation 2367 KB 2359 GL  
 Address PO Box 119 Hays, KS 67601  
 Co. Rep / Geo. Marc Downing Rig Discovery #4  
 Location: Sec. 35 Twp. 11 S Rge. 23 W Co. Trego State KS

Interval Tested 3738-3828 Zone Tested LKC "H-K"  
 Anchor Length 90' Drill Pipe Run 9708 Mud Wt. 9.2  
 Top Packer Depth 3733 Drill Collars Run 32 Vis 48  
 Bottom Packer Depth 3738 Wt. Pipe Run — WL 2.6  
 Total Depth 3828 Chlorides 3,000 ppm System LCM 2<sup>nd</sup>

Blow Description IF - Built very slowly to 3"  
ISI - No blow  
FF - Built very slowly to 3"  
FSI - No blow

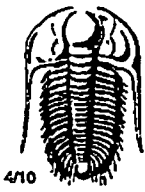
Rec	Feet of	%gas	%oil	%water	%mud
<u>48</u>	<u>OCM</u>		<u>30</u>		<u>70</u>
Rec	Feet of	%gas	%oil	%water	%mud
Rec	Feet of	%gas	%oil	%water	%mud
Rec	Feet of	%gas	%oil	%water	%mud
Rec	Feet of	%gas	%oil	%water	%mud

Rec Total 48' BHT 106° Gravity 34 API RW — @ — °F Chlorides — ppm

(A) Initial Hydrostatic 1863  Test 1050 T-On Location 0030  
 (B) First Initial Flow 27  Jars — T-Started 0041  
 (C) First Final Flow 39  Safety Joint — T-Open 0250  
 (D) Initial Shut-In 826  Circ Sub — T-Pulled 0550  
 (E) Second Initial Flow 41  Hourly Standby — T-Out 0733  
 (F) Second Final Flow 46  Mileage 74 RT 55.50 Comments —  
 (G) Final Shut-In 623  Sampler —  
 (H) Final Hydrostatic 1846  Straddle —

Initial Open 45  Shale Packer —  
 Initial Shut-In 45  Ruined Packer —  
 Final Flow 4.5  Extra Packer —  
 Final Shut-In 45  Extra Recorder —  
 Day Standby — Sub Total 0  
 Accessibility — Total 1105.50  
 Sub Total 1105.50 MP/DST Disc't —

Approved By — Our Representative Brannan Lonsdale



# TRILOBITE TESTING INC.

1515 Commerce Parkway • Hays, Kansas 67601

## Test Ticket

NO. 63106

Well Name & No. Cook-Priddy #1-35 Test No. 6 Date 10/25/17  
 Company Downing Nelson Oil Co, Inc. Elevation 2367 KB 2359 GL  
 Address PO Box 1019 Hays, KS 67601  
 Co. Rep / Geo. Marc Downing Rig Discovery #4  
 Location: Sec. 35 Twp. 11 Rge. 23 WCo. Trego State KS

Interval Tested 3961-4000 Zone Tested Marmaton  
 Anchor Length 39' Drill Pipe Run 3930 Mud Wt. 9.0  
 Top Packer Depth 3956 Drill Collars Run 32 Vis 54  
 Bottom Packer Depth 3961 Wt. Pipe Run \_\_\_\_\_ WL 2.6  
 Total Depth 4000 Chlorides 4000 ppm System LCM 2#

Blow Description IF - 1/2" blow  
ISI - No blow  
PF - No blow  
FSI - No blow

Rec	Feet of	%gas	%oil	%water	%mud
<u>5</u>	<u>OSM</u>				
Rec	Feet of	%gas	%oil	%water	%mud
Rec	Feet of	%gas	%oil	%water	%mud
Rec	Feet of	%gas	%oil	%water	%mud
Rec	Feet of	%gas	%oil	%water	%mud

Rec Total 5' BHT 110° Gravity \_\_\_\_\_ API RW \_\_\_\_\_ @ \_\_\_\_\_ °F Chlorides \_\_\_\_\_ ppm

(A) Initial Hydrostatic <u>1999</u>	<input checked="" type="checkbox"/> Test <u>1050</u>	T-On Location <u>2151</u>
(B) First Initial Flow <u>23</u>	<input type="checkbox"/> Jars _____	T-Started <u>2158</u>
(C) First Final Flow <u>26</u>	<input type="checkbox"/> Safety Joint _____	T-Open <u>2350</u>
(D) Initial Shut-In <u>470</u>	<input type="checkbox"/> Circ Sub _____	T-Pulled <u>10/26</u> <u>0150</u>
(E) Second Initial Flow <u>27</u>	<input type="checkbox"/> Hourly Standby _____	T-Out <u>0318</u>
(F) Second Final Flow <u>29</u>	<input checked="" type="checkbox"/> Mileage <u>74 RT</u> <u>55.50</u>	Comments _____
(G) Final Shut-In <u>109</u>	<input type="checkbox"/> Sampler _____	
(H) Final Hydrostatic <u>1977</u>	<input type="checkbox"/> Straddle _____	
	<input type="checkbox"/> Shale Packer _____	<input type="checkbox"/> Ruined Shale Packer _____
	<input type="checkbox"/> Extra Packer _____	<input type="checkbox"/> Ruined Packer _____
	<input type="checkbox"/> Extra Recorder _____	<input type="checkbox"/> Extra Copies _____
	<input type="checkbox"/> Day Standby _____	Sub Total <u>0</u>
	<input type="checkbox"/> Accessibility _____	Total <u>1105.50</u>
	Sub Total <u>1105.50</u>	MP/DST Disc't _____

Approved By \_\_\_\_\_

Our Representative

Brannan Lonsdale