

Marc A. Downing
Consulting Petroleum Geologist

Geologic Report
Drilling Time and Sample Log

Operator **Downing-Nelson Oil Co., Inc.**
 Lease **Cook-Priddy** No. **1-35**
 API # **15-195-23030-0000**
 Field **Wildcat**
 Location **490' FNL & 330' FEL**
 Sec. **35** Twp. **11s** Rge. **23w**
 County **Trego** State **Kansas**

Elevation
 KB **2362**
 DF **2360**
 GL **2354**

Casing Record
 Surface **8 5/8" @ 222'**
 Production **None**

Electrical Surveys
CNDL, DIL, MEL, Sonic

Formation	Sample tops	Log Tops	Datum	Struct Comp
Top Anhydrite	1802	1801	+561	-12
Base Anhydrite	1855	1842	+520	NA
Topeka	3362	3362	-1000	-6
Heebner	3582	3582	-1220	-5
Toronto	3605	3603	-1241	NA
LKC	3618	3618	-1256	-4
BKC	3847	3848	-1486	NA
Marmaton	3954	3954	-1592	-8
Cherokee Sh	3997	3997	-1635	NA
Conglomerate	4055	4055	-1693	NA
Total Depth	4074	4075	-1713	

Discovery Drilling, Rig #4	Completed	8-20-17
Commenced	10-18-17	
Samples Saved From	3350	To RTD
Drilling Time Kept From	3250	To RTD
Samples Examined From	3350	To RTD
Geological Supervision From	3350	To RTD

Summary and Recommendations
Due to structural position, DST recovery, and log evaluation, it was decided to plug and abandon the well.

Respectfully Submitted,
 Marc A. Downing

ROCK TYPES
 Carbon Sh
 Lmst (w/ shale, gry

ACCESSORIES
 Chl vari
 Dolpfrm

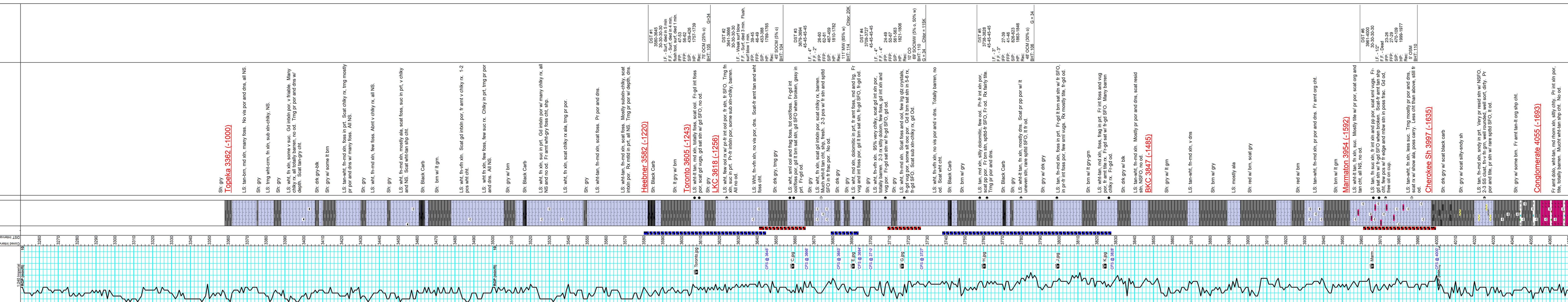
MINERAL
 Chert, dark
 Chert, White

STRINGER
 Dolomite
 Sandstone
 Shale
 Carb shale

OIL SHOWS
 Even Stn
 Spotted Stn 50-75 %
 Spotted Stn 25-50 %
 Spotted Stn 1-25 %
 Questionable Stn
 Dead Oil Stn
 Fluorescence

MISC
 Daily Report
 Digital Photo
 Document
 Folder
 Link
 Vertical Log File
 Horizontal Log File
 Core Log File
 Drill Cuttings Rpt

OTHER SYMBOLS
 DST
 DST int
 DST alt
 Casing
 Tail pipe



Printed by GEOstrip VC Striplog version 4.0.8.15 (www.gstripc.ca)

Oil Shows

Lithology

DST

Curve Track #1

ROP (min/hr)

Depth (ft)

ROP (min/hr)

ROP (min/hr)

ROP (min/hr)

ROP (min/hr)

ROP (min/hr)

ROP (min/hr)

ROP (min/hr)

ROP (min/hr)

ROP (min/hr)

ROP (min/hr)

ROP (min/hr)

ROP (min/hr)

ROP (min/hr)

ROP (min/hr)

ROP (min/hr)

ROP (min/hr)

ROP (min/hr)

ROP (min/hr)

ROP (min/hr)

ROP (min/hr)

ROP (min/hr)

ROP (min/hr)

ROP (min/hr)

ROP (min/hr)

ROP (min/hr)

ROP (min/hr)

ROP (min/hr)

ROP (min/hr)

ROP (min/hr)

ROP (min/hr)

ROP (min/hr)

ROP (min/hr)

ROP (min/hr)

ROP (min/hr)

ROP (min/hr)

ROP (min/hr)

ROP (min/hr)

ROP (min/hr)

ROP (min/hr)

ROP (min/hr)

ROP (min/hr)

ROP (min/hr)

ROP (min/hr)

ROP (min/hr)

ROP (min/hr)

ROP (min/hr)

ROP (min/hr)

ROP (min/hr)

ROP (min/hr)

ROP (min/hr)

ROP (min/hr)

ROP (min/hr)

ROP (min/hr)

ROP (min/hr)

ROP (min/hr)

ROP (min/hr)

ROP (min/hr)

ROP (min/hr)

ROP (min/hr)

ROP (min/hr)

ROP (min/hr)

ROP (min/hr)

ROP (min/hr)