

<b>Marc A. Downing</b>		<b>Geologic Report</b>	
Consulting Petroleum Geologist		Drilling Time and Sample Log	
Operator	<b>Downing-Nelson Oil Co., Inc.</b>	Elevation	KB 2030
Lease	<b>Dechant Trust</b>	DF	2028
API #	<b>15-051-26896-0000</b>	GL	2022
Field	<b>Dechant</b>	Casing Record	Surface 8 5/8" @ 600'
Location	<b>1712' FSL &amp; 1571' FEL</b>	Production	5 1/2" @ 3722'
Sec.	<b>6</b>	Twp.	<b>15s</b>
County	<b>Ellis</b>	Rge.	<b>18w</b>
Formation	<b>Sample tops</b>	<b>CNDL, DIL MEL, Sonic</b>	
Top Anhydrite	1223	Datum	+408
Base Anhydrite	1261	Struct Comp	-11
Topok	3006		+772
Headbr	3006		-974
Toronto	3245		-1233
LKC	3287		-1253
BKC	3310		-1277
Arbuckle	3553		-1519
	3630		-1586
Total Depth	3725		-1693
Reference Well For Structural Comparison	D. G. Hanson		
Dechant #1	SW NW SE Sec 6-15s-18w		

Drilling Contractor	<b>Discovery Drilling, Rig #4</b>
Completed	<b>10-30-17</b>
Drilling Time Kept From	To
Samples Examined From	To
Geological Supervision From	To
	<b>RTD</b>
	<b>RTD</b>
	<b>RTD</b>
	<b>RTD</b>

**Summary and Recommendations**

Due to structural position, DST recovery, and log evaluation, it was decided to set 5 1/2" production casing for completion in the Arbuckle.

Respectfully Submitted,  
Marc A. Downing

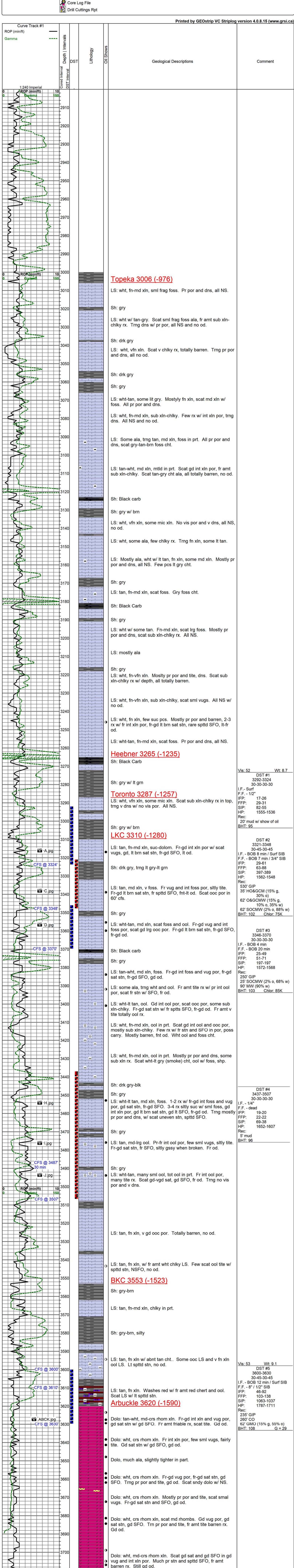
<b>ROCK TYPES</b>	shale, red
	shale, gry
	Carbon Sh
	Dolprim
	Lmst fw7>

<b>ACCESSORIES</b>	Stringer
	Limestone
	Sandstone
<b>MINERAL</b>	Chert, dark
	Chert White
<b>FOSSIL</b>	Oolite

<b>OTHER SYMBOLS</b>	DST
	DST int
	DST alt
	Core
	tail pipe

<b>OIL SHOWS</b>	MISC
Even Stn	Daily Report
Spotted Stn 50 - 75 %	Digital Photo
Spotted Stn 25 - 50 %	Document
Spotted Stn 1 - 25 %	Folder
Questionable Stn	Link
Dead Oil Stn	Vertical Log File
Fluorescence	Horizontal Log File
	Core Log File
	Drill Cuttings Rpt

<b>Printed by GEOstrip VC Striplog version 4.0.8.15 (www.grsi.ca)</b>
---



<b>Vis: 52</b>	<b>Wt: 8.7</b>
DST #1	3292-3324
	30-30-30-30
I.F. - Surf	
F.F. - 1/2"	
IFP:	17-26
FFP:	28-31
SIP:	82-55
HP:	1555-1536
Rec:	20' mud w/ show of oil
BHT:	95

<b>Vis: 53</b>	<b>Wt: 9.1</b>
DST #2	3321-3348
	30-45-30-45
I.F. - BOB 8 min / Surf SIB	
F.F. - BOB 7 min / 3/4" SIB	
IFP:	29-61
FFP:	63-88
SIP:	397-389
HP:	1562-1548
Rec:	530' GIP
	35' HO&GCM (15% g, 30% o)
	62' O&GCMW (15% g, 10% o, 35% w)
	62' SOCMW (2% o, 88% w)
BHT:	102 Chlor: 75K

<b>Vis: 53</b>	<b>Wt: 9.1</b>
DST #3	3346-3370
	30-30-30-30
I.F. - BOB 4 min	
F.F. - BOB 20 min	
IFP:	25-49
FFP:	51-71
SIP:	197-197
HP:	1572-1568
Rec:	250' GIP
	25' SOCMW (2% o, 68% w)
	90' MW (90% w)
BHT:	103 Chlor: 85K

<b>Vis: 53</b>	<b>Wt: 9.1</b>
DST #4	3437-3507
	30-30-30-30
I.F. - 1/4"	
F.F. - dead	
IFP:	19-20
FFP:	22-22
SIP:	69-38
HP:	1652-1607
Rec:	5' mud
BHT:	96

<b>Vis: 53</b>	<b>Wt: 9.1</b>
DST #5	3600-3630
	30-45-30-45
I.F. - BOB 12 min / Surf SIB	
F.F. - 8' / 1/2" SIB	
IFP:	46-92
FFP:	103-138
SIP:	1063-1037
HP:	1787-1711
Rec:	235' GIP
	260' CO
	62' GCM (15% g, 55% o)
BHT:	108 G = 29