

Max R. Lovely

GEOLOGIST'S REPORT

DRILLING TIME AND SAMPLE LOG

COMPANY: Fitchell Exploration

WELL #1 Seymour-Morrill

FIELD: Eddy Northwest

LOCATION: 2570 N. 1805th St

SEC: 2 T18S R18W

COUNTY: Pawnee State KS

CONTRACTOR: Sterling Rig #4

RID: 9-5-17 COMP 9-14-17

SPD: 4386' LTD 4385'

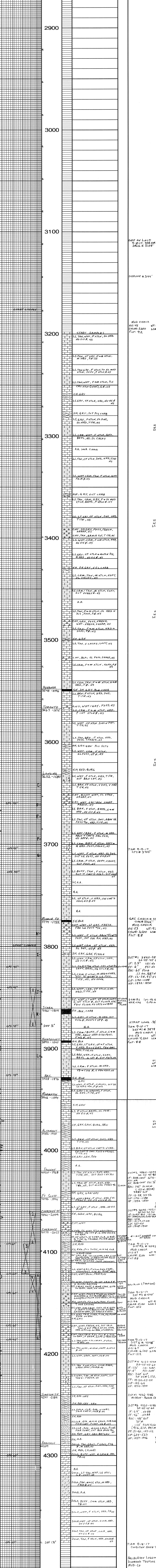
MUD: UP 3144' TYPE MUD Chem

| ELEVATIONS | |
|--------------|--------------|
| KB 2052 | DF 2041 |
| MEASUREMENTS | MEASUREMENTS |
| KB 2052 | DF 2041 |
| MEASUREMENTS | MEASUREMENTS |
| KB 2052 | DF 2041 |
| MEASUREMENTS | MEASUREMENTS |

| FORMATION TOPS AND STRUCTURAL POSITION | | | | | |
|--|----------------|---------|---------------------|------|------|
| FORMATION | SAMPLE LOG TOP | SUB-SEA | STRUCTURAL POSITION | | |
| ANhydrite | 930 | 1122 | 929 | 940 | 944 |
| B&H | 935 | 1147 | 905 | 912 | 918 |
| Heabur | 1486 | 3548 | 1482 | 1478 | 1480 |
| Wilsn | 1722 | 3778 | 1722 | 1722 | 1722 |
| BKC | 1876 | 3924 | 1872 | 1855 | 1888 |
| Marmaton | 1894 | 4046 | 1874 | 1874 | 1875 |
| Pawnee | 1988 | 4016 | 1984 | 1982 | 1985 |
| Ft. Scott | 1994 | 4045 | 1991 | 1987 | 1984 |
| Cherokee SH | 2009 | 4055 | 2004 | 1991 | 2000 |
| Comptonaire SD | 2057 | 4080 | 2005 | 2005 | 2010 |
| Ardubake | 2253 | 4289 | 2202 | 2202 | 2243 |

| REFERENCE WELLS FOR STRUCTURE | |
|-------------------------------|-------------------------------|
| A Fitchell #3 Boasler 836 | FSL 1833 FWL 2-22-18W |
| B Fitchell #1 Compad 348 | FSL 2242 FNL 598 FTL 9-22-18W |
| C Fitchell #1 Boasler 1133 | FSL 530 FWL 2-22-18W |

| LEGEND | |
|--------|-----------|
| | Anhydrite |
| | Salt |
| | Sandstone |
| | Shale |
| | Corb sh |
| | Limestone |
| | Ool.Lime |
| | Chert |
| | Dolomite |



REMARKS: HALIBURTON LOGGING DIAMOND TESTING MUD-LOG