

JUSTIN D. CARTER

CONSULTING GEOLOGIST

Scale 1:240 (5"=100') Imperial
Measured Depth Log

Well Name: STUTZMAN #1
Well Id:
Location: NW, NW, SW, NE Sec. 15 - 24S - 2W Harvey Co., KS
License Number: 15-079-20715-0000
Spud Date: 10/23/17
Surface Coordinates: 1381' FNL & 2350' FEL
Region: Kisiwa
Drilling Completed: 10/30/17

Bottom Hole Coordinates: 270': 1/4 DEG, 3779': 1 1/4 DEG, 4000': 3/4 DEG
Ground Elevation (ft): 1402' K.B. Elevation (ft): 1410'
Logged Interval (ft): 2500' To: 4000' Total Depth (ft): 4000'
Formation: HUNTON, VIOLA
Type of Drilling Fluid: Chemical Mud

Printed by WellSight Log Viewer from WellSight Systems 1-800-447-1534 www.WellSight.com

OPERATOR

Company: M & M EXPLORATION, INC.
Address: 4257 Main St., Suite 230
Westminister, CO 80031
Co. Geo.: Mr. Mike Austin

GEOLOGIST

Name: Justin D. Carter
Company: Consulting Geologist
Address: 1640 N. Roosevelt Ave.
Liberal, KS 67901
Phone: 620-655-1187

Comments

Drilling Contractor: Discovery Drilling Rig #2
Tool Pusher: Terry Wickham

8 5/8" surface casing set at 266'

Mud: Turbo Drilling Fluids
Engineer: Dave Leahy

DSTs: Trilobite Testing
Tester: Jimmy Ricketts Jr.


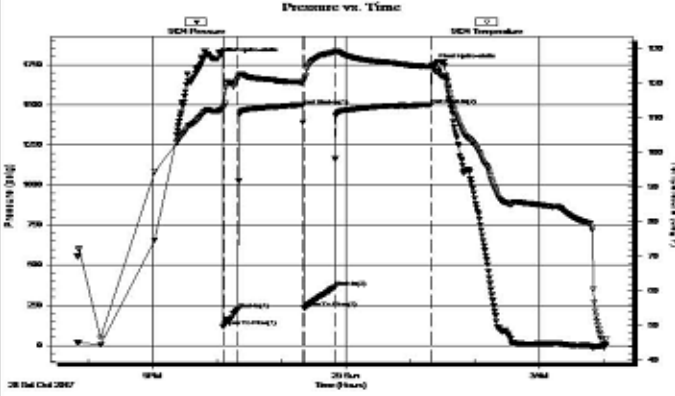
Open-Hole Loggers: Weatherford Wireline

Remarks

After careful review of the sample log, electric logs, and DST reports, the decision was made to P&A the Stutzman #1.

Respectfully submitted,

Justin D. Carter
Consulting Geologist

	DRILL STEM TEST REPORT																																										
M&M Exploration 4257 Main st #230 Westminster CO, 80031 ATTN: Mike Austin	15w/24s/2 Harvey KS Stutzman #1 Job Ticket: 62010 DST#: 1 Test Start: 2017.10.28 @ 19:50:00																																										
GENERAL INFORMATION:																																											
Formation: Hunton Deviated: No Whipstock: ft (KB) Time Tool Opened: 21:57:20 Time Test Ended: 04:01:50	Test Type: Conventional Bottom Hole (Initial) Tester: Jason Cash/Jimmy Ric Unit No: #80																																										
Interval: 3748.00 ft (KB) To 3779.00 ft (KB) (TVD) Total Depth: 3779.00 ft (KB) (TVD) Hole Diameter: 7.88 inches Hole Condition: Poor	Reference Elevations: 1410.00 ft (KB) 1402.00 ft (CF) KB to GR/CF: 8.00 ft																																										
Serial #: 9124 Inside Press@RunDepth: 361.90 psig @ 3749.00 ft (KB) Start Date: 2017.10.28 End Date: 2017.10.29 Start Time: 19:50:05 End Time: 04:01:50	Capacity: 8000.00 psig Last Calib.: 1899.12.30 Time On Btm: 2017.10.28 @ 21:57:20 Time Off Btm: 2017.10.29 @ 01:20:20																																										
TEST COMMENT: IF -Weak Blow Building to strong blow 7 minutes into initial flow period. FF -Weak Blow Building to strong blow 7 minutes into final flow period. FS-1 1/2 inch blow back during final shut-in period.																																											
	PRESSURE SUMMARY																																										
	<table border="1" style="width:100%; border-collapse: collapse;"> <thead> <tr> <th>Time (Min.)</th> <th>Pressure (psig)</th> <th>Temp (deg F)</th> <th>Annotation</th> </tr> </thead> <tbody> <tr><td>0</td><td>1787.41</td><td>111.95</td><td>Initial Hydro-static</td></tr> <tr><td>9</td><td>116.86</td><td>112.98</td><td>Open To Flow (1)</td></tr> <tr><td>23</td><td>223.18</td><td>121.56</td><td>Shut-In(1)</td></tr> <tr><td>83</td><td>1497.25</td><td>120.30</td><td>End Shut-In(1)</td></tr> <tr><td>84</td><td>233.41</td><td>120.86</td><td>Open To Flow (2)</td></tr> <tr><td>113</td><td>361.90</td><td>128.92</td><td>Shut-In(2)</td></tr> <tr><td>202</td><td>1500.08</td><td>124.80</td><td>End Shut-In(2)</td></tr> <tr><td>203</td><td>1749.97</td><td>124.76</td><td>Final Hydro-static</td></tr> </tbody> </table>	Time (Min.)	Pressure (psig)	Temp (deg F)	Annotation	0	1787.41	111.95	Initial Hydro-static	9	116.86	112.98	Open To Flow (1)	23	223.18	121.56	Shut-In(1)	83	1497.25	120.30	End Shut-In(1)	84	233.41	120.86	Open To Flow (2)	113	361.90	128.92	Shut-In(2)	202	1500.08	124.80	End Shut-In(2)	203	1749.97	124.76	Final Hydro-static						
Time (Min.)	Pressure (psig)	Temp (deg F)	Annotation																																								
0	1787.41	111.95	Initial Hydro-static																																								
9	116.86	112.98	Open To Flow (1)																																								
23	223.18	121.56	Shut-In(1)																																								
83	1497.25	120.30	End Shut-In(1)																																								
84	233.41	120.86	Open To Flow (2)																																								
113	361.90	128.92	Shut-In(2)																																								
202	1500.08	124.80	End Shut-In(2)																																								
203	1749.97	124.76	Final Hydro-static																																								
<table border="1" style="width:100%; border-collapse: collapse;"> <thead> <tr> <th colspan="3">Recovery</th> </tr> <tr> <th>Length (ft)</th> <th>Description</th> <th>Volume (bbl)</th> </tr> </thead> <tbody> <tr><td>325.00</td><td>Mud cut w ater 93%W &7%M</td><td>2.92</td></tr> <tr><td>120.00</td><td>Heavy mud cut w ater 60%W&40%M</td><td>1.68</td></tr> <tr><td>120.00</td><td>Heavy water cut mud 30%W&70%M</td><td>1.68</td></tr> <tr><td>90.00</td><td>Drilling mud 100%M</td><td>1.26</td></tr> <tr><td> </td><td> </td><td> </td></tr> <tr><td> </td><td> </td><td> </td></tr> </tbody> </table>	Recovery			Length (ft)	Description	Volume (bbl)	325.00	Mud cut w ater 93%W &7%M	2.92	120.00	Heavy mud cut w ater 60%W&40%M	1.68	120.00	Heavy water cut mud 30%W&70%M	1.68	90.00	Drilling mud 100%M	1.26							<table border="1" style="width:100%; border-collapse: collapse;"> <thead> <tr> <th colspan="4">Gas Rates</th> </tr> <tr> <th> </th> <th>Choke (inches)</th> <th>Pressure (psig)</th> <th>Gas Rate (Mcf/d)</th> </tr> </thead> <tbody> <tr><td> </td><td> </td><td> </td><td> </td></tr> <tr><td> </td><td> </td><td> </td><td> </td></tr> </tbody> </table>			Gas Rates					Choke (inches)	Pressure (psig)	Gas Rate (Mcf/d)								
Recovery																																											
Length (ft)	Description	Volume (bbl)																																									
325.00	Mud cut w ater 93%W &7%M	2.92																																									
120.00	Heavy mud cut w ater 60%W&40%M	1.68																																									
120.00	Heavy water cut mud 30%W&70%M	1.68																																									
90.00	Drilling mud 100%M	1.26																																									
Gas Rates																																											
	Choke (inches)	Pressure (psig)	Gas Rate (Mcf/d)																																								



TRILOBITE TESTING, INC.

DRILL STEM TEST REPORT

M&M Exploration
 4257 Main st #230
 Westminster CO, 80031
 ATTN: Mike Austin

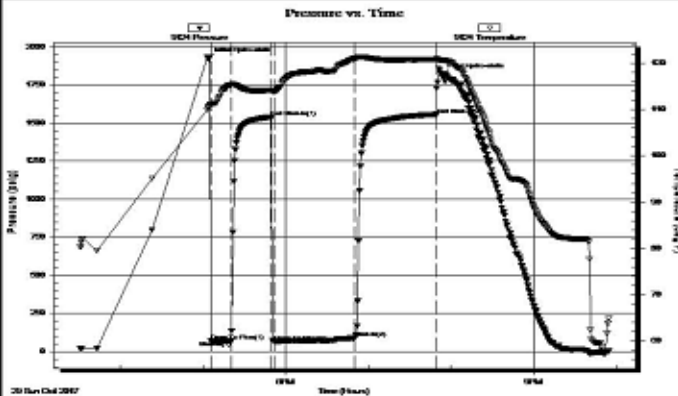
15w/24s/2 Harvey KS
Stutzman #1
 Job Ticket: 62011 **DST#: 2**
 Test Start: 2017.10.29 @ 15:31:00

GENERAL INFORMATION:

Formation: **Viola**
 Deviated: No Whipstock: ft (KB)
 Test Type: Conventional Bottom Hole (Initial)
 Time Tool Opened: 17:05:40
 Tester: Jason Cash
 Time Test Ended: 21:54:39
 Unit No: 80
 Interval: **3862.00 ft (KB) To 3876.00 ft (KB) (TVD)**
 Reference Elevations: 1410.00 ft (KB)
 Total Depth: 3876.00 ft (KB) (TVD)
 1402.00 ft (CF)
 Hole Diameter: 7.88 inches
 Hole Condition: Poor
 KB to GR/CF: 8.00 ft

Serial #: 9124 Inside
 Press@RunDepth: 89.39 psig @ 3863.00 ft (KB) Capacity: 8000.00 psig
 Start Date: 2017.10.29 End Date: 2017.10.29 Last Calib.: 1899.12.30
 Start Time: 15:31:05 End Time: 21:54:39 Time On Btm: 2017.10.29 @ 17:04:00
 Time Off Btm: 2017.10.29 @ 19:52:39

TEST COMMENT: IF-Weak blow building to 1 inch during initial flow period.
 FF-Weak blow building to 2 inches during final flow period.



PRESSURE SUMMARY

Time (Min.)	Pressure (psig)	Temp (deg F)	Annotation
0	1921.00	110.45	Initial Hydro-static
2	69.60	110.95	Open To Flow (1)
17	69.53	115.27	Shut-In(1)
46	1541.50	114.20	End Shut-In(1)
48	65.35	113.87	Open To Flow (2)
106	89.39	121.04	Shut-In(2)
166	1556.91	120.83	End Shut-In(2)
169	1818.71	120.66	Final Hydro-static

Recovery

Length (ft)	Description	Volume (bbl)
70.00	Heavy water cut mud 29%W & 71%M	0.52

Gas Rates

Choke (inches)	Pressure (psig)	Gas Rate (Mcf/d)

Trilobite Testing, Inc

Ref. No: 62011

Printed: 2017.10.30 @ 10:28:12

ROCK TYPES

- Anhy
- Bent
- Brec
- Cht
- Clyst
- Coal
- Congl
- Dol

- Gyp
- Igne
- Lmst
- Meta
- Mrlst
- Salt
- Shale
- Shcol

- Shgy
- Slstst
- Ss
- Till
- Carb sh
- Dol
- Dtd
- Gry sh

- Sandy lms
- Shale
- Slststn
- Shlyslts
- Sltys h
- Lms

ACCESSORIES

FOSSIL

- Algae
- Amph
- Belm
- Bioclst
- Brach
- Bryozoa
- Cephal
- Coral
- Crin
- Echin
- Fish
- Foram
- Fossil
- Gastro
- Oolite
- Ostra
- Pelec
- Pellet
- Pisolite
- Plant
- Strom
- Fuss
- Oomold

MINERAL

- Anhy
- Arggrn
- Arg
- Bent
- Bit
- Breclfrag
- Calc
- Carb
- Chtdk
- Chtlt
- Dol
- Feldspar
- Ferrpel
- Ferr
- Glau
- Gyp
- Hvymin
- Kaol
- Marl
- Minxl
- Nodule
- Phos
- Pyr

- Salt
- Sandy
- Silt
- Sil
- Sulphur
- Tuff
- Chlorite
- Dol
- Sand
- Sltly

STRINGER

- Anhy
- Arg
- Bent
- Coal
- Dol
- Gyp
- Ls
- Mrst
- Sltstrg
- Ssstrg
- Carbsh
- Clystn

- Dol
- Grysh
- Gryslt
- Lms
- Sandylms
- Sh
- Sltstn

TEXTURE

- Boundst
- Chalky
- Cryxln
- Earthy
- Finexln
- Grainst
- Lithogr
- Microxln
- Mudst
- Packst
- Wackest

OTHER SYMBOLS

INTERVALS

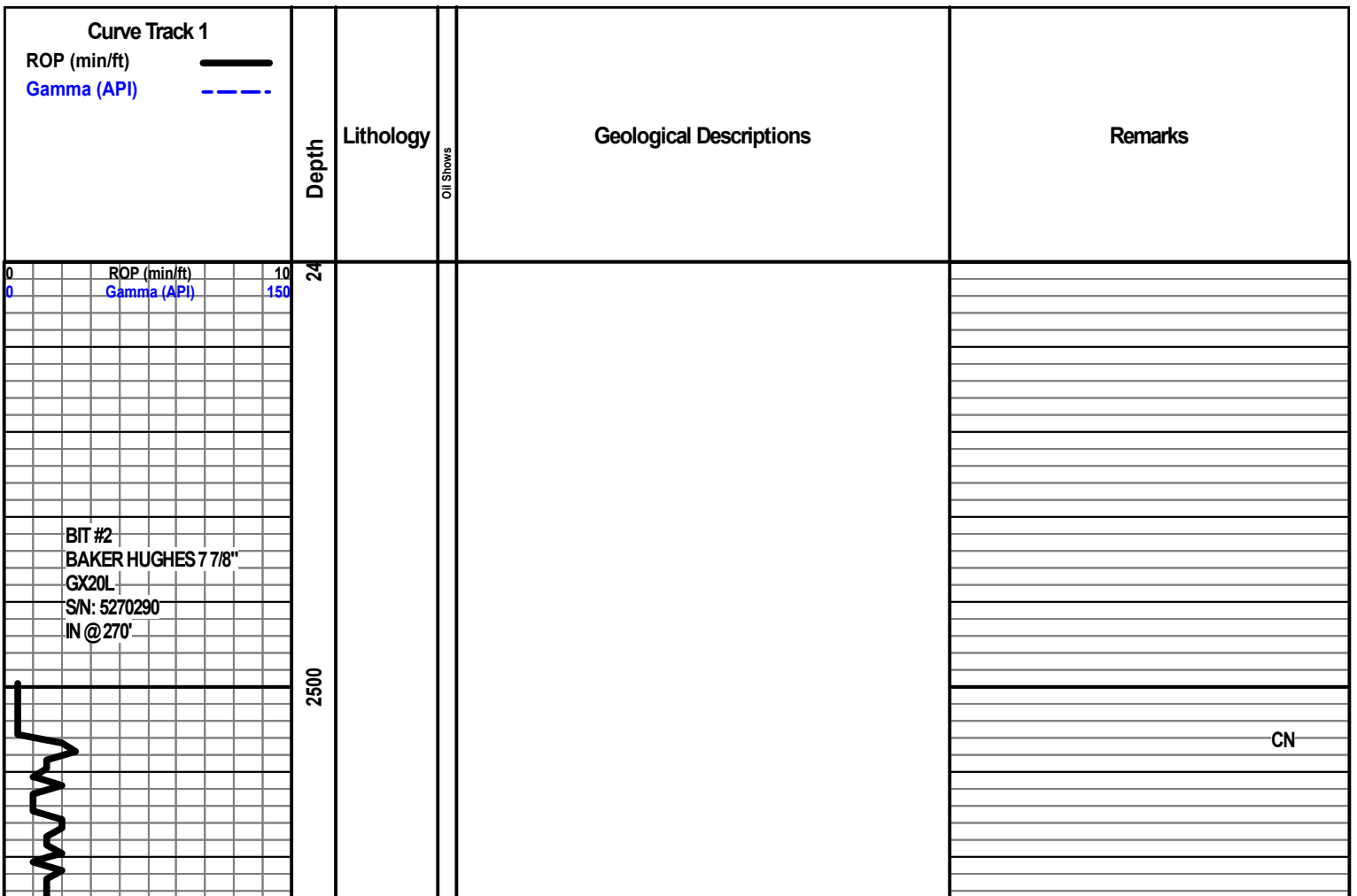
- Core
- Dst

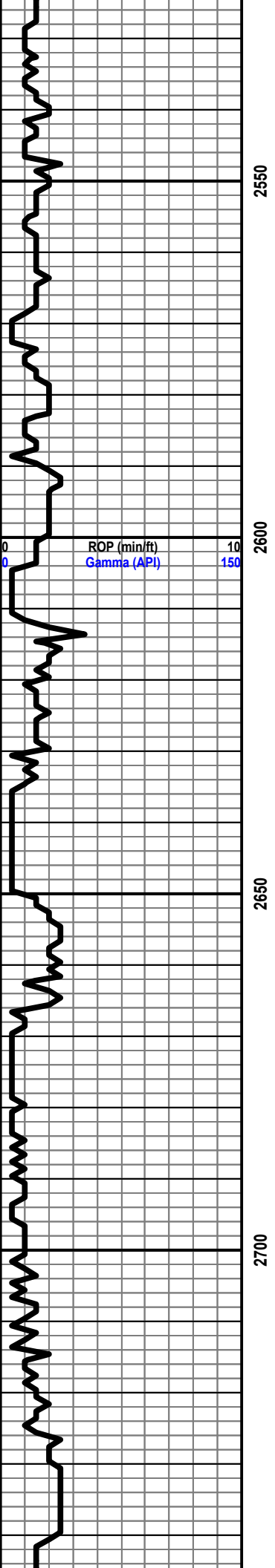
- Dst

OIL SHOWS

- Even
- Spotted

- Ques
- Dead
- Gas show

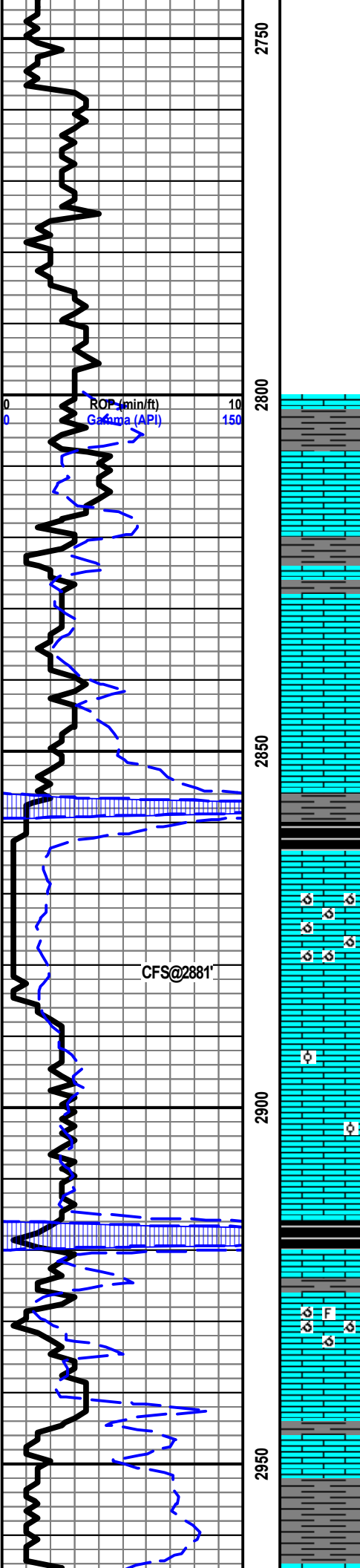




GEOLOGIST ON LOCATION 1:15 P.M. 10/26/17

DISPLACE HOLE @ 2662'

MUD CHECK @ 2740'
WT 8.7



START SAMPLES @ 2800'

LS- BFF OFF WHT, HRD DNS, VF/CRYPTO-XLN, RE-XLN MTRX IP TO TR SUB-CHLKY, NO FLO, NO VIS POR

LS- CRM, HRD DNS, VF-XLN, TR RE-XLN MTRX TO SUB-SUCRO MTRX THRU, TR SFT WHT CHLK, NO FLO, NO VIS POR

LS- LT GY, HRD DNS, VF/CRYPTO-XLN, RE-XLN MTRX SCAT THRU, NO FLO, NO VIS POR

SH- BLK, FRM, CARB, BLKY, DISS PYR THRU

LS- CRM TN, BRITT, MD/F-XLN, SUCRO MTRX THRU, OOMLD THRU, TR OOL, V/DLL YEL FLO SCAT THRU, NO VIS CUT, FR/GD OOMLD POR THRU, NO ODOR, NS

LS- LT CRM BFF, HRD DNS, VF/CRYPTO-XLN, RE-XLN MTRX IP, TR OOL, NO FLO, NO VIS POR

SH- BLK, FRM, BLKY, CARB

LS- LT CRM, BRITT, F/VF-XLN, SUCRO MTRX THRU, OOMLD THRU, TR IMBED OOL, NO FLO, NO VIS CUT, FR OOMLD POR THRU, NS

SH- GY, FRM TO SFT IP, BLKY, CALC

VIS 50
LCM TR
PV 20
YP 10
PH 10.5 CN
FIL 6.0
CAL 40
CHL 2,700

CN

REPAIR BROKEN ROTARY CHAIN

CN

WT 8.7
VIS 64
LCM TR

RPM 80
WOB 30K
SPM 60
PP 800

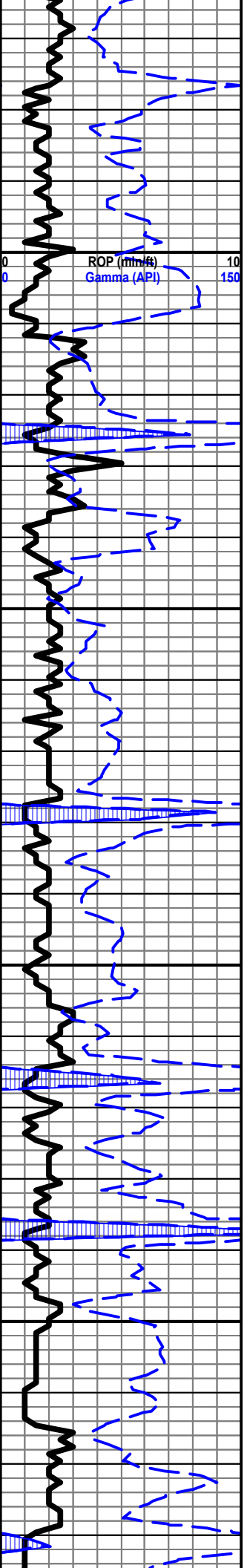
CN

12:00 A.M. 10/27/17

CN

CN

CN



LS- BRN, HRD DNS, CRYPTO-XLN, TR RE-XLN MTRX, NO FLO, NO VIS POR

CN

LS- VLT CRM, HRD DNS, CRYPTO-XLN, TR RE-XLN MTRX, IMBED LT GRN SH IP, NO FLO, NO VIS POR

SH- PRPLE LT GRN, FRM TO SFT IP, CALC IP TO SLTY IP, BLKY

CN

LS- LT CRM LT GY, HRD DNS, VF-XLN, RE-XLN MTRX IP, SLI SNDY LS IP, NO FLO, NO VIS POR

KANSAS CITY 3028' (-1618')

LS- CRM, HRD DNS, VF-XLN, RE-XLN MTRX IP, IMBED OOL & OTHER FOSS FRAGS THRU, NO FLO, POSS FRAC POR TO NO VIS POR THRU, NS

CN

LS- BFF, HRD DNS, VF-XLN, RE-XLN MTRX IP TO SUB-SUCRO MTRX IP, TR IMBED OOL, NO FLO, TR FRAC POR TO NO VIS POR THRU, NS

LS- BFF, HRD DNS, CRYPTO-XLN, RE-XLN MTRX IP, NO FLO, NO VIS POR

MUD CHECK @3061'

WT 8.8

VIS 57

LCM TR

PV 18

YP 10

PH 10.5

FIL 8.0

CAL 40

CHL 2,000

CN

LS- CRM TN, HRD, F/VF-XLN, SUCRO TO SUB-SUCRO MTRX THRU TO TR RE-XLN MTRX, IMBED OOL SCAT THRU, TR FINE CALC XLS, NO FLO, TR INTER-OOL POR TO NO VIS POR THRU, NS

CN

LS- TN LT GY CRM, HRD DNS, VF-XLN, RE-XLN MTRX THRU, NO FLO, NO VIS POR

LS- BFF, HRD DNS, VF-XLN, RE-XLN MTRX IP, LT GRN SLTST IP, NO VIS POR

CN

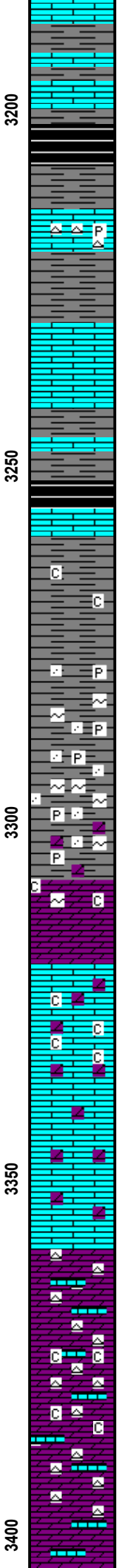
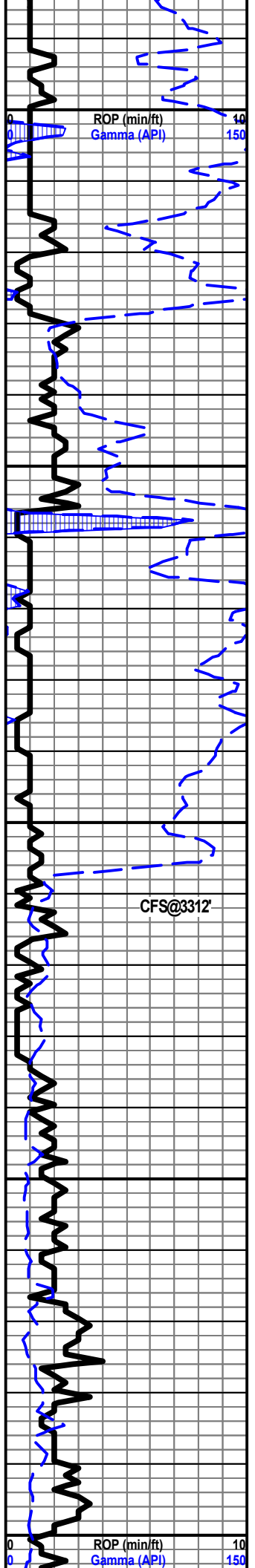
SH- GY GRN BLK, FRM, BLKY, SLTY TO TR CARB SH, TR ARG

LS- LT TN, HRD DNS, VF-XLN, RE-XLN MTRX THRU, TR SFT WHT CHLK, NO FLO, NO VIS POR

LS- CRM TN, MOTT, MD/VF-XLN, RE-XLN MTRX THRU, FRAC IP, TR IMBED OOL, NO FLO, FRAC POR TO TR INTER-XLN POR, NS

CN

LS- BFF LT CRM, HRD DNS, VF/CRYPTO-XLN, RE-XLN MTRX IP, TR IMBED SH, NO FLO, NO VIS POR



LS- VLT GY, HRD DNS, CRYPTO-XLN, TR RE-XLN MTRX, SLI
SNDY, NO VIS POR

CN

SH- GRN GY BLK, FRM, BLK CARB SH, TR IMBED FOSS
FRAGS,

LS- LT CRM, HRD DNS, VF/CRYPTO-XLN, RE-XLN MTRX IP TO
TR SUB-SUCRO MTRX, WHT CHRT W/ DISS PYR IP, NO FLO, NO
VIS POR

CN

LS- LT CRM, HRD DNS, VF-XLN, RE-XLN MTRX THRU, NO FLO,
NO VIS POR

CHEROKEE SH 3252' (-1842')

CN

SH- GRN GY, SFT TO FRM IP, SLTY IP, ARG IP, BLKY, SFT WHT
CHLK IP

SH- GRY GRN RD, FRM, BLKY, CONGL, CALC, F-GRN SS IP,
GLAUC SCAT THRU, PYR IP,

CN

SH- GRY GRN RD, A/A

MISSISSIPPIAN 3308' (-1898')

DOLO- LT CRM BFF, HRD DNS, MD/F-XLN, SUCRO MTRX THRU,
IMBED GLAUC IP, TR SFT WHT CHLK, DLL YEL MIN FLO THRU,
NO VIS CUT, PR INTER-XLN POR IP TO MICRO PPPOR IP, NS

CN

LS- CRM LT TN, BRITT, CORSE/F-XLN, GRST, SFT WHT CHLK IP,
DOLO XLS IP, FR/GD INTER-XLN POR THRU, NS

LS- LT GY CRM, HRD TO BRITT IP, CORSE/F-XLN, GRST, SFT
WHT CHLK IP, DOLO XLS IP, IMBED GYSH IP, NO FLO, FR
INTER-XLN POR THRU, NS

CN

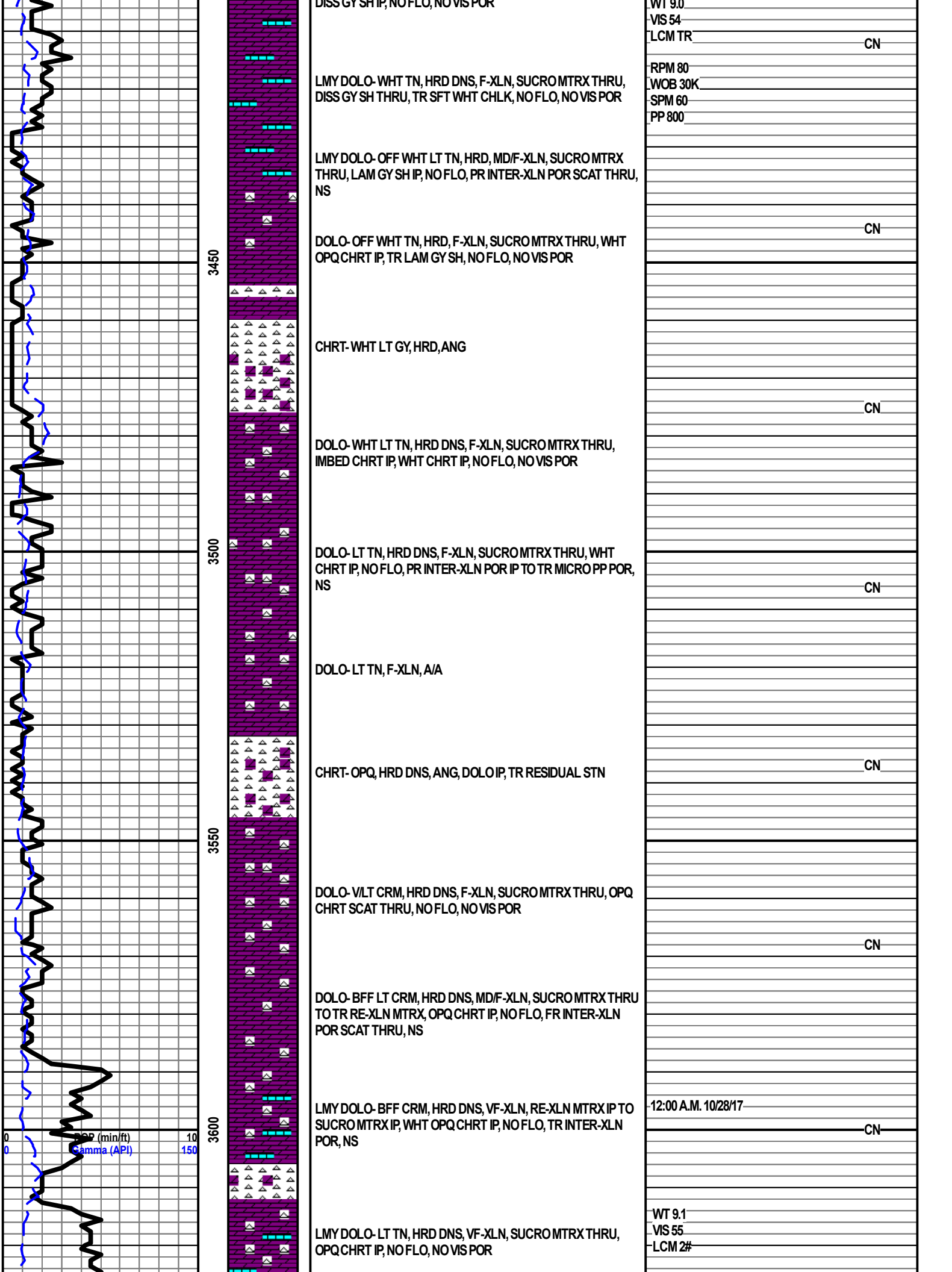
LMY DOLO- LT TN, HRD DNS, VF-XLN, SUCRO MTRX THRU,
OPQ CHRT THRU, NO FLO, NO VIS POR

LMY DOLO- CRM LT TN, HRD DNS, F/VF-XLN, SUCRO MTRX
THRU, OPQ WHT CHRT THRU, SFT WHT CHLK IP, NO FLO,
V/POR INTER-XLN POR SCAT THRU, NS

CN

LMY DOLO- TN LT CRM, HRD, F/VF-XLN, SUCRO MTRX THRU,
DISC CYGUR NO FLO, NO VIS POR

CN



OP (min/ft) 10
Gamma (API) 150

3450
3500
3550
3600

DISS GY SH IP, NO FLO, NO VIS POR

LMY DOLO- WHT TN, HRD DNS, F-XLN, SUCRO MTRX THRU, DISS GY SH THRU, TR SFT WHT CHLK, NO FLO, NO VIS POR

LMY DOLO- OFF WHT LT TN, HRD, MD/F-XLN, SUCRO MTRX THRU, LAM GY SH IP, NO FLO, PR INTER-XLN POR SCAT THRU, NS

DOLO- OFF WHT TN, HRD, F-XLN, SUCRO MTRX THRU, WHT OPQ CHRT IP, TR LAM GY SH, NO FLO, NO VIS POR

CHRT- WHT LT GY, HRD, ANG

DOLO- WHT LT TN, HRD DNS, F-XLN, SUCRO MTRX THRU, IMBED CHRT IP, WHT CHRT IP, NO FLO, NO VIS POR

DOLO- LT TN, HRD DNS, F-XLN, SUCRO MTRX THRU, WHT CHRT IP, NO FLO, PR INTER-XLN POR IP TO TR MICRO PP POR, NS

DOLO- LT TN, F-XLN, A/A

CHRT- OPQ, HRD DNS, ANG, DOLO IP, TR RESIDUAL STN

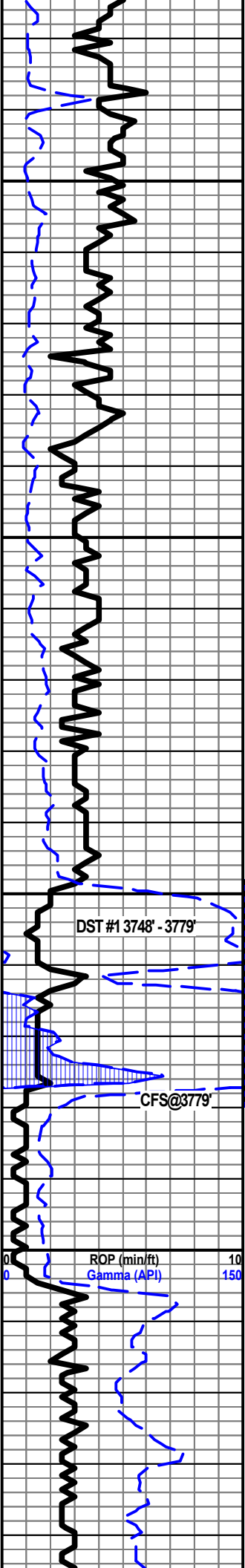
DOLO- VLT CRM, HRD DNS, F-XLN, SUCRO MTRX THRU, OPQ CHRT SCAT THRU, NO FLO, NO VIS POR

DOLO- BFF LT CRM, HRD DNS, MD/F-XLN, SUCRO MTRX THRU TO TR RE-XLN MTRX, OPQ CHRT IP, NO FLO, FR INTER-XLN POR SCAT THRU, NS

LMY DOLO- BFF CRM, HRD DNS, VF-XLN, RE-XLN MTRX IP TO SUCRO MTRX IP, WHT OPQ CHRT IP, NO FLO, TR INTER-XLN POR, NS

LMY DOLO- LT TN, HRD DNS, VF-XLN, SUCRO MTRX THRU, OPQ CHRT IP, NO FLO, NO VIS POR

WT 9.0	
VIS 54	
LCM TR	CN
RPM 80	
WOB 30K	
SPM 60	
PP 800	
	CN
	CN
	CN
	CN
	CN
	CN
12:00 A.M. 10/28/17	
	CN
WT 9.1	
VIS 55	
LCM 2#	

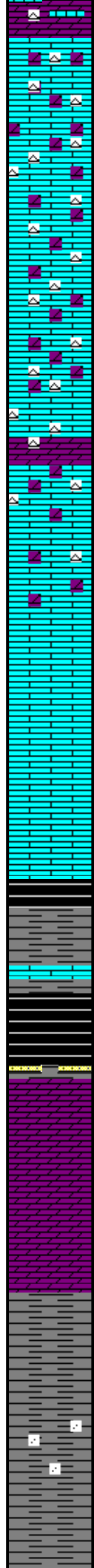


3650

3700

3750

3800



DOLOMIT LS- LT CRM BFF, HRD DNS, VF-XLN, RE-XLN MTRX IP TO SUB-SUCRO MTRX IP, OPQ CHRT IP, NO FLO, NO VIS POR

DOLOMIT LS- CRM TN, HRD DNS, VF-XLN, RE-XLN MTRX THRU TO TR SUB-SUCRO MTRX, OPQ CHRT IP, NO FLO, NO VIS POR

DOLOMIT LS- CRM TN, HRD DNS, VF-XLN, RE-XLN MTRX THRU TO TR SUB-SUCRO MTRX, OPQ WHT CHRT IP, NO FLO, NO VIS POR

LMY DOLO- TN, HRD DNS, VF-XLN, SUCRO MTRX THRU, OPQ GY CHRT IP, NO FLO, TR INTER-XLN POR TO NO VIS POR THRU, NS

LS- CRM TN, HRD DNS, VF-XLN, RE-XLN MTRX IP TO TR SUCRO MTRX, DOLO IP, OPQ CHRT IP, NO FLO, NO VIS POR

LS- CRM LT BRN, HRD DNS, VF/CRYPTO-XLN, RE-XLN MTRX THRU, TR IMBED GRN SH, TR CORSE CALC XLS, NO FLO, NO VIS POR

KINDERHOOK SH 3749' (-2339')

SH- LT GRN, FRM, FISS TO BLKY IP, PYR IP, TR BLK CARB SH

SH- BLK, FRM, BLKY TO TR FISS, CARB

HUNTON 3777' (-2367')

3376' SS- CLR FRSTY, TT TO FRI IP, MD/F-GRN, FR SRT, SILI CMNT, ABDT IMBED BLK SH, NO FLO, NO VIS CUT, FR/GD INTER-GRN POR, STRNG ODOR

3778' DOLO- WHT CRMT, HRD DNS, F/VF-XLN, SUCRO MTRX THRU, DLL YEL GLD FLO THRU, NO VIS CUT, TR INTER-XLN POR, TN STAIN IP, STRNG ODOR

3790' DOLO- CRM TN, HRD DNS, F-XLN, SUCRO MTRX THRU, NO FLO, NO VIS CUT, TR VUG POR TO PR INTER-XLN POR SCAT THRU, NS

SH- DK GRN GY, BRITT TO FRM IP, FISS TO TR BLKY, WXY TEXT

SH- GRN, GY, FRM, BLKY, SLTY, TR MD-GRN SS

RPM 80	
WOB 30K	
SPM 60	CN
PP 800	
	CN
WT 9.2	
VIS 50	
LCM 2#	CN
RPM 80	
WOB 30K	
SPM 60	
PP 800	
MUD CHECK @ 3705'	
WT 9.1	
VIS 49	
LCM 2#	CN
PV 20	
YP 10	
PH 10.0	
FIL 7.2	
CAL 20	
CHL 1,800	

CN

12:00 A.M. 10/29/17
CN

CN

VIOLA 3856' (-2446')

DOLO- LT BLK OFF WHT, BRITT TO HRD IP, MD/F-XLN, SUCRO MTRX THRU, NO FLO, NO VIS CUT, FR/GD INTER-XLN POR THRU, BLK STAIN SCAT THRU, MILD ODOR

DOLO- BLK TN, HRD, MD/F-XLN, SUCRO MTRX THRU, NO FLO, NO VIS CUT, BLK STAIN SCAT THRU, FR/GD INTER-XLN POR THRU, FAINT/MILD ODOR

DOLO- TN, BRITT, MD-XLN, SUCRO MTRX THRU, TR CORSE RHOMBS, BRIT YEL GLD FLO IN 30% WHEN CUT, GD FAST MLKY BLU STRM CUT, FR/GD INTER-XLN POR THRU, DK TN STAIN THRU, STRNG ODOR, NO F.O.

3885' SNDY DOLO- LT GY WHT, HRD TO BRITT IP, F-XLN, SUCRO MTRX, SNDY, DISS BLK SH SCAT THRU, NO FLO, FR SLO MLKY BLU STRM CUT, PR/FR INTER-XLN POR THRU, NO STAIN, STRNG ODOR

SS- WHT FRSTY, BRITT, MD/F-GRNS, FR SRT, RND TO WELL RND GRNS, SILI CMNT, TR UNCONSOL GRNS, NO FLO, NO VIS CUT, GD INTER-GRN POR THRU, NO STAIN, MILD ODOR

SS- FRSTY WHT, BRITT, CORSE-GRNS, GD SRT, WELL RND GRNS, TR IMBED GY SH, INTERBED DOLO STRINGERS, NO FLO, V/FAINT BLU STRM CUT, GD INTER-GRN POR THRU, TR STAIN TO TR TARRY FREE OIL, FAIR ODOR

SIMPSON 3918' (-2508')

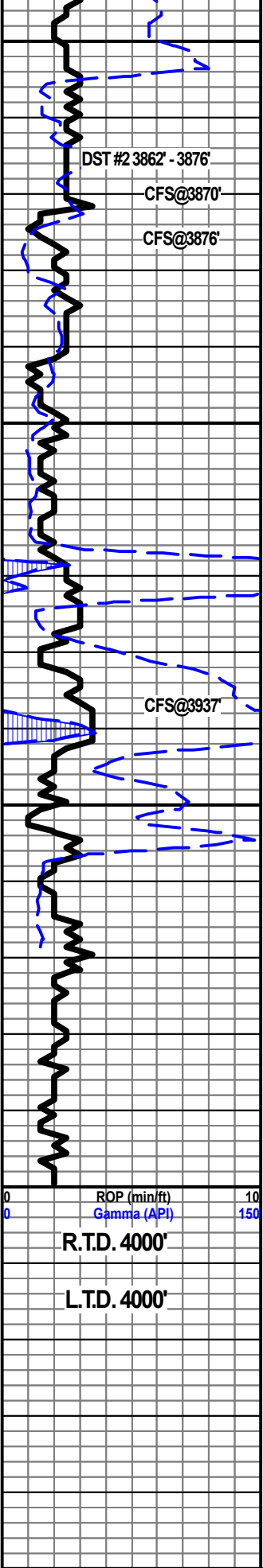
SS- WHT FRSTY V/LT GRN, TT TO FRI IP, F-GRNS, FR/GD SRT, RND TO SUB-RND GRNS, SILI CMNT, TR PYR, TR DISS BLK SH, NO FLO, NO VIS CUT, FR INTER-GRN POR THRU, FAINT TO MILD ODOR, TR LT TN STAIN

SS- WHT LT GRN, TT, MD/F-GRN, FR SRT, SUB-RND TO SUB-ANG GRNS, SILI CMNT, DISS BLK SH SCAT THRU, PYR IP, NO FLO, NO VIS CUT, PR/FR INTER-GRN POR THRU, NS

ARBUCKLE 3957' (-2547')

DOLO- TN, HRD DNS, CORSE/F-XLN, RE-XLN MTRX THRU, TR CORSE RHOMBS, WHT CHRT IP, NO FLO, NO VIS CUT, GD INTER-XLN POR, NS

DOLO- TN CRM, HRD DNS, MD/F-XLN, RE-XLN MTRX THRU, NO FLO, NO VIS POR, PR INTER-XLN POR THRU, NS



3850
3900
3950
4000
50

DST #2 3862' - 3876'

CFS@3870'

CFS@3876'

CFS@3937'

ROP (min/ft) 10
Gamma (API) 150

R.T.D. 4000'

L.T.D. 4000'

CN

12:00 A.M. 10/30/17

MUD CHECK @ 3870'

CN

WT 9.1
VIS 50
LCM 2#
PV 16
YP 14
PH 11.2
FIL 7.2
CAL 160
CHL 4,000

CN

CN

CN

6:30 A.M. 10/30/17