

# KIM B. SHOEMAKER

CONSULTING GEOLOGIST

316-884-9709 \* WICHITA, KS

## GEOLOGIST'S REPORT

WELL LOG TIME AND SAMPLE LOG

COMPANY L.D. DRILLING, INC.

LEASE # 1-36 BIGGS

FIELD WILDCAT

LOCATION 1220' FSL + 1590' FWL

SEC 36 TWP 6S RDP 36W

COUNTY THOMAS STATE KANSAS

CONTRACTOR L.D. DRILLING, INC.

SPUD 11-6-17 COMP 11-17-17

RTD 4900 LTD 4900

MUD UR. 3501 TYP. MUD CHEMICAL

ELEVATIONS

XD 3339

DF

GL 3334

Measurements are from 3339 KB

CASING  
SOURCE 8 5/8" @ 332'

PRODUCTION

ELECTRICAL SURVEYS  
DUAL IND, DENS-N. MICRO

SAMPLES SAVED FROM 3600 TO 4900

DRILLING TIME KEPT FROM 3500 TO 4900

SAMPLES EXAMINED FROM 3600 TO 4900

GEOLOGICAL SUPERVISION FROM 3800 TO 4900

GEOLOGIST ON WELL KIM B. SHOEMAKER

FORMATION TOPS	LOG	SAMPLES
ANHYDRITE	2932+ 407	2934+ 405
BY ANH.	2967+ 572	2969+ 370
STOTLER	3832- 493	3829- 490
HEEBNER	4140- 801	4140- 801
LANSING	4188- 849	4186- 847
B/KC	4444- 1105	4442- 1103
PAWNEE	4559- 1220	4555- 1216
FORT SCOTT	4622- 1283	4621- 1282
CHEROKEE	4652- 1313	4652- 1313
MISSISSIPPI	4802- 1463	4798- 1459



API: 15-193-21005

REMARKS

11-6-17 5900  
 11-7 @ 336'  
 11-8 @ 1000'  
 11-9 @ 2230'  
 11-10 @ 3054'  
 11-11 @ 3705'  
 11-12 @ 3878'  
 11-13 @ 4305'  
 11-14 @ 4425'  
 11-15 @ 4564'  
 11-16 @ 4677'  
 11-17 @ 4900'

### LEGEND

- Anhydrite
- Blk. shale
- Sandstone
- Shale
- Carb. sh.
- Limestone
- Alluvial
- Clay
- Dolomite

DRILLING TIME IN MINUTES  
PER FOOT  
Rate of Penetration necessary

DEPTH  
2900

REMARKS

SAMPLE DESCRIPTIONS

LITHOLOGY

ANHYDRITE 2934 + 405

BLANK 2969 + 370

3000

3000

3500

3600

3700

Samples are tagged

Sh. Rd silty

Sh. Rd silty

ls. wt. silty

ls. sh. silty

ls. sh. silty

Dk. sh. silty

Sh. Rd silty

sd. clay ls. v. fine sh. silty

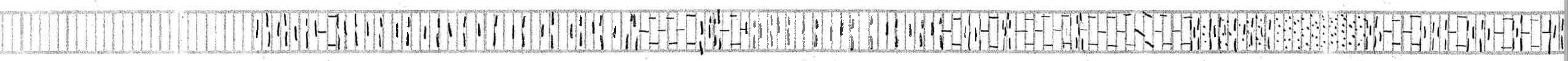
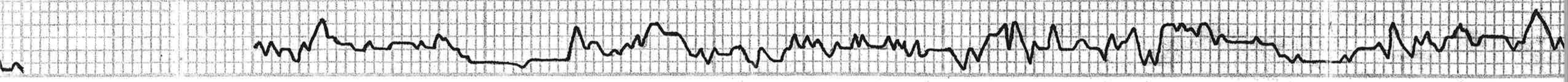
ls. sh. silty

Sh. Rd.

Sh. Rd-Lt. Col.

ls. sh. silty

Vis: 54  
WT: 8.8  
Vol: 7.2  
Dil: 2300









LS. To. Fossil. S. Si. Delemitic.

LS. To. Foss. Sh. A.

**HEBNER 4140-801**  
Sh. Dk. Blk.

LS. To. Aly. Si. Foss.

Sh. L.A. Silty. Sdy.

TORONTO

LS. wt. VSI. Foss. Sdy.

Sh. Bl.

**LANSING 4186-817**

LS. wt. Si. Foss. w/ Blk. Tarry. Sil. A.

LS. wt. Foss. Chly.

Sh. Dk. Silty. G.

Sh. Bl.

LS. wt. Si. Foss. w/ Blk. dd. Sil. Hoodar

Sh. Dk. Blk.

LS. wt. Foss. Sil. Sdy.

Sh. Bl. G.

LS. Bl. G. VSI. Foss.

Sh. Bl.

LS. wt. Si. Foss. w/ Chly.

LS. Silty. VSI. Foss.

LS. To. wt. Si. Foss. Sil. Calcitic

LS. Silty. VSI. Chly.

**MUNCIE CREEK 4306-967**

Sh. Blk. LS. Bl. VSI. Foss.

Sh. Silty. G.

LS. wt. Foss. Sil. A.

LS. G. VSI. Foss. Sil. A.

Sh. L. Blue.

LS. wt. Si. Foss. Sil. A. w/ Blk. dd. Sil. Hoodar

Sh. Bl.

LS. wt. Silty. Foss. w/ Blk. dd. Sil. Hoodar

LS. wt. Silty. Foss. w/ Blk. dd. Sil. Hoodar

Sh. Bl. G.

LS. wt. VSI. Foss. VSI. Chly.

LS. To. wt. Foss. VSI. Chly.

Sh. Dk. G.

Sh. Gw.

LS. wt. Silty. Si. Foss. Foss. Sil. Chly.

**B/KC 4492-1103**

Sh. Bl.

DST (2)

4300

DST (2) 4300-4385

1<sup>st</sup> DOWN: Blow built to 2"

2<sup>nd</sup> DOWN: 46 Blow

30. 45. 45. 60

Rec. 50 Mud (100% M)

FP: 1321 8-41 F

SIP: 1287-1263 \*

Tool Sample

100% Mud

Temp 121°F



**STARK 4393-1044**

VIS: 51

WT: 92

WV: 7.2

CXC: 6600

4400

DST (3)



MARMATON  
4450-4480

5 ft. S. of top of ...  
2' below: No Blow  
30-45-45-60

Rec. 5' S. of ... (90' - 011. 10' M.)  
25' 2000 (51' 011. 95' M.)  
TE 30'

FP: 10-18 21-27 \*  
Top Sample SIP: 1159-1093 \*  
90% Oil



LS. G. Silty  
Sh. Rd. G. Pink.  
LS. G. V. Silty  
Sh. L. Blue G.  
LS. To 4 ft. Silty ...  
Sh. Rd.

LS. To 4 ft. Silty ...  
Dk. Bl. Silty ...

LS. G. Silty  
Sh. Dk. G.  
Sh. Blk.

PAWNEE 4555-4216  
LS. Dk. Bl. ...  
LS. To 4 ft. ...  
Dk. Silty ...

LS. Dk. Bl. ...  
Sh. Blk. Carb.

LS. To 4 ft. ...  
Sh. L. Carb.

LS. To 4 ft. ...  
Sh. Blk. Carb.

FORT SCOT 4621-4282  
LS. L. G. ...

LS. To 4 ft. ...  
Sh. Blk. Carb.

CHARDKEE 4652-4313  
Sh. Blk. Carb.  
LS. L. G. ...

Sh. Blk. Carb.  
LS. G. ...

Sh. Blk. Carb.  
LS. To 4 ft. ...

Sh. Blk. Carb.  
Sh. Blk. Carb.

Sh. Blk. Carb.  
Sh. Blk. Carb.

Sh. Blk. Carb.  
Sh. Blk. Carb.

Sh. Blk. Carb.  
Sh. Blk. Carb.

Sh. Blk. Carb.  
Sh. Blk. Carb.

Sh. Blk. Carb.  
Sh. Blk. Carb.

Sh. Blk. Carb.  
Sh. Blk. Carb.

4500

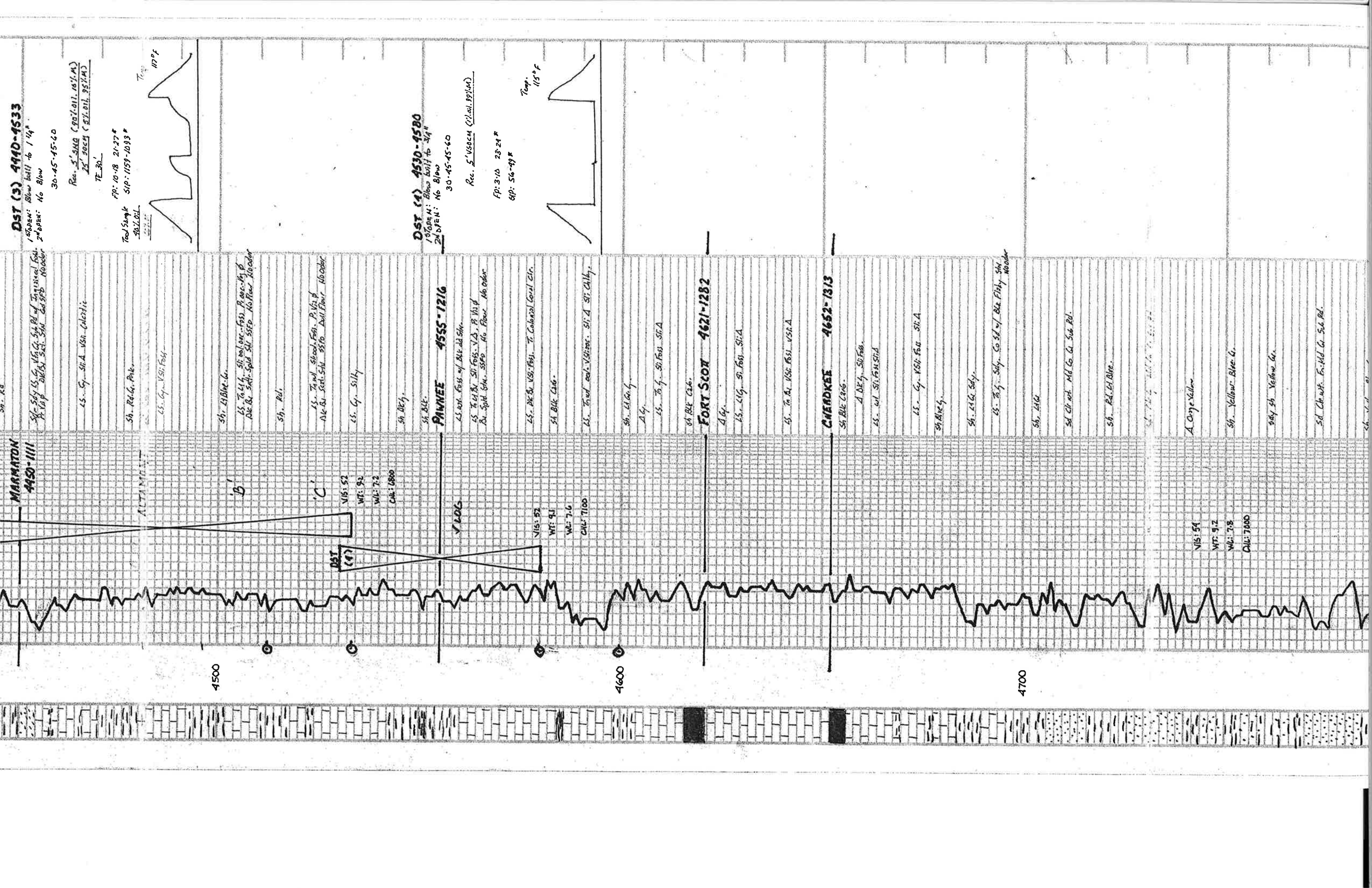
4600

4700

DST (4)  
Vis: 52  
WT: 92  
WL: 7.2  
CIL: 0800

Vis: 53  
WT: 91  
WL: 7.6  
CIL: 7100

Vis: 54  
WT: 92  
WL: 7.8  
CIL: 7000



Sh. Yellow. Blue. G.  
sd. Cl. w/ F. G. S. R.  
54 Yellow A Orange

MISSISSIPPI 4798-1459

Dol. G. V. Fresh Suc.

Dol. G. Fresh Suc.

Dol. G. Fresh Silty.

Dol. G. DK G. V. Fresh Suc. Sil. Fresh.

66. Yellow. G.

ss. G. w/ Foss. Co. In.

Dol. w/ silty. Fresh Suc.

A. w/ G. Spectral w/ 84.

A. w/ G. Speckled

Dol. G. Fresh Suc.

Dol. G. Fresh Suc. Sil. Silty.

4800

4900

RTD 4900-1561

